

PLOT DATE = 7/12/2007  
 FILE NAME = s:\cadd\0805\road\sheds\p01.dwg  
 PLOT SCALE = 1/4" = 1'-0"  
 USER NAME = b.johnson

PLAN  
 CHECKED BY: [ ]  
 DATE: [ ]  
 DRAWN BY: [ ]  
 DATE: [ ]

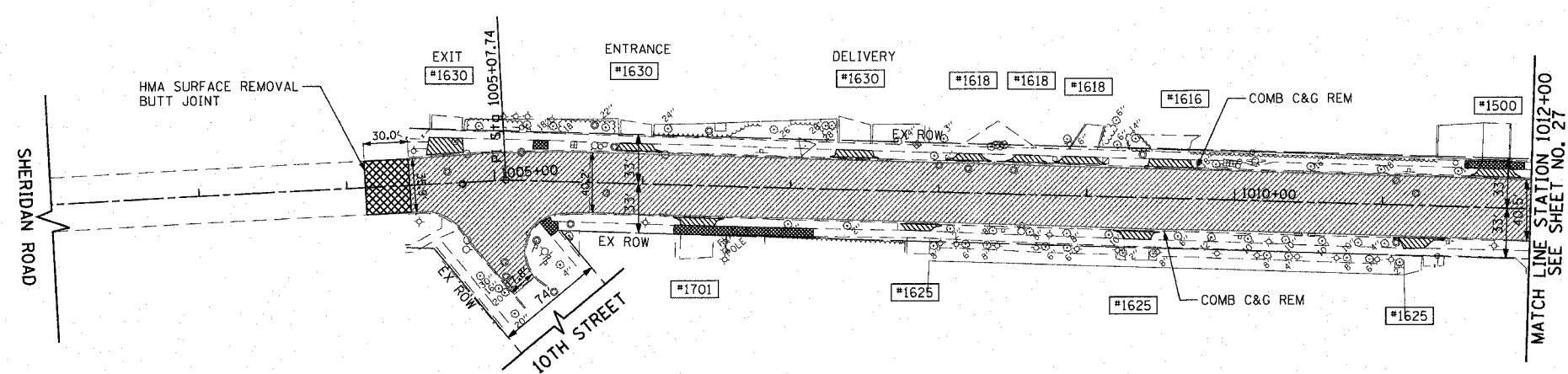
PROFILE  
 CHECKED BY: [ ]  
 DATE: [ ]  
 DRAWN BY: [ ]  
 DATE: [ ]

1051 PERIMETER DRIVE, SUITE 1025  
 SCHAUMBURG, ILLINOIS 60173  
 (815) 605-8800

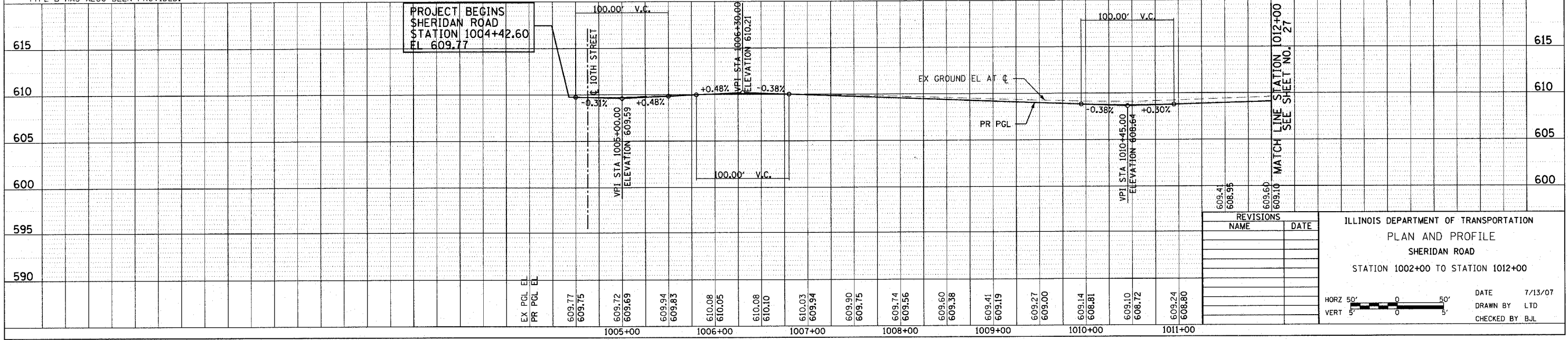
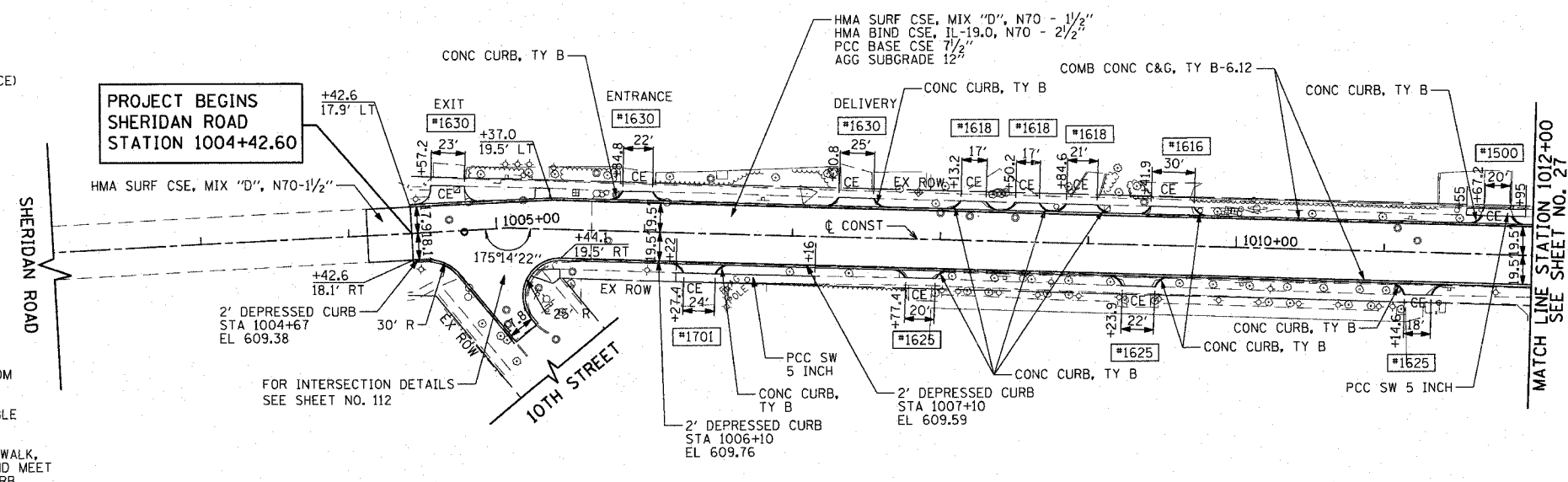


CONTRACT NO. 83964				
F.A.U. RTE.	SECTION	COUNTY	TOTAL SHEETS	SHEET NO.
3509	00-00173-00-FP	COOK	246	26
STA. 1002+00		TO STA. 1012+00		
FED. ROAD DIST. NO. 7 ILLINOIS FED. AID PROJECT				

- LEGEND**
- PAVEMENT REMOVAL
  - DRIVEWAY PAVEMENT REMOVAL
  - SIDEWALK REMOVAL
  - HOT-MIX ASPHALT (HMA) SURFACE REMOVAL, 1 1/2"



- NOTES:**
- ALL MAINLINE PAVEMENT SURFACES ARE HMA UNLESS OTHERWISE NOTED.
  - ALL DRIVE RADII ARE 10' UNLESS OTHERWISE NOTED.
  - FOR DRIVE AND ACCESS WALK MATERIALS & TYPE SCHEDULE, SEE SHEET NO. 12 TO 13.
  - DRIVEWAYS SHALL BE REPLACED WITH SAME MATERIAL AS EXISTING DRIVEWAY. ALL DRIVEWAYS SHALL FOLLOW BD-01 AND BD-02 FOR PROPOSED DRIVEWAY PAVEMENT COMPOSITION. (CE-COMMERCIAL ENTRANCE, PE- PRIVATE ENTRANCE)
  - FOR SUPERELEVATION DETAILS, SEE SHEET NO. 38 TO 41.
  - TEN FOOT TRANSITIONS SHALL BE USED TO MATCH PROPOSED ITEMS OF WORK TO THE EXISTING ITEMS IN THE FIELD UNLESS OTHERWISE SHOWN. THE TRANSITIONS SHALL BE PAID FOR AT THE CONTRACT UNIT PRICE FOR THE PROPOSED ITEM OF WORK SPECIFIED.
  - FOR RIGHT-OF-WAY AND EASEMENT INFORMATION, SEE PLAT OF HIGHWAYS SHEETS NO. 108 TO 111.
  - FOR CRITICAL TREE LOCATIONS, SEE SHEET NO. 22 FOR CURB TRANSITION DETAILS AND FOR SCHEDULE OF CRITICAL TREES.
  - ALL DEPRESSED CURB SHALL FOLLOW BD-02 FOR PROPOSED DEPRESSED CURB TRANSITION. STATIONS ARE GIVEN TO THE CENTER OF THE DEPRESSED CURB. ELEVATIONS ARE GIVEN AT THE BACK OF CURB.
  - DETECTABLE WARNINGS SHALL BE INSTALLED WHERE SIDEWALKS MEET DEPRESSED CURB AND SHALL EXTEND TWO FEET AWAY FROM THE DEPRESSED CURB.
  - CURB RAMPS SHALL BE PAID FOR AS PCC SW 5 INCH. DETECTABLE WARNINGS SHALL BE INSTALLED ALONG LENGTH OF RAMP.
  - AN ADDITIONAL QUANTITY OF SIDEWALK REMOVAL AND PCC SIDEWALK, 5 INCH HAS BEEN PROVIDED TO REPLACE DAMAGED SIDEWALK AND MEET ADA REQUIREMENTS. AN ADDITIONAL QUANTITY OF CONCRETE CURB TYPE B HAS ALSO BEEN PROVIDED.



REVISIONS	
NAME	DATE

ILLINOIS DEPARTMENT OF TRANSPORTATION

PLAN AND PROFILE

SHERIDAN ROAD

STATION 1002+00 TO STATION 1012+00

DATE 7/13/07

DRAWN BY LTD

CHECKED BY BJL

