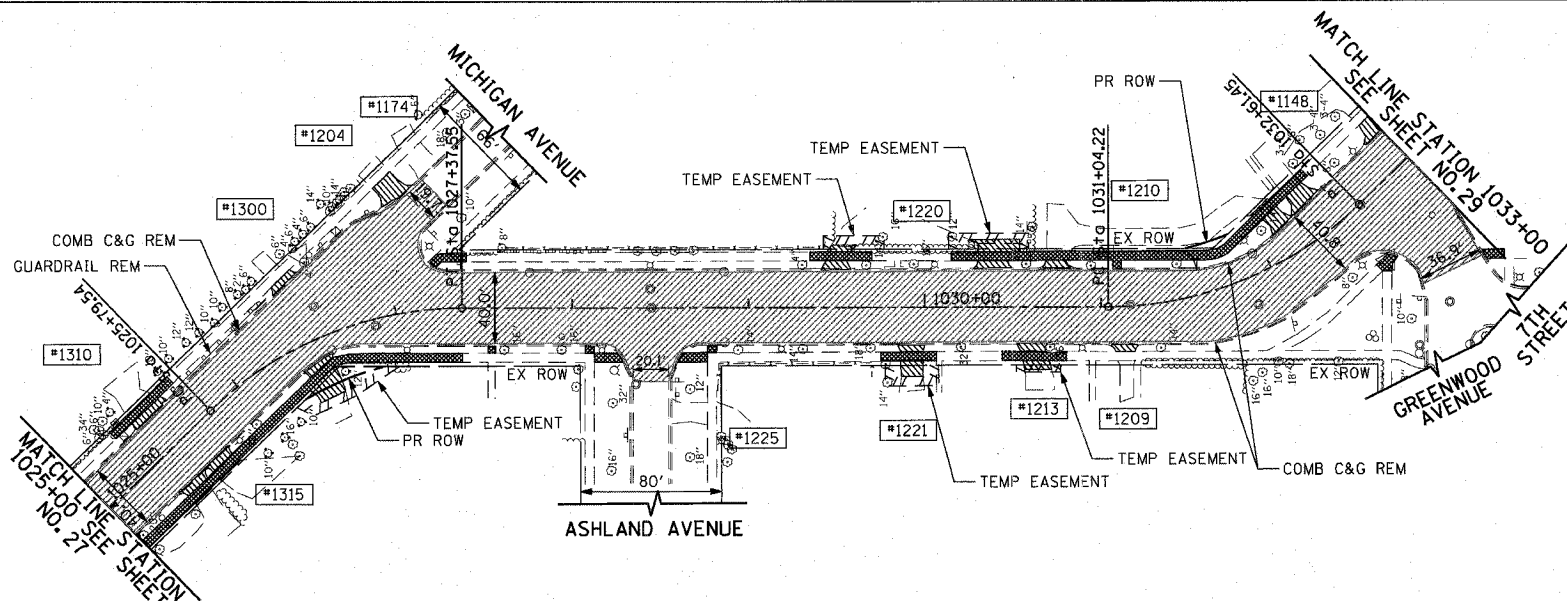
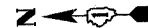
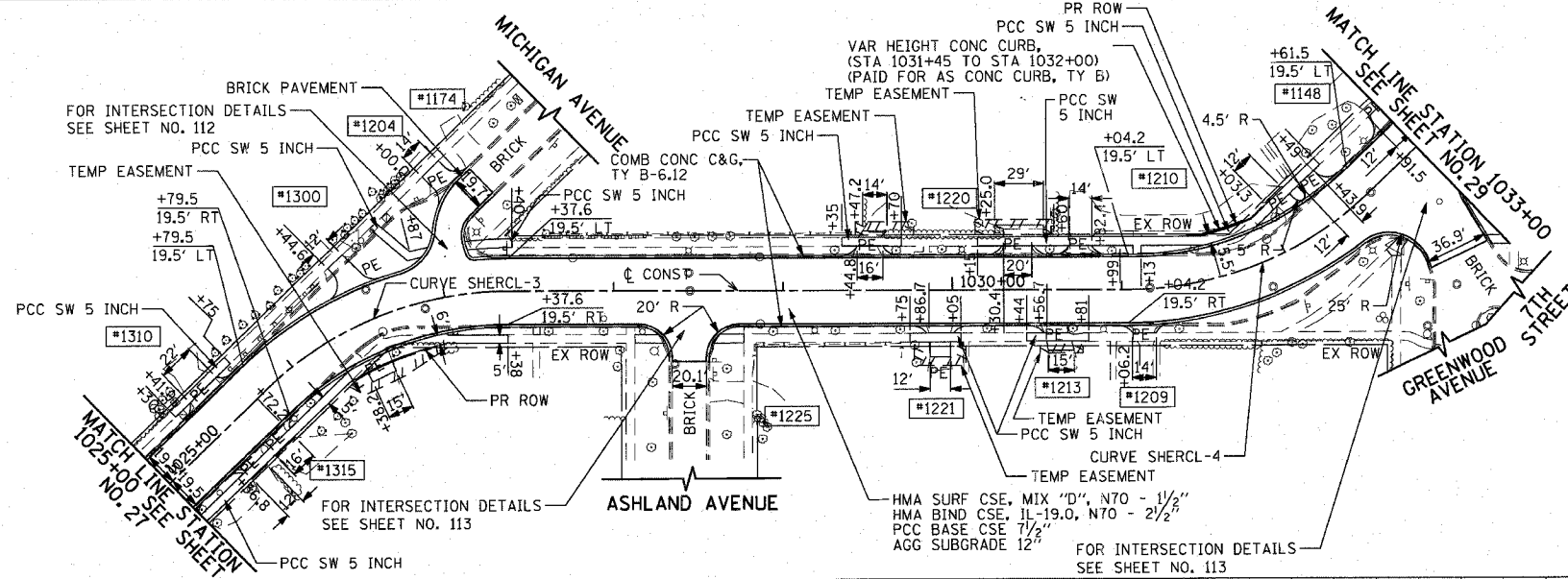


F.A.U. RTE.	SECTION	COUNTY	TOTAL SHEETS	SHEET NO.
3509	00-00173-00-FP	COOK	246	28
STA. 1025+00		TO STA. 1033+00		
FED. ROAD DIST. NO. 7 ILLINOIS FED. AID PROJECT				



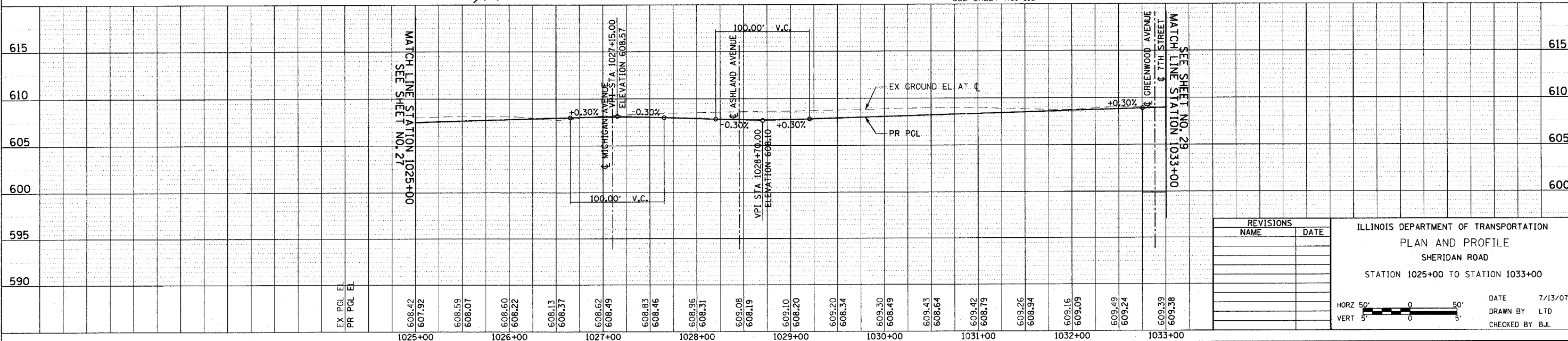
EXISTING



PROPOSED

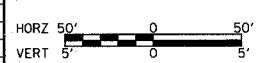
CURVE SHERCL-3	CURVE SHERCL-4
PI STA = 1026+62.70	PI STA = 1031+86.93
Δ = 44° 09' 50" (RT)	Δ = 43° 56' 44" (LT)
R = 205.00'	R = 205.00'
T = 83.17'	T = 82.71'
L = 158.02'	L = 157.23'
e = 16.23'	e = 16.06'
f = 2.00%	f = 2.00%
S.E. RUN = 34'	S.E. RUN = 34'
PC STA = 1025+79.54	PC STA = 1031+04.22
PT STA = 1027+27.55	PT STA = 1032+61.45

FOR LEGEND AND NOTES SEE SHEET NO. 26



REVISIONS	
NAME	DATE

ILLINOIS DEPARTMENT OF TRANSPORTATION
 PLAN AND PROFILE
 SHERIDAN ROAD
 STATION 1025+00 TO STATION 1033+00



DATE 7/13/07
 DRAWN BY LTD
 CHECKED BY BJL

DATE: 7/12/2007
 FILE NAME: g:\cadd\83964\plan\sheet28.dwg
 PLOT SCALE: 48,99999 / IN
 USER NAME: b.johnson

DATE	BY	NO.

DATE	BY	NO.

1051 PERIMETER DRIVE, SUITE 1025
 SCHAMBERG, ILLINOIS 60173
 (630) 655-9600

