

PLOT DATE = 7/12/2007
 FILE NAME = g:\cadd\888\888\road\sheet\pp08.sht
 PLOT SCALE = 4"x11" = 1" = 40'
 USER NAME = bjoelmer

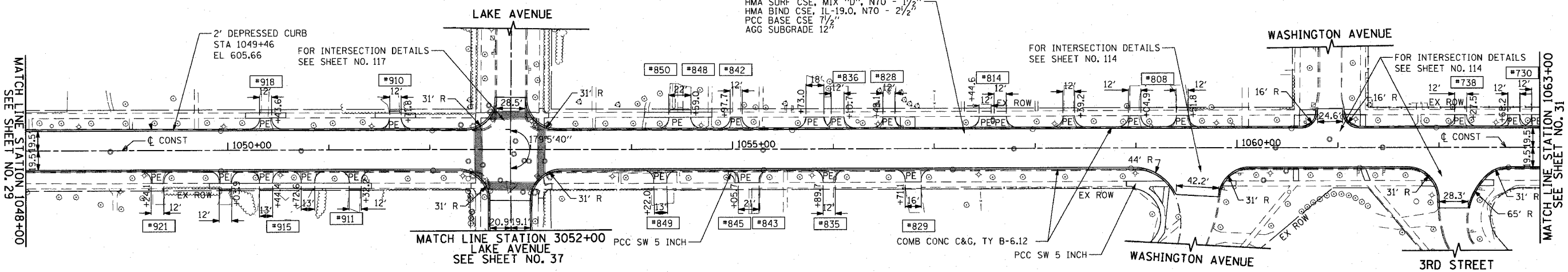
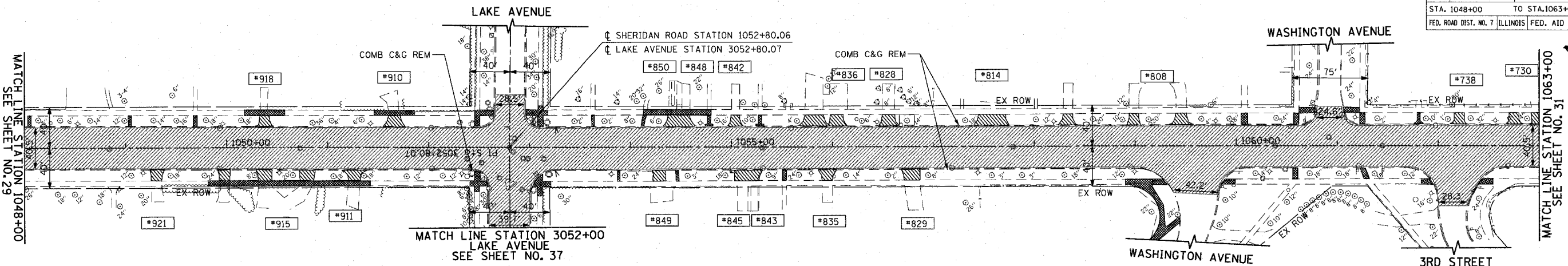
DATE	BY	REVISION
		1. SURVEYED
		2. PLAN
		3. CHECKED
		4. APPROVED

DATE	BY	REVISION
		1. SURVEYED
		2. PROFILE
		3. CHECKED
		4. APPROVED

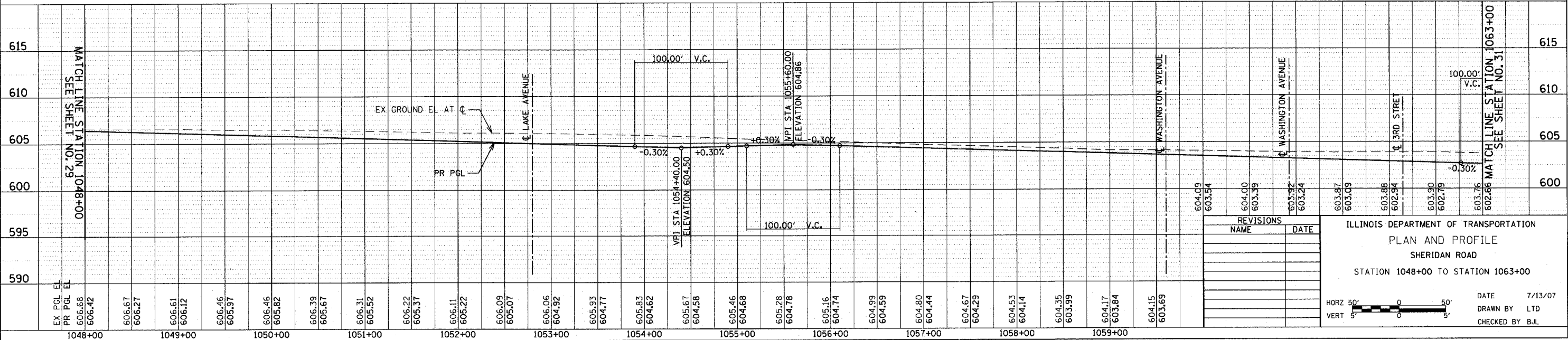
1051 PERMETER DRIVE, SUITE 1025
 SCHAMBERG, ILLINOIS 60173
 (847) 866-9800



CONTRACT NO. 83964	
F.A.U. RTE.	SECTION
3509	00-00173-00-FP
COUNTY	TOTAL SHEETS
COOK	246
STA. 1048+00	TO STA. 1063+00
FED. ROAD DIST. NO. 7 ILLINOIS FED. AID PROJECT	



FOR LEGEND AND NOTES SEE SHEET NO. 26



REVISIONS	
NAME	DATE

ILLINOIS DEPARTMENT OF TRANSPORTATION
 PLAN AND PROFILE
 SHERIDAN ROAD
 STATION 1048+00 TO STATION 1063+00

DATE 7/13/07
 DRAWN BY LTD
 CHECKED BY BJL

