

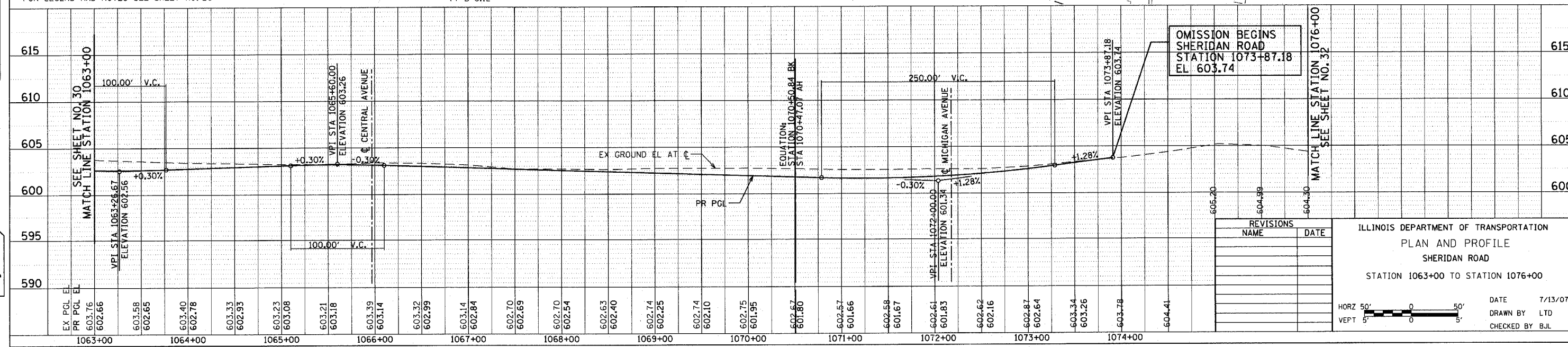
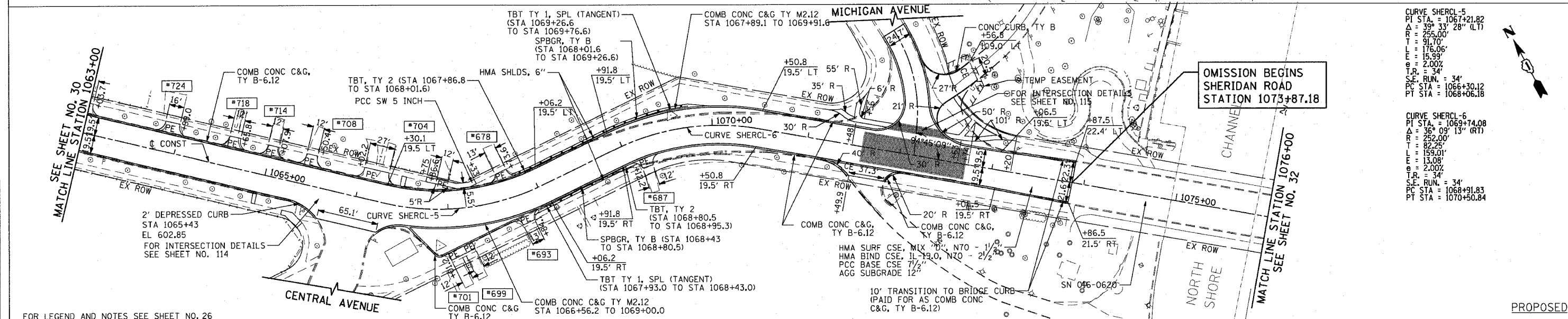
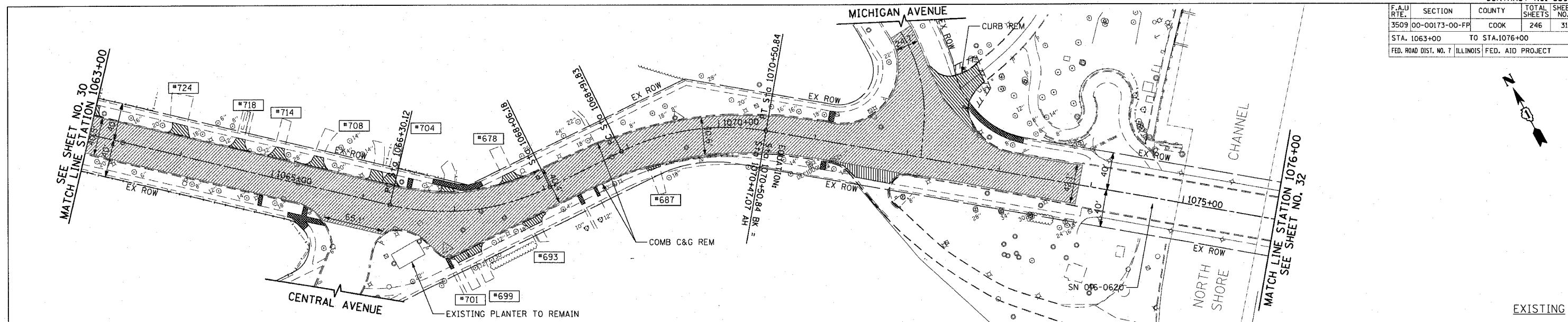
F.A.U. RTE.	SECTION	COUNTY	TOTAL SHEET NO.	SHEET NO.
3509	00-00173-00-FP	COOK	246	31
STA. 1063+00		TO STA. 1076+00		
FED. ROAD DIST. NO. 7 ILLINOIS FED. AID PROJECT				

PLOT DATE = 7/12/2007  
 FILE NAME = g:\a0865\8802\1\each\sheet\p0864ht  
 PLOT SCALE = 48.9999 / IN.  
 USER NAME = b.julien

DATE	BY	REVISION

DATE	BY	REVISION

1051 PERIMETER DRIVE, SUITE 1026  
 SCHAMBERG, ILLINOIS 60173  
 (617) 685-9600



REVISIONS	NAME	DATE

ILLINOIS DEPARTMENT OF TRANSPORTATION  
 PLAN AND PROFILE  
 SHERIDAN ROAD  
 STATION 1063+00 TO STATION 1076+00

DATE 7/13/07  
 DRAWN BY LTD  
 CHECKED BY BJL

