

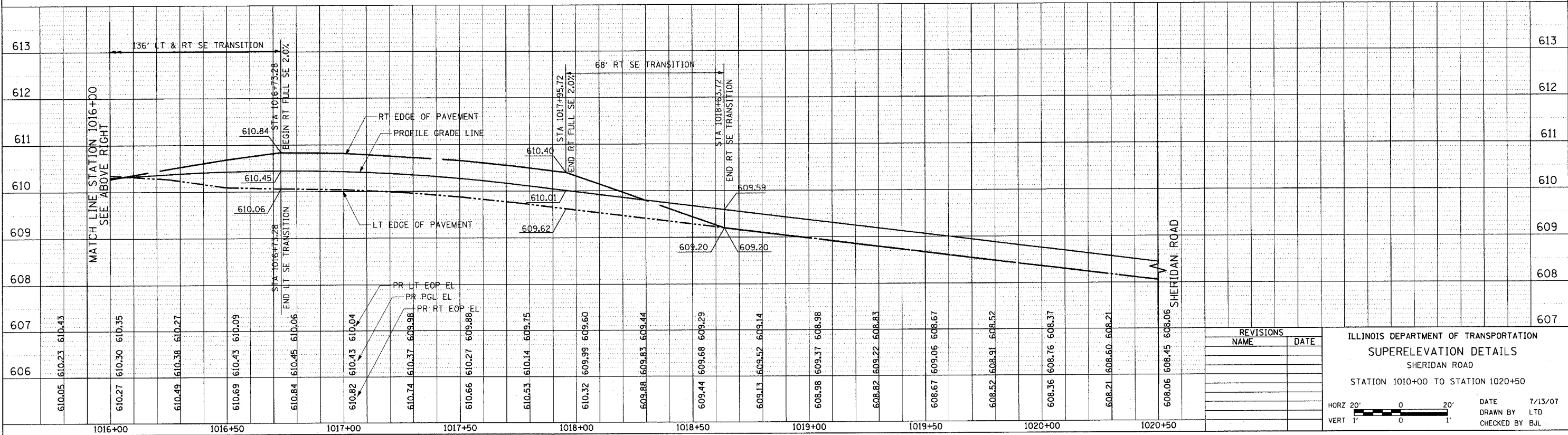
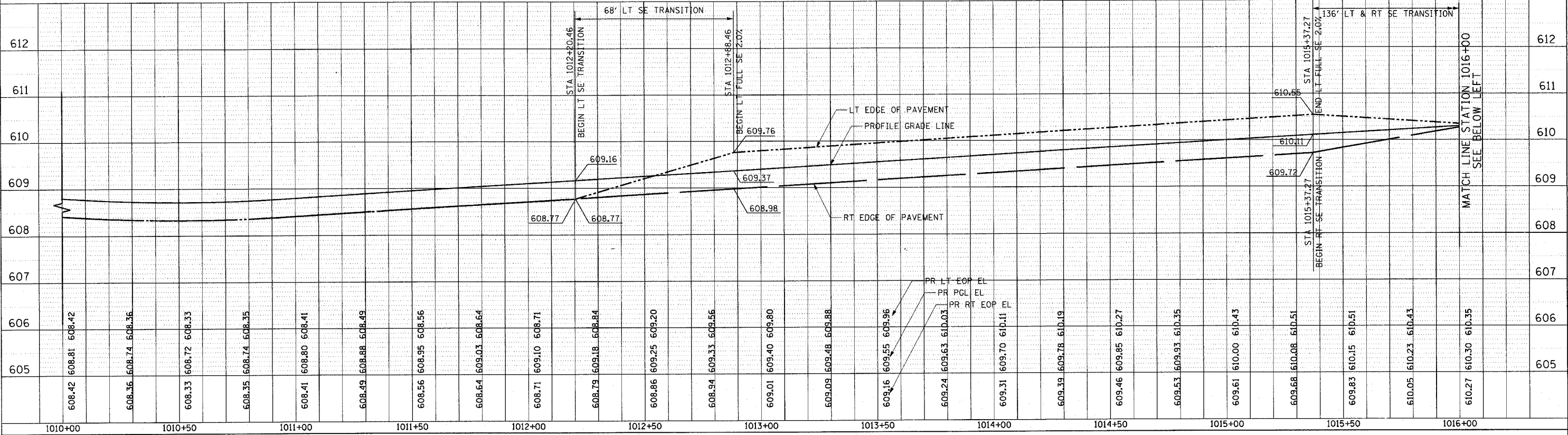
| F.A.U. RTE.         | SECTION        | COUNTY   | TOTAL SHEETS | SHEET NO.        |
|---------------------|----------------|----------|--------------|------------------|
| 3509                | 00-00173-00-FP | COOK     | 246          | 38               |
| STA.                |                | TO STA.  |              |                  |
| FED. ROAD DIST. NO. |                | ILLINOIS |              | FED. AID PROJECT |

PLOT DATE = 7/12/2007  
 FILE NAME = g:\c088\0885\road\shades\sheet1.dwg  
 USER NAME = b.johnson / IN

| PLAN   | DATE                     |
|--|--------------------------|
| SURVEYED<br>ALIGNED<br>CHECKED<br>BY: _____<br>NO. _____ | BY: _____<br>DATE: _____ |

| PROFILE  | DATE                     |
|--|--------------------------|
| SURVEYED<br>GRADES CHECKED<br>BY: _____<br>NO. _____ | BY: _____<br>DATE: _____ |

1051 PERIMETER DRIVE SUITE 1025  
 SCHAMBURG, ILLINOIS 60173  
 (847) 805-9800



| REVISIONS |      |
|-----------|------|
| NAME      | DATE |
|           |      |
|           |      |
|           |      |
|           |      |
|           |      |

ILLINOIS DEPARTMENT OF TRANSPORTATION  
**SUPERELEVATION DETAILS**  
 SHERIDAN ROAD  
 STATION 1010+00 TO STATION 1020+50

HORZ 20' 0 20'  
 VERT 1' 0 1'

DATE 7/13/07  
 DRAWN BY LTD  
 CHECKED BY BJL