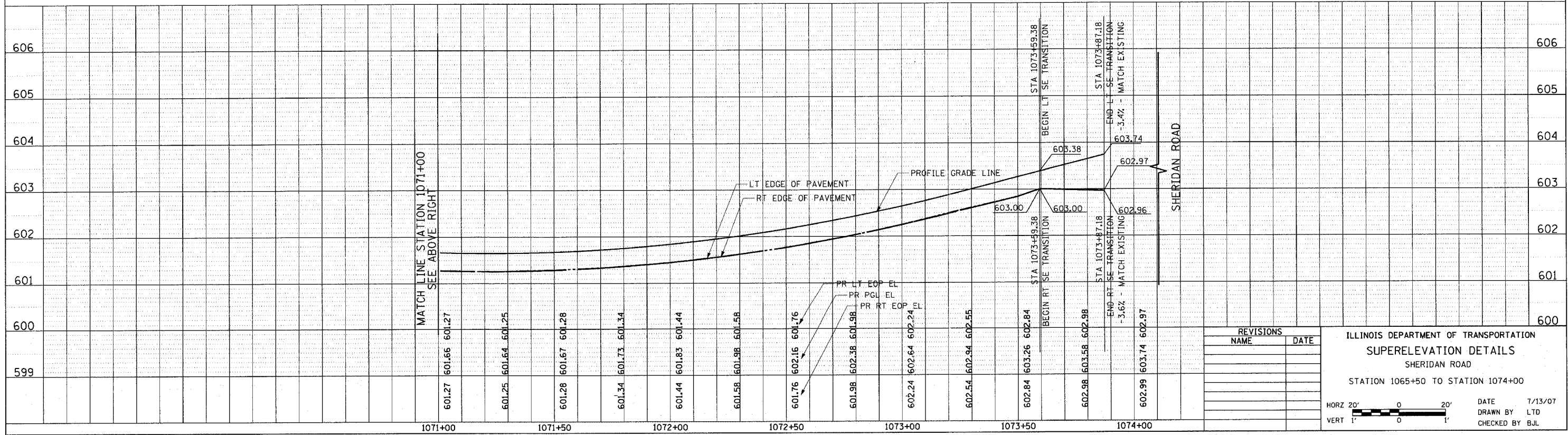
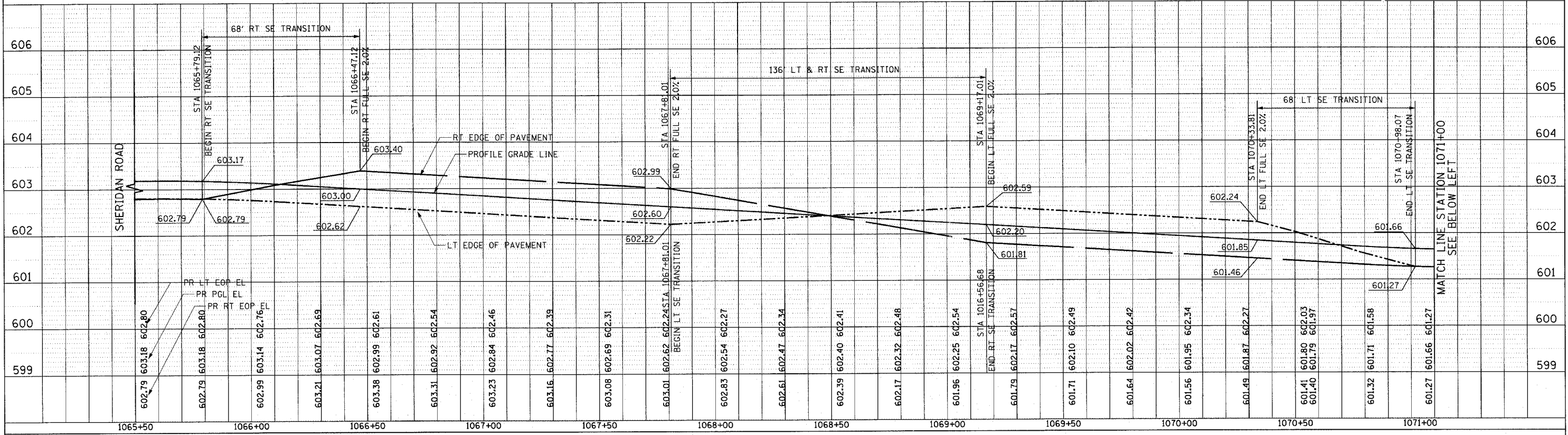


F.A.U. RTE.	SECTION	COUNTY	TOTAL SHEETS	SHEET NO.
3509	00-00173-00-FP	COOK	246	40
STA.		TO STA.		
FED. ROAD DIST. NO.		ILLINOIS FED. AID PROJECT		

PLAN
 SURVEYED
 PLOTTED
 CHECKED
 NOTE BOOK
 NO. _____
 DATE _____
 BY _____

PROFILE
 SURVEYED
 PLOTTED
 CHECKED
 NOTE BOOK
 NO. _____
 DATE _____
 BY _____

1051 PERIMETER DRIVE, SUITE 1025
 SCHAMBURG, ILLINOIS 60173
 (847) 605-9600



REVISIONS	
NAME	DATE

ILLINOIS DEPARTMENT OF TRANSPORTATION
SUPERELEVATION DETAILS
 SHERIDAN ROAD
 STATION 1065+50 TO STATION 1074+00

HORIZ 20' 0 20'
 VERT 1' 0 1'

DATE 7/13/07
 DRAWN BY LTD
 CHECKED BY BJL