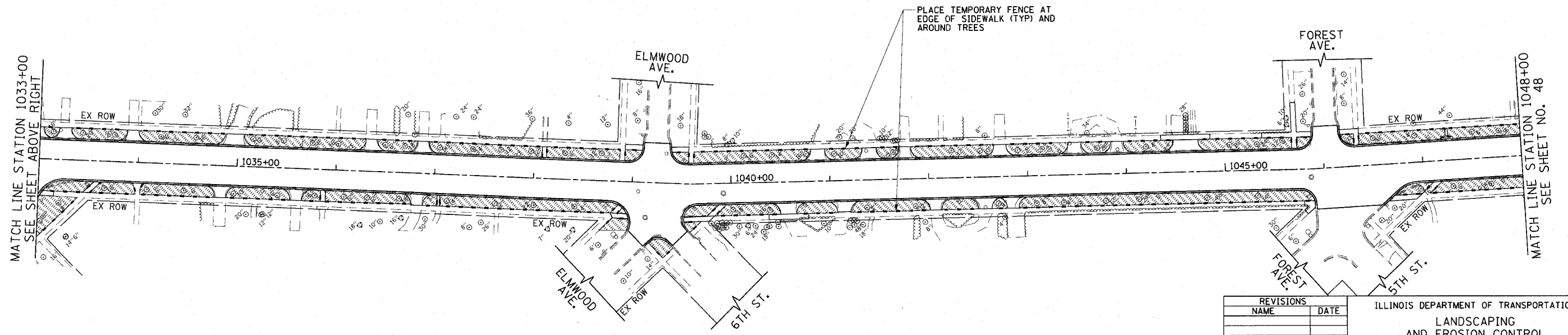
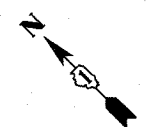
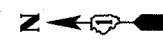
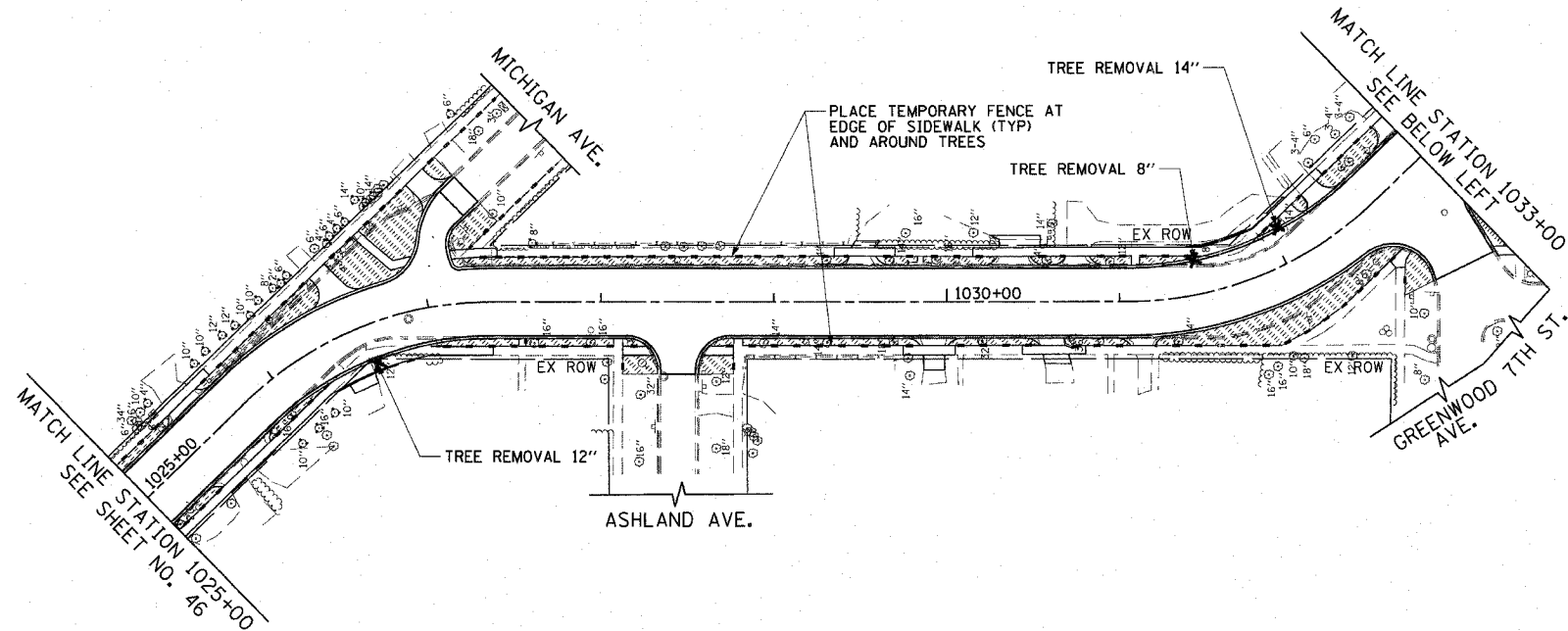


F.A.U. RTE.	SECTION	COUNTY	TOTAL SHEETS	SHEET NO.
3509	00-00173-00-FP	COOK	246	47
STA. 1025+00		TO STA. 1048+00		
FED. ROAD DIST. NO. 7		ILLINOIS FED. AID PROJECT		

PLOT DATE = 7/12/2007
 FILE NAME = c:\p666\83964\road\shasta\landscap\82.dwg
 PLOT SCALE = 50.0000 / IN.
 USER NAME = bjhobman



1051 PERIMETER DRIVE, SUITE 1025
 SCHALMBURG, ILLINOIS 60173
 (847) 605-9600



REVISIONS	
NAME	DATE

ILLINOIS DEPARTMENT OF TRANSPORTATION
 LANDSCAPING
 AND EROSION CONTROL
 SHERIDAN ROAD
 STATION 1025+00 TO STATION 1048+00

DATE 7/13/07
 DRAWN BY LTD
 CHECKED BY BJL

50' 0 50'
 HORIZ. 1"=50'