

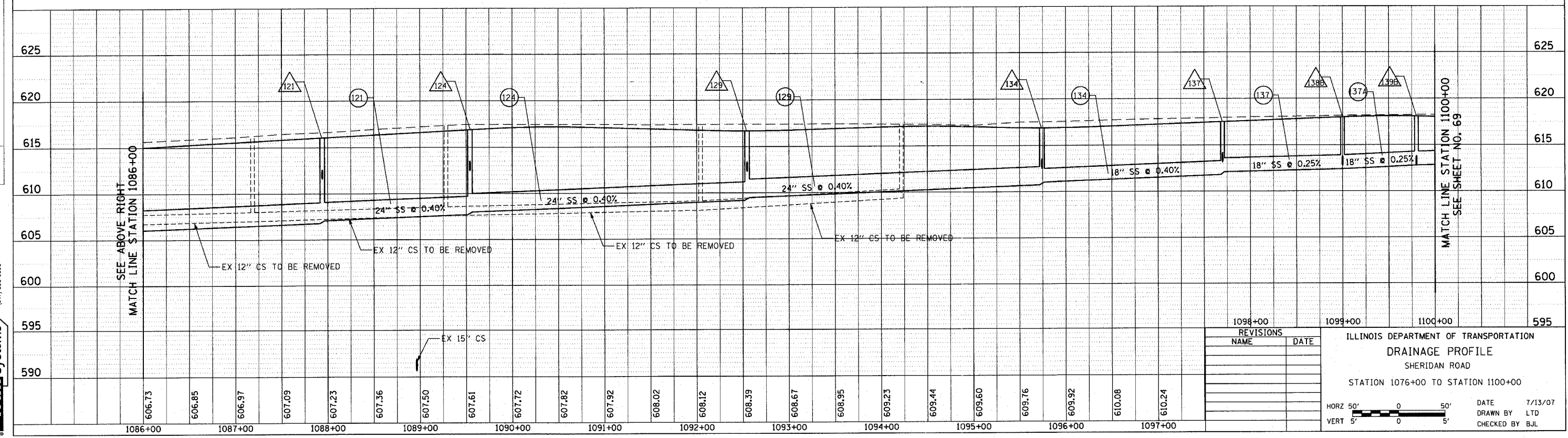
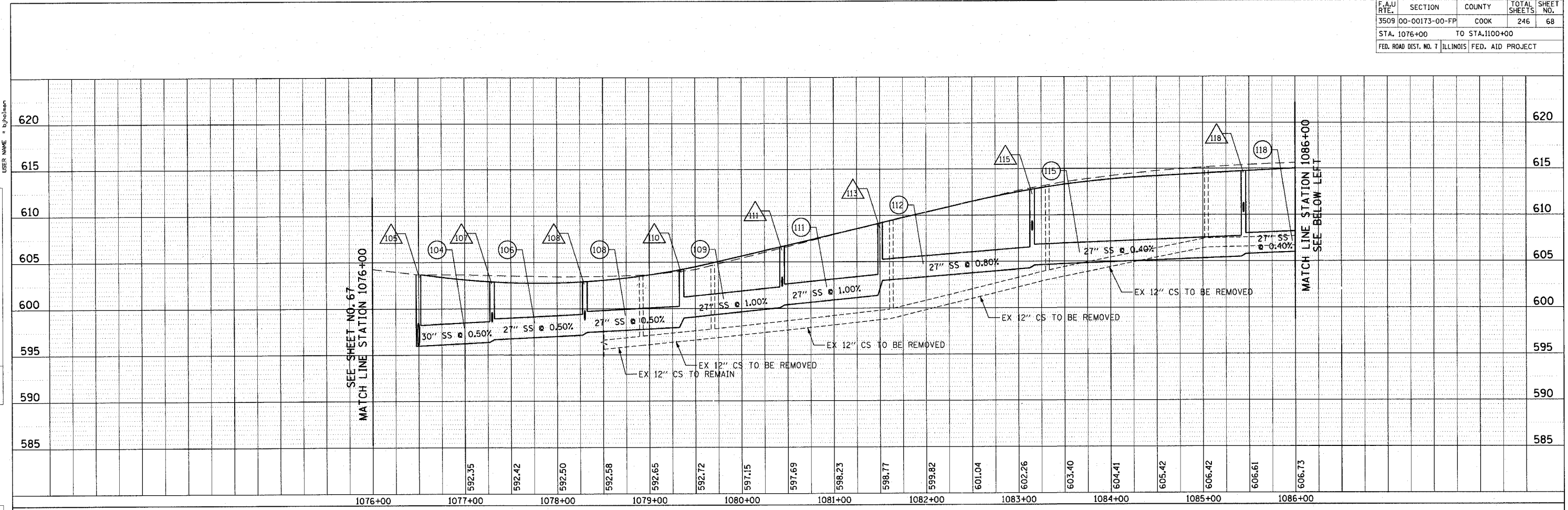
CONTRACT NO. 83964				
F.A.U. RTE.	SECTION	COUNTY	TOTAL SHEETS	SHEET NO.
3509	00-00173-00-FP	COOK	246	68
STA. 1076+00		TO STA. 1100+00		
FED. ROAD DIST. NO. 7 ILLINOIS FED. AID PROJECT				

PLOT DATE = 7/12/2007  
 FILE NAME = g:\a\86\8005\1-eod\sheet\dr-pr-64.dwg  
 PLOT SCALE = 45,000 : 1  
 USER NAME = bjoelma

PLAN SURVEYED BY: \_\_\_\_\_ DATE: \_\_\_\_\_  
 PLOTTED BY: \_\_\_\_\_  
 CHECKED BY: \_\_\_\_\_  
 NOTE BOOK NO.: \_\_\_\_\_  
 STRUCTURE NOTATIONS CPWD

PROFILE SURVEYED BY: \_\_\_\_\_ DATE: \_\_\_\_\_  
 PLOTTED BY: \_\_\_\_\_  
 CHECKED BY: \_\_\_\_\_  
 NOTE BOOK NO.: \_\_\_\_\_  
 STRUCTURE NOTATIONS CPWD

1051 PERIMETER DRIVE, SUITE 1025  
 SCHAUMBURG, ILLINOIS 60173  
 (847) 895-9800



REVISIONS	DATE

ILLINOIS DEPARTMENT OF TRANSPORTATION  
**DRAINAGE PROFILE**  
 SHERIDAN ROAD  
 STATION 1076+00 TO STATION 1100+00

DATE 7/13/07  
 DRAWN BY LTD  
 CHECKED BY BJL

