

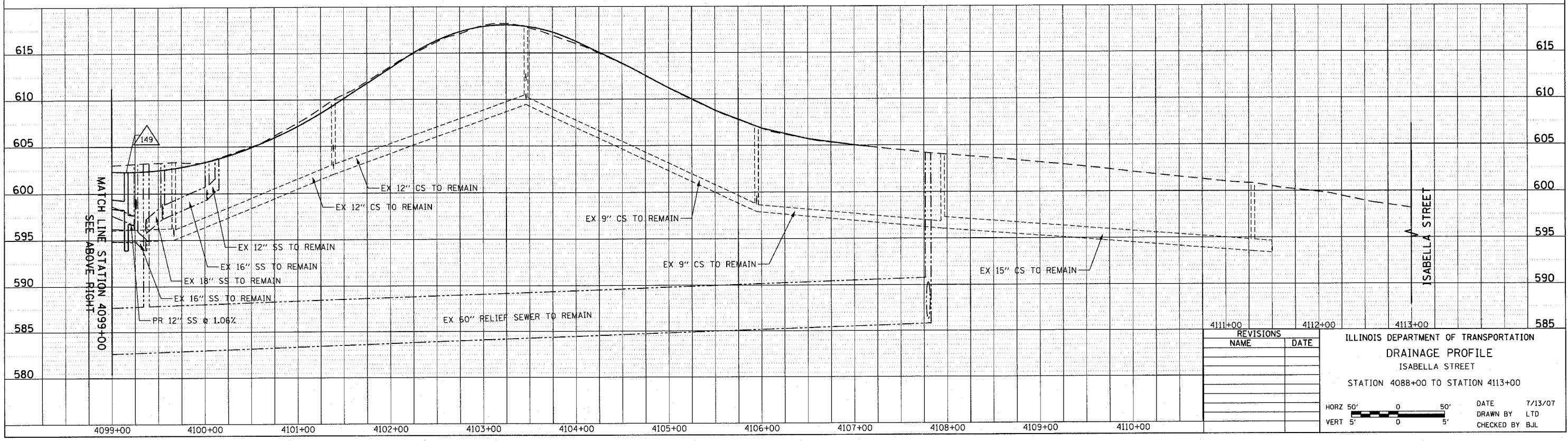
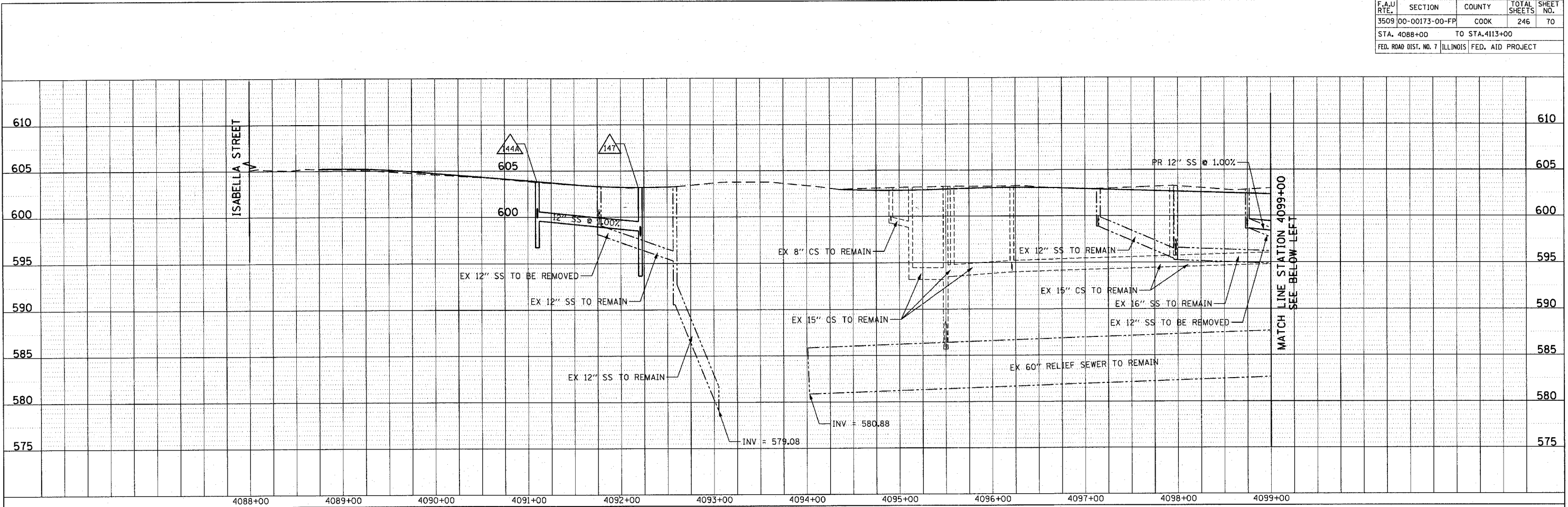
CONTRACT NO. 83964				
F.A.U. RTE.	SECTION	COUNTY	TOTAL SHEETS	SHEET NO.
3509	00-00173-00-FP	COOK	246	70
STA. 4088+00		TO STA. 4113+00		
FED. ROAD DIST. NO. 7 ILLINOIS FED. AID PROJECT				

PLOT DATE = 7/12/2007
 FILE NAME = g:\c006\0889\road\sheet\dr-pr-06.dwg
 PLOT SCALE = 48.9999 / 1 IN.
 USER NAME = bjolesman

PLAN SURVEYED
 PLOTTED
 CHECKED
 DATE
 BY
 NO. OF WAY CHECKED
 CAD FILE NAME
 NO.

PROFILE SURVEYED
 PLOTTED
 CHECKED
 DATE
 BY
 NO. OF WAY CHECKED
 STRUCTURE NOTATIONS CHNG
 NO.

1091 PERIMETER DRIVE, SUITE 1025
 SCHAMLUNBURG, ILLINOIS 60173
 (847) 606-9600



REVISIONS	DATE

ILLINOIS DEPARTMENT OF TRANSPORTATION
 DRAINAGE PROFILE
 ISABELLA STREET
 STATION 4088+00 TO STATION 4113+00

DATE 7/13/07
 DRAWN BY LTD
 CHECKED BY BJL

