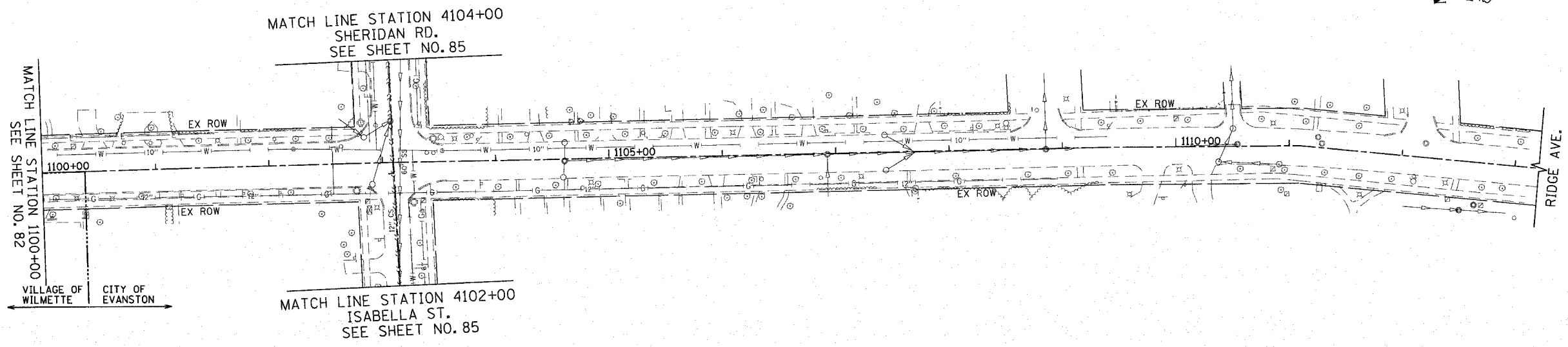


| F.A.U. RTE. | SECTION | COUNTY | TOTAL SHEETS | SHEET NO. |
|-----------------------|----------------|---------------------------|--------------|-----------|
| 3509 | 00-00173-00-FP | COOK | 246 | 83 |
| STA. 1100+00 | | TO STA. 1113+20.81 | | |
| FED. ROAD DIST. NO. 7 | | ILLINOIS FED. AID PROJECT | | |

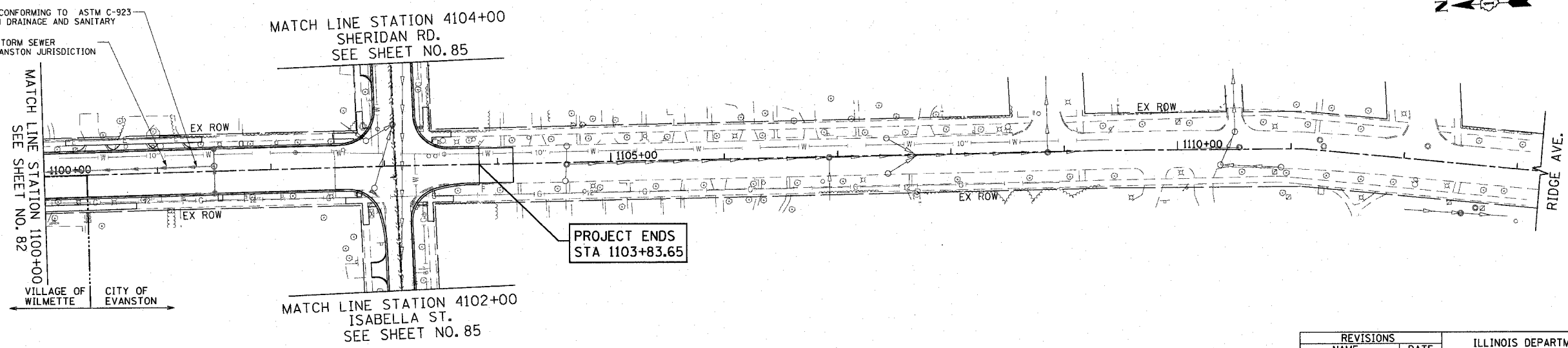
PLOT DATE = 7/12/2007
 FILE NAME = g:\c086\086\road\shasta\sewage\shant
 PLOT SCALE = 80.0000 / IN.
 USER NAME = gphoton



EXISTING

RESILIENT CONNECTORS CONFORMING TO ASTM C-923 SHALL BE USED BETWEEN DRAINAGE AND SANITARY STRUCTURES AND PIPES.

PROPOSED STORM SEWER CITY OF EVANSTON JURISDICTION



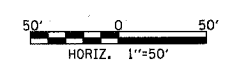
PROPOSED

1051 PERIMETER DRIVE, SUITE 1025
 BAYVIEW PARK, ILLINOIS 60173
 (630) 955-9999



| REVISIONS | |
|-----------|------|
| NAME | DATE |
| | |
| | |
| | |
| | |
| | |
| | |
| | |
| | |
| | |
| | |

ILLINOIS DEPARTMENT OF TRANSPORTATION
 SANITARY SEWER PLAN
 SHERIDAN ROAD
 STATION 1100+00 TO STATION 1113+20.81



DATE 7/13/07
 DRAWN BY LTD
 CHECKED BY BJL