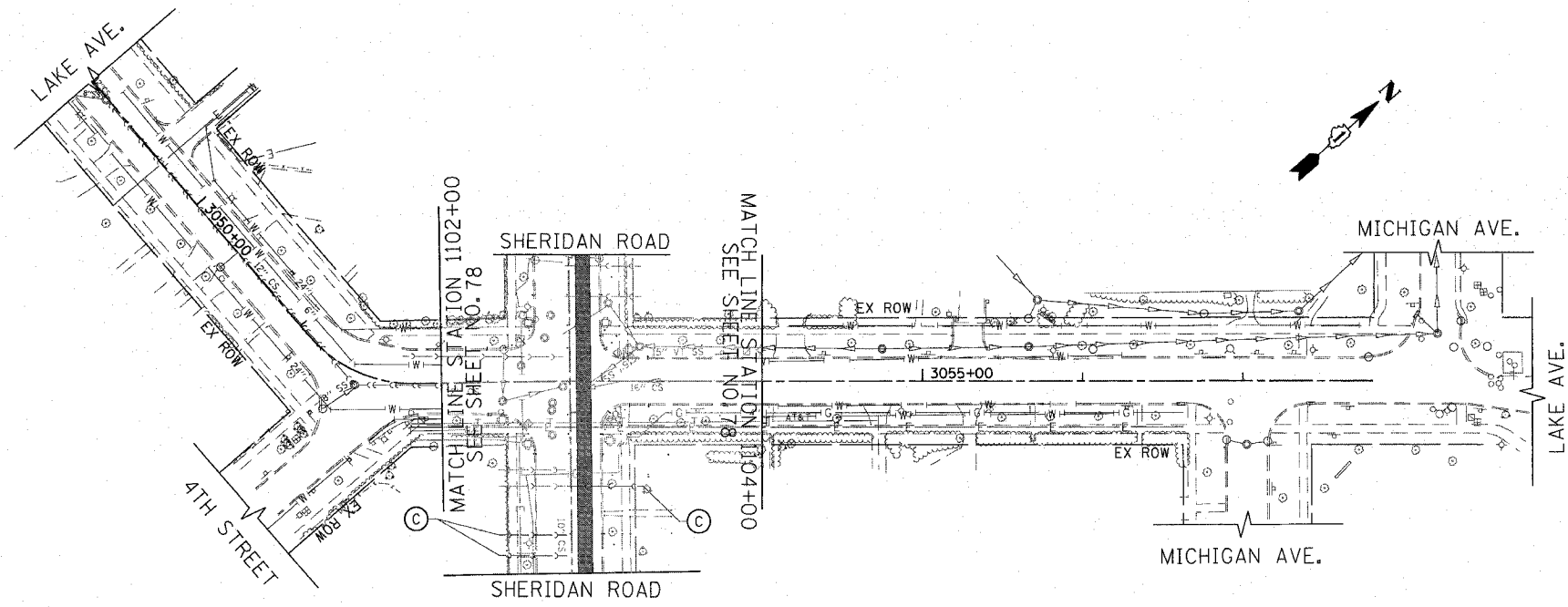
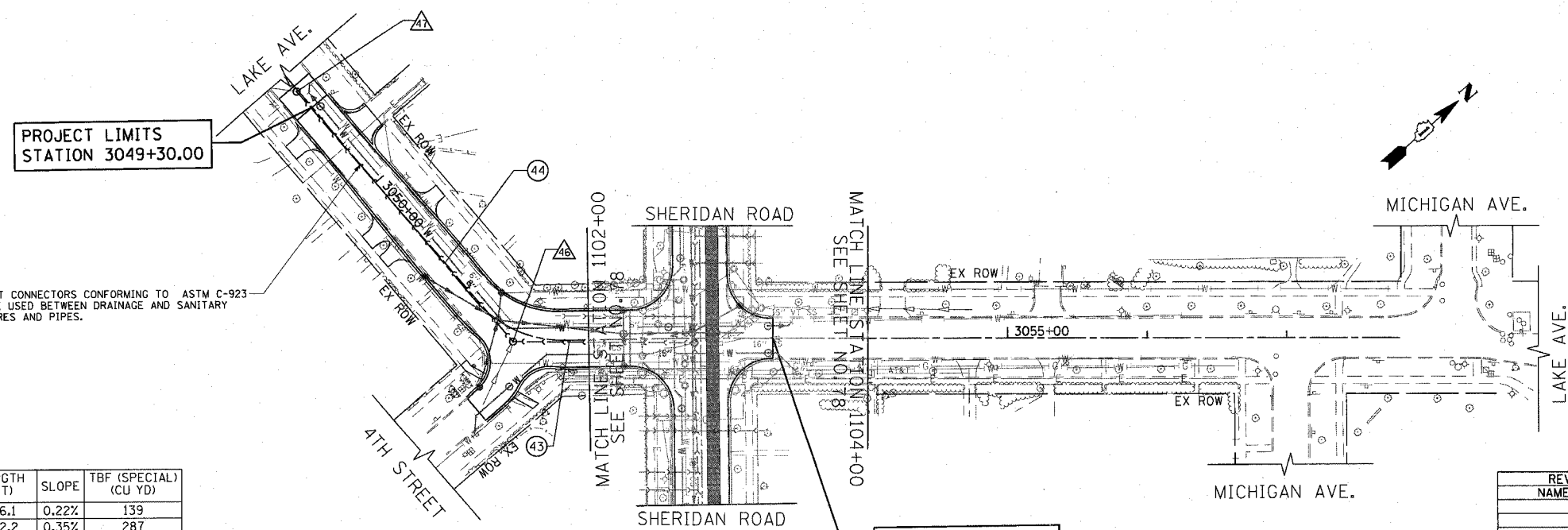


F.A.U. RTE.	SECTION	COUNTY	TOTAL SHEETS	SHEET NO.
3509	00-00173-00-FP	COOK	246	86
STA. 3049+00		TO STA. 3057+82		
FED. ROAD DIST. NO. 7		ILLINOIS FED. AID PROJECT		

PLOT DATE = 7/12/2007  
 FILE NAME = g:\CD06\0000\Road\Sheets\1102\1102.sht  
 PLOT SCALE = 80.0000 / 1" = 80.0000'  
 USER NAME = bjoeman



EXISTING



PROJECT LIMITS  
STATION 3049+30.00

RESILIENT CONNECTORS CONFORMING TO ASTM C-923  
SHALL BE USED BETWEEN DRAINAGE AND SANITARY  
STRUCTURES AND PIPES.

PROJECT LIMITS  
STATION 3053+31.77

PROPOSED

SCHEDULE OF SANITARY SEWER PIPES

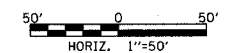
PIPE NUMBER	ITEM	CLASS	SIZE	LENGTH (FT)	SLOPE	TBF (SPECIAL) (CU YD)
43	SANS	WM REQMS	12"	126.1	0.22%	139
44	SANS	WM REQMS	12"	232.2	0.35%	287

SCHEDULE OF SANITARY SEWER STRUCTURES

STRUCTURE NUMBER	STATION	OFFSET (FT)	TYPE	FRAME & GRATE	RIM ELEVATION	INVERT								
						NORTH	NE	EAST	SE	SOUTH	SW	WEST	NW	
46	3051+48.0	8.2'	RT	DROP MH, 4' DIA	T1 F, CL	604.65		595.15		597.95				595.15
47	3049+14.1	1.2'	RT	SAN MH TA 4' DIA	T1 F, CL	605.44			594.34			599.44	594.34	

REVISIONS	
NAME	DATE

ILLINOIS DEPARTMENT OF TRANSPORTATION  
**SANITARY SEWER PLAN**  
 LAKE AVENUE  
 STATION 3049+00 TO STATION 3057+82



DATE 7/13/07  
 DRAWN BY LTD  
 CHECKED BY BJL

1051 PERIMETER DRIVE, SUITE 1025  
 BOSTON, ILLINOIS 60013  
 (847) 985-9800

