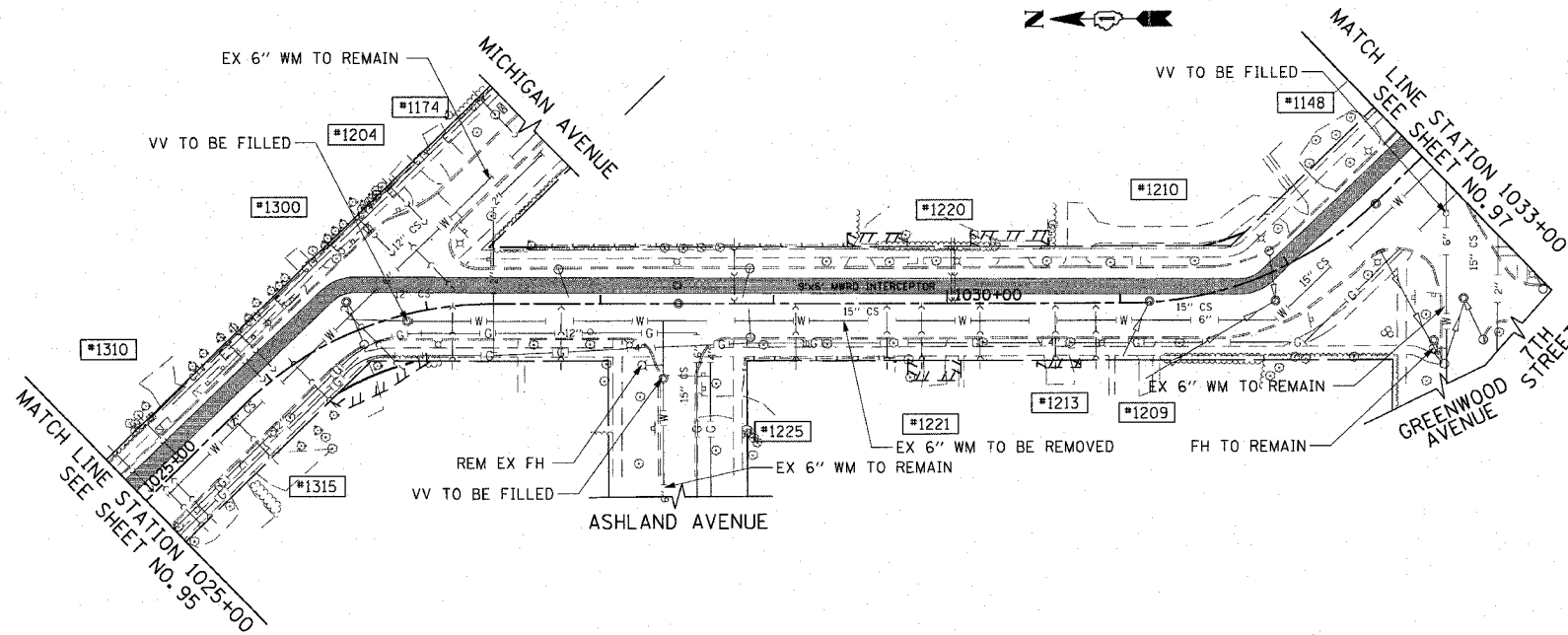


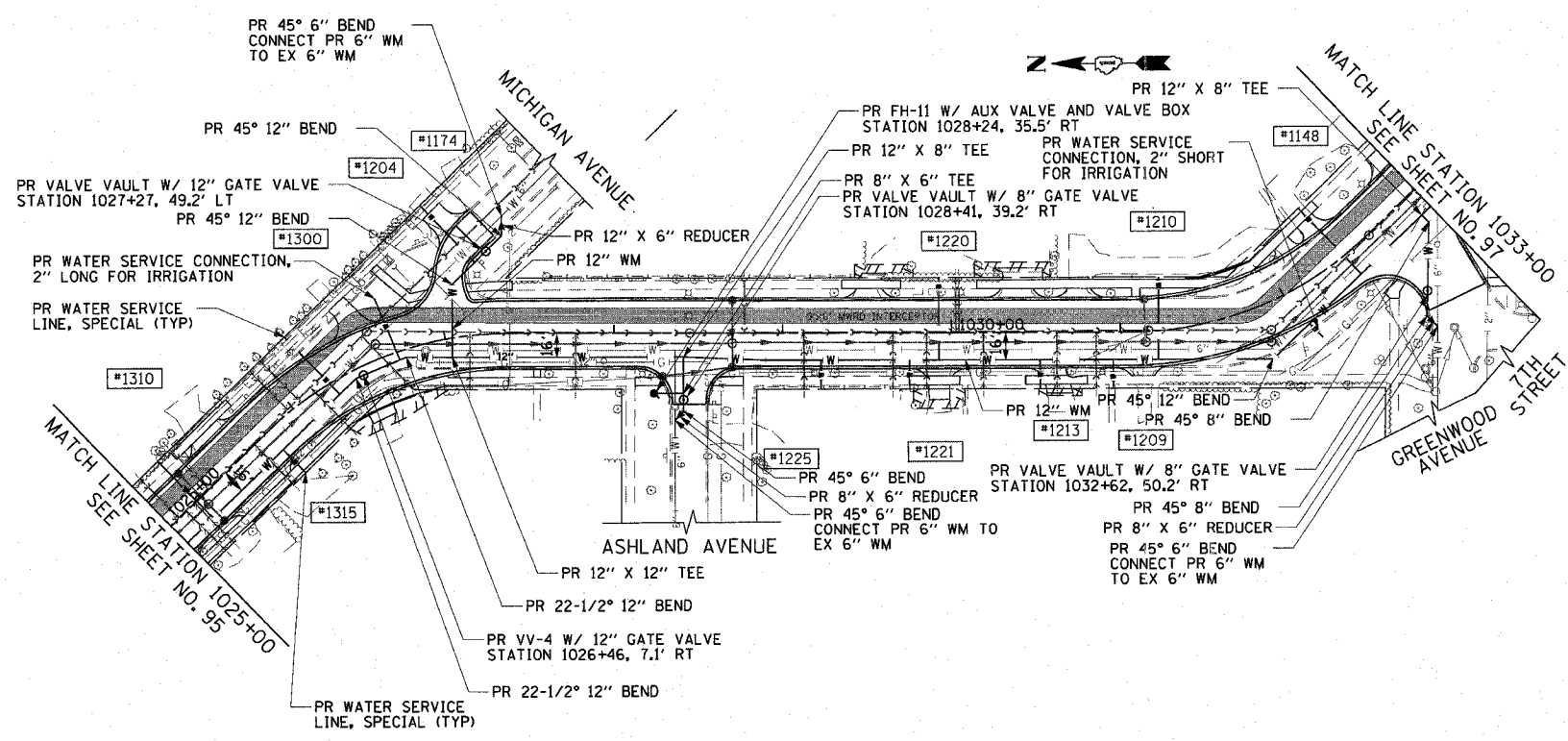
F.A.U. RTE.	SECTION	COUNTY	TOTAL SHEETS	SHEET NO.
3509	00-00173-00-FP	COOK	246	96
STA. 1025+00		TO STA. 1033+00		
FED. ROAD DIST. NO. 7		ILLINOIS FED. AID PROJECT		

PLOT DATE = 7/12/2007
 FILE NAME = g:\c096\0006\road\sheet\mp183.dwg
 PLOT SCALE = 1/8"=1'-0"
 USER NAME = bjohnson



EXISTING

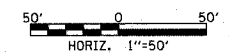
SEE SHEET NO. 94 FOR WATER MAIN NOTES.



PROPOSED

REVISIONS	
NAME	DATE

ILLINOIS DEPARTMENT OF TRANSPORTATION
WATER MAIN PLAN
 SHERIDAN ROAD
 STATION 1025+00 TO STATION 1033+00
 DATE 7/13/07
 DRAWN BY LTD
 CHECKED BY BJL



1051 PERIMETER DRIVE, SUITE 1025
 CHICAGO, ILLINOIS 60673
 (847) 865-9800

