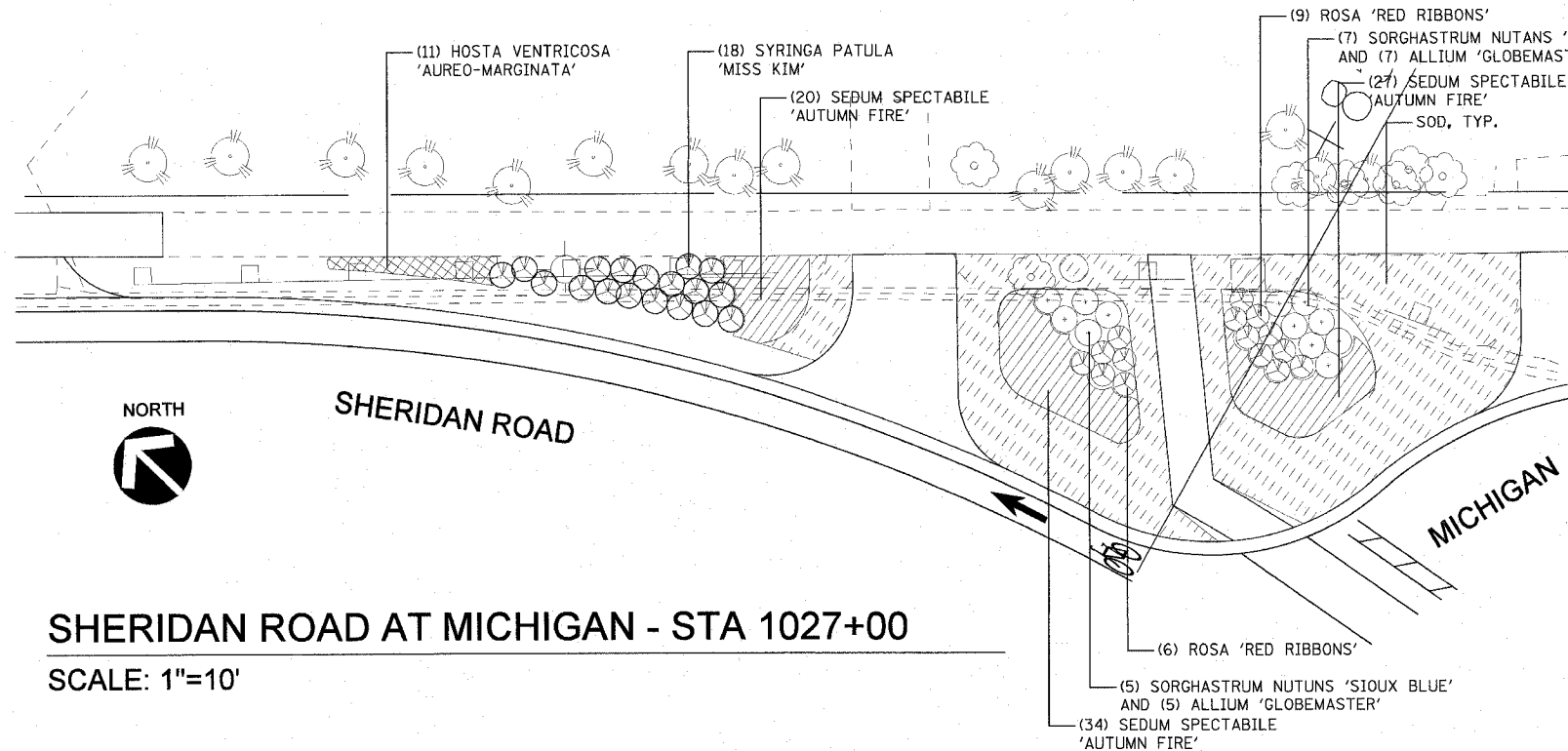


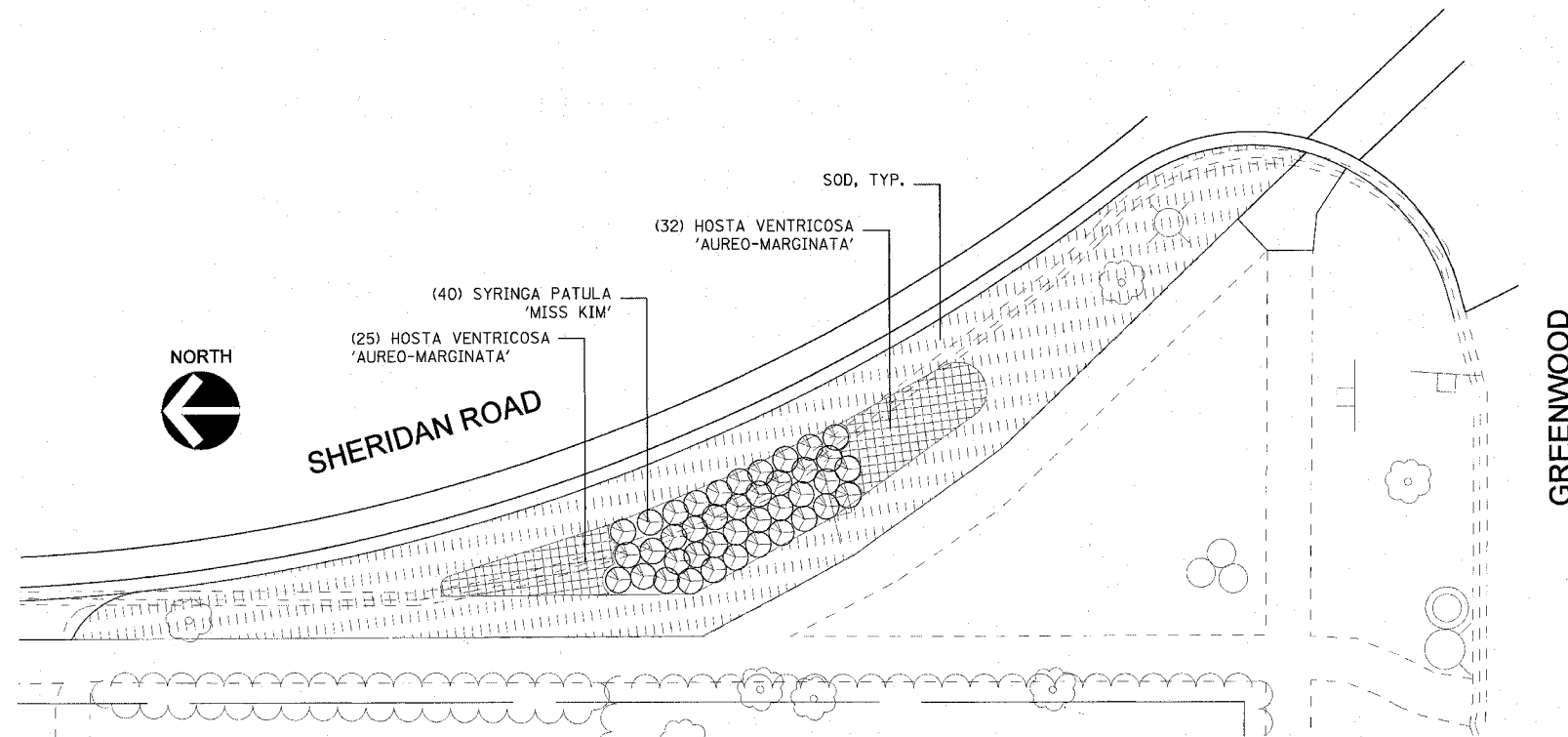
F.A.U. RTE.	SECTION	COUNTY	TOTAL SHEETS	SHEET NO.
3509	00-00173-00-FP	COOK	246	138
STA.		TO STA.		
FED. ROAD DIST. NO. 7		ILLINOIS	FED. AID PROJECT	



SHERIDAN ROAD AT MICHIGAN - STA 1027+00
SCALE: 1"=10'

SHERIDAN ROAD - SHEET ONE PLANT LIST

KEY	BOTANICAL NAME	COMMON NAME	SIZE	SPACING	TOTALS
SHRUBS					
	ROSA 'RED RIBBONS'	RED RIBBONS SHRUB ROSE	#3	30' O.C.	15
	SYRINGA PATULA 'MISS KIM'	MISS KIM KOREAN LILAC	36' B/B	36' O.C.	58
PERENNIALS AND ORNAMENTAL GRASSES					
	HOSTA VENTRICOSA 'AUREO-MARGINATA'	HOSTA	#1 POT	24' O.C.	68
	SEDUM SPECTABILE 'AUTUMN FIRE'	AUTUMN FIRE STONECROP	#1 POT	24' O.C.	8
	SORGHASTRUM NUTANS 'SIOUX BLUE'	INDIAN GRASS	#2 POT	36' O.C.	12
BULBS					
	ALLIUM 'GLOBEMASTER'	ORNAMENTAL ONION	DN II	VARIES	12



SHERIDAN ROAD AT GREENWOOD - STA 1033+00
SCALE: 1"=10'

REVISIONS	
NAME	DATE

ILLINOIS DEPARTMENT OF TRANSPORTATION

PLANTING PLAN

SHERIDAN ROAD

STATION 1027+00 AND STATION 1033+00

DATE 7/13/07

DRAWN BY AT/MS

CHECKED BY JE

10' 0 10'

HORIZ. 1"=10'

DLK THE FINE ARTS BUILDING
410 S. MICHIGAN AVENUE, SUITE 400
CHICAGO, ILLINOIS 60606
PHONE: 312.322.0811
Civic Design

1051 PERMETER DRIVE, SUITE 1025
CHICAGO, ILLINOIS 60677
(847) 565-8600

TranSystems