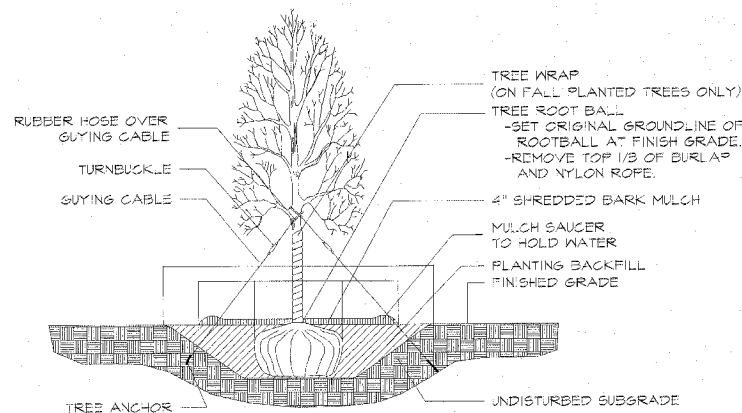
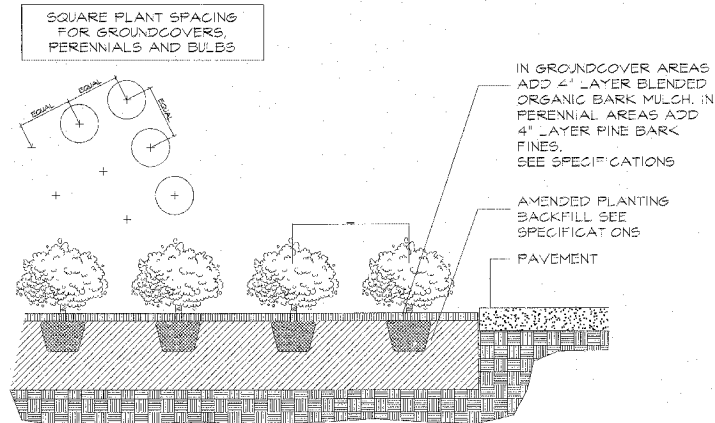


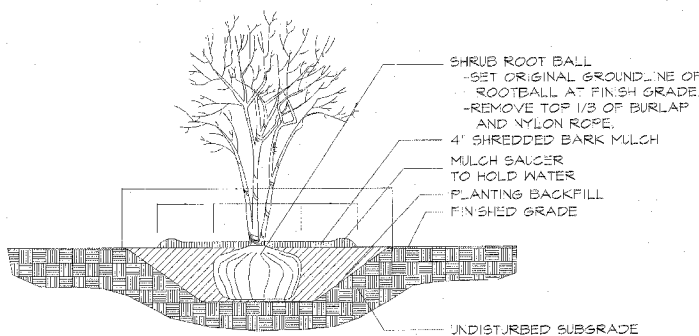
F.A.U. RTE.	SECTION	COUNTY	TOTAL SHEETS	SHEET NO.
3509	00-00173-00-FP	COOK	246	140
STA.		TO STA.		
FED. ROAD DIST. NO. 7 ILLINOIS FED. AID PROJECT				



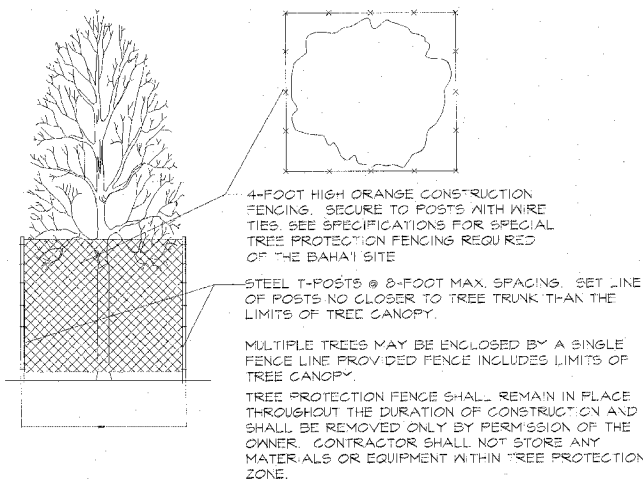
1 SHADE TREE PLANTING DETAIL
No Scale



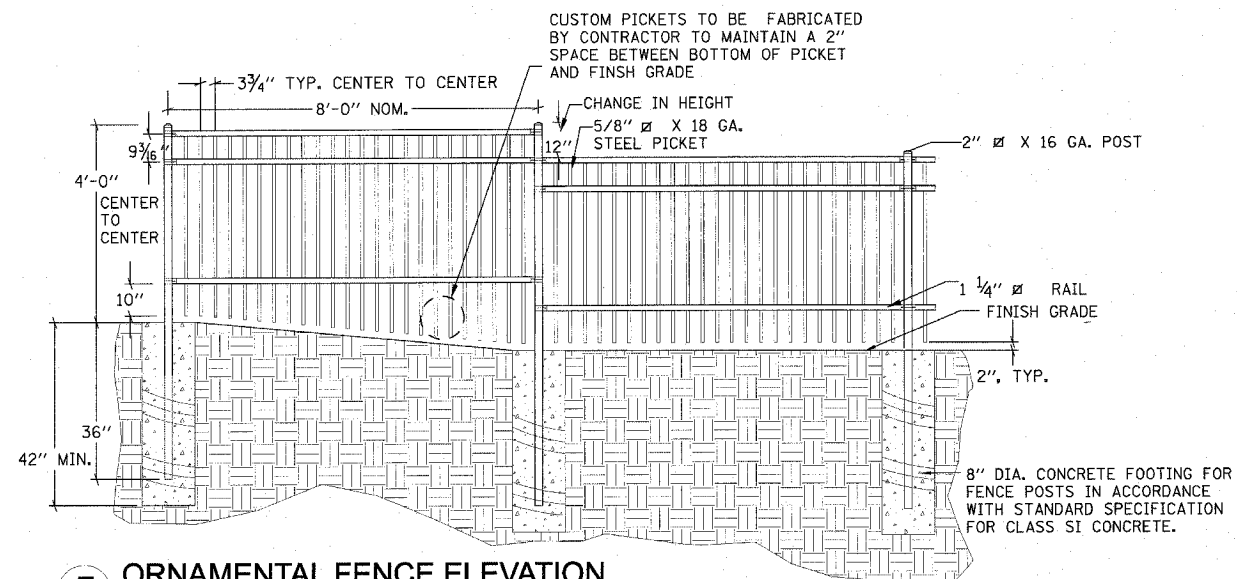
2 GROUNDCOVER / PERENNIAL PLANTING DETAIL
No Scale



3 SHRUB PLANTING DETAIL
No Scale



4 TREE PROTECTION DETAIL
No Scale



5 ORNAMENTAL FENCE ELEVATION
No Scale

NOTE: FENCE SYSTEM AND COMPONENTS, FINISHING, FABRICATION, AND INSTALLATION SHALL BE IN ACCORDANCE WITH TECHNICAL SPECIFICATION FOR ORNAMENTAL FENCE. SUGGESTED MANUFACTURER AND STYLE SHALL BE AMERISTAR MONTAGE - MAJESTIC 3-RAIL OR APPROVED EQUAL. COLOR SHALL BE BLACK.

SHERIDAN ROAD - MASTER PLANT LIST

KEY	BOTANICAL NAME	COMMON NAME	SIZE	SPACING	TOTALS
ORNAMENTAL TREES					
	SYRINGA RETICULATA 'IVORY SILK'	IVORY SILK JAPANESE TREE LILAC	8'-10' B/B	SEE PLANS	1

EVERGREEN SHRUBS					
	JUNIPERUS HORIZONTALIS 'HUGHES'	HUGHES SPREADING JUNIPER	#5	48" O.C.	17
	JUNIPERUS SABINA 'CALGARY CARPET'	CALGARY CARPET SAVIN JUNIPER	#5	3'-6" O.C.	24
	TAXUS X MEDIA 'RUNYAN'	RUNYAN SPREADING YEW	30' HT. B/B	36" O.C.	8

SHRUBS					
	ROSA 'RED RIBBONS'	RED RIBBONS SHRUB ROSE	#3	30" O.C.	36
	SYRINGA PATULA 'MISS KIM'	MISS KIM KOREAN LILAC	36" B/B	36" O.C.	38

PERENNIALS AND ORNAMENTAL GRASSES					
	ALCHEMILLA MOLLIS	LADY'S MANTLE	#1 POT	18" O.C.	69
	HEMEROCALLIS 'GUSTARD CANDY'	GUSTARD CANDY DAYLILY	#1 POT	18" O.C.	38
	HEMEROCALLIS 'HUSH LITTLE BABY'	HUSH LITTLE BABY DAYLILY	#1 POT	18" O.C.	38
	HEMEROCALLIS 'JOVIAL'	JOVIAL DAYLILY	#1 POT	18" O.C.	38
	HOSTA VENTRICOSA 'AUREO-MARGINATA'	HOSTA	#1 POT	24" O.C.	69
	SEDUM SPECTABILE 'AUTUMN FIRE'	AUTUMN FIRE STONECROP	#1 POT	24" O.C.	81
	SORGHASTRUM NUTANS 'SIOUX BLUE'	INDIAN GRASS	#2 POT	36" O.C.	23

ANNUALS					
	LAN'TANA CAMARA	COMMON VERBENA	1 QT.	12" O.C.	46

VINES					
	HYDRANGEA ANOMALA 'PET OLARIS'	CLIMBING HYDRANGEA	#2	3' O.C.	110

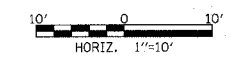
BULBS					
	ALLIUM 'GLOBEMASTER'	ORNAMENTAL ONION	DN II	VARIES	27
	NARCISSUS 'FORTISSIMO'	FORTISSIMO DAFFODIL	DN II	VARIES	114

IRRIGATION NOTE: THE PLANTING AREA AT THE ENTRANCE TO GILLSON PARK & MICHIGAN, AND THE PLANTING AREA AT 7TH AND GREENWOOD SHALL BE IRRIGATED AND PAID FOR AS IRRIGATION SYSTEM.

REVISIONS	
NAME	DATE

ILLINOIS DEPARTMENT OF TRANSPORTATION

PLANTING DETAILS
SHERIDAN ROAD



DATE 7/13/07
DRAWN BY AT/MS
CHECKED BY JE