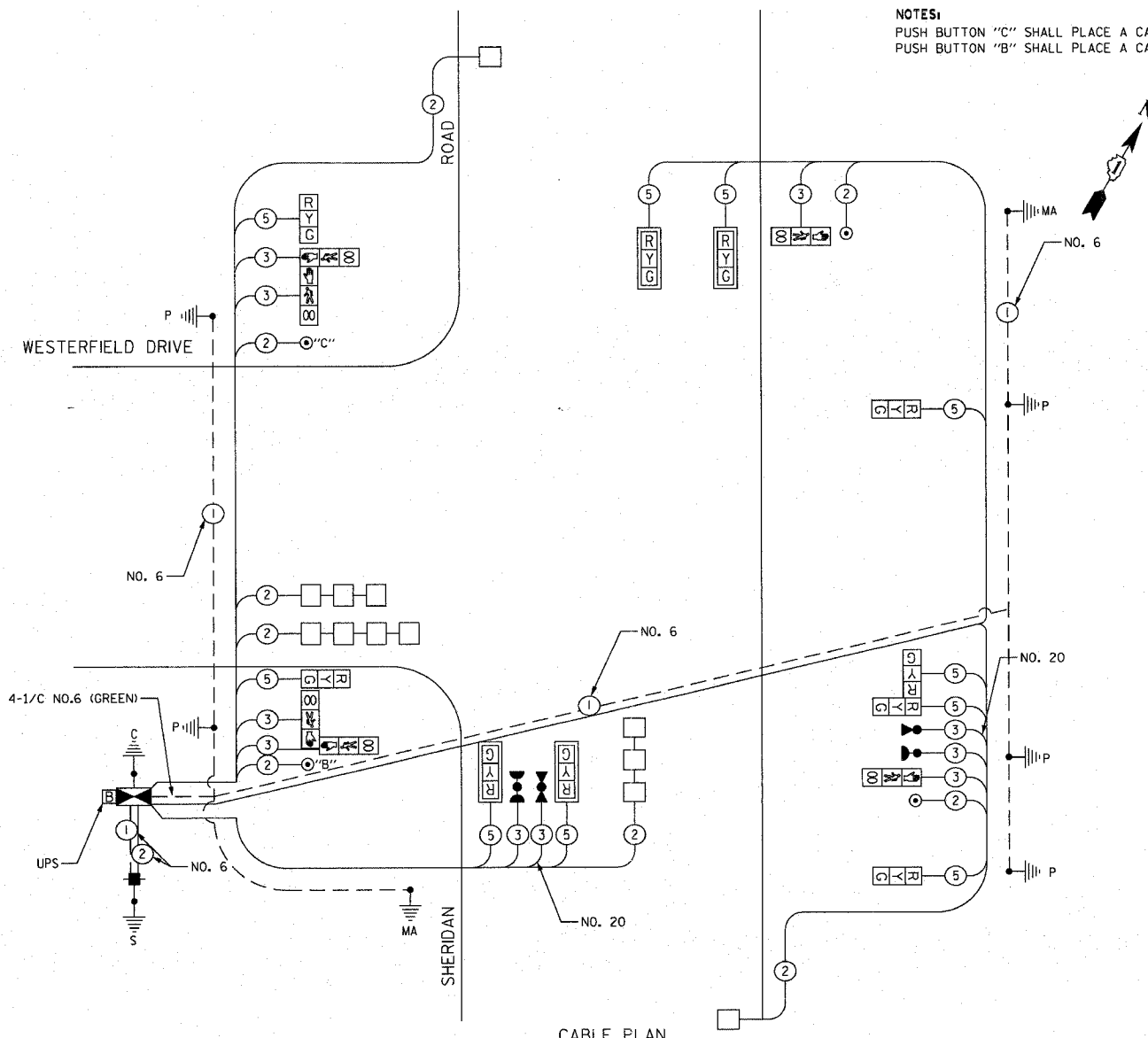


F.A.U. RTE.	SECTION	COUNTY	TOTAL SHEETS	SHEET NO.
3509	00-00173-00-FP	COOK	246	145
STA.		TO STA.		
FED. ROAD DIST. NO. 7		ILLINOIS FED. AID PROJECT		

PLOT DATE = 7/12/2007
 FILE NAME = G:\CD\86\8686\Road\Sheets\trp\Westerfield.dgn
 PLOT SCALE = 1/8" = 1' IN.
 USER NAME = tjforman

SCHEDULE OF QUANTITIES

QUANTITY	UNIT	ITEM
159	FOOT	CONDUIT IN TRENCH, 2" DIA., GALVANIZED STEEL
142	FOOT	CONDUIT IN TRENCH, 2 1/2" DIA., GALVANIZED STEEL
4	FOOT	CONDUIT IN TRENCH, 4" DIA., GALVANIZED STEEL
371	FOOT	CONDUIT PUSHED, 2" DIA., GALVANIZED STEEL
252	FOOT	CONDUIT PUSHED, 2 1/2" DIA., GALVANIZED STEEL
133	FOOT	CONDUIT PUSHED, 4" DIA., GALVANIZED STEEL
5	EACH	HANDHOLE
2	EACH	HEAVY-DUTY HANDHOLE
1	EACH	DOUBLE HANDHOLE
273	FOOT	TRENCH AND BACKFILL FOR ELECTRICAL WORK
1	EACH	FULL-ACTUATED CONTROLLER AND TYPE IV CABINET
453	FOOT	ELECTRIC CABLE IN CONDUIT, SIGNAL NO. 14 2C
840	FOOT	ELECTRIC CABLE IN CONDUIT, SIGNAL NO. 14 3C
1,358	FOOT	ELECTRIC CABLE IN CONDUIT, SIGNAL NO. 14 5C
954	FOOT	ELECTRIC CABLE IN CONDUIT, LEAD-IN, NO. 14 1 PAIR
125	FOOT	ELECTRIC CABLE IN CONDUIT, SERVICE, NO. 6 2 C
1	EACH	STEEL COMBINATION MAST ARM ASSEMBLY AND POLE 22 FT. (SPECIAL)
1	EACH	STEEL COMBINATION MAST ARM ASSEMBLY AND POLE 24 FT. (SPECIAL)
24	FOOT	CONCRETE FOUNDATION, TYPE A
4	FOOT	CONCRETE FOUNDATION, TYPE C
30	FOOT	CONCRETE FOUNDATION, TYPE E 30-INCH DIAMETER
4	EACH	SIGNAL HEAD, LED, 1-FACE, 3-SECTION, BRACKET MOUNTED
4	EACH	SIGNAL HEAD, LED, 1-FACE, 3-SECTION, MAST-ARM MOUNTED
1	EACH	SIGNAL HEAD, LED, 2-FACE, 3-SECTION, BRACKET MOUNTED
2	EACH	PEDESTRIAN SIGNAL HEAD, LED, 1-FACE, BRACKET MOUNTED WITH COUNTDOWN TIMER
2	EACH	PEDESTRIAN SIGNAL HEAD, LED, 2-FACE, BRACKET MOUNTED WITH COUNTDOWN TIMER
4	EACH	TRAFFIC SIGNAL BACKPLATE, LOUVERED, ALUMINUM
5	EACH	INDUCTIVE LOOP DETECTOR
444	FOOT	DETECTOR LOOP, TYPE I
2	EACH	LIGHT DETECTOR
1	EACH	LIGHT DETECTOR AMPLIFIER
4	EACH	PEDESTRIAN PUSH-BUTTON
1	EACH	TEMPORARY TRAFFIC SIGNAL INSTALLATION
1	EACH	REMOVE EXISTING TRAFFIC SIGNAL EQUIPMENT
5	EACH	REMOVE EXISTING HANDHOLE
1	EACH	SERVICE INSTALLATION - GROUND MOUNTED
508	FOOT	ELECTRIC CABLE IN CONDUIT, GROUNDING, NO. 6 1C
265	FOOT	ELECTRIC CABLE IN CONDUIT NO. 20 3/C, TWISTED, SHIELDED
4	EACH	TRAFFIC SIGNAL POST, 14 FOOT, (SPECIAL)
1	EACH	TRAFFIC SIGNAL POST, 18 FOOT, (SPECIAL)
7	EACH	REMOVE EXISTING CONCRETE FOUNDATION
1	EACH	UNINTERRUPTIBLE POWER SUPPLY

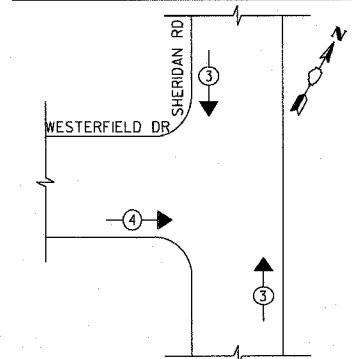


NOTES:
 PUSH BUTTON "C" SHALL PLACE A CALL IN PHASES 6 AND 8
 PUSH BUTTON "B" SHALL PLACE A CALL IN PHASES 4 AND 6

CABLE PLAN LEGEND

EXISTING	PROPOSED	DESCRIPTION
⊗	⊗	8" (200mm) TRAFFIC SIGNAL SECTION
⊗	⊗	12" (300mm) TRAFFIC SIGNAL SECTION
⊗	⊗	12" (300mm) PEDESTRIAN SIGNAL SECTION
⊗	⊗	12" (300mm) PEDESTRIAN SIGNAL SECTION WITH COUNTDOWN TIMER
⊗	⊗	CONTROLLER CABINET
⊗	⊗	SERVICE INSTALLATION
⊗	⊗	TELEPHONE CONNECTION
⊗	⊗	MAGNETIC DETECTOR
⊗	⊗	VEHICLE DETECTOR, INDUCTION LOOP
⊗	⊗	EMERGENCY VEHICLE LIGHT DETECTOR
⊗	⊗	CONFIRMATION BEACON
⊗	⊗	PUSHBUTTON DETECTOR
⊗	⊗	DENOTES NUMBER OF CONDUCTORS
⊗	⊗	ALL CABLE NO. 14 EXCEPT AS INDICATED
⊗	⊗	ALL LOOP DETECTOR CABLE TO BE SHIELDED
⊗	⊗	GROUND CABLE IN CONDUIT NO. 6 SOLID COPPER (GREEN)
⊗	⊗	FIBER OPTIC CABLE IN CONDUIT NO. 62.5/125 MM12F SM12F
⊗	⊗	SIGNAL FACE WITH BACKPLATE
⊗	⊗	"P" INDICATES PROGRAMMED HEAD
⊗	⊗	RAILROAD CONTROL CABINET
⊗	⊗	ILLUMINATED SIGN, FIBER OPTIC "NO LEFT TURN"
⊗	⊗	ILLUMINATED SIGN, FIBER OPTIC "NO RIGHT TURN"
H/C	H/C	GROUND ROD AT HANDHOLE, DOUBLE HANDHOLE, OR CONTROLLER
P	P	GROUND ROD AT POST OR MAST ARM POLE
S	S	GROUND ROD AT ELECTRIC SERVICE INSTALLATION
⊗	⊗	UNINTERRUPTIBLE POWER SUPPLY

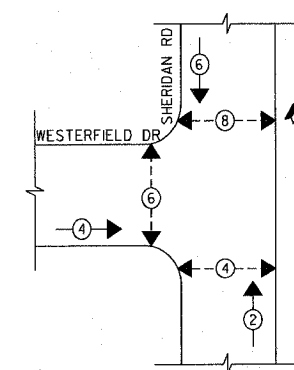
PROPOSED EMERGENCY VEHICLE PREEMPTION SEQUENCE



PROPOSED EMERGENCY VEHICLE PREEMPTORS

EMERGENCY VEHICLE PREEMPTOR	3	4
MOVEMENT	↑	→

PROPOSED CONTROLLER SEQUENCE



LEGEND

⊗	DUAL ENTRY PHASE
⊗	PEDESTRIAN PHASE
⊗	OVERLAP
*	NUMBER REFERS TO ASSOCIATED PHASE

PHASE DESIGNATION DIAGRAM



REVISIONS

NAME	DATE

ILLINOIS DEPARTMENT OF TRANSPORTATION
 SCHEDULE OF QUANTITIES, CABLE PLAN, AND PHASE DESIGNATION DIAGRAM
 SHERIDAN ROAD AND WESTERFIELD DRIVE
 SCALE NOT TO SCALE
 DATE 7/12/2007
 DRAWN BY SRS
 DESIGNED BY SRS
 CHECKED BY KMM

I.D.O.T. TRAFFIC SIGNAL INSTALLATION ELECTRICAL SERVICE REQUIREMENTS

TYPE	NO. LAMPS	INCAND.	LED	OPERATION	TOTAL WATTAGE
SIGNAL (RED)	10	135	17	0.50	85
(YELLOW)	10	135	25	0.25	63
(GREEN)	10	135	15	0.25	38
ARROW	0	0	0	0	--
PED SIGNAL	6	90	25	1.00	150
CONTROLLER	1	100	100	1.00	100
ILLUM. SIGN					

FLASHER 0.50 --
 ENERGY COSTS TO: TOTAL 436

VILLAGE OF WILMETTE
 1200 WILMETTE AVENUE
 WILMETTE, IL 60091

ENERGY SUPPLY CONTACT: MR. LARRY SHANK
 PHONE: (847) 816-5465
 COMPANY: COMED

FOUNDATION (DEPTH)	FT. (m)	CABLE SLACK	FT. (m)	VERTICAL	FT. (m)
TYPE A - POST	4 (1.2)	HANDHOLE	6.5 (2.0)	ALL FOUNDATIONS	3.5 (1.0)
D - CONTROLLER	4 (1.2)	DOUBLE HANDHOLE	13 (4.0)	MAST ARM (L) POLE	20'-4"-2"
E - M. ARM POLE		SIGNAL POST	2 (1.0)	16mH (-0.6m)	
24" (600mm)	10 (3.0)	CONTROLLER CAB.	1 (0.5)	BRACKET MOUNTED	13 (4.0)
30" (750mm)	15 (4.6)	FIBER OPTIC	13 (4.0)	PED. PUSHBUTTON	4 (1.2)
36" (900mm)	15 (4.6)	ELECTRIC SERVICE	1 (0.5)	ELECTRIC SERVICE	13.5 (4.1)
		GROUND CABLE	1 (0.5)	SERVICE TO GROUND	13.5 (4.1)
				POST MOUNTED	6 (1.8)

1051 PERIMETER DRIVE, SUITE 1025
 SPRINGFIELD, ILLINOIS 60173
 (617) 850-8800
TranSystems