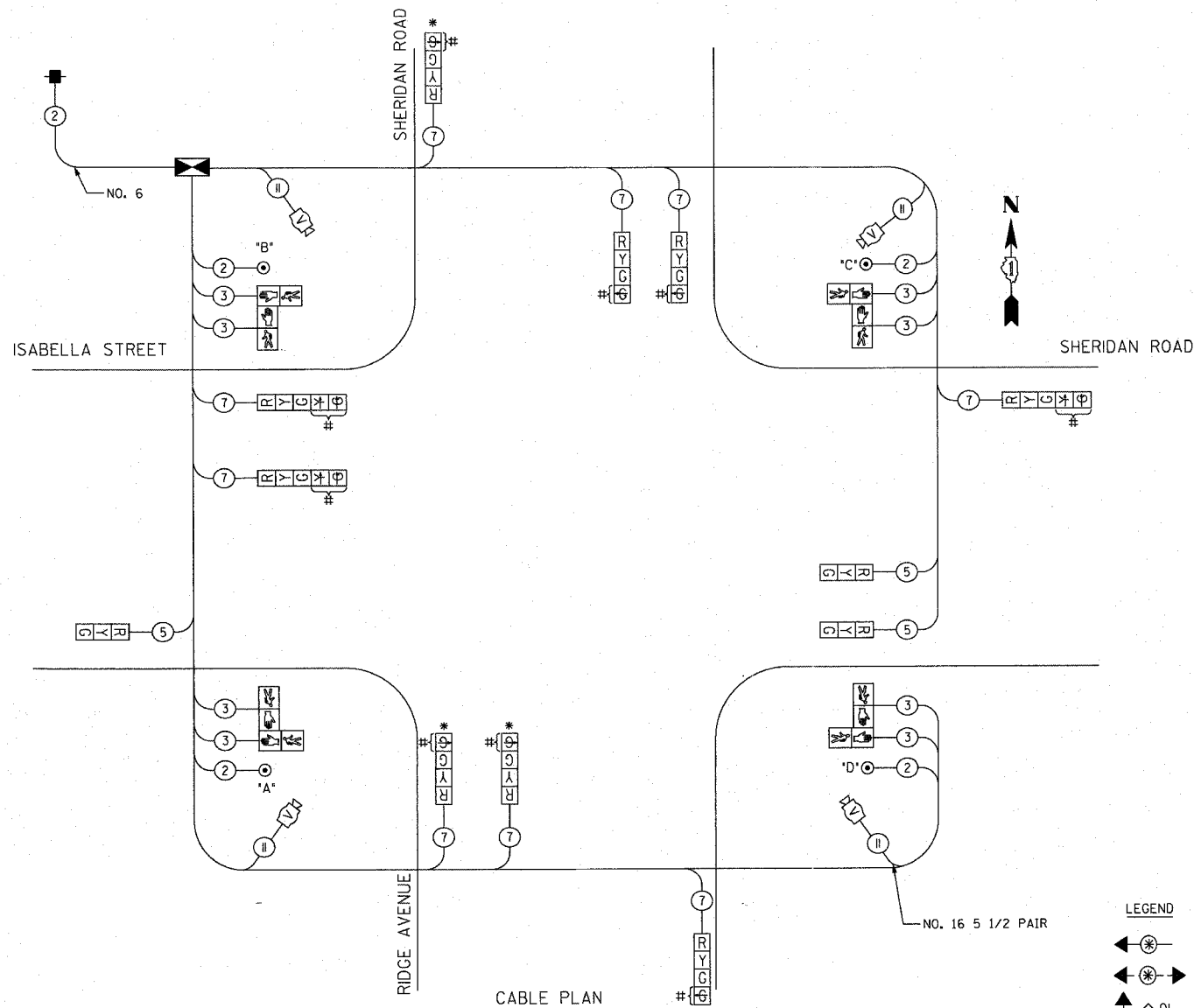


F.A.U. RTE.	SECTION	COUNTY	TOTAL SHEETS	SHEET NO.
3509	00-00173-00-FP	COOK	246	153
STA.		TO STA.		
FED. ROAD DIST. NO. 7		ILLINOIS FED. AID PROJECT		

NOTES:  
 PUSH BUTTON "A" SHALL PLACE A CALL IN PHASES 2 AND 4  
 PUSH BUTTON "B" SHALL PLACE A CALL IN PHASES 4 AND 6  
 PUSH BUTTON "C" SHALL PLACE A CALL IN PHASES 6 AND 8 (3)  
 PUSH BUTTON "D" SHALL PLACE A CALL IN PHASES 8 (3) AND 2

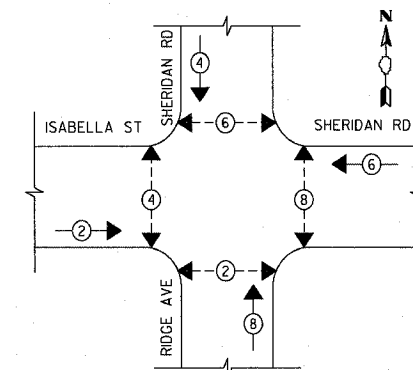
TEMPORARY CABLE DIAGRAM LEGEND

- TEMPORARY TRAFFIC SIGNAL SECTION OR PEDESTRIAN SIGNAL SECTION 12" (300mm)
- TEMPORARY CONTROLLER CABINET
- TEMPORARY SERVICE INSTALLATION
- INDICATES NUMBER OF CONDUCTORS IN CABLE. ALL CONDUCTORS TO BE NUMBER 14 AWG WIRE UNLESS OTHERWISE NOTED
- EMERGENCY VEHICLE LIGHT DETECTOR
- CONFIRMATION BEACON
- VEHICLE DETECTOR, INDUCTION LOOP
- PUSHBUTTON DETECTOR
- 12" (300mm) PEDESTRIAN SIGNAL SECTION
- MICROWAVE VEHICLE SENSOR
- VIDEO DETECTOR



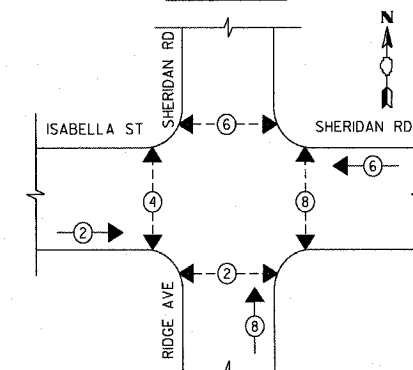
CABLE PLAN

TEMPORARY CONTROLLER SEQUENCE  
 PRE-STAGE AND STAGES 2A, 2B, 3A, 3B, 4, AND WINTER SHUTDOWN



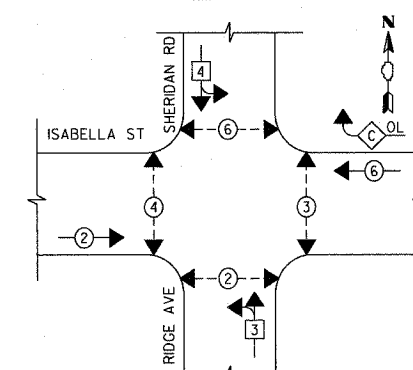
PHASE DESIGNATION DIAGRAM

TEMPORARY CONTROLLER SEQUENCE  
 STAGE 1A AND 1B



PHASE DESIGNATION DIAGRAM

PROPOSED CONTROLLER SEQUENCE  
 POST STAGE 4



PHASE DESIGNATION DIAGRAM

LEGEND

- DUAL ENTRY PHASE
- PEDESTRIAN PHASE
- OVERLAP
- NUMBER REFERS TO ASSOCIATED PHASE

CONSTRUCTION NOTES:

- DURING THE MAINTENANCE OF TRAFFIC PRE-STAGE AND STAGES 1, 2, 3 AND 4, THE SIGNAL HEADS SHALL BE MOVED AS NECESSARY TO ALIGN WITH THE TRAFFIC LANES.
- THESE SIGNAL HEADS SHALL BE BAGGED DURING MAINTENANCE OF TRAFFIC STAGE 1A AND 1B DUE TO THE TRAFFIC BEING ONE-WAY NORTHBOUND.
- THESE SIGNAL LENSES SHALL BE DISPLAYED AFTER STAGE 4 IS COMPLETED IN CASE THE PERMANENT SIGNALS ARE NOT OPERATIONAL. DURING MAINTENANCE OF TRAFFIC PRE-STAGE AND STAGES 1 THROUGH 4, THEY SHALL BE BAGGED AND REMAIN INACTIVE. THE PROPOSED CONTROLLER SEQUENCE POST STAGE 4 SHALL BE USED FOR PHASING.

I.D.O.T. TRAFFIC SIGNAL INSTALLATION ELECTRICAL SERVICE REQUIREMENTS					TOTAL WATTAGE
TYPE	NO. LAMPS	WATTAGE		%OPERATION	
SIGNAL (RED)	12	135	17	0.25	102
(YELLOW)	12	135	25	0.25	75
(GREEN)	0	135	15	0.25	0
ARROW	6	90	25	1.00	150
PED SIGNAL CONTROLLER ILLUM. SIGN	1	100	100	1.00	100
FLASHER				0.50	--
ENERGY COSTS TO:				TOTAL=	472
CITY OF EVANSTON 2100 RIDGE AVENUE EVANSTON, IL 60201					
ENERGY SUPPLY CONTACT: MR. LARRY SHANK PHONE: (847) 816-5465 COMPANY: COMED					

REVISIONS	
NAME	DATE

ILLINOIS DEPARTMENT OF TRANSPORTATION  
 TEMPORARY CABLE PLAN AND  
 TEMPORARY PHASE DESIGNATION DIAGRAM  
 SHERIDAN ROAD AND ISABELLA AVENUE

SCALE NOT TO SCALE  
 DATE 7/12/2007

DRAWN BY SRS  
 DESIGNED BY SRS  
 CHECKED BY KMM

PLOT DATE = 7/12/2007  
 PLOT SCALE = 50.0000 / IN.  
 USER NAME = bjoelinen

1051 PERIMETER DRIVE, SUITE 1025  
 SHALIMBURG, ILLINOIS 60173  
 (847) 605-9600

