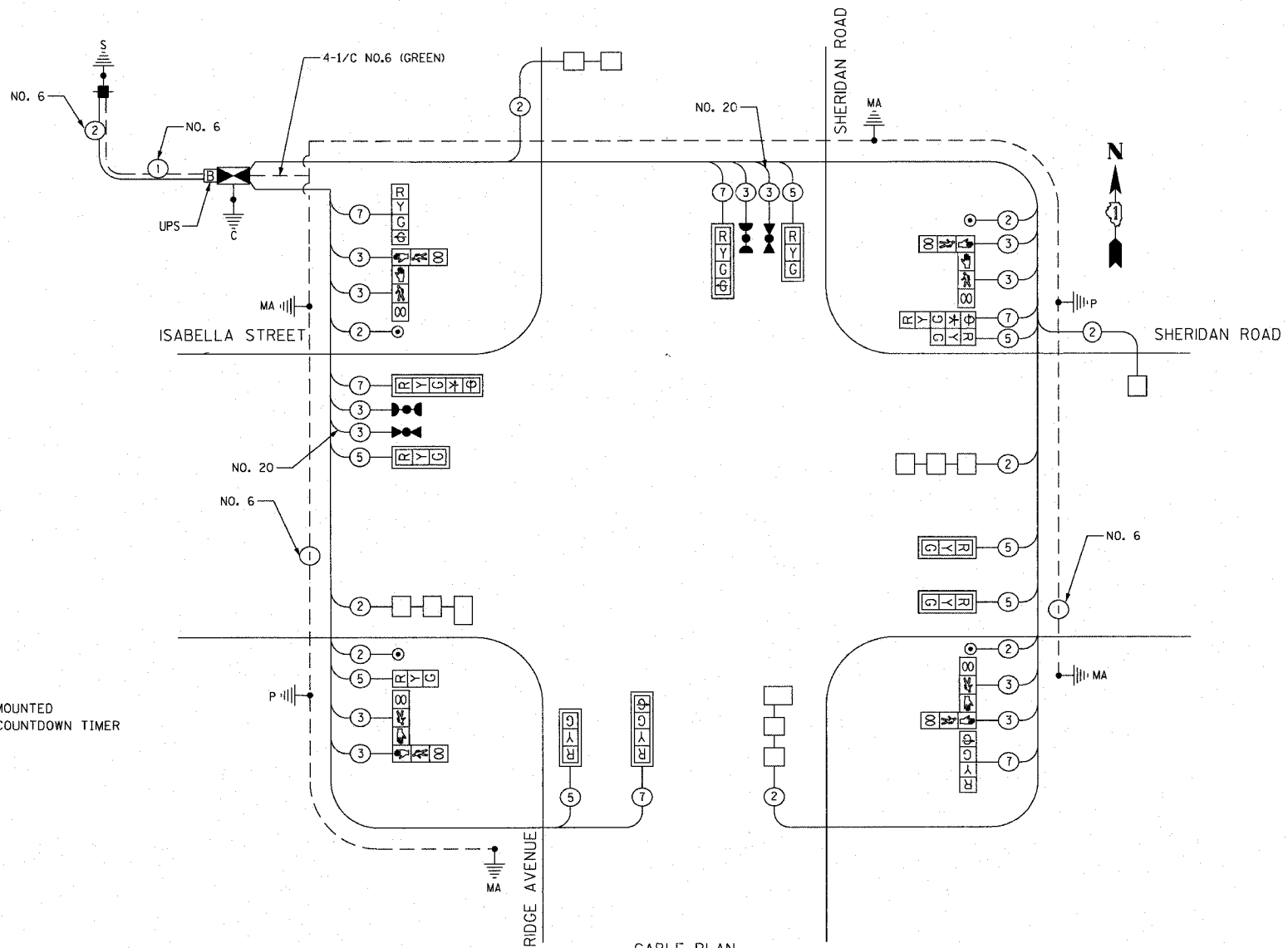


F.A.U. RTE.	SECTION	COUNTY	TOTAL SHEETS	SHEET NO.
3509	00-00173-00-FP	COOK	246	155
STA.		TO STA.		
FED. ROAD DIST. NO. 7		ILLINOIS FED. AID PROJECT		

SCHEDULE OF QUANTITIES

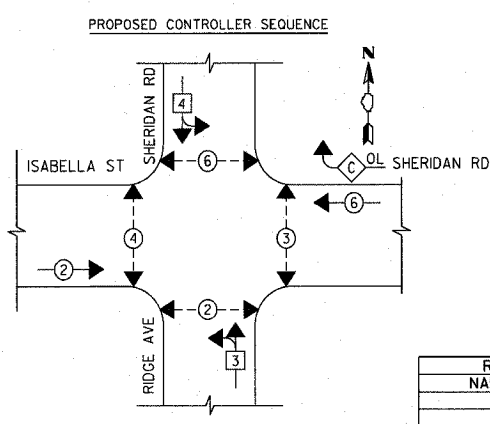
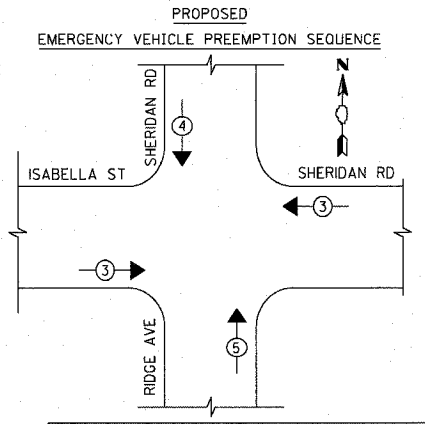
QUANTITY	UNIT	ITEM
566	FOOT	CONDUIT IN TRENCH, 2" DIA., GALVANIZED STEEL
52	FOOT	CONDUIT IN TRENCH, 2 1/2" DIA., GALVANIZED STEEL
12	FOOT	CONDUIT IN TRENCH, 3" DIA., GALVANIZED STEEL
10	FOOT	CONDUIT IN TRENCH, 4" DIA., GALVANIZED STEEL
167	FOOT	CONDUIT PUSHED, 2" DIA., GALVANIZED STEEL
268	FOOT	CONDUIT PUSHED, 4" DIA., GALVANIZED STEEL
5	EACH	HANDHOLE
1	EACH	HEAVY-DUTY HANDHOLE
2	EACH	DOUBLE HANDHOLE
640	FOOT	TRENCH AND BACKFILL FOR ELECTRICAL WORK
1	EACH	FULL-ACTUATED CONTROLLER AND TYPE IV CABINET, SPECIAL
828	FOOT	ELECTRIC CABLE IN CONDUIT, SIGNAL NO. 14 2C
1,120	FOOT	ELECTRIC CABLE IN CONDUIT, SIGNAL NO. 14 3C
1,203	FOOT	ELECTRIC CABLE IN CONDUIT, SIGNAL NO. 14 7C
826	FOOT	ELECTRIC CABLE IN CONDUIT, SIGNAL NO. 14 7C
1,093	FOOT	ELECTRIC CABLE IN CONDUIT, LEAD-IN, NO. 14 1 PAIR
181	FOOT	ELECTRIC CABLE IN CONDUIT, SERVICE, NO. 6 2 C
1	EACH	STEEL MAST ARM ASSEMBLY AND POLE, 20 FT. (SPECIAL)
1	EACH	STEEL MAST ARM ASSEMBLY AND POLE, 22 FT. (SPECIAL)
1	EACH	STEEL MAST ARM ASSEMBLY AND POLE, 26 FT. (SPECIAL)
1	EACH	STEEL MAST ARM ASSEMBLY AND POLE, 32 FT. (SPECIAL)
8	FOOT	CONCRETE FOUNDATION, TYPE A
4	FOOT	CONCRETE FOUNDATION, TYPE C
45	FOOT	CONCRETE FOUNDATION, TYPE E 30-INCH DIAMETER
15	FOOT	CONCRETE FOUNDATION, TYPE E 36-INCH DIAMETER
1	EACH	SIGNAL HEAD, LED, 1-FACE, 3-SECTION, BRACKET MOUNTED
5	EACH	SIGNAL HEAD, LED, 1-FACE, 3-SECTION, MAST-ARM MOUNTED
2	EACH	SIGNAL HEAD, LED, 1-FACE, 4-SECTION, BRACKET MOUNTED
2	EACH	SIGNAL HEAD, LED, 1-FACE, 4-SECTION, MAST-ARM MOUNTED
1	EACH	SIGNAL HEAD, LED, 1-FACE, 5-SECTION, MAST-ARM MOUNTED
1	EACH	SIGNAL HEAD, LED, 2-FACE, 1-3 SECTION, 1-5 SECTION, BRACKET MOUNTED
4	EACH	PEDESTRIAN SIGNAL HEAD, LED, 2-FACE, BRACKET MOUNTED WITH COUNTDOWN TIMER
8	EACH	TRAFFIC SIGNAL BACKPLATE, LOUVERED, ALUMINUM
5	EACH	INDUCTIVE LOOP DETECTOR
450	FOOT	DETECTOR LOOP, TYPE I
2	EACH	LIGHT DETECTOR
1	EACH	LIGHT DETECTOR AMPLIFIER
4	EACH	PEDESTRIAN PUSH-BUTTON
1	EACH	TEMPORARY TRAFFIC SIGNAL INSTALLATION
1	EACH	REMOVE EXISTING TRAFFIC SIGNAL EQUIPMENT
3	EACH	REMOVE EXISTING HANDHOLE
1	EACH	SERVICE INSTALLATION - POLE MOUNTED
517	FOOT	ELECTRIC CABLE IN CONDUIT, GROUNDING, NO. 6 1C
277	FOOT	ELECTRIC CABLE IN CONDUIT NO. 20 3/C, TWISTED, SHIELDED
1	EACH	TRAFFIC SIGNAL POST, 14 FOOT, (SPECIAL)
1	EACH	TRAFFIC SIGNAL POST, 16 FOOT, (SPECIAL)
5	EACH	REMOVE EXISTING CONCRETE FOUNDATION
5	EACH	UNINTERRUPTIBLE POWER SUPPLY



CABLE PLAN  
NOT TO SCALE

**CABLE PLAN LEGEND**

EXISTING	PROPOSED	DESCRIPTION
⊗	⊗	8" (200mm) TRAFFIC SIGNAL SECTION
⊗	⊗	12" (300mm) TRAFFIC SIGNAL SECTION
⊗	⊗	12" (300mm) PEDESTRIAN SIGNAL SECTION
⊗	⊗	12" (300mm) PEDESTRIAN SIGNAL SECTION WITH COUNTDOWN TIMER
⊗	⊗	CONTROLLER CABINET
⊗	⊗	SERVICE INSTALLATION
⊗	⊗	TELEPHONE CONNECTION
⊗	⊗	MAGNETIC DETECTOR
⊗	⊗	VEHICLE DETECTOR, INDUCTION LOOP
⊗	⊗	EMERGENCY VEHICLE LIGHT DETECTOR
⊗	⊗	CONFIRMATION BEACON
⊗	⊗	PUSHBUTTON DETECTOR
⊗	⊗	DENOTES NUMBER OF CONDUCTORS
⊗	⊗	ALL CABLE NO. 14 EXCEPT AS INDICATED
⊗	⊗	ALL LOOP DETECTOR CABLE TO BE SHIELDED
⊗	⊗	GROUND CABLE IN CONDUIT NO. 6 SOLID COPPER (GREEN)
⊗	⊗	FIBER OPTIC CABLE IN CONDUIT NO. 62.5/125 MM12F SM12F
⊗	⊗	SIGNAL FACE WITH BACKPLATE
⊗	⊗	"P" INDICATES PROGRAMMED HEAD
⊗	⊗	RAILROAD CONTROL CABINET
⊗	⊗	ILLUMINATED SIGN, FIBER OPTIC "NO LEFT TURN"
⊗	⊗	ILLUMINATED SIGN, FIBER OPTIC "NO RIGHT TURN"
H/C	H/C	GROUND ROD AT HANDHOLE, DOUBLE HANDHOLE, OR CONTROLLER
P	P	GROUND ROD AT POST OR MAST ARM POLE
S	S	GROUND ROD AT ELECTRIC SERVICE INSTALLATION
⊗	⊗	UNINTERRUPTIBLE POWER SUPPLY



**LEGEND**

⊗	DUAL ENTRY PHASE
⊗	SINGLE ENTRY PHASE
⊗	PEDESTRIAN PHASE
⊗	OVERLAP
*	NUMBER REFERS TO ASSOCIATED PHASE

**PROPOSED EMERGENCY VEHICLE PREEMPTORS**

EMERGENCY VEHICLE PREEMPTOR	3	4	5
MOVEMENT	←	↓	↑

**REVISIONS**

NAME	DATE

ILLINOIS DEPARTMENT OF TRANSPORTATION  
 SCHEDULE OF QUANTITIES, CABLE PLAN,  
 AND PHASE DESIGNATION DIAGRAM  
 SHERIDAN ROAD AND ISABELLA AVENUE  
 SCALE NOT TO SCALE  
 DATE: 7/12/2007  
 DRAWN BY: SRS  
 DESIGNED BY: SRS  
 CHECKED BY: KMM

PLOT DATE = 7/12/2007  
 FILE NAME = C:\Cross\83964\Road\Sheets\tr-spl\roadtbl1.dwg  
 PLOT SCALE = 56.0000 / 1 IN.  
 USER NAME = b.johnson

1051 PERIMETER DRIVE, SUITE 1025  
 SHAMSBURG, ILLINOIS 60173  
 (847) 605-8600



**I.D.O.T. TRAFFIC SIGNAL INSTALLATION ELECTRICAL SERVICE REQUIREMENTS**

TYPE	NO. LAMPS	INCAND.	LED	OPERATION	TOTAL WATTAGE
SIGNAL (RED)	13	135	17	0.50	111
(YELLOW)	13	135	25	0.25	81
(GREEN)	17	135	15	0.25	64
ARROW	4	135	12	0.10	5
PED SIGNAL	8	90	25	1.00	200
CONTROLLER	1	100	100	1.00	100
ILLUM. SIGN					
FLASHER					
ENERGY COSTS TO:				0.50	--
TOTAL =					561

CITY OF EVANSTON  
 2100 RIDGE AVENUE  
 EVANSTON, IL 60201  
 ENERGY SUPPLY CONTACT: MR. LARRY SHANK  
 PHONE: (847) 816-5465  
 COMPANY: COMED

FOUNDATION (DEPTH)	FT. (m)	CABLE SLACK	FT. (m)	VERTICAL	FT. (m)
TYPE A - POST	4 (1.2)	HANDHOLE	6.5 (2.0)	ALL FOUNDATIONS	3.5 (1.0)
D - CONTROLLER	4 (1.2)	DOUBLE HANDHOLE	13 (4.0)	MAST ARM (L) POLE	20'±L-2"±
E - M. ARM POLE		SIGNAL POST	2 (1.0)	(6m±L-0.6m)±	
	10 (3.0)	CONTROLLER CAB.	1 (0.5)	BRACKET MOUNTED	13 (4.0)
	30" (750mm)	FIBER OPTIC	13 (4.0)	PED. PUSHBUTTON	4 (1.2)
	36" (900mm)	ELECTRIC SERVICE	1 (0.5)	ELECTRIC SERVICE	13.5 (4.1)
		GROUND CABLE	1 (0.5)	SERVICE TO GROUND	13.5 (4.1)
				POST MOUNTED	6 (1.8)