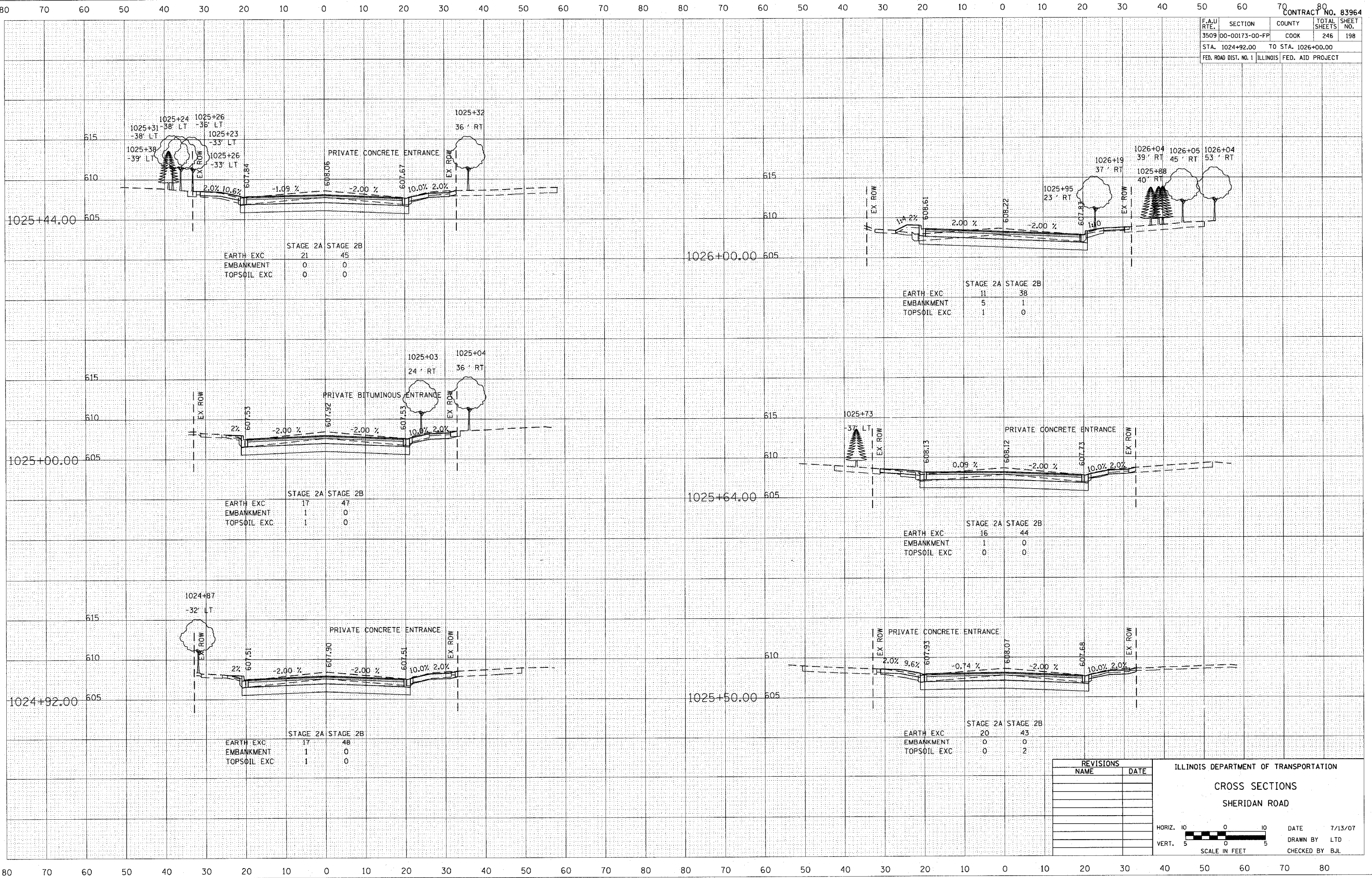


F.A.U. RTE.	SECTION	COUNTY	TOTAL SHEETS	SHEET NO.
3509	00-00173-00-FP	COOK	246	198
STA. 1024+92.00 TO STA. 1026+00.00				
FED. ROAD DIST. NO. 1 ILLINOIS FED. AID PROJECT				

DATE	BY
REVISIONS	
NO.	
DATE	BY
REVISIONS	
NO.	
DATE	BY
REVISIONS	
NO.	

DATE	BY
REVISIONS	
NO.	
DATE	BY
REVISIONS	
NO.	
DATE	BY
REVISIONS	
NO.	



REVISIONS	
NAME	DATE

ILLINOIS DEPARTMENT OF TRANSPORTATION

CROSS SECTIONS
SHERIDAN ROAD

HORIZ. 1" = 10'
VERT. 1" = 5'

SCALE IN FEET

DATE 7/13/07
DRAWN BY LTD
CHECKED BY BJL