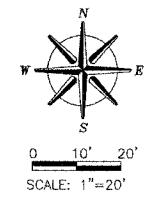
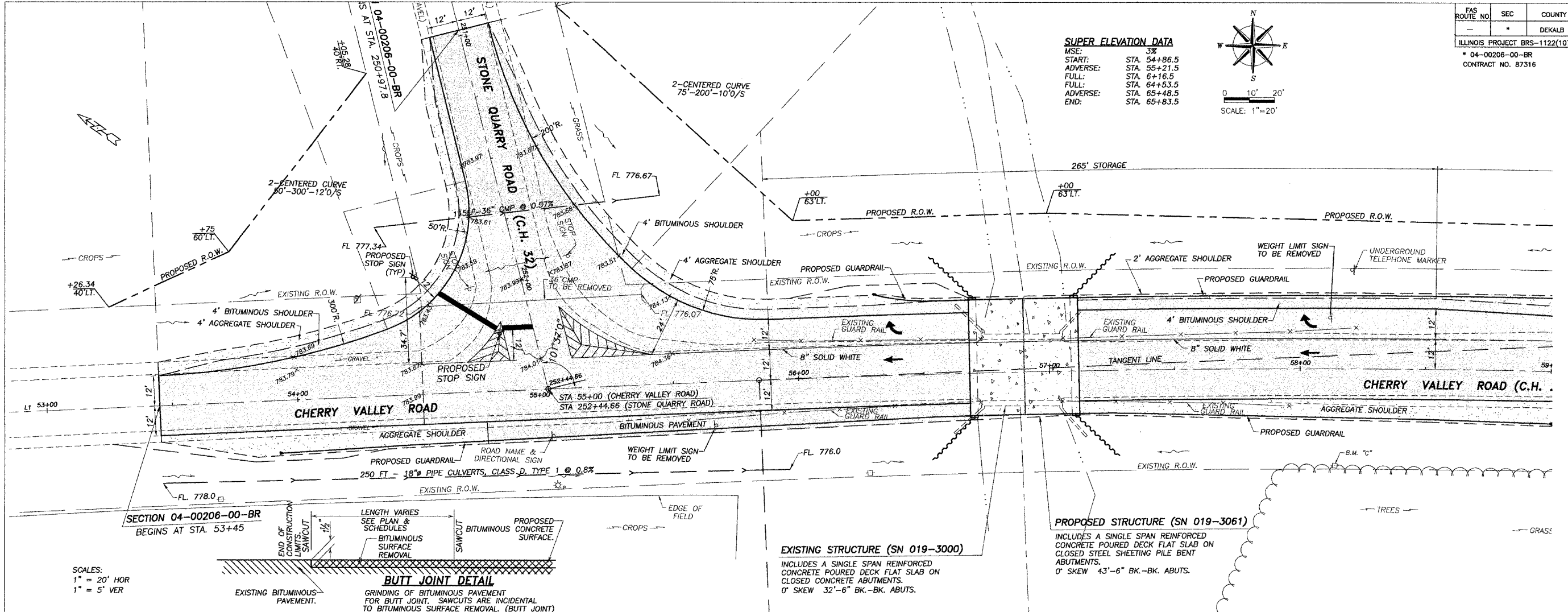


FAS ROUTE NO.	SEC	COUNTY	TOTAL SHEETS	SHEET NO.
04-00206-00-BR		DEKALB	21	4

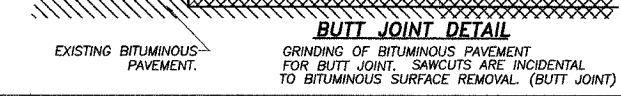
ILLINOIS PROJECT BRS-1122(107)
 * 04-00206-00-BR
 CONTRACT NO. 87316



SUPER ELEVATION DATA
 MSE: 3%
 START: STA. 54+86.5
 ADVERSE: STA. 55+21.5
 FULL: STA. 6+16.5
 FULL: STA. 64+53.5
 ADVERSE: STA. 65+48.5
 END: STA. 65+83.5

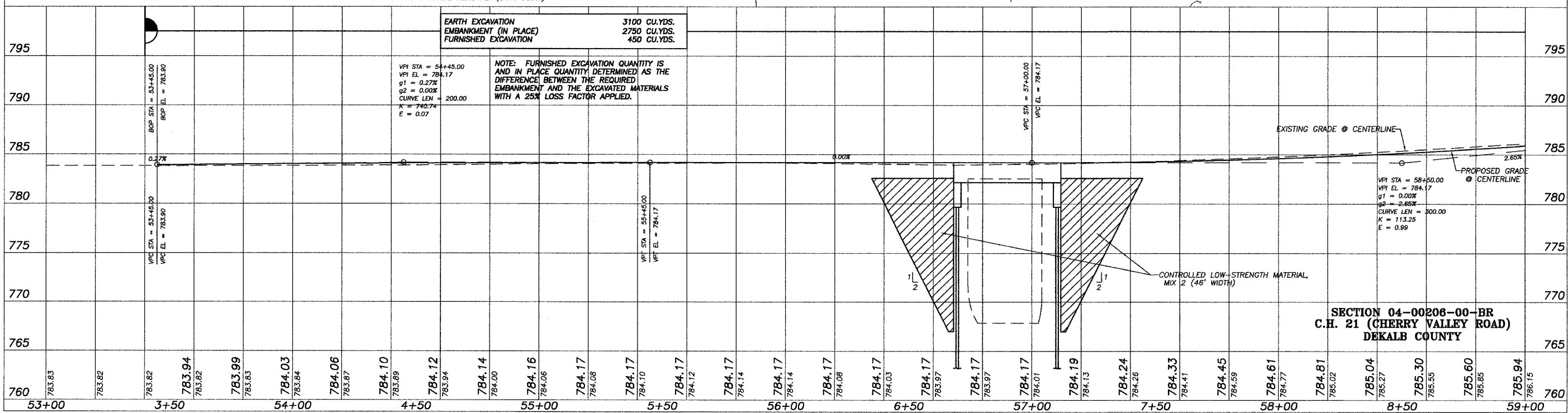


SCALES:
 1" = 20' HOR
 1" = 5' VER



EXISTING STRUCTURE (SN 019-3000)
 INCLUDES A SINGLE SPAN REINFORCED CONCRETE POURED DECK FLAT SLAB ON CLOSED CONCRETE ABUTMENTS.
 0° SKEW 32'-6" BK.-BK. ABUTS.

PROPOSED STRUCTURE (SN 019-3061)
 INCLUDES A SINGLE SPAN REINFORCED CONCRETE POURED DECK FLAT SLAB ON CLOSED STEEL SHEETING PILE BENT ABUTMENTS.
 0° SKEW 43'-6" BK.-BK. ABUTS.



DATE: _____

REVISION: _____

698 TIMBER CREEK ROAD - P.O. BOX 486 - DIXON, IL 61021 - 815-288-7281
 28 E. MARION - SUITE 3 - PRINCETON, IL 61356 - 815-879-4731
 1778 WEST STATE ST. - SYCAMORE, IL 60178 - 815-895-5008
 804 FREEPORT RD. - STERLING, IL 61081 - (815) 626-4428
 E-MAIL: info@wendlereng.com

WENDLER ENGINEERING SERVICES, INC.
 Structural & Civil Engineers - Land Surveying - Environmental Services
 Illinois Professional Design Firm No. 184-000848

1968 - 2007
39
 YEARS
 WE'RE STILL
 "Turning Ideas... Into Reality!"

© WENDLER ENGINEERING SERVICES, INC. 2007