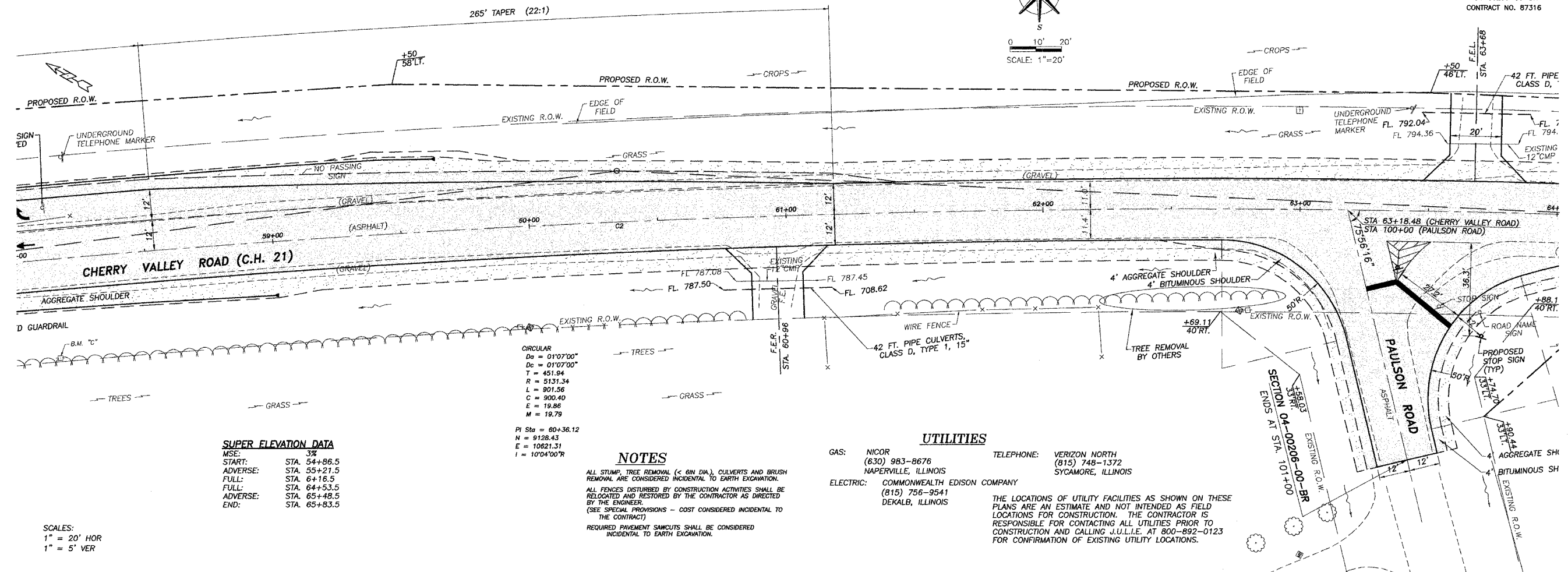
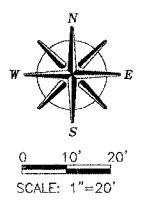


FAS ROUTE NO.	SEC.	COUNTY	TOTAL SHEETS	SHEET NO.
-	-	DEKALB	21	5

ILLINOIS PROJECT BRS-1122(107)
 * 04-00206-00-BR
 CONTRACT NO. 87316



SUPER ELEVATION DATA

MSE:	3%
START:	STA. 54+86.5
ADVERSE:	STA. 55+21.5
FULL:	STA. 64+16.5
FULL:	STA. 64+53.5
ADVERSE:	STA. 65+48.5
END:	STA. 65+83.5

CIRCULAR
 Dc = 01'07.00"
 Da = 01'07.00"
 T = 451.94
 R = 5131.34
 L = 901.56
 C = 900.40
 E = 19.86
 M = 19.79
 PI Sta = 60+36.12
 N = 9128.43
 E = 10621.31
 I = 10°04'00"R

NOTES

ALL STUMP, TREE REMOVAL (< 8IN DIA.), CULVERTS AND BRUSH REMOVAL ARE CONSIDERED INCIDENTAL TO EARTH EXCAVATION.
 ALL FENCES DISTURBED BY CONSTRUCTION ACTIVITIES SHALL BE RELOCATED AND RESTORED BY THE CONTRACTOR AS DIRECTED BY THE ENGINEER.
 (SEE SPECIAL PROVISIONS - COST CONSIDERED INCIDENTAL TO THE CONTRACT)
 REQUIRED PAVEMENT SAWCUTS SHALL BE CONSIDERED INCIDENTAL TO EARTH EXCAVATION.

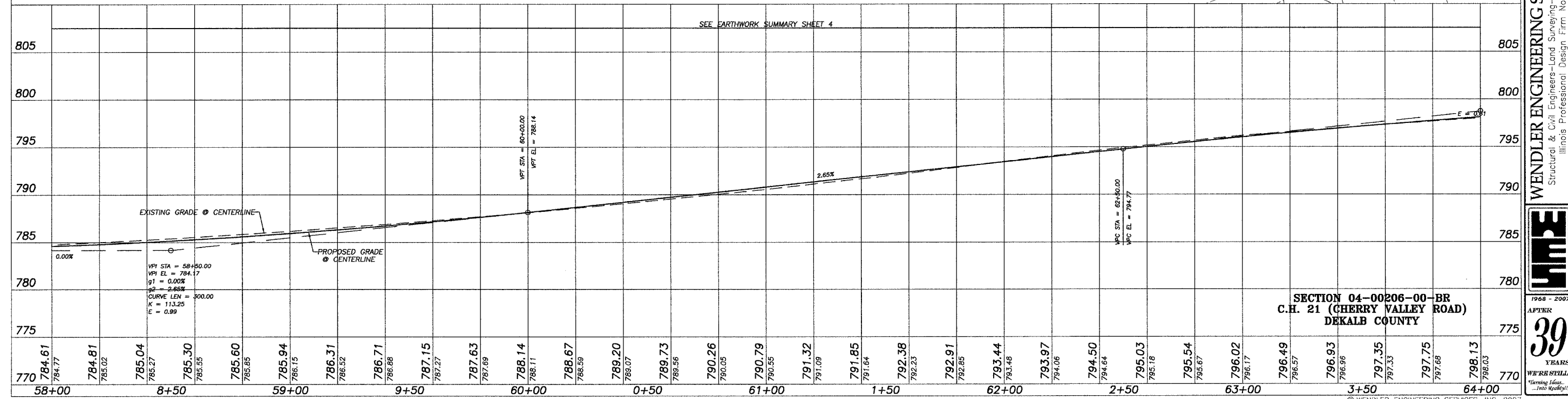
UTILITIES

GAS: NICOR (630) 983-8676 NAPERVILLE, ILLINOIS
ELECTRIC: COMMONWEALTH EDISON COMPANY (815) 756-9541 DEKALB, ILLINOIS
TELEPHONE: VERIZON NORTH (815) 748-1372 SYCAMORE, ILLINOIS

THE LOCATIONS OF UTILITY FACILITIES AS SHOWN ON THESE PLANS ARE AN ESTIMATE AND NOT INTENDED AS FIELD LOCATIONS FOR CONSTRUCTION. THE CONTRACTOR IS RESPONSIBLE FOR CONTACTING ALL UTILITIES PRIOR TO CONSTRUCTION AND CALLING J.U.L.I.E. AT 800-892-0123 FOR CONFIRMATION OF EXISTING UTILITY LOCATIONS.

SCALES:
 1" = 20' HOR
 1" = 5' VER

SEE EARTHWORK SUMMARY SHEET 4



SECTION 04-00206-00-BR
C.H. 21 (CHERRY VALLEY ROAD)
DEKALB COUNTY

695 TIMBER CREEK ROAD - P.O. BOX 488 - DIXON, IL 61021 - 815-288-2261
 28 E. MARION - SUITE 3 - PRINCETON, IL 61356 - 815-879-4731
 1778 WEST STATE ST. - STAMFORD, IL 60176 - 815-885-5006
 804 FREELPORT RD. - STERLING, IL 61081 - (815) 626-4428
 E-MAIL: info@wendlereng.com

WENDLER ENGINEERING SERVICES, INC.
 Structural & Civil Engineers-Land Surveying-Environmental Services
 Illinois Professional Design Firm No. 184-000848

1968 - 2007
WME
 39 YEARS
 WE'RE STILL
 ...Into the Future!

© WENDLER ENGINEERING SERVICES, INC. 2007