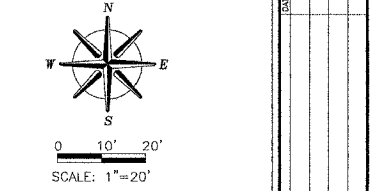
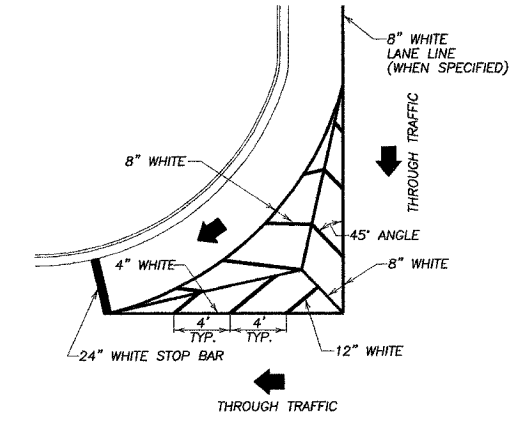
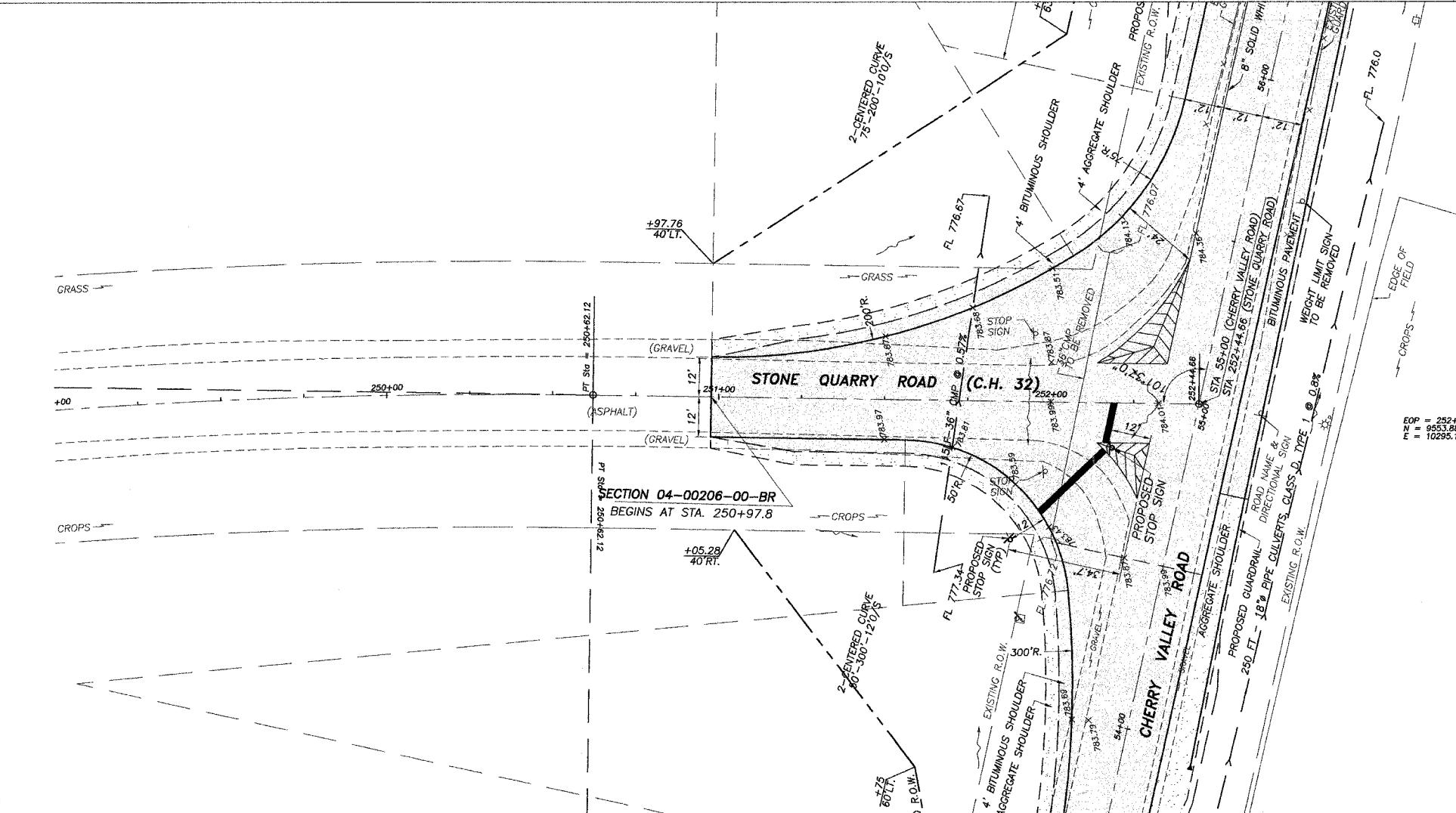


| FAS ROUTE NO. | SEC | COUNTY | TOTAL SHEETS | SHEET NO. |
|---------------|-----|--------|--------------|-----------|
| — | * | DEKALB | 21 | 7 |

ILLINOIS PROJECT BRS-1122(107)
 * 04-00206-00-BR
 CONTRACT NO. 87316



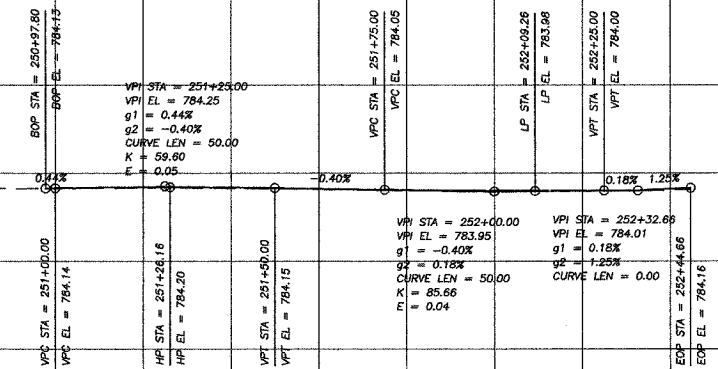
EXISTING STRUCTURE (SW)
 INCLUDES A SINGLE SPAN REINFORCED CONCRETE PAVED DECK, FLAT SLOPE, CLOSED CONCRETE ABUTMENTS, 0° SKEW 32'-6" BK.-BK. ABUTS.



TYPICAL MARKING FOR PAINTED ISLANDS

| Station | 795 | 790 | 785 | 780 | 775 | 770 | 765 | 760 |
|---------|-----|-----|-----|-----|-----|-----|-----|-----|
| 249+00 | | | | | | | | |
| 9+50 | | | | | | | | |
| 250+00 | | | | | | | | |
| 0+50 | | | | | | | | |
| 251+00 | | | | | | | | |
| 1+50 | | | | | | | | |
| 252+00 | | | | | | | | |
| 2+50 | | | | | | | | |
| 253+00 | | | | | | | | |
| 3+50 | | | | | | | | |
| 254+00 | | | | | | | | |
| 4+50 | | | | | | | | |
| 255+00 | | | | | | | | |

EARTH EXCAVATION 350 CU.YDS.
 EMBANKMENT (IN PLACE) 780 CU.YDS.
 FURNISHED EXCAVATION 500 CU.YDS.



SECTION 04-00206-00
 C.H. 32 (STONE QUARRY ROAD)
 DEKALB COUNTY

688 TIMBER CREEK ROAD - P.O. BOX 486 - DIXON, IL 61021 - 815-288-2261
 28 E. WARRON - SUITE 3 - PRINCETON, IL 61356 - 815-879-4731
 1770 WEST STATE ST. - STICKLUM, IL 60778 - 815-885-3006
 804 PREPPER ROAD - STERLING, IL 61081 - (815) 626-4425
 E-MAIL: info@wendlerengineering.com

WENDLER ENGINEERING SERVICES, INC.
 Structural & Civil Engineers—Land Surveying—Environmental Services
 Illinois Professional Design Firm No. 184-000848



1968 - 2007
 AFTER
39
 YEARS
 WE'RE STILL
 Warning Ideas... Into Reality!!!