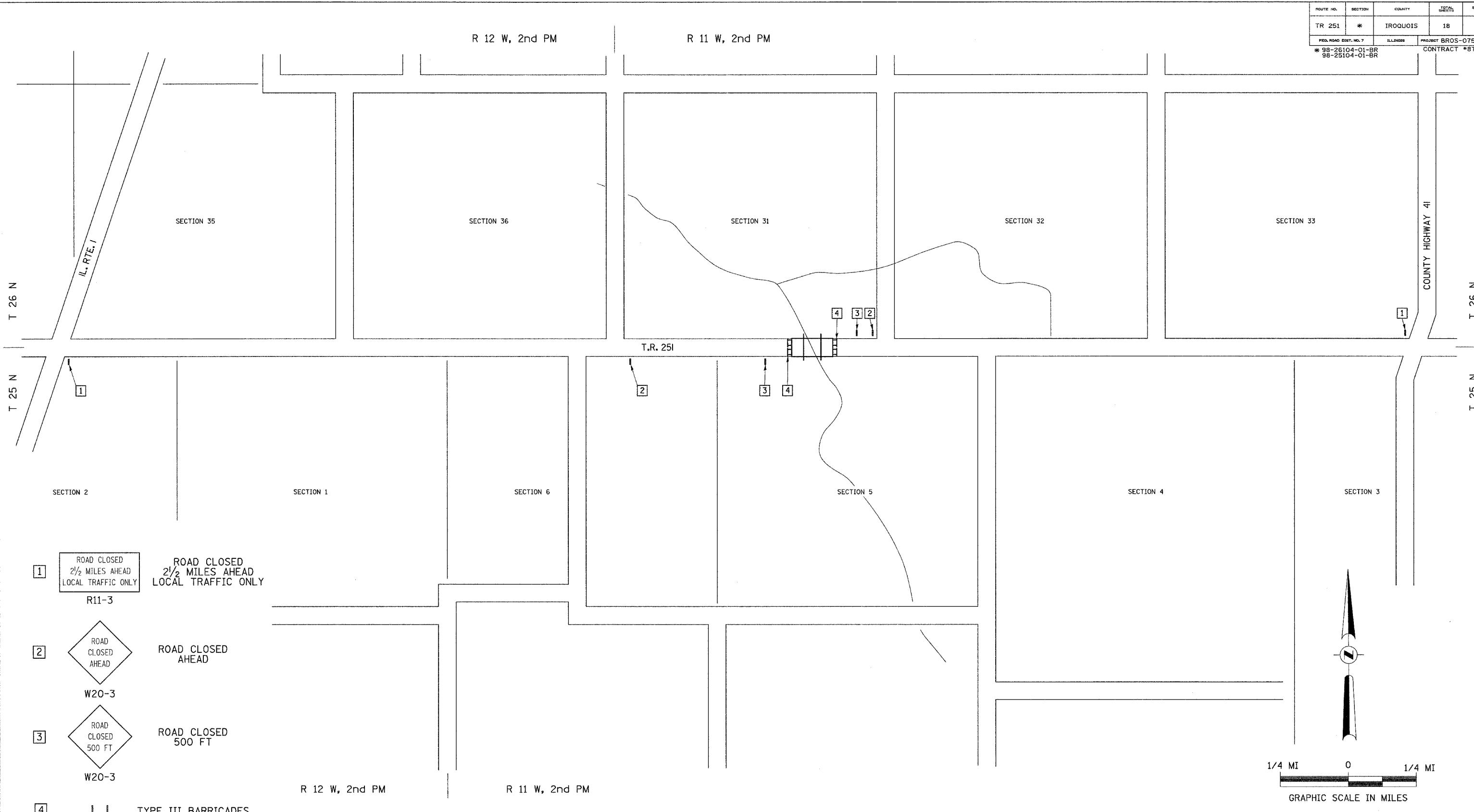


ROUTE NO.	SECTION	COUNTY	TOTAL SHEETS	SHEET NO.
TR 251	*	IROQUOIS	18	3
FED. ROAD DIST. NO. 7		ILLINOIS	PROJECT BROS-075(130)	
* 98-26104-01-BR 98-25104-01-BR		CONTRACT #87336		

R 12 W, 2nd PM

R 11 W, 2nd PM



1 ROAD CLOSED  
2 1/2 MILES AHEAD  
LOCAL TRAFFIC ONLY  
ROAD CLOSED  
2 1/2 MILES AHEAD  
LOCAL TRAFFIC ONLY

R11-3

2 ROAD CLOSED  
AHEAD  
W20-3

ROAD CLOSED  
AHEAD

W20-3

3 ROAD CLOSED  
500 FT  
W20-3

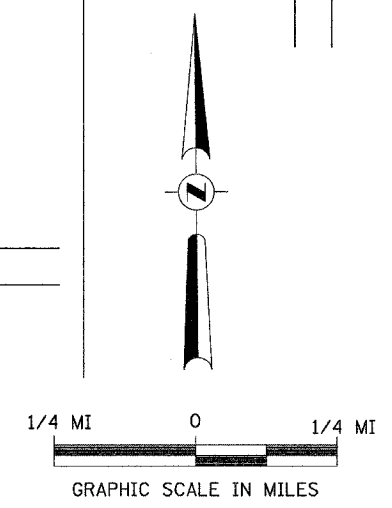
ROAD CLOSED  
500 FT

W20-3

4 TYPE III BARRICADES

R 12 W, 2nd PM

R 11 W, 2nd PM



SEE STANDARD BLR 21  
AND SPECIAL PROVISIONS

TRAFFIC CONTROL PLAN  
TOWNSHIP ROAD 251 OVER COON CREEK  
SECTION 98-26104-01-BR /98-25104-01-BR  
IROQUOIS COUNTY  
STATION 59+90.00