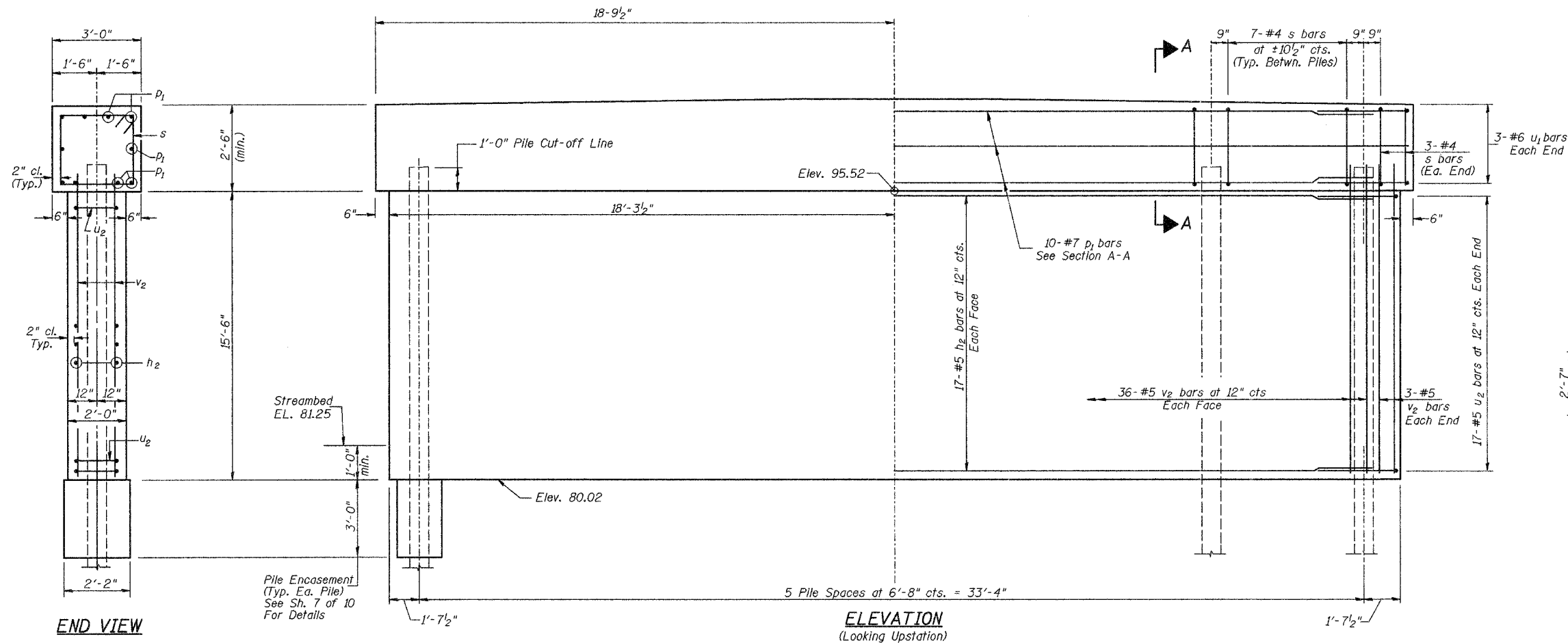
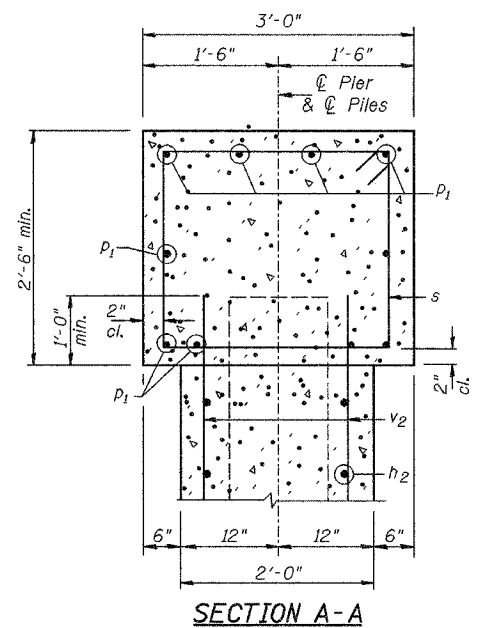
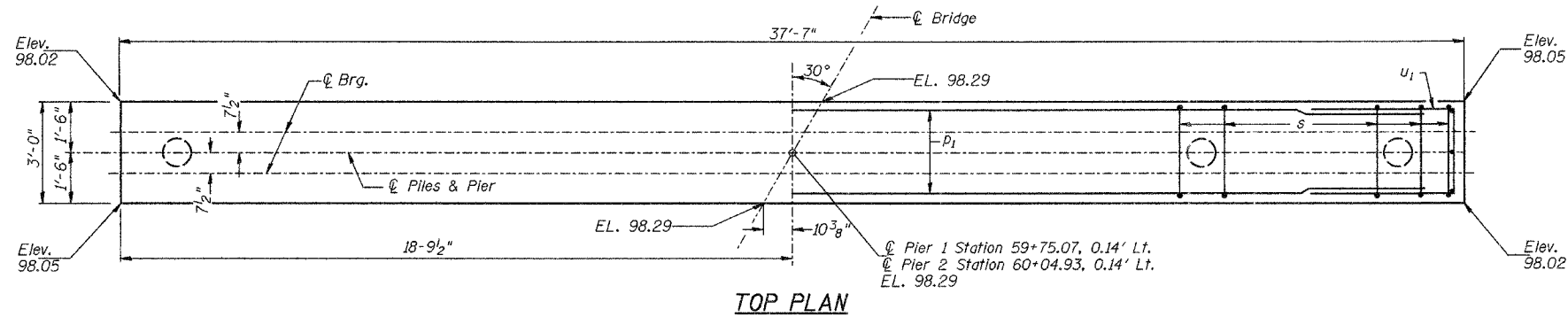
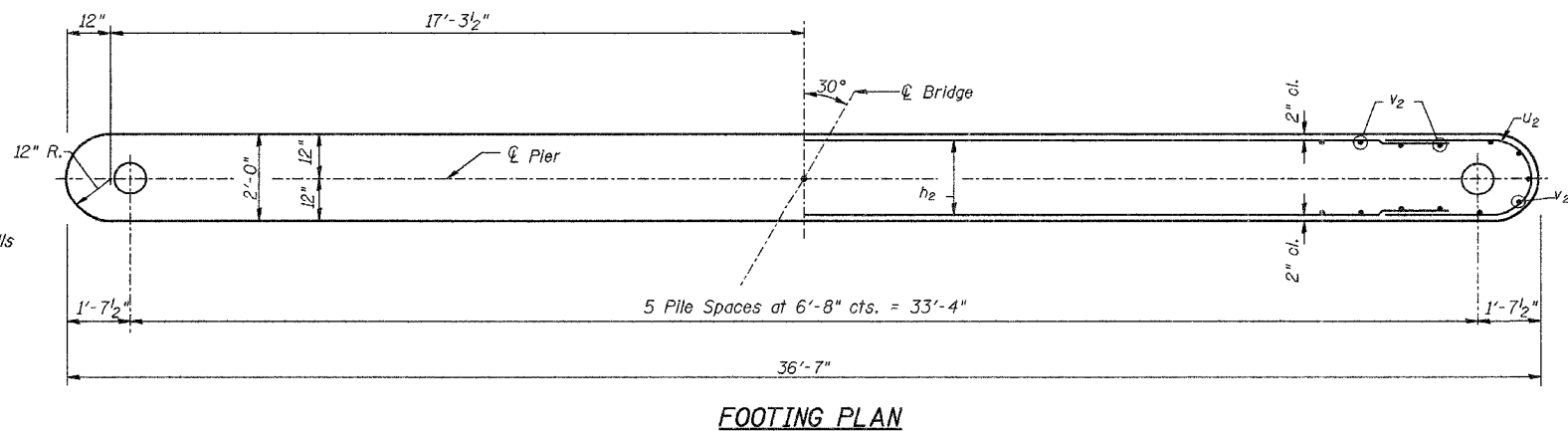


**NOTES:**  
All edges shall have standard  $\frac{3}{4}$ " chamfer.



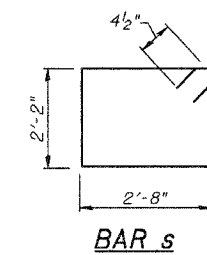
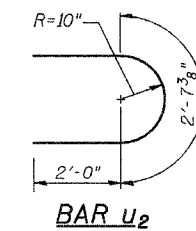
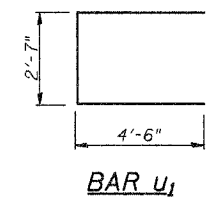
**END VIEW**



**TWO PIERS  
BILL OF MATERIAL**

BAR NO.	SIZE	LENGTH	SHAPE
$h_2$	#5	34'-3"	—
$p_1$	#7	37'-4"	—
$s$	#4	10'-5"	□
$u_1$	#6	11'-7"	⊔
$u_2$	#5	6'-8"	⊔
$v_2$	#5	16'-4"	—
Concrete Structures			CU YD 99.2
① Reinforcement Bars			POUND 7,870
Structure Excavation			CU YD 60
Furnishing Metal Shell Piles 12"			FOOT 759
Driving Piles			FOOT 759
Test Pile Metal Shells			EACH 1
Concrete Encasement			CU YD 5.2
① Underwater Structure Excavation Protection-Location 1			EACH 1
① Underwater Structure Excavation Protection-Location 2			EACH 1

① See Special Provisions



**PILE DATA**  
Type & Size: Metal Shell-12"  $\phi$  x 0.25" walls  
Nominal Required Bearing: 330 kips  
Allowable Resistance Available: 110 kips  
Est. Length: 69' Each Pier  
No. Req'd.: 12 (Includes 1 Test Pile at Pier #1)

**PIERS**  
T.R. 251 OVER COON CREEK  
SECTION 98-26104-01-BR / 98-25104-01-BR  
IROQUOIS COUNTY  
STATION 59+90.00