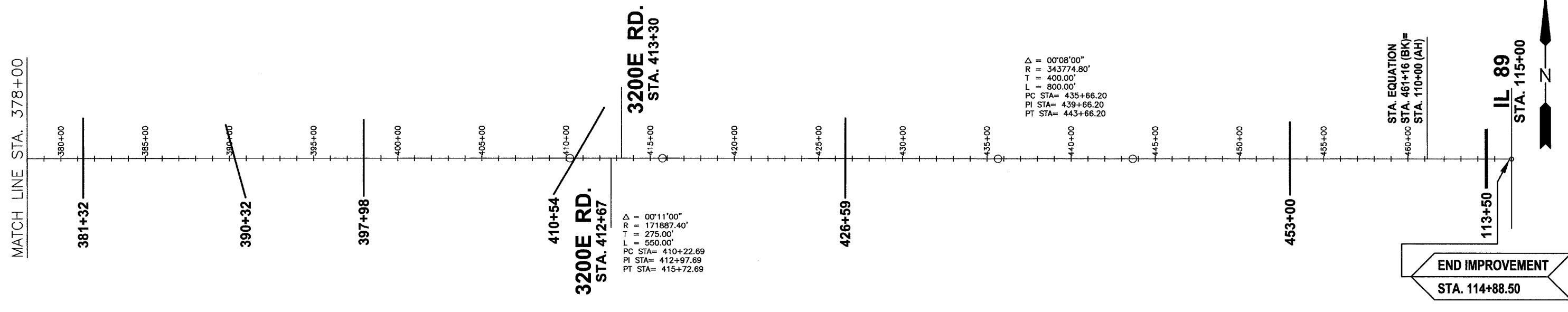


LOCATION	DESCRIPTION
STA. 309+81	EXISTING CULVERT 18" CMP
STA. 319+64	EXISTING CULVERT CORRUGATED STEEL ARCH 22" SPAN X 13" RISE
STA. 326+12	EXISTING CULVERT 18" CMP
STA. 342+64	EXISTING CULVERT 18" CMP
STA. 361+55	EXISTING CULVERT 18" RCCP
STA. 364+93	EXISTING CULVERT CORRUGATED STEEL ARCH 43" SPAN X 27" RISE
STA. 381+32	EXISTING CULVERT 12" CMP
STA. 390+32	EXISTING CULVERT 4' X 4' REINFORCED CONCRETE BOX CULVERT

LOCATION	DESCRIPTION
STA. 397+98	EXISTING CULVERT 24" CORRUGATED STEEL ARCH DIAMETER EQUIVALENT 24" W/ METAL END SECTIONS
STA. 410+54 S.N. 006-5020 (EXIST.) S.N. 006-5032 (PROP.)	PROPOSED 2-PIPE CULVERTS, EQUIVALENT ROUND-SIZE 120"
STA. 426+59	EXISTING CULVERT 18" CMP
STA. 453+00	EXISTING CULVERT CORRUGATED STEEL ARCH 22" SPAN X 13" RISE
STA. 113+50	PROPOSED RCCP-ELLIPTICAL, EQUIVALENT ROUND-SIZE 18" W/ END SECTIONS



DRAWN BY: L.A.G. CAD./DWG: CULVERTS-EXH DATE: 04/07 CHECKED BY: D.J.D. DATE: 04/07

DRAWN BY: L.A.G.  
CHECKED BY: D.J.D.

REVISIONS	
DATE	BY

**CHAMLIN & ASSOCIATES**  
PERU MORRIS  
ILLINOIS

**C.H. 33 (ANGLING ROAD)**  
2007  
SECTION 05-00198-00-RS

**PROJECT SCHEMATIC**

SCALE: NONE	SHEET 14
FILE NO.: 6813.00Y-1	OF 33