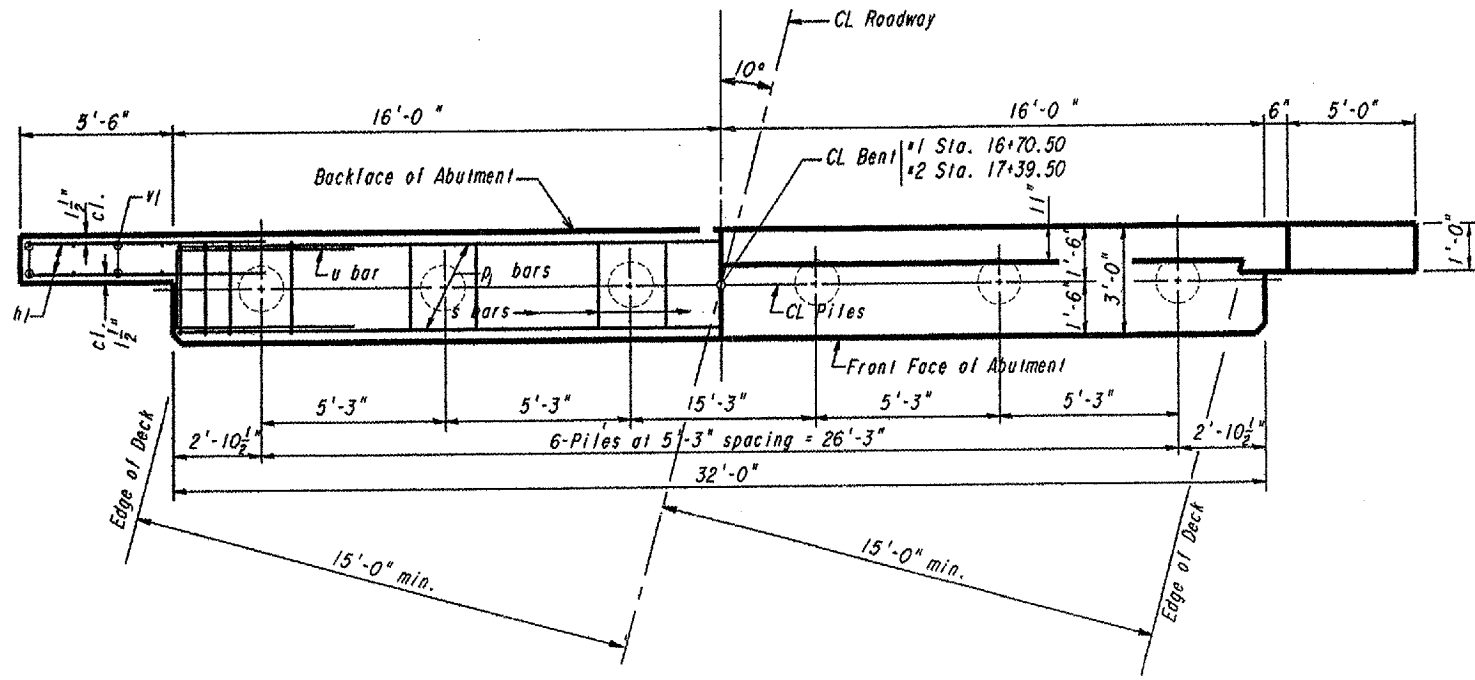
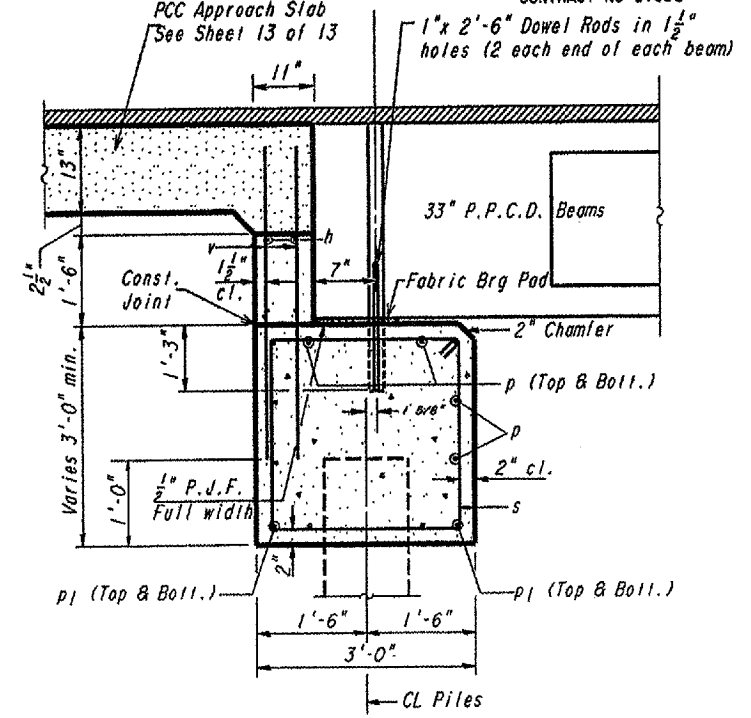


ROUTE NUMBER	SECTION	COUNTY	TOTAL SHEETS	SHEET NO.
CH 16	08-00647-00-BR	LASALLE	13	6
FED. ROAD DIST. NO.7		ILLINOIS PROJECT BROS-099(35)		

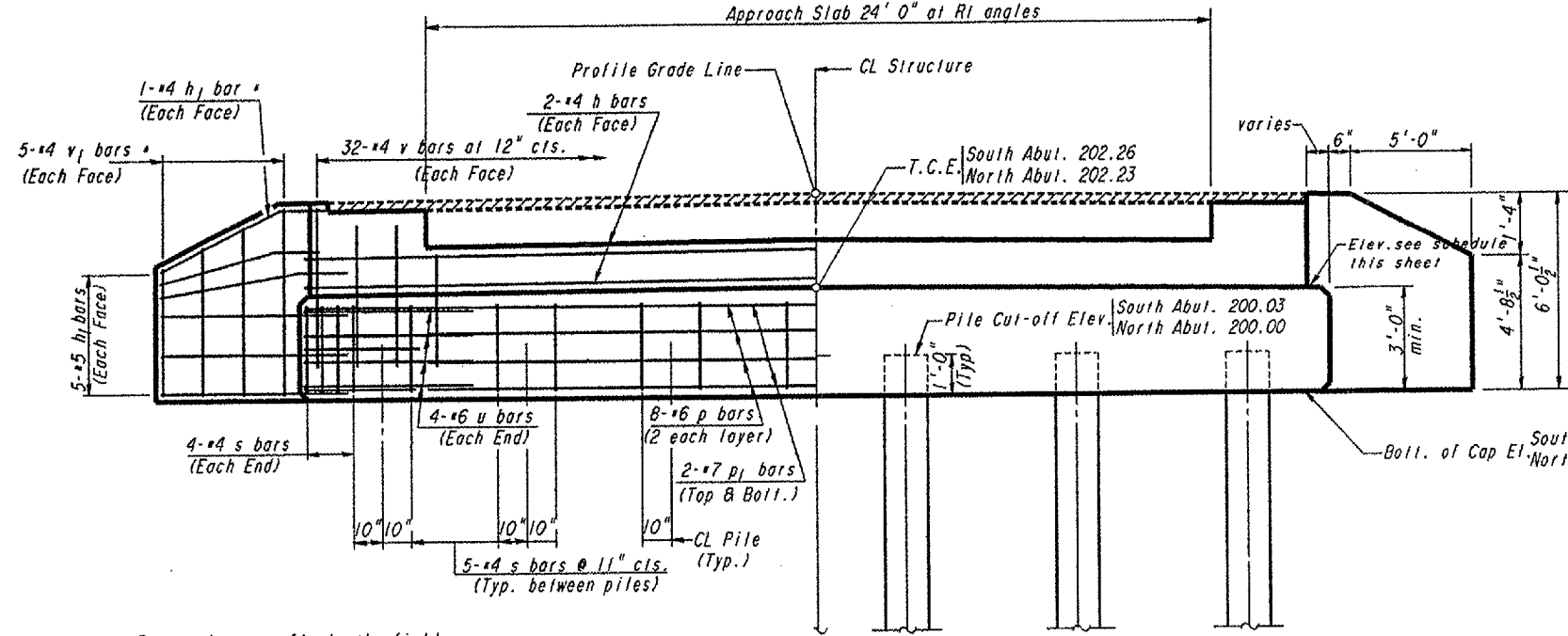
CONTRACT NO B7350



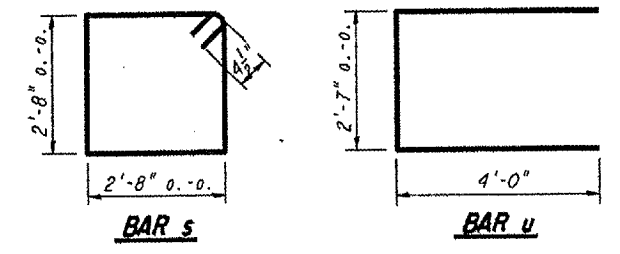
PLAN



SECTION THRU ABUTMENT
(At Right Angles)



ELEVATION



BILL OF MATERIAL FOR ONE ABUTMENT

Bar	No.	Size	Length	Shape
h	4	#4	31'-6"	—
h1	24	#5	6'-6"	—
p	8	#6	31'-8"	—
p1	4	#7	31'-8"	—
s	33	#4	11'-5"	□
u	8	#6	10'-7"	⊔
v	64	#4	4'-0"	—
v1	20	#4	5'-5"	—
Concrete Structures		15.0 Cu. Yd.		
Reinf Bars Epoxy Ct		1510 Pounds		

DESIGN STRESSES

$f'_c = 3,500$ psi
 $f_y = 60,000$ psi

PILE DATA (2-ABUTS.)

Type and Size 12" Metal Shell (0.25")
Nominal Required Bearing 270 kips
Allowable Resistance Avail. 90 kips
Estimated Length 44 Feet
Number Required 12 Includes 2 Test Piles

TOP OF CAP ELEVATIONS

LOCATION	15.23' LI*	Centerline	15.23' RI*
South Abut Sta. 16+70.50	202.03	202.26	202.03
North Abut Sta. 17+39.50	202.00	202.23	202.00

* Measured along skew

ABUTMENT DETAIL