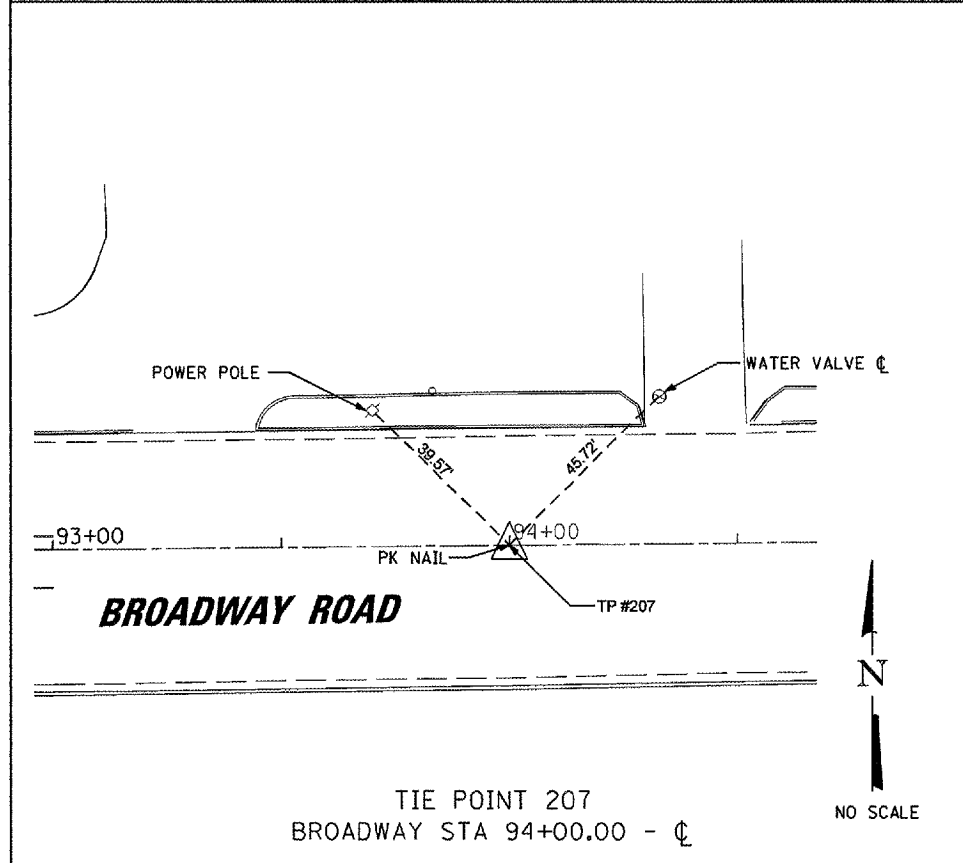
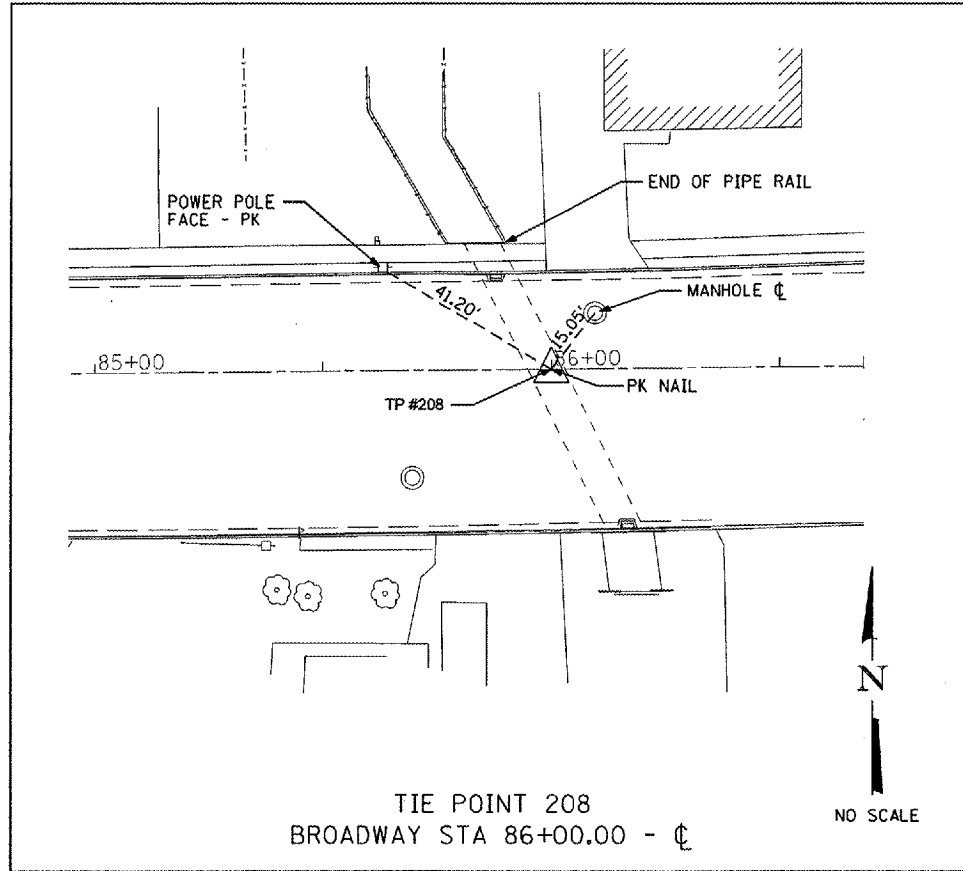
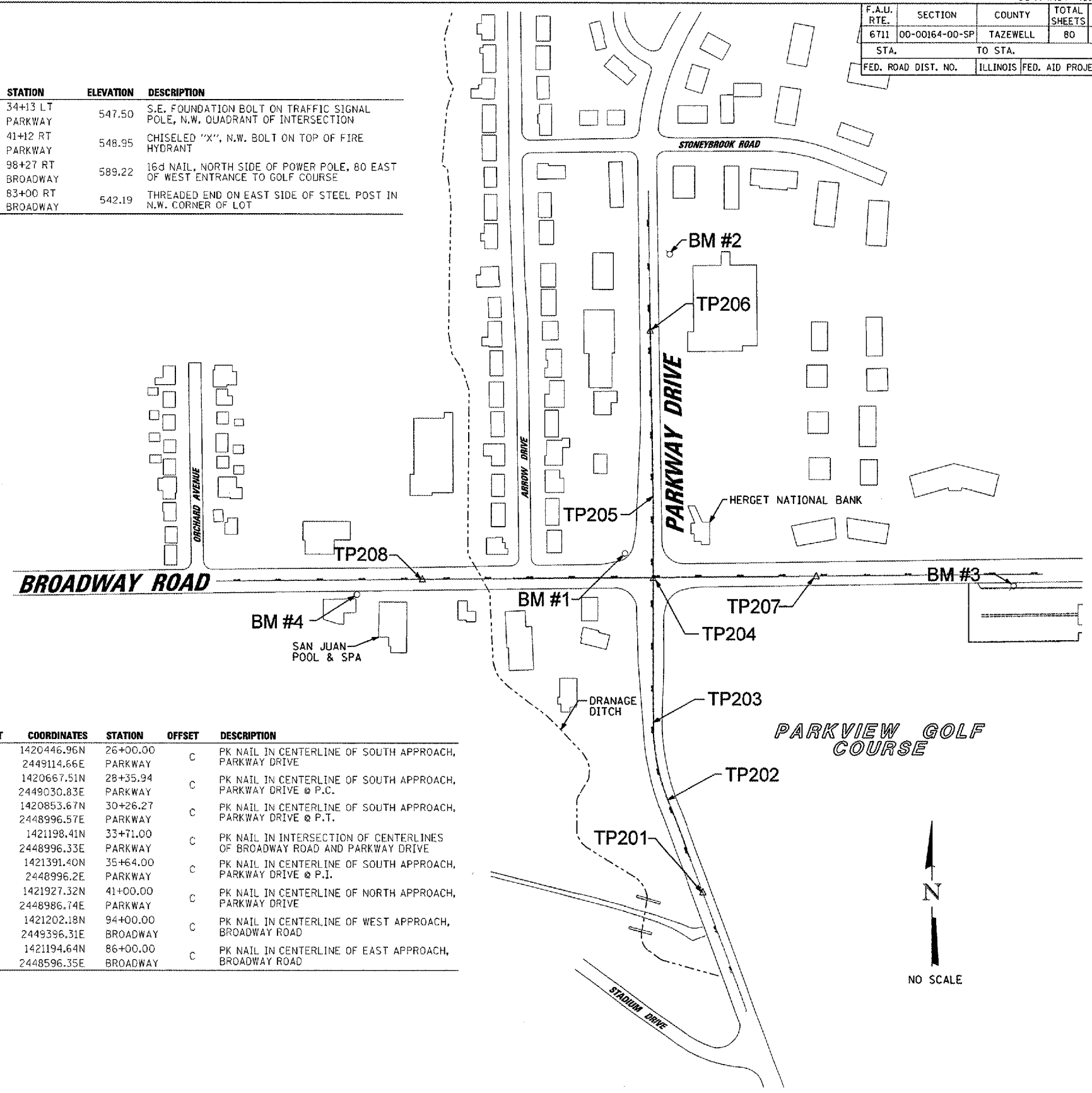


| F.A.U. RTE. | SECTION | COUNTY | TOTAL SHEETS | SHEET NO. |
|---------------------|----------------|---------------------------|--------------|-----------|
| 6711 | 00-00164-00-SP | TAZEWELL | 80 | 13 |
| STA. | | TO STA. | | |
| FED. ROAD DIST. NO. | | ILLINOIS FED. AID PROJECT | | |



| BENCHMARK | STATION | ELEVATION | DESCRIPTION |
|-----------|-------------------|-----------|---|
| BM #1 | 34+13 LT PARKWAY | 547.50 | S.E. FOUNDATION BOLT ON TRAFFIC SIGNAL POLE, N.W. QUADRANT OF INTERSECTION |
| BM #2 | 41+12 RT PARKWAY | 548.95 | CHISELED "X", N.W. BOLT ON TOP OF FIRE HYDRANT |
| BM #3 | 98+27 RT BROADWAY | 589.22 | 16d NAIL, NORTH SIDE OF POWER POLE, 80 EAST OF WEST ENTRANCE TO GOLF COURSE |
| BM #4 | 83+00 RT BROADWAY | 542.19 | THREADED END ON EAST SIDE OF STEEL POST IN N.W. CORNER OF LOT |

| TIE POINT | COORDINATES | STATION | OFFSET | DESCRIPTION |
|-----------|----------------------------|----------------------|--------|---|
| 201 | 1420446.96N 2449114.66E | 26+00.00 PARKWAY | C | PK NAIL IN CENTERLINE OF SOUTH APPROACH, PARKWAY DRIVE |
| 202 | 1420667.51N 2449030.83E | 28+35.94 PARKWAY | C | PK NAIL IN CENTERLINE OF SOUTH APPROACH, PARKWAY DRIVE @ P.C. |
| 203 | 1420853.67N 2448996.57E | 30+26.27 PARKWAY | C | PK NAIL IN CENTERLINE OF SOUTH APPROACH, PARKWAY DRIVE @ P.T. |
| 204 | 1421198.41N 2448996.33E | 33+71.00 PARKWAY | C | PK NAIL IN INTERSECTION OF CENTERLINES OF BROADWAY ROAD AND PARKWAY DRIVE |
| 205 | 1421391.40N 2448996.2E | 35+64.00 PARKWAY | C | PK NAIL IN CENTERLINE OF SOUTH APPROACH, PARKWAY DRIVE @ P.I. |
| 206 | 1421927.32N 2448986.74E | 41+00.00 PARKWAY | C | PK NAIL IN CENTERLINE OF NORTH APPROACH, PARKWAY DRIVE |
| 207 | 1421202.18N 2449396.31E | 94+00.00 BROADWAY | C | PK NAIL IN CENTERLINE OF WEST APPROACH, BROADWAY ROAD |
| 208 | 1421194.64N 2448596.35E | 86+00.00 BROADWAY | C | PK NAIL IN CENTERLINE OF EAST APPROACH, BROADWAY ROAD |



MAURER-STUTZ, INC.