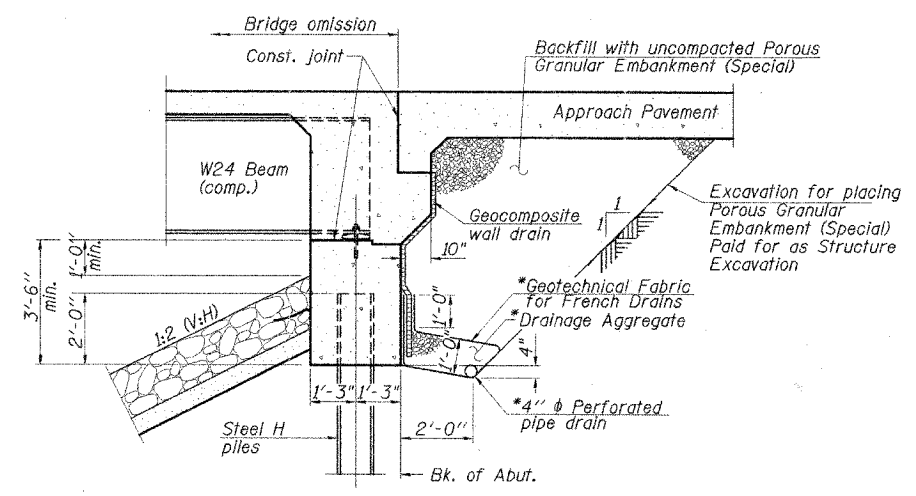


F.A.U. RTE.	SECTION #	COUNTY	TOTAL SHEETS	SHEET NO.
05-00444-00-BR		SANGAMON	33	8
STA. N/A	TO STA. N/A			
FED. ROAD DIST. NO. ILLINOIS FED. AID PROJECT				
*CITY OF SPRINGFIELD SHEET 2 OF 24 SHEETS				

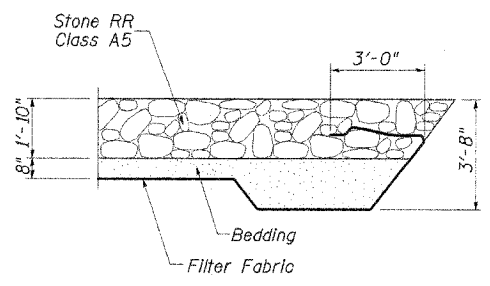
GENERAL NOTES

- Fasteners shall be AASHTO M164 Type 1, mechanically galvanized bolts in painted areas and M164 Type 3 in unpainted areas. Bolts 7/8 in. ϕ , holes 5/16 in. ϕ , unless otherwise noted.
- Calculated weight of Structural Steel = 168,600 pounds
- All structural steel shall be AASHTO M 270 Grade 50W.
- No field welding is permitted except as specified in the contract documents.
- Reinforcement bars shall conform to the requirements of ASTM A 706 Gr 60 (IL Modified). See Special Provisions.
- Reinforcement bars designated (E) shall be epoxy coated.
- Bearing seat surfaces shall be constructed or adjusted to their designated elevations within a tolerance of 1/8 inch (0.01 ft.). Adjustment shall be made either by grinding the surface or by shimming the bearings.
- Structural steel shall only be painted for a distance equal to the depth of embedment into the concrete cap plus 3 inches. Those areas shall be primed in the shop with a Department approved zinc rich primer. No field painting shall be required. All structural steel shall be cleaned as specified in the Special Provision for "Surface Preparation and Painting Requirements for Weathering Steel".
- Layout of slope protection system may be varied in the field to suit ground conditions as directed by the Engineer.
- The Contractor shall drive test piles to 110% of the nominal required bearing specified in production locations at substructures specified or approved by the Engineer before ordering the remainder of piles.
- If the Contractor chooses to alter the temporary cantilevered sheet piling design requirements shown on the plans, a design submittal including plan details and calculations will be required for review and acceptance by the Engineer.

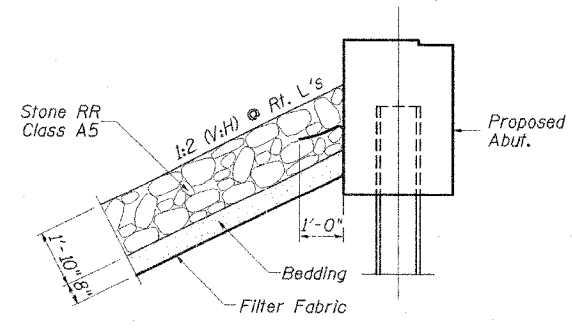


*Included in the cost of Pipe Underdrains for Structures 4"
All drainage system components shall extend to 2'-0" from the end of each wingwall except an outlet pipe shall extend until intersecting with the side slopes. The pipes shall drain into concrete headwalls. (See Article 601.05 of the Standard Specifications and Highway Standard 601101)

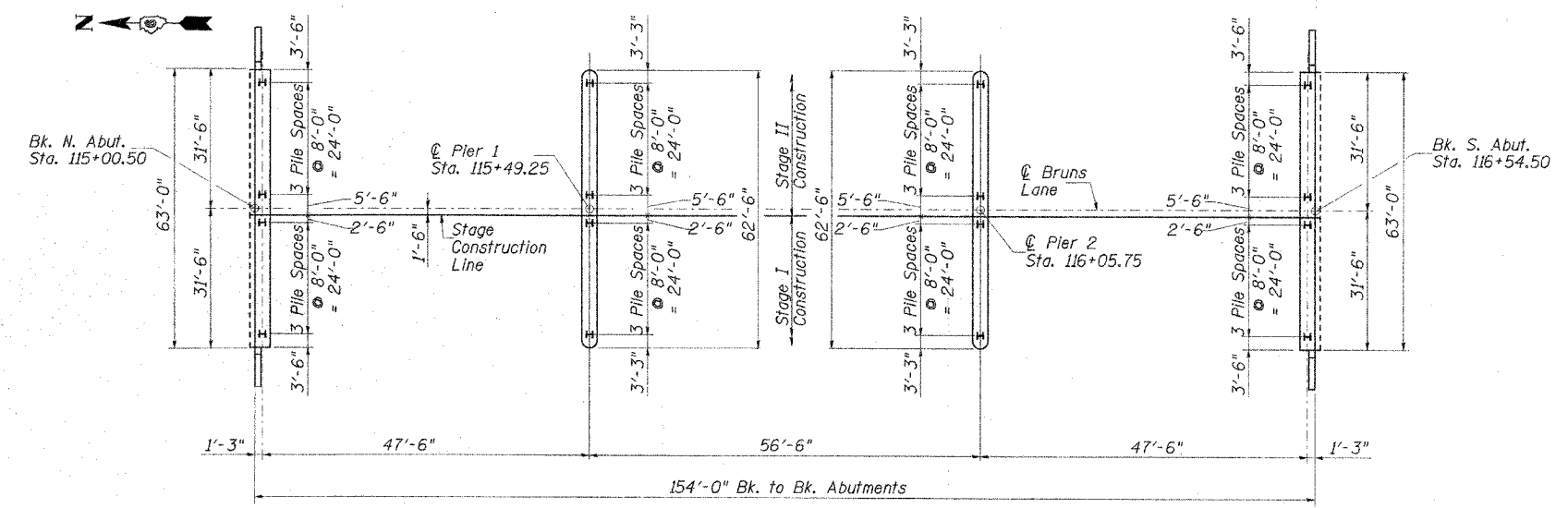
SECTION THRU INTEGRAL ABUTMENT



SECTION A-A
(See Sheet 1 of 24 for location)



SECTION THRU RIPRAP SLOPE



FOOTING LAYOUT

TOTAL BILL OF MATERIAL

ITEM	UNIT	SUPER	SUB	TOTAL
Porous Granular Embankment, Special	Cu. Yd.		226	226
Stone Riprap, Class A5	Sq. Yd.		1473	1473
Filter Fabric	Sq. Yd.		1473	1473
Removal of Existing Structures	L. Sum			1
Structure Excavation	Cu. Yd.		488	488
Floor Drains	Each	8		8
Concrete Structures	Cu. Yd.		218.6	218.6
Concrete Superstructure	Cu. Yd.	331.7		331.7
Bridge Deck Grooving	Sq. Yd.	837		837
Concrete Encasement	Cu. Yd.		11.2	11.2
Protective Coat	Sq. Yd.	1158		1158
Furnishing and Erecting Structural Steel	L. Sum	1		1
Stud Shear Connectors	Each	4830		4830
Reinforcement Bars, Epoxy Coated	Pound	70,290	22,750	93,040
Bar Splicers	Each	587	108	695
Aluminum Railing, Type L	Foot	304		304
Steel Railing (Temporary)	Foot	146		146
Furnishing Steel Piles HP 12x53	Foot		701	701
Furnishing Steel Piles HP 12x63	Foot		672	672
Driving Piles	Foot		1373	1373
Test Pile Steel HP 12x53	Each		2	2
Test Pile Steel HP 12x63	Each		2	2
Temporary Sheet Piling	Sq. Ft.		332	332
Name Plates	Each	1		1
Geocomposite Wall Drain	Sq. Yd.		91	91
Pipe Underdrains for Structures 4"	Foot		186	186
Underwater Structure Excavation Protection - Location 1 (Pier 1)	Each		1	1
Underwater Structure Excavation Protection - Location 2 (Pier 2)	Each		1	1
Bridge Approach Pavement	Sq. Yd.			348

REVISIONS	
NAME	DATE

CITY OF SPRINGFIELD, ILLINOIS
NOTES AND BILL OF MATERIAL
 FAU 8006-BRUNS LANE OVER SPRING CREEK
 SECTION 05-00444-00-BR
 SANGAMON COUNTY
 STATION 115+77.50 S.N. 084-6017
 SCALE: NONE DRAWN BY: GLD
 DATE: 6/19/07 CHECKED BY: WK

