

ROUTE NO.	SECTION	COUNTY	TOTAL SHEETS	SHEET NO.
C.H. 22	93-00085-00-BR	HANCOCK	11	1
F.H.W.A. REG. NO. 4		ILLINOIS	PROJ. NO.	

**STATE OF ILLINOIS
DEPARTMENT OF TRANSPORTATION
DIVISION OF HIGHWAYS**

**PLANS FOR PROPOSED
HIGHWAY BRIDGE PROGRAM**

C. H. ROUTE 22
SECTION 93-00085-00-BR
HANCOCK COUNTY
PROJECT NO. BROS-067 (76)
JOB NO. C-96-215-01

INDEX OF SHEETS

SHEET NO.	TITLE
1.	COVER SHEET
2.	SUMMARY OF QUANTITIES, GENERAL NOTES, TYPICAL SECTIONS
3.	PLAN & PROFILE
4. - 6.	ROADWAY CROSS SECTIONS
7.	GENERAL PLAN & ELEVATION
8. - 10.	FOUNDATION, WING DESIGN & QUANTITIES
11.	EROSION CONTROL PLAN

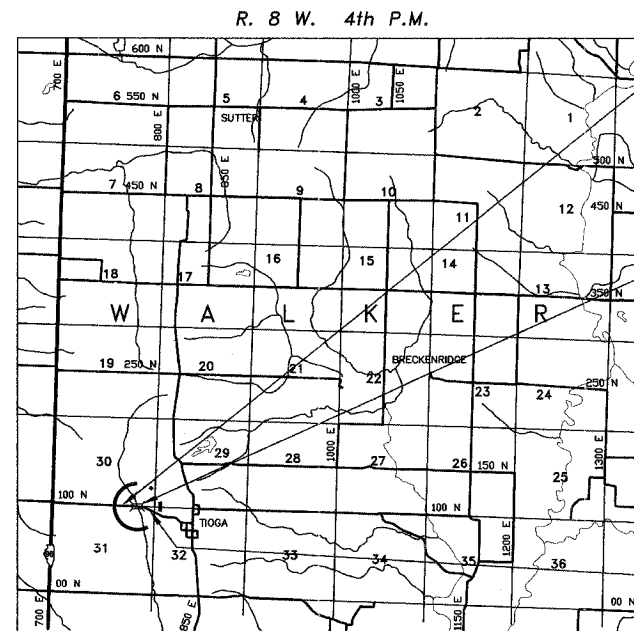
LIST OF STANDARDS

280001-03
515001-02
542301-01
630001-07
630301-04
702001-06
BLR 21-6

UTILITIES

NAME	ADDRESS
NICOR (N.I. GAS)	(800) 252-0883
AMEREN (C.I.P.S.)	(217) 357-3239
ADAMS TELEPHONE	(217) 696-4411

TOLL FREE JOINT UTILITY LOCATING
INFORMATION FOR EXCAVATORS (J.U.L.I.E.)
TELEPHONE NUMBER 1-800-892-0123



LOCATION MAP



NET LENGTH OF SECTION = 1488.92 FEET = 0.282 MILES

COLLECTOR
ADT = 250
DESIGN SPEED: 40 MPH

IMPROVEMENT BEGINS
STA. 44+00

PROPOSED STRUCTURE: NO. 034-3221
3-SIDED PRC STRUCTURE 32' x 12';
102'-8" LONG ON A SLAB FOOTING,
WINGWALLS, STEEL RAILING,
TYPE S-1, 15' R.H. SKEW.
STA. 50+04

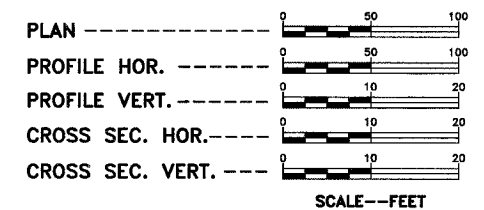
EXISTING STRUCTURE: NO. 034-3220
SINGLE SPAN STEEL I-BEAM WITH R.C.
DECK ON CLOSED TIMBER ABUTMENTS.
27' BK. TO BK. OF ABUTMENTS
22' O. TO O. OF DECK

IMPROVEMENT ENDS
STA. 58+88.92

THESE PLANS WERE PREPARED
BY ME OR BY A FULL-TIME MEMBER
OF MY STAFF WORKING UNDER
MY PERSONAL SUPERVISION.

PAUL E. SLY
COUNTY ENGINEER
ILLINOIS PROFESSIONAL NO. 062-043309
EXPIRES 11/30/2007

SCALES



APPROVED: July 2 2007
COUNTY ENGINEER

PASSED: July 11 2007
DISTRICT SEVEN ENGINEER OF LOCAL ROADS & STREETS

PASSED: July 11 2007
DISTRICT SIX ENGINEER OF CONSTRUCTION

RELEASING FOR BID
BASED ON LIMITED
REVIEW: July 11 2007
DEPUTY DIRECTOR OF HIGHWAYS, REGION FOUR ENGINEER

STATE OF ILLINOIS
DEPARTMENT OF TRANSPORTATION

SUMMARY OF QUANTITIES

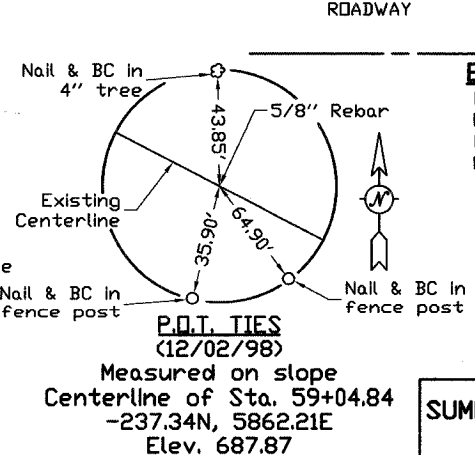
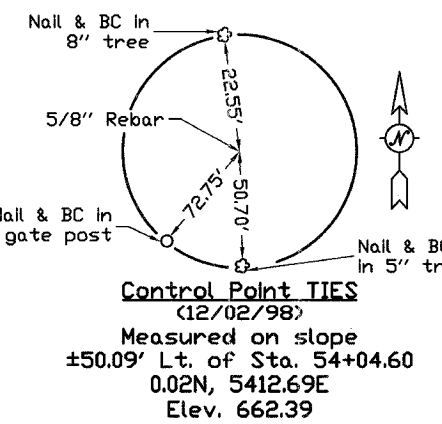
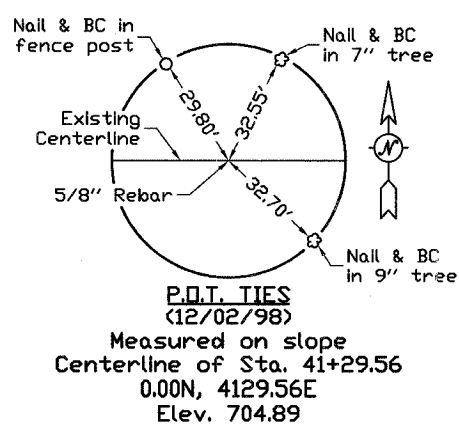
CODE NO.	ITEM	UNIT	QUANTITY
20100110	TREE REMOVAL (6 TO 15 UNITS DIAMETER)	UNIT	696
20100210	TREE REMOVAL (OVER 15 UNITS DIAMETER)	UNIT	110
20200100	EARTH EXCAVATION	CU YD	4,887
20400800	FURNISHED EXCAVATION	CU YD	12,862
28000250	TEMPORARY EROSION CONTROL SEEDING	POUND	500
28000300	TEMPORARY DITCH CHECKS	EACH	10
28000400	PERIMETER EROSION BARRIER	FOOT	3,557
35100100	AGGREGATE BASE COURSE, TYPE A	TON	1,808
* 40200800	AGGREGATE SURFACE COURSE, TYPE B	TON	200
40300300	BITUMINOUS MATERIALS (COVER AND SEAL COATS)	GALLON	2,905
40300500	COVER COAT AGGREGATE	TON	45
40300600	SEAL COAT AGGREGATE	TON	45
48100100	AGGREGATE SHOULDERS, TYPE A	TON	488
* XX007033	THREE SIDED PRECAST CONCRETE STRUCTURES, 32'x12'	FOOT	102.7
50100100	REMOVAL OF EXISTING STRUCTURES	EACH	1
50300225	CONCRETE STRUCTURES	CU YD	183.7
50800205	REINFORCEMENT BARS, EPOXY COATED	POUND	14,890
51500100	NAME PLATES	EACH	1
542D0220	PIPE CULVERTS, CLASS D TYPE 1 15"	FOOT	108
54201285	PIPE CULVERTS, TYPE 2, RCCP 30"	FOOT	96
54213675	PRECAST REINFORCED CONCRETE FLARED	EACH	2
	END SECTIONS 30"		
59300100	CONTROLLED LOW STRENGTH MATERIAL	CU YD	376.5
△ 63000000	STEEL PLATE BEAM GUARD RAIL, TYPE A	FOOT	300
△ 63100167	TRAFFIC BARRIER TERMINAL TYPE 1, SPECIAL (TANGENT)	EACH	4
67100100	MOBILIZATION	L SUM	1
70101830	TRAFFIC CONTROL AND PROTECTION, STANDARD BLR 21	L SUM	1
* 78201000	TERMINAL MARKER - DIRECT APPLIED	EACH	4
* LR355175	BITUMINOUS STABILIZED BASE COURSE	TON	1121
* LR355205	BITUMINOUS MATERIALS (PRIME COAT)	GALLON	363

* SEE SPECIAL PROVISIONS △ SPECIALTY ITEMS

CONSTRUCTION TYPE CODE: X023-2A

TREE REMOVAL SCHEDULE			
Station	Offset	6 to 15 Units Diameter	Over 15 Units Diameter
44+73	44' LT.	6	
44+80	30' RT.	6	
44+80	30' RT.	6	
44+80	30' RT.	6	
44+80	30' RT.	6	
44+84	49' LT.	8	
44+84	49' LT.	8	
44+84	49' LT.	8	
45+09	41' LT.	7	
45+17	46' LT.	6	
45+45	43' LT.	12	
45+46	38' LT.	8	
45+50	39' LT.	7	
45+68	40' LT.	10	
45+70	41' LT.	7	
45+82	41' LT.	7	
45+89	42' LT.	6	
45+99	45' LT.	6	
46+06	43' LT.	12	
46+06	44' LT.	8	
46+18	45' LT.	7	
46+24	40' LT.	13	
46+42	41' LT.	8	
46+44	45' LT.	8	
46+83	41' LT.	15	
46+86	40' LT.		16
47+07	42' LT.	6	
47+24	39' LT.	10	
47+24	39' LT.	10	
47+35	31' RT.	8	
47+51	42' LT.	8	
47+62	39' LT.	9	
47+70	33' RT.	7	
47+78	37' LT.	12	
47+91	36' RT.	13	
48+00	39' RT.	7	
48+11	42' RT.	8	
48+12	38' LT.	12	
48+18	35' RT.	15	
48+19	36' LT.	6	
48+24	42' LT.	7	
48+24	38' RT.	15	
48+29	34' LT.	10	

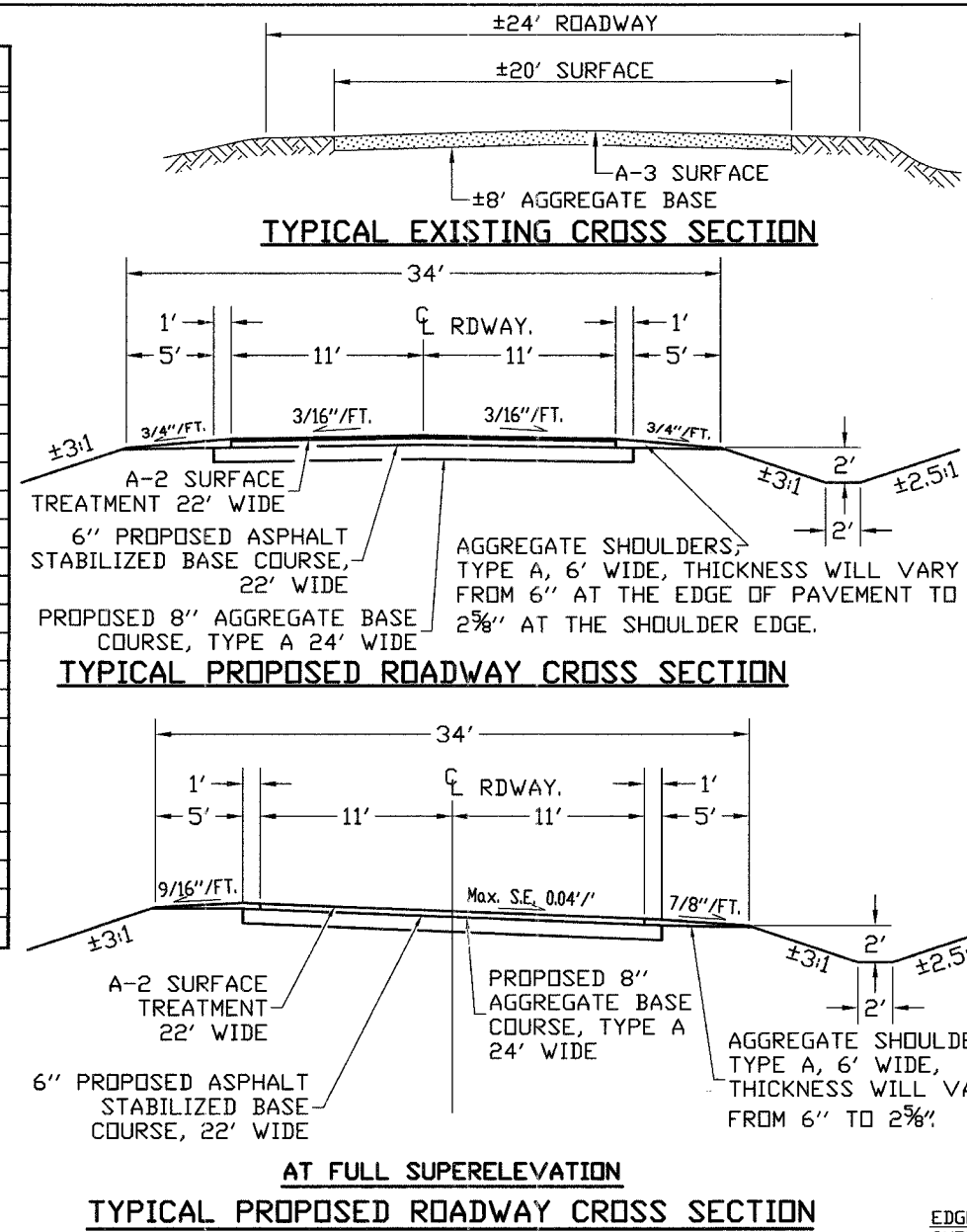
TREE REMOVAL SCHEDULE			
Station	Offset	6 to 15 Units Diameter	Over 15 Units Diameter
48+29	34' LT.	10	
48+33	43' LT.	10	
48+43	38' LT.	6	
48+43	33' RT.	6	
48+67	41' RT.	7	
48+68	35' LT.	10	
48+68	33' LT.	12	
48+69	36' LT.	7	
48+76	36' LT.	8	
48+76	36' LT.	10	16
48+80	35' RT.		
48+88	36' LT.	8	
48+90	34' LT.	6	
49+01	47' LT.	7	
49+15	43' LT.	6	
49+22	33' LT.	15	
49+27	40' LT.	15	20
49+51	36' RT.		
49+53	36' RT.	12	
49+54	36' RT.	15	
49+68	44' RT.	8	
49+71	25' RT.	6	16
49+88	55' LT.		
49+91	29' LT.	10	21
49+92	48' LT.		
50+00	49' LT.	8	
50+04	44' LT.	14	
50+25	40' RT.	13	
50+28	42' RT.	14	21
50+43	38' RT.		
51+41	55' RT.	14	
51+56	53' RT.	10	
51+79	38' LT.	7	
51+92	46' LT.	8	
52+17	48' LT.	6	
52+17	48' LT.	6	
52+22	50' LT.	12	
53+61	1' LT.	6	
57+27	29' RT.	7	
58+00	34' LT.	13	
TOTALS		696	110



APPLICATION RATES USED IN QUANTITY CALCULATIONS

GRANULAR MATERIALS	2.05	TON / CU. YD.
BITUMINOUS MATERIALS (PRIME COAT)	0.10	GALLON / SQ. YD.
BITUMINOUS MATERIALS (SEAL COAT)	0.40	GALLON / SQ. YD.
SEAL COAT AGGREGATE	25.0	LBS. / SQ. YD.
ASPHALT STABILIZED BASE COURSE	103.0	LBS. / SQ. YD. / INCH

NOTE: THE APPLICATION RATES ARE FOR QUANTITY CALCULATIONS ONLY. THE APPLICATION RATE TO BE APPLIED WILL BE DETERMINED BY THE ENGINEER AT THE TIME OF PLACEMENT.



TRAFFIC BARRIER TERMINALS & STEEL PLATE BEAM GUARDRAIL

EASTBOUND TERMINAL WILL START (FIRST POST) AT 48+42 INSTALL TRAF. BAR. TERM., 150' S.P.B.G.R. & TRAF. BAR. TERM. TRAFFIC SIDE OF EXTRUDER HEAD AND FACE OF S.P.B.G.R. TO BE 15' RIGHT OF CENTERLINE.

WESTBOUND TERMINALS WILL START (FIRST POST) AT 48+75 LT. INSTALL TRAF. BAR. TERM., 150' S.P.B.G.R. & TRAF. BAR. TERM. TRAFFIC SIDE OF EXTRUDER HEAD AND FACE OF S.P.B.G.R. TO BE 15' LEFT OF CENTERLINE.

GENERAL NOTES

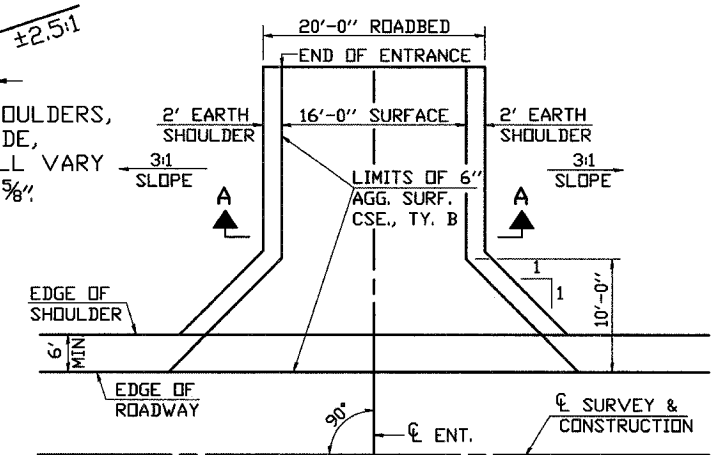
WHERE SECTION OR SUBSECTION MONUMENTS ARE ENCOUNTERED, THE ENGINEER SHALL BE NOTIFIED BEFORE SUCH MONUMENTS ARE REMOVED. THE CONTRACTOR SHALL PROTECT AND CAREFULLY PRESERVE ALL PROPERTY MARKS AND MONUMENTS UNTIL THE OWNER, AND AUTHORIZED SURVEYOR OR AGENT HAS WITNESSED OR OTHERWISE REFERENCED THEIR LOCATION.

SEEDING TO BE DONE BY OTHERS IN ACCORDANCE WITH I.D.O.T. STANDARD SPECIFICATIONS.

ROAD CLASSIFICATION: COLLECTOR ADT 0-250
TRANSITION FROM EXISTING ROADWAY TO PROPOSED ROADWAY TO BE CONSTRUCTED FROM STA. 44+00.00 TO STA. 44+50.00 AND FROM STA. 58+38.92 TO STA. 58+88.92

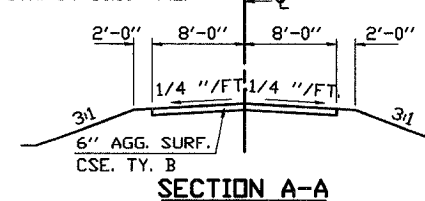
ANY EARTHWORK FROM STA. 49+59 TO 50+46 WILL BE INCIDENTAL TO THREE SIDED PRECAST CONCRETE STRUCTURES.

CHANNEL EXCAVATION: (INCIDENTAL TO THREE SIDED PRECAST CONCRETE STRUCTURES). THE CHANNEL SHALL BE EXCAVATED AS SHOWN WITHIN THE LIMITS OF THE PROPOSED STRUCTURE, THEN TAPER TO THE EXISTING CHANNEL AT THE R.O.W. LINES.



ENTRANCE DETAIL

RT. STA. 48+00.00 F.E.
LT. STA. 51+64.40 F.E.
RT. STA. 53+41.00 F.E.
LT. STA. 54+30.00 F.E.

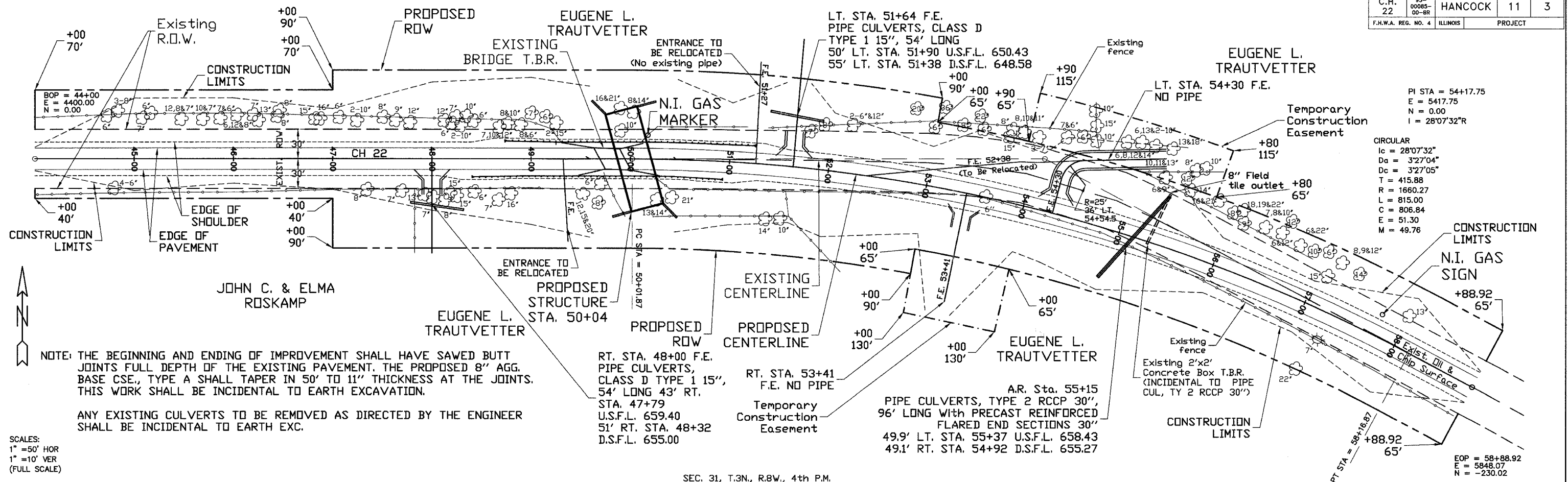


SECTION A-A

SUMMARY OF QUANTITIES, GENERAL NOTES AND TYPICAL CROSS SECTION

SECTION 93-00085-00-BR
COUNTY HIGHWAY 22
HANCOCK COUNTY
STATION 50+04.00

ROUTE NO.	SECTION	COUNTY	TOTAL SHEETS	SHEET NO.
C.H. 22	93-00085-00-BR	HANCOCK	11	3
F.H.W.A. REG. NO. 4 ILLINOIS PROJECT				



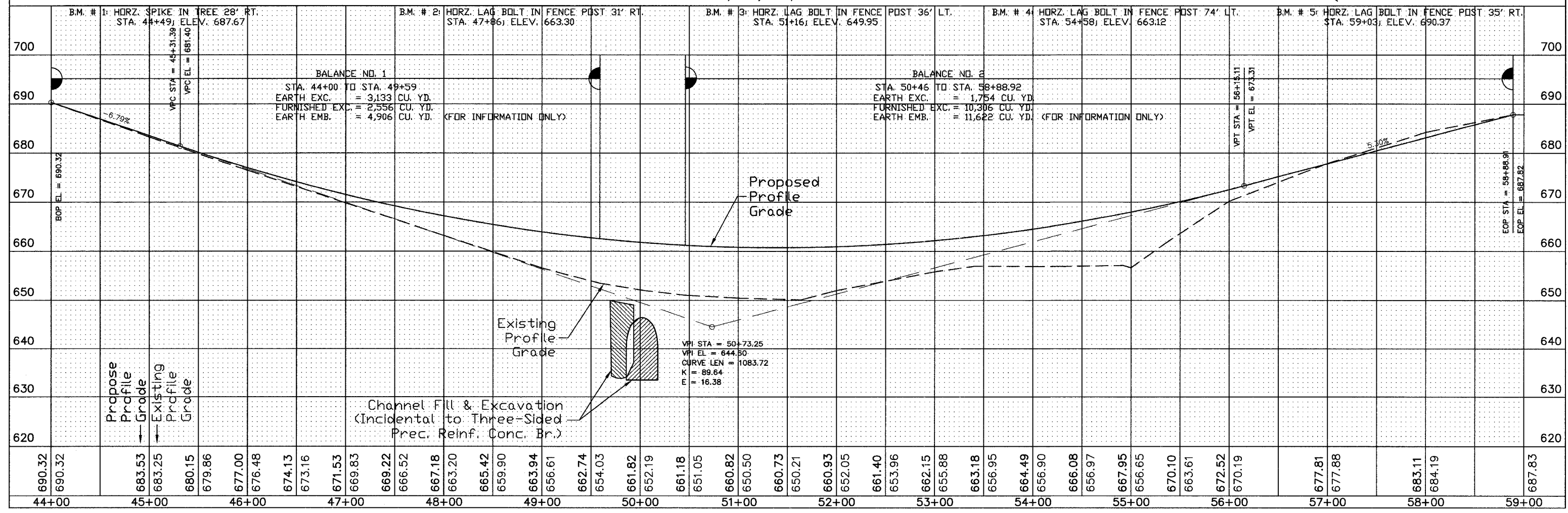
PI STA = 54+17.75
 E = 5417.75
 N = 0.00
 I = 28'07"32"R

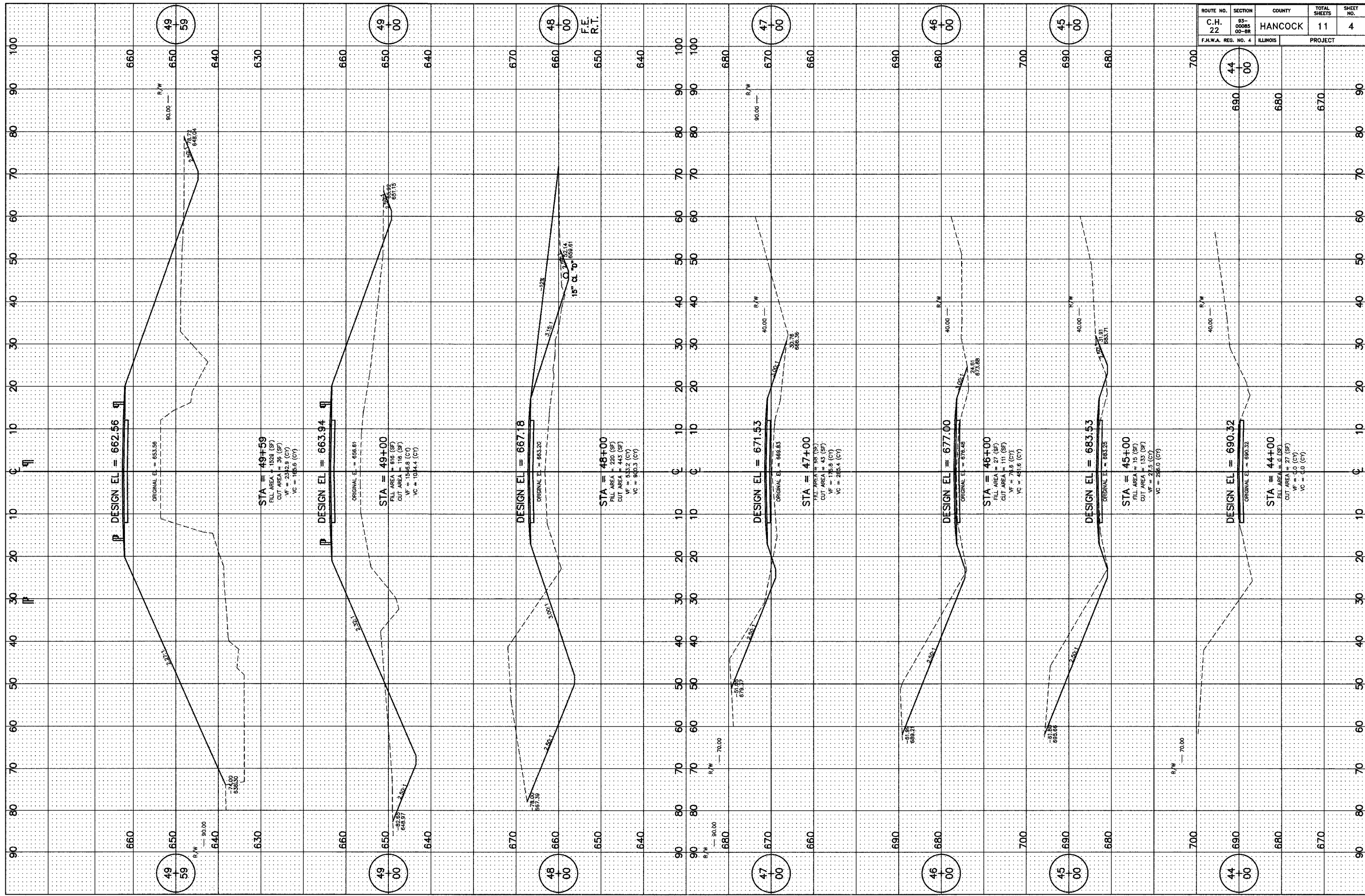
CIRCULAR
 I_c = 28'07"32"
 D_a = 3'27"04"
 D_c = 3'27"05"
 T = 415.88
 R = 1660.27
 L = 815.00
 C = 806.84
 E = 51.30
 M = 49.76

NOTE: THE BEGINNING AND ENDING OF IMPROVEMENT SHALL HAVE SAWED BUTT JOINTS FULL DEPTH OF THE EXISTING PAVEMENT. THE PROPOSED 8" AGG. BASE CSE., TYPE A SHALL TAPER IN 50' TO 11" THICKNESS AT THE JOINTS. THIS WORK SHALL BE INCIDENTAL TO EARTH EXCAVATION.

ANY EXISTING CULVERTS TO BE REMOVED AS DIRECTED BY THE ENGINEER SHALL BE INCIDENTAL TO EARTH EXC.

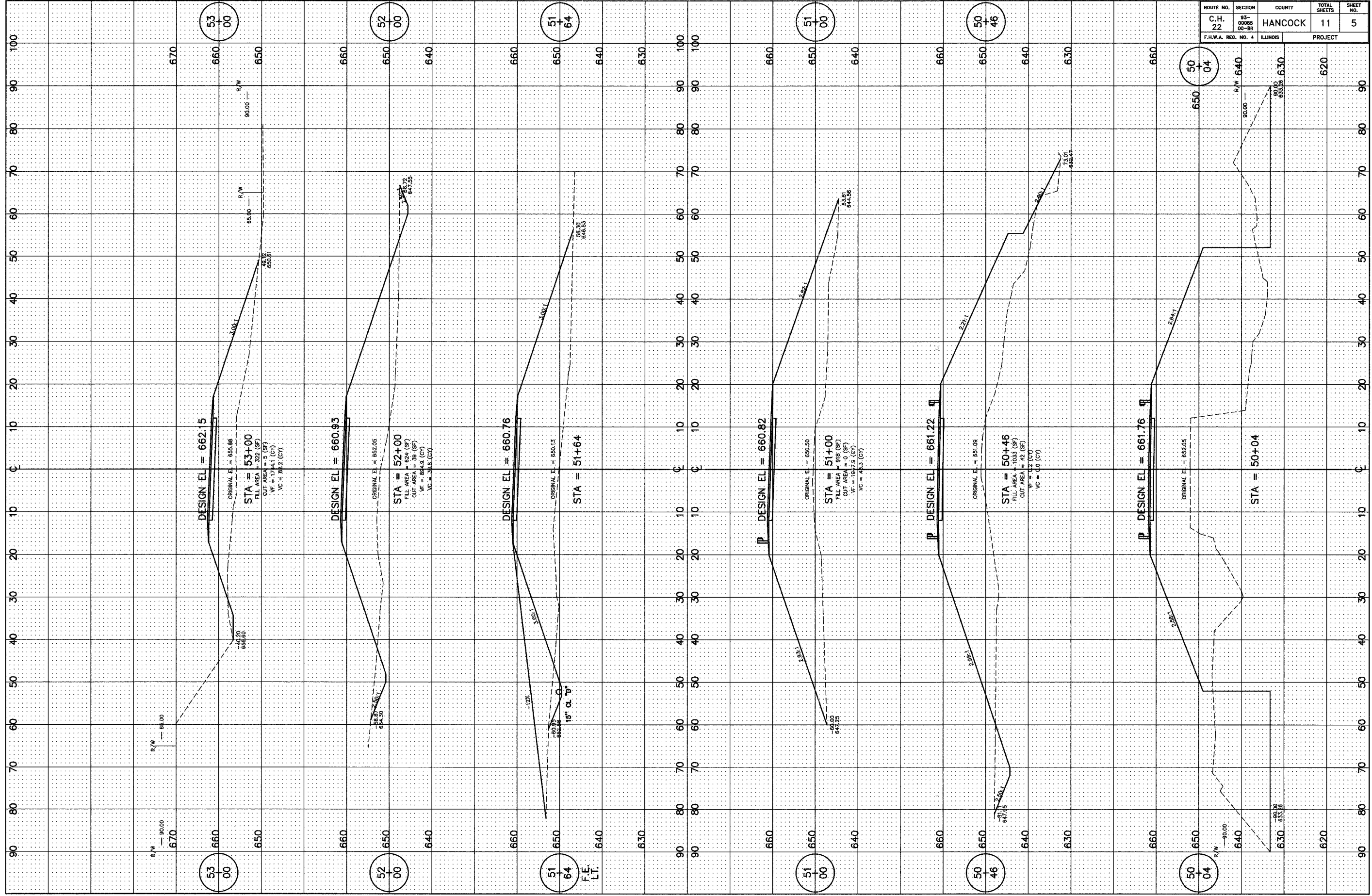
SCALES:
 1" = 50' HOR
 1" = 10' VER
 (FULL SCALE)





ROUTE NO.	SECTION	COUNTY	TOTAL SHEETS	SHEET NO.
C.H. 22	95 0085 00-8R	HANCOCK	11	4
F.H.W.A. REG. NO. 4		ILLINOIS PROJECT		

ROUTE NO. C.H. 22	SECTION 95 00-85 00-88	COUNTY HANCOCK	TOTAL SHEETS 11	SHEET NO. 5
F.H.W.A. REG. NO. 4		ILLINOIS PROJECT		



53
00

52
00

51
64

51
00

50
46

50
04

53
00

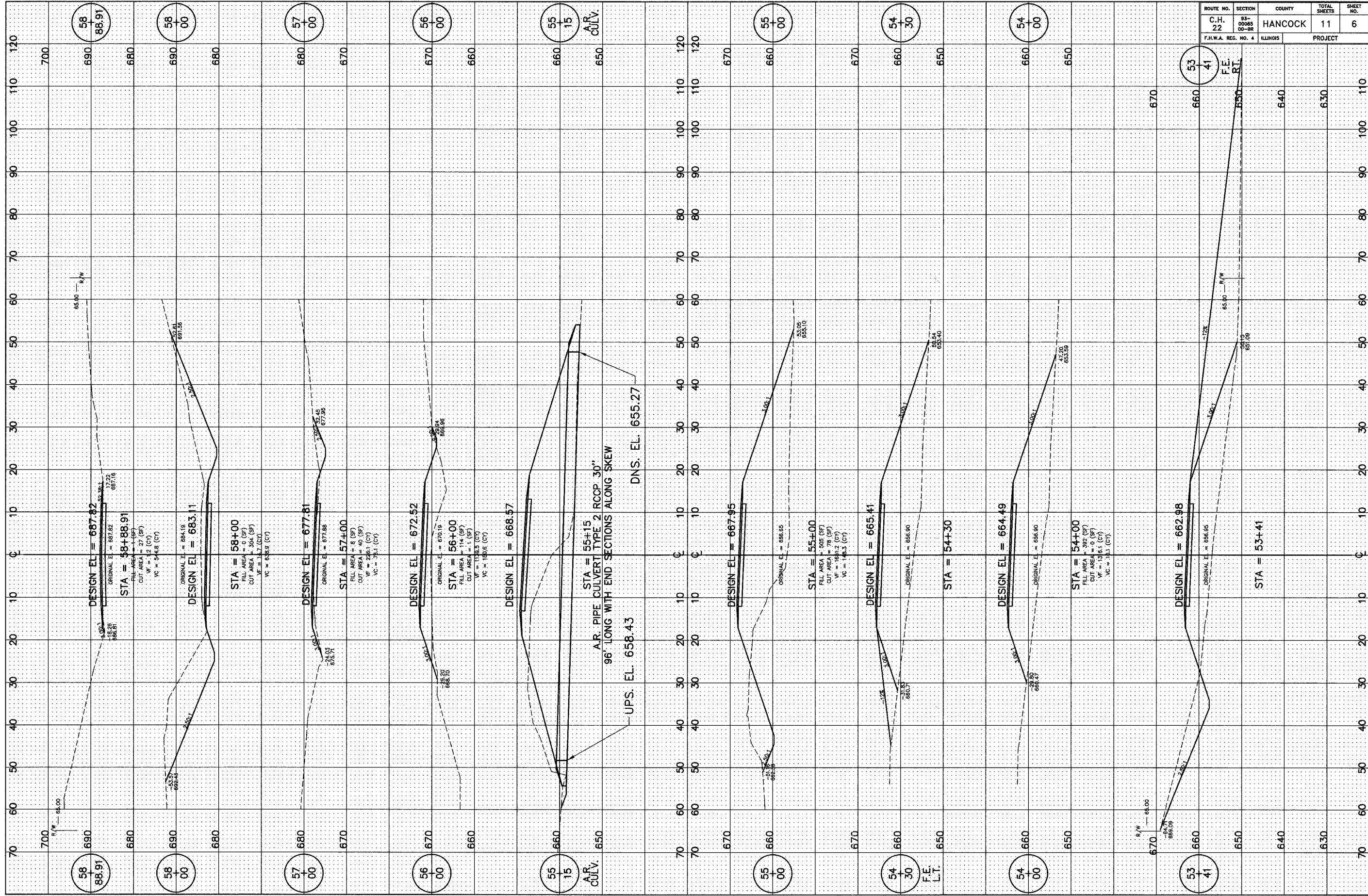
52
00

51
64
F.F.
L.T.

51
00

50
46

50
04



ROUTE NO.	SECTION	COUNTY	TOTAL SHEETS	SHEET NO.
C.H. 22	93-0008-00-8R	HANCOCK	11	6
F.H.W.A. REG. NO. 4		ILLINOIS	PROJECT	

58
88.91

58
00

57
00

56
00

55
15
A.R.
CULV.

55
00

54
30
F.E.
L.T.

54
00

53
41
F.E.
R.T.

58
88.91

58
00

57
00

56
00

55
15
A.R.
CULV.

55
00

54
30
F.E.
L.T.

54
00

53
41
F.E.
R.T.

DESIGN EL = 687.82
ORIGINAL E = 887.82
STA = 58+88.91
FILL AREA = 1.72 (SF)
CUT AREA = 27 (SF)
VF = 1.2 (CY)
VC = 344.8 (CY)

DESIGN EL = 683.11
ORIGINAL E = 884.18
STA = 58+00
FILL AREA = 1.72 (SF)
CUT AREA = 39.4 (SF)
VF = 1.7 (CY)
VC = 436.8 (CY)

DESIGN EL = 677.81
ORIGINAL E = 877.88
STA = 57+00
FILL AREA = 8 (SF)
CUT AREA = 40 (SF)
VF = 24.1 (CY)
VC = 79.1 (CY)

DESIGN EL = 672.52
ORIGINAL E = 870.18
STA = 56+00
FILL AREA = 114 (SF)
CUT AREA = 1 (SF)
VF = 113.5 (CY)
VC = 180.6 (CY)

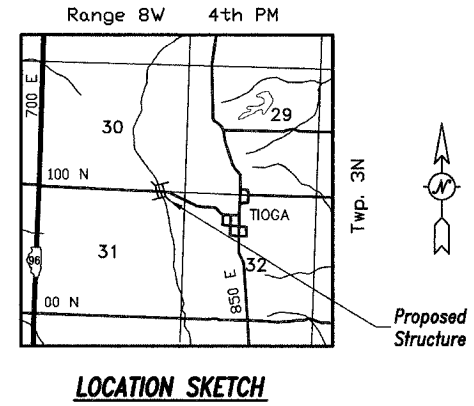
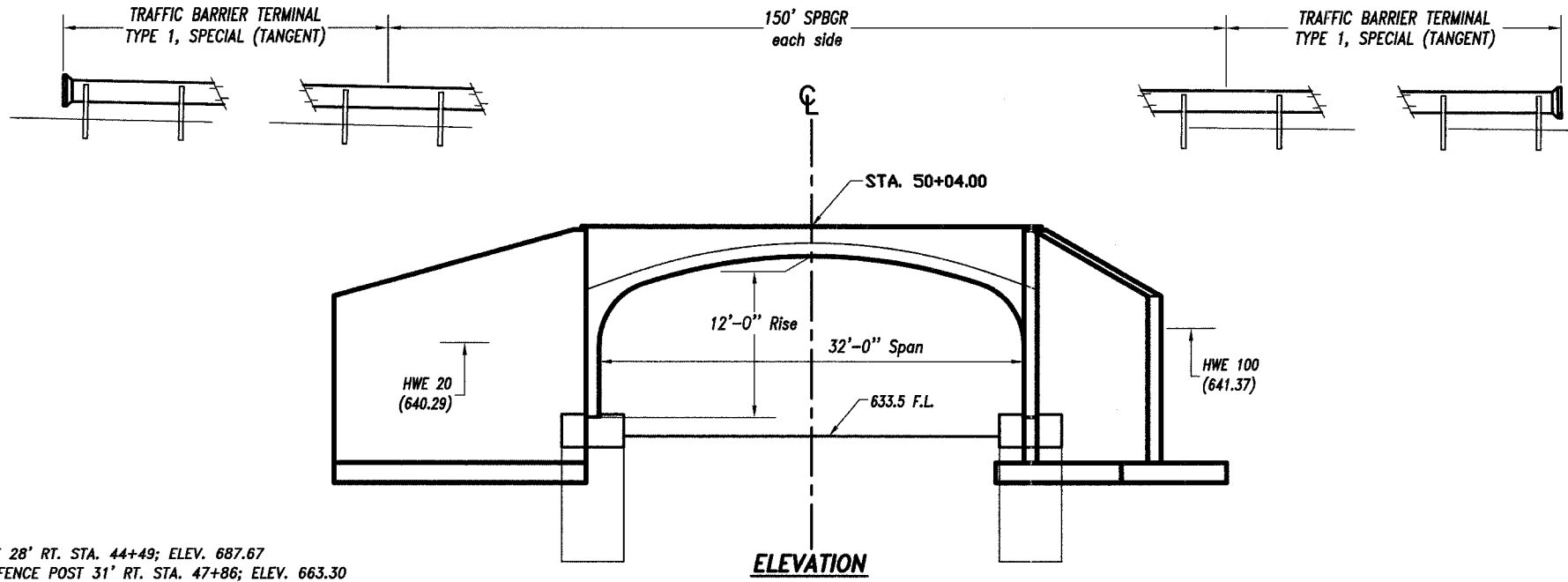
DESIGN EL = 668.57
ORIGINAL E = 868.57
STA = 55+15
A.R. PIPE CULVERT TYPE 2 RCCP 30"
96' LONG WITH END SECTIONS ALONG SKEW
UPS. EL. 658.43
DNS. EL. 655.27

DESIGN EL = 667.95
ORIGINAL E = 856.65
STA = 55+00
FILL AREA = 505 (SF)
CUT AREA = 78 (SF)
VF = 103.2 (CY)
VC = 143.3 (CY)

DESIGN EL = 665.41
ORIGINAL E = 856.90
STA = 54+30
DESIGN EL = 664.49
ORIGINAL E = 856.90
STA = 54+00
FILL AREA = 302 (SF)
CUT AREA = 1 (SF)
VF = 13.1 (CY)
VC = 113 (CY)

DESIGN EL = 662.98
ORIGINAL E = 846.98
STA = 53+41

ROUTE NO.	SECTION	COUNTY	TOTAL SHEETS	SHEET NO.
C.H. 22	93-00085-00-BR	HANCOCK	11	7
F.H.W.A. REG. NO. 4		ILLINOIS	PROJECT	



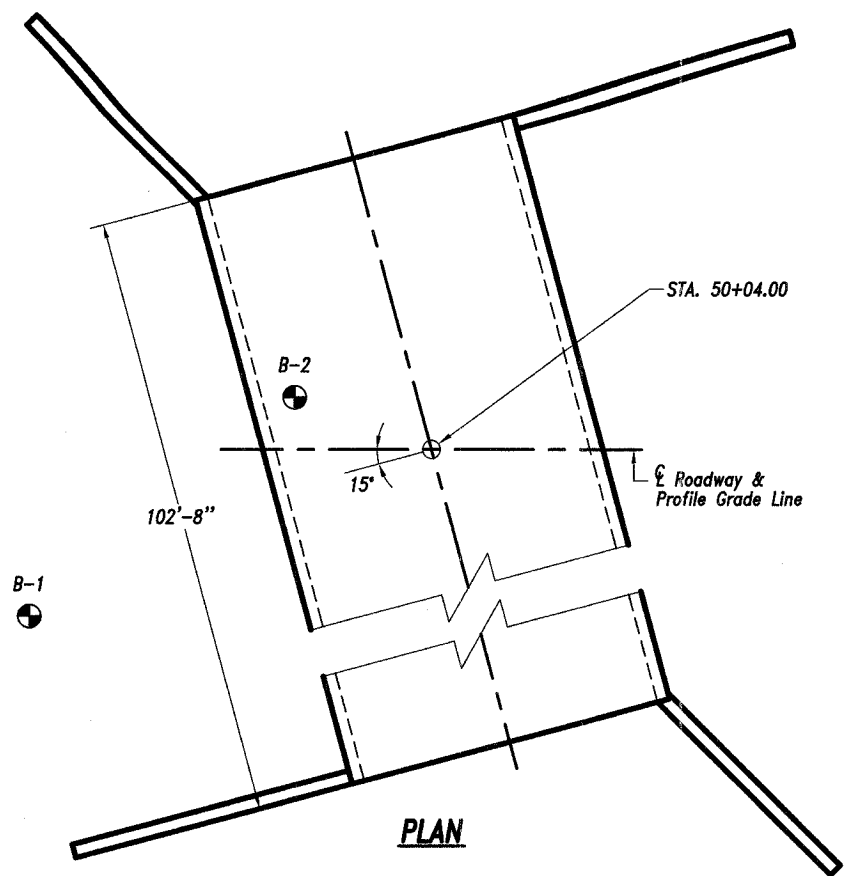
PAUL E. SLY
 REGISTERED PROFESSIONAL ENGINEER OF ILLINOIS
Paul E. Sly 1/2/07
 ILLINOIS PROFESSIONAL NO. 062-043309
 EXPIRES 11/30/07

- B.M. # 1: HORZ. SPIKE IN TREE 28' RT. STA. 44+49; ELEV. 687.67
- B.M. # 2: HORZ. LAG BOLT IN FENCE POST 31' RT. STA. 47+86; ELEV. 663.30
- B.M. # 3: HORZ. LAG BOLT IN FENCE POST 36' LT. STA. 51+16; ELEV. 649.95
- B.M. # 4: HORZ. LAG BOLT IN FENCE POST 74' LT. STA. 54+58; ELEV. 663.12
- B.M. # 5: HORZ. LAG BOLT IN FENCE POST 35' RT. STA. 59+03; ELEV. 690.37

NOTE:
 ALL EXCAVATION AND BACKFILL FROM STA. 49+59 TO STA. 50+46 WILL BE CONSIDERED INCIDENTAL TO THREE SIDED PRECAST CONCRETE STRUCTURE.
 REINFORCEMENT BARS SHALL CONFORM TO THE REQUIREMENTS OF ASTM A706 GRADE 60 (IL MODIFIED).

STATION 50+04.00
 COUNTY HIGHWAY 22
 SEC. 93-00085-00-BR BUILT 200_
 FA PROJ. BROS-067(76)
 HANCOCK COUNTY
 LOADING HS20
 STR. NO. 034-3221

LETTERING FOR NAME PLATE
 Locate Name Plate at Northeast
 Corner of Bridge (See Std. 515001)



SUMMARY OF QUANTITIES

ITEM	UNIT	QUANTITY
CONCRETE STRUCTURES	CU YD	183.7
CONTROLLED LOW STRENGTH MATERIAL	CU YD	376.5
REINFORCEMENT BARS, EPOXY COATED	POUND	14,890
* THREE SIDED PRECAST CONCRETE STRUCTURES 32'x12'	FOOT	102.7
STEEL PLATE BEAM GUARD RAIL, TYPE A	FOOT	300
TRAFFIC BARRIER TERMINAL TYPE 1, SPECIAL (TANGENT)	EACH	4
NAME PLATES	EACH	1

* SEE SPECIAL PROVISIONS

WATERWAY INFORMATION

Drainage Area = 1.27 Sq. Mi.		Low Grade Elev. = 660.73		At Sta. 49+82		
Flood	Freq. Yr.	Q C.F.S.	Opening Sq. Ft. Exist. Prop.	Natural H.W.E.	Head - Ft. Exist. Prop.	Headwater El. Exist. Prop.
Design	20	800	189 225	640.29	* *	* *
Base	100	1223	215 259	641.37	* *	* *
Overtopping						
Max. Calc.	500					

* Elevations Determined By Hancock County

DESIGN SPECIFICATIONS

2002 AASHTO & Interims as applicable
 HS 20-44 Loading.

GENERAL PLAN & ELEVATION

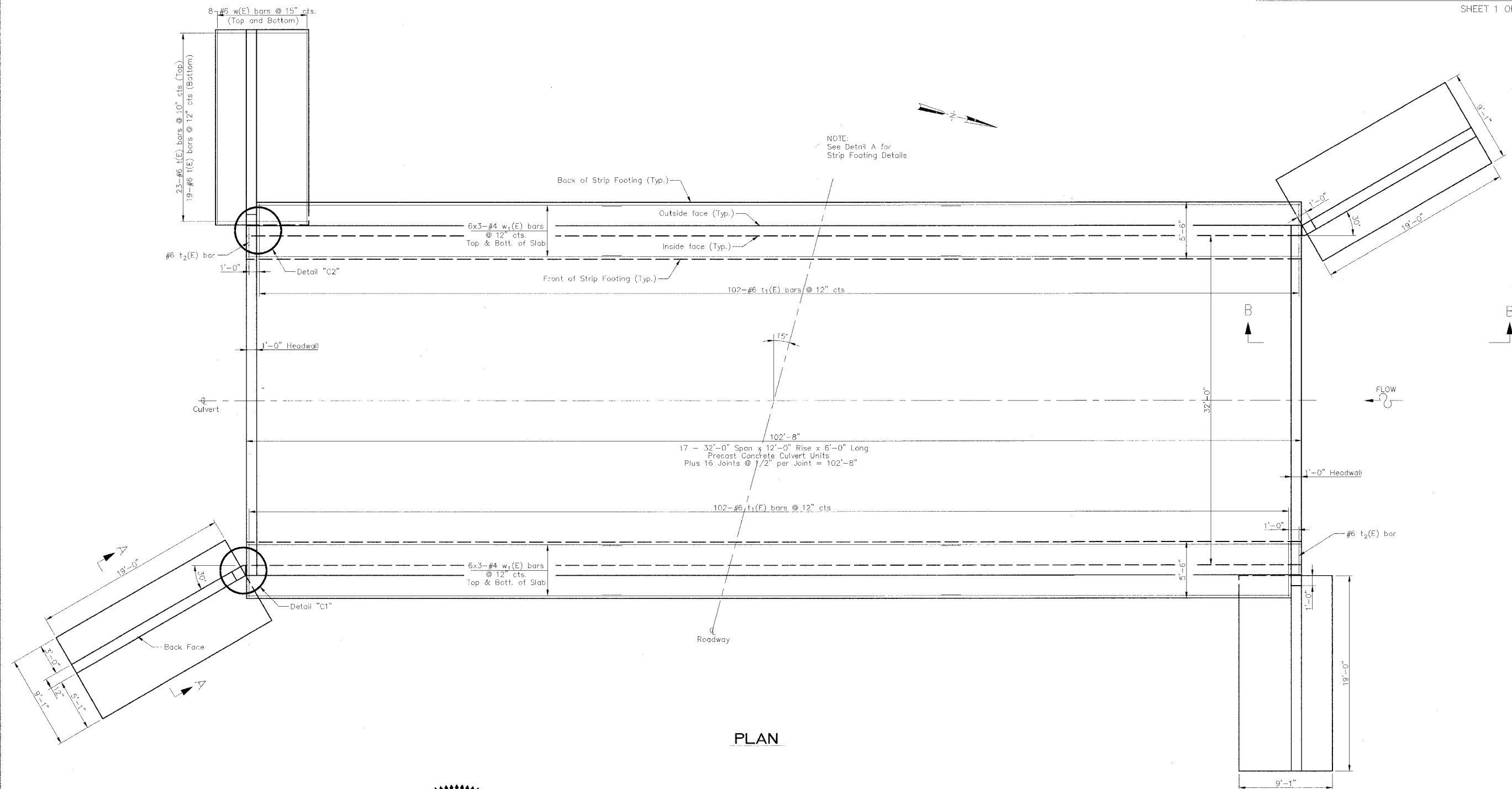
C. H. ROUTE 22

**SECTION 93-00085-00-BR
 HANCOCK COUNTY
 STATION 50+04.00**

ROUTE NO.	SECTION	COUNTY	TOTAL SHEETS	SHEET NO.
C.H. 22	93-00085-00-BR	HANCOCK	11	8

PLAN, ELEVATION, SECTIONS AND DETAILS

SHEET 1 OF 3

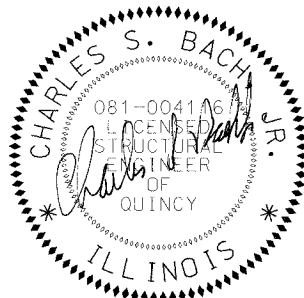


PLAN

I HEREBY CERTIFY THAT THIS ENGINEERING DOCUMENT WAS PREPARED BY ME OR UNDER MY DIRECT PERSONAL SUPERVISION AND THAT I AM A DULY LICENSED STRUCTURAL ENGINEER UNDER THE LAWS OF THE STATE OF ILLINOIS.

Charles S. Bach, Jr.
CHARLES S. BACH, JR. 081-004116 DATE 6-29-07

MY LICENSE RENEWAL DATE IS NOVEMBER 30, 2008
PAGES OR SHEETS COVERED BY THIS SEAL Sheets 1 - 3



NOTES

DESIGN DATA

Design Loading: HS20-44
Design Method: Load factor per AASHTO Specification
Assumed Allowable Soil Bearing for Wingwalls: 5,800 PSF (Verify)
Assumed Allowable Soil Bearing for Strip Footings: 9,000 PSF (Verify)

MATERIALS

Precast units shall be constructed and installed in accordance with Manufacturer's Specifications.
Concrete for Footings and Wingwalls shall have a minimum compressive strength of 4000 psi.
Reinforcing steel for Footings and Wingwalls shall conform to ASTM A 706 Gr 60 (IL Modified).

PLAN FOR CAST IN PLACE WINGWALLS
AND FOUNDATION
C.H. 22
SECTION 93-00085-00-BR
HANCOCK COUNTY
STATION 49+84

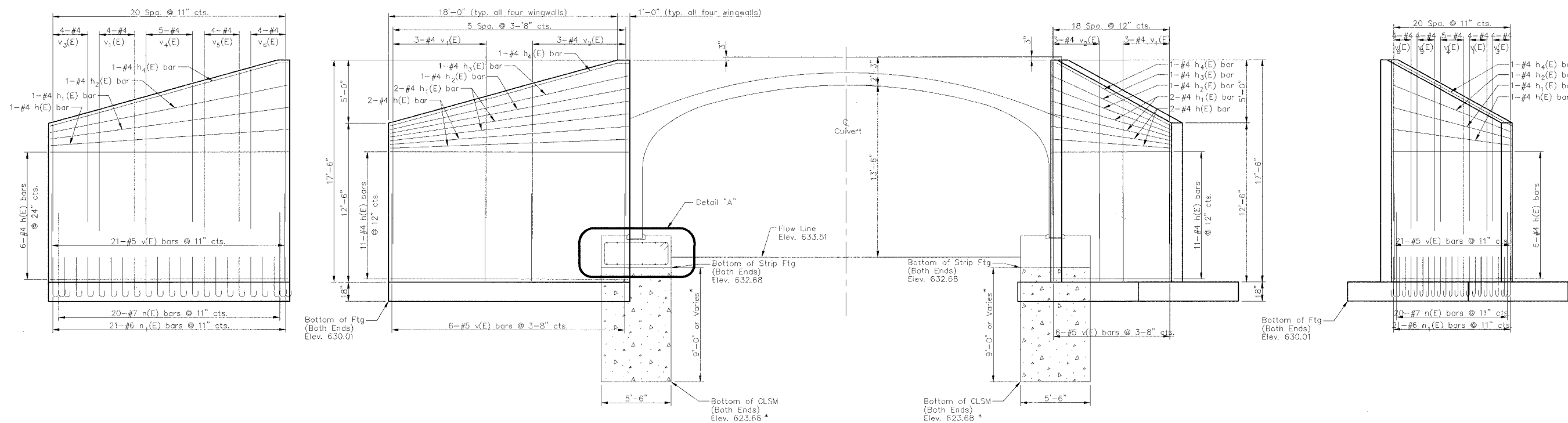


Date:	JAN 2007
Project No.:	R-03-018
File No.:	R03018-1

ROUTE NO.	SECTION	COUNTY	TOTAL SHEETS	SHEET NO.
C.H. 22	93-00085-00-BR	HANCOCK	11	9

PLAN, ELEVATION, SECTIONS AND DETAILS

SHEET 2 OF 3



REINFORCEMENT
BACK FACE

REINFORCEMENT
FRONT FACE

HALF LONG
SECTION

HALF LONG
ELEVATION

REINFORCEMENT
FRONT FACE

REINFORCEMENT
BACK FACE

* Depth of Controlled Low-Strength Material (CLSM) varies.
It is dependent on achieving an allowable soil bearing pressure of 9,000 psf.
Local Agency will perform with consultation from IDOT.

DESIGNED	J.L.S.
CHECKED	C.S.B.
DRAWN	J.L.S.
CHECKED	C.S.B.

ELEVATION, SECTIONS AND DETAILS FOR CAST
IN PLACE WINGWALLS AND FOUNDATION
C.H. 22
SECTION 93-00085-00-BR
HANCOCK COUNTY
STATION 49+84

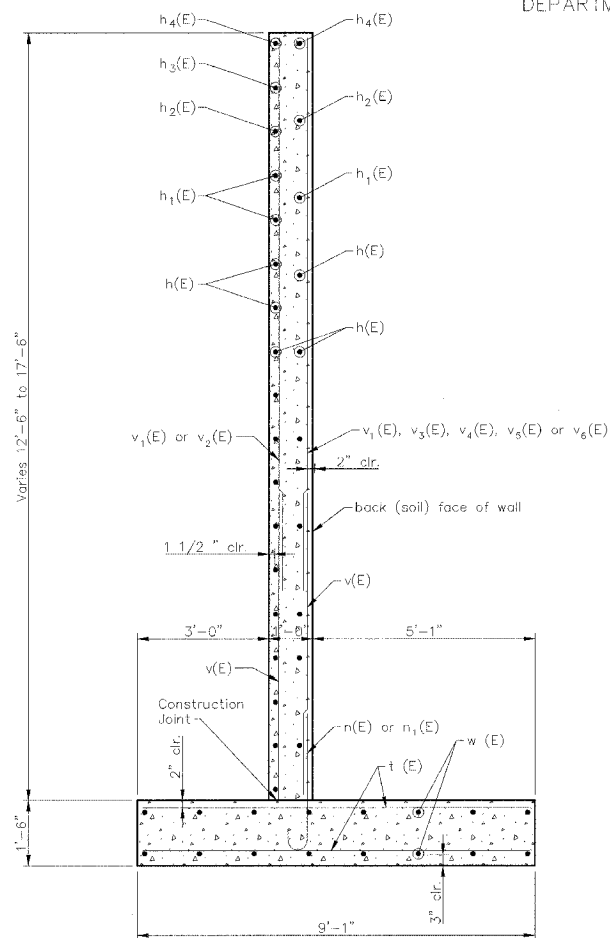
PSBA POEPPING, STONE, BACH & ASSOCIATES, INC.
ARCHITECTS ENGINEERS PLANNERS SURVEYORS
100 S. MAIN ST., P.O. BOX 795 • CHICAGO, IL 60606 • PHONE 312.223-4600
2503 WAIN ST., P.O. BOX 817 • KENOSHA, WI 53141 • PHONE 919.244.4770
www.psba.com email: psba@psba.com

Date :	JAN 2007
Project No. :	R-03-018
File No. :	R03018-2

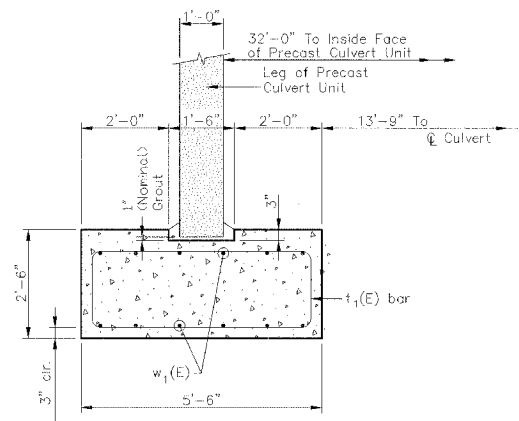
ROUTE NO.	SECTION	COUNTY	TOTAL SHEETS	SHEET NO.
C.H. 22	93-00085-00-BR	HANCOCK	11	10

PLAN, ELEVATION, SECTIONS AND DETAILS

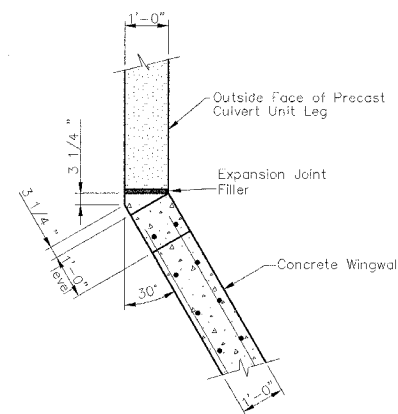
SHEET 3 OF 3



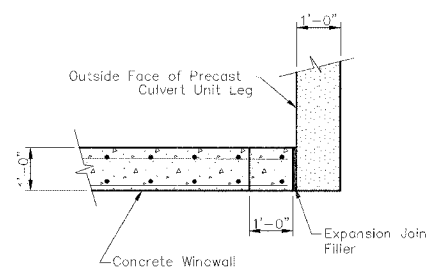
SECTION A-A



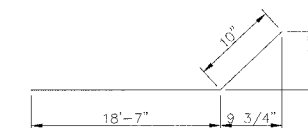
DETAIL A



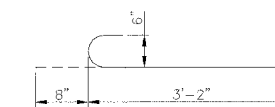
DETAIL C1



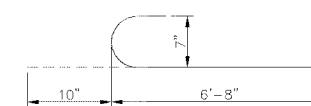
DETAIL C2



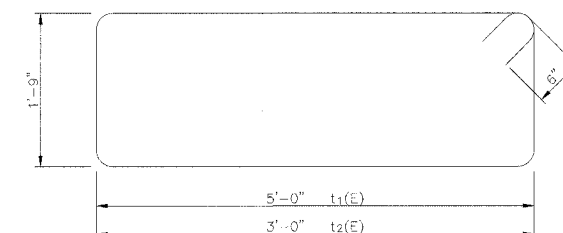
BAR h₄(E)



BAR n₁(E)



BAR n(E)



BARS t₁(E) and t₂(E)

BILL OF MATERIAL

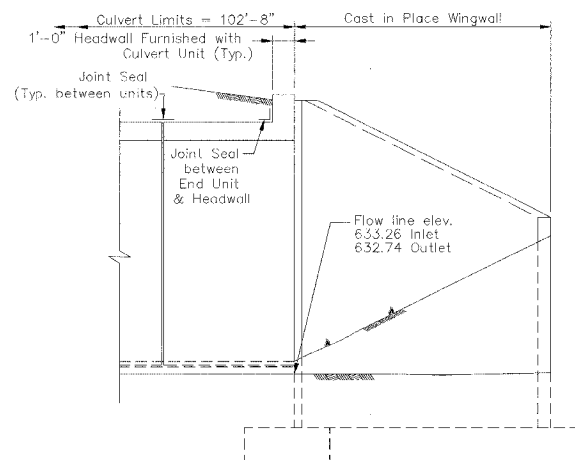
Bar	No.	Size	Length	Shape
h(E)	80	#4	18'-9"	
h ₁ (E)	12	#4	18'-11"	
h ₂ (E)	8	#4	19'-1"	
h ₃ (E)	4	#4	19'-3"	
h ₄ (E)	8	#4	19'-5"	
n(E)	80	#7	7'-6"	
n ₁ (E)	84	#6	3'-10"	
v(E)	108	#5	7'-0"	
v ₁ (E)	28	#4	9'-5"	
v ₂ (E)	12	#4	12'-1"	
v ₃ (E)	16	#4	8'-5"	
v ₄ (E)	20	#4	10'-9"	
v ₅ (E)	16	#4	11'-9"	
v ₆ (E)	16	#4	12'-7"	
t(E)	168	#6	8'-10"	
t ₁ (E)	204	#6	14'-6"	
t ₂ (E)	2	#6	10'-6"	
w(E)	64	#6	18'-9"	
w ₁ (E)	72	#4	35'-6"	
Concrete Structures		Cu. Yd.	183.7	
Controlled Low Strength Material		Cu. Yd.	376.5	
Reinforcement Bars, Epoxy Coated		Pound	14,890	

Reinforcement Bars designated (E) shall be epoxy coated.

Bars indicated thus 6x3-#4 etc indicates 6 lines of bars with 3 lengths per line.

MIN. BAR LAPS

#4(E)	1'-8"
#5(E)	2'-1"
#6(E)	2'-7"
#7(E)	3'-5"
#8(E)	4'-6"



SECTION B-B

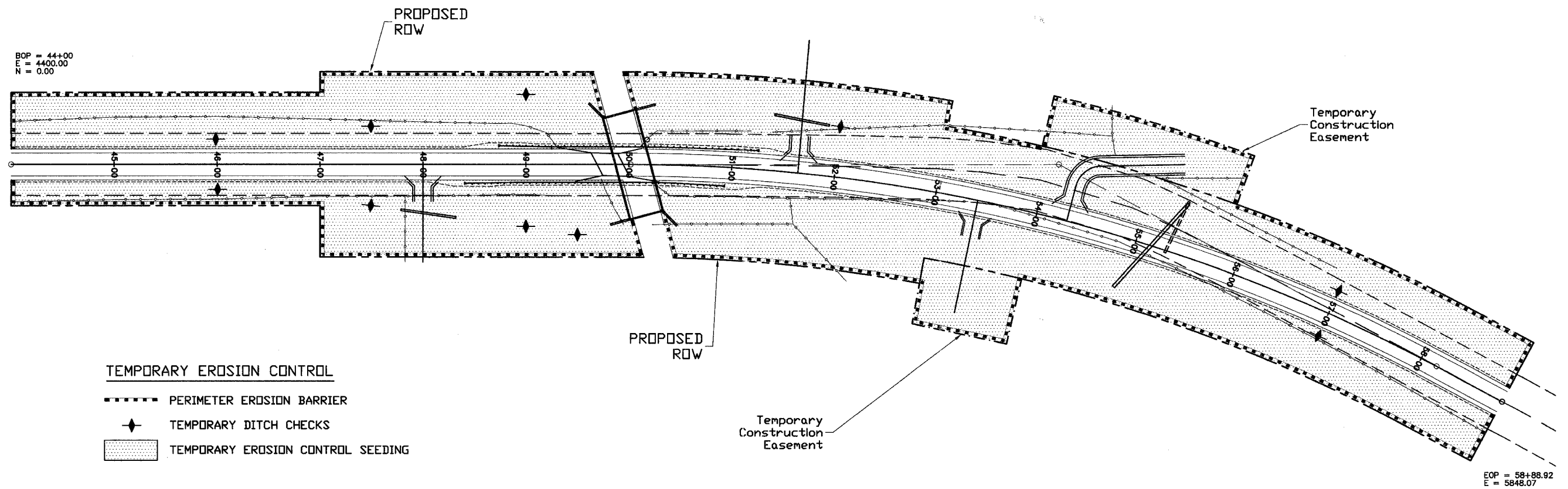
DESIGNED	J.L.S.
CHECKED	C.S.B.
DRAWN	J.L.S.
CHECKED	C.S.B.

SECTIONS AND DETAILS FOR CAST IN PLACE WINGWALLS AND FOUNDATION
C.H. 22
SECTION 93-00085-00-BR
HANCOCK COUNTY
STATION 49+84

PSBA POEPPING, STONE, BACH & ASSOCIATES, INC.
ARCHITECTS ENGINEERS PLANNERS SURVEYORS
100 S. 64TH ST., P.O. BOX 709 • DUNICAN, IL 62304 • PHONE 217/223-4626
2025 MARK ST. P.O. BOX 817 • KEGONKA, IA 50201 • PHONE 319/244-8758
www.psba.com email: psba@psba.com

Date: JAN 2007
Project No.: R-03-01B
File No.: R0301B-3

ROUTE NO.	SECTION	COUNTY	TOTAL SHEETS	SHEET NO.
C.H. 22	93-00085-00-BR	HANCOCK	11	11
F.H.W.A. REG. NO. 4		ILLINOIS	PROJECT	



BOP = 44+00
 E = 4400.00
 N = 0.00

EOP = 58+88.92
 E = 5848.07

- TEMPORARY EROSION CONTROL**
- PERIMETER EROSION BARRIER
 - ◆ TEMPORARY DITCH CHECKS
 - ▨ TEMPORARY EROSION CONTROL SEEDING

EROSION CONTROL PLAN
SECTION 93-00085-00-BR

COUNTY HIGHWAY 22
HANCOCK COUNTY
STATION 50+04