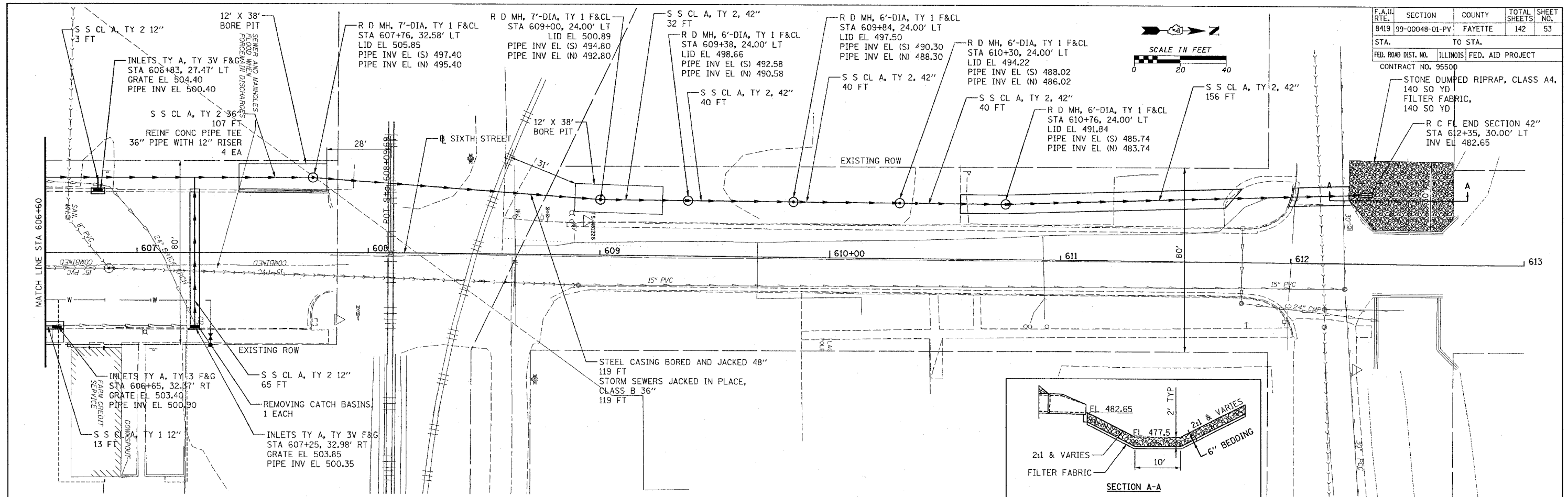


DATE	
BY	
DESIGNED	
PLANNED	
CHECKED	
NOTED	
FILED	

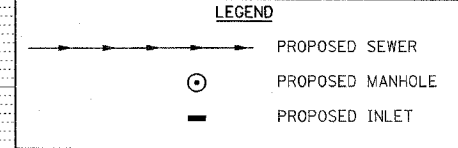
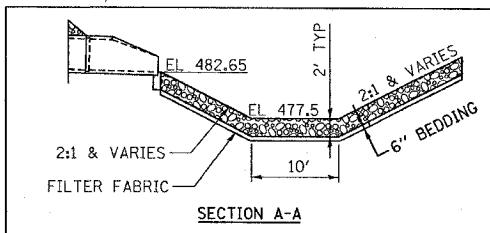
DATE	
BY	
DESIGNED	
PLANNED	
CHECKED	
NOTED	
FILED	

CADD FILE: 14812/64_Sixth_02.dgn
PLOTTED: 01/23/2007



F.A.U. RTE.	SECTION	COUNTY	TOTAL SHEETS	SHEET NO.
8419	99-00048-01-PV	FAYETTE	142	53
STA.	TO STA.			
FED. ROAD DIST. NO.	ILLINOIS	FED. AID PROJECT		
CONTRACT NO. 95500				

STONE DUMPED RIPRAP, CLASS A4,
140 SQ YD
FILTER FABRIC,
140 SQ YD
R C FL END SECTION 42"
STA 612+35, 30.00' LT
INV EL 482.65



ABBREVIATIONS
 S S CL A, TY 1 = STORM SEWERS CLASS A, TYPE 1
 S S CL A, TY 2 = STORM SEWERS CLASS A, TYPE 2
 INLETS, TY A, TY 3V F&G = INLETS, TYPE A, TYPE 3V FRAME AND GRATE
 INLETS, TY B, TY 3V F&G = INLETS, TYPE B, TYPE 3V FRAME AND GRATE
 INLETS, TY A, W/SALVAGE F&G = INLETS, TYPE A, WITH SALVAGE FRAME AND GRATE
 R D INLET TY B, TY 3V F&G = RESTRICTED DEPTH INLET TYPE B, TYPE 3V FRAME AND GRATE
 R D INLET TY B, TY 1 F&CL = RESTRICTED DEPTH INLET TYPE B, TYPE 1 FRAME AND CLOSED LID
 R D MH, 4'-DIA, TY 1 F&CL = RESTRICTED DEPTH MANHOLE, 4'-DIAMETER, TYPE 1 FRAME AND CLOSED LID
 R D MH, 5'-DIA, TY 1 F&CL = RESTRICTED DEPTH MANHOLE, 5'-DIAMETER, TYPE 1 FRAME AND CLOSED LID
 R D MH, 4'-DIA, W/SALVAGE F&G = RESTRICTED DEPTH MANHOLE, 4'-DIAMETER, WITH SALVAGE FRAME AND GRATE

