

F.A.U. RTE.	SECTION	COUNTY	TOTAL SHEETS	SHEET NO.
8419	99-00048-01-PV	FAYETTE	142	63
STA.		TO STA.		
FED. ROAD DIST. NO.		ILLINOIS FED. AID PROJECT		
CONTRACT NO. 95500				

MANHOLES, SANITARY,
4' - DIAMETER, TYPE 1
FRAME, CLOSED LID
STA. 11+83.00, 20.00' LT.
LID EL. 536.22
NW. FL EL. 529.72 - TO BE FIELD VERIFIED
S. FL EL. 529.72 - TO BE FIELD VERIFIED
E. FL EL. 529.72 - TO BE FIELD VERIFIED

LEGEND

- PROPOSED SEWER
- --- --- EXISTING SEWER TO BE LINED
- - - - - EXISTING SEWER TO REMAIN
- PROPOSED MANHOLE
- ⊙ EXISTING MANHOLE TO BE REPLACED
- POINT REPAIR
- +++++ EXISTING SEWER TO BE ABANDONED

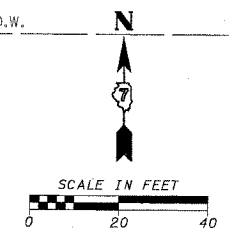
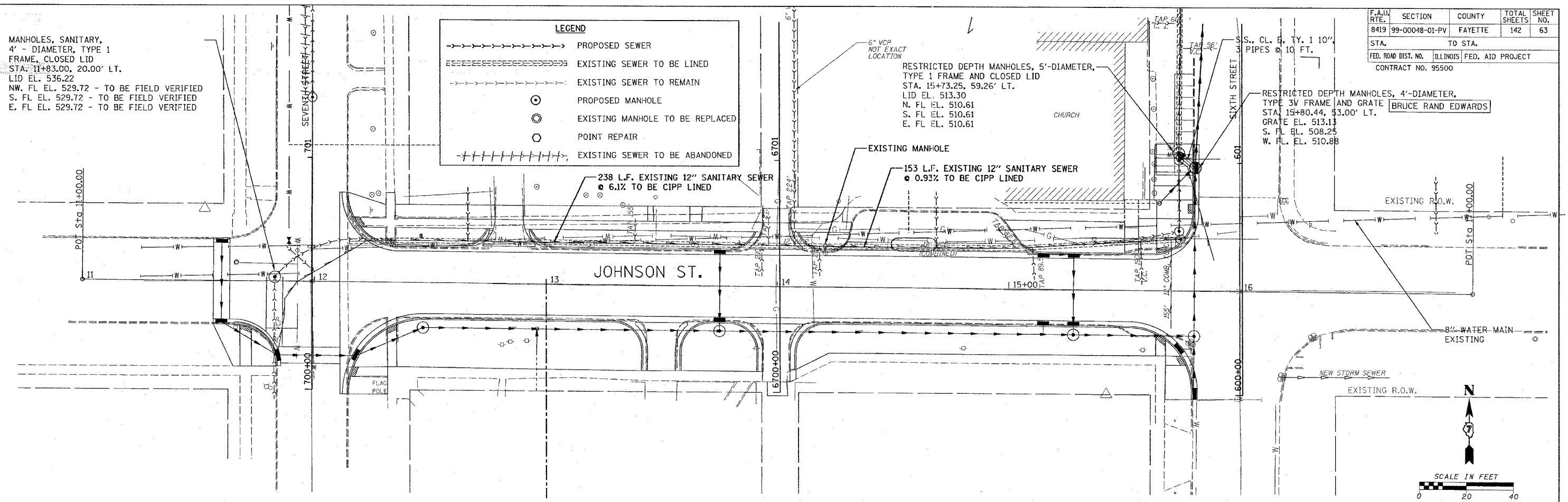
RESTRICTED DEPTH MANHOLES, 5'-DIAMETER,
TYPE 1 FRAME AND CLOSED LID
STA. 15+73.25, 59.26' LT.
LID EL. 513.30
N. FL EL. 510.61
S. FL EL. 510.61
E. FL EL. 510.61

RESTRICTED DEPTH MANHOLES, 4'-DIAMETER,
TYPE 3V FRAME AND GRATE
STA. 15+80.44, 33.00' LT.
GRATE EL. 513.13
S. FL EL. 508.25
W. FL EL. 510.88

PLAN

REVISION	DATE	BY

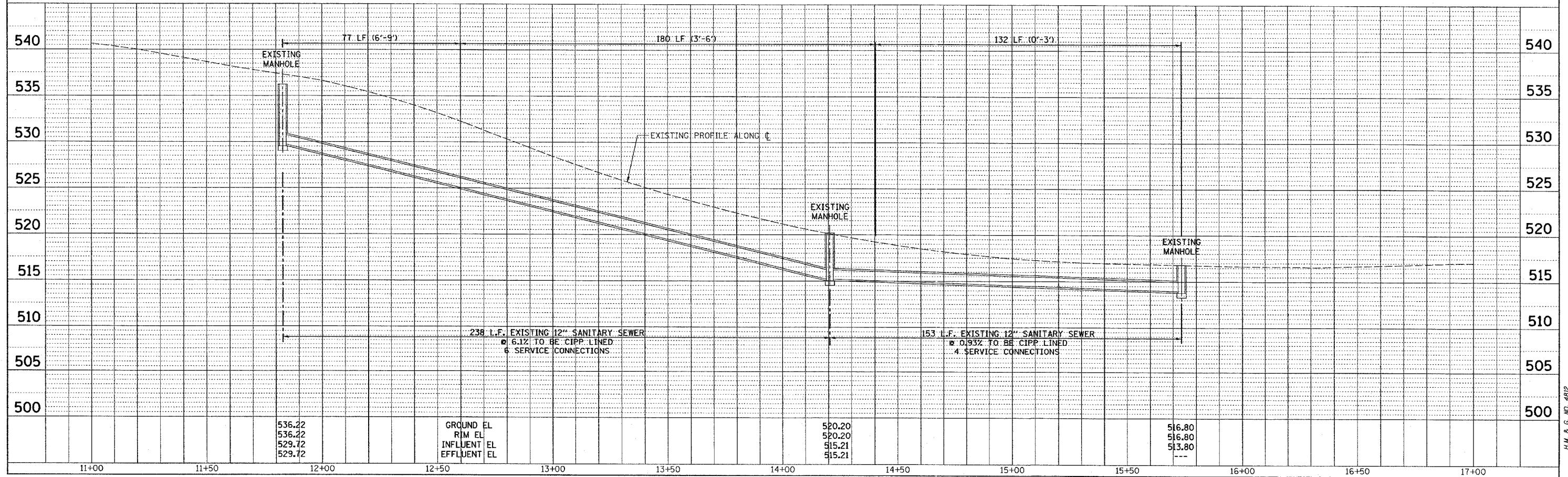
NOTE BOOK NO. _____



PROFILE

REVISION	DATE	BY

NOTE BOOK NO. _____



CADD FILE: /4812/5ans_johnson.dgn
PLOTTED: 01/23/2007

H.M. & G. NO. 4812