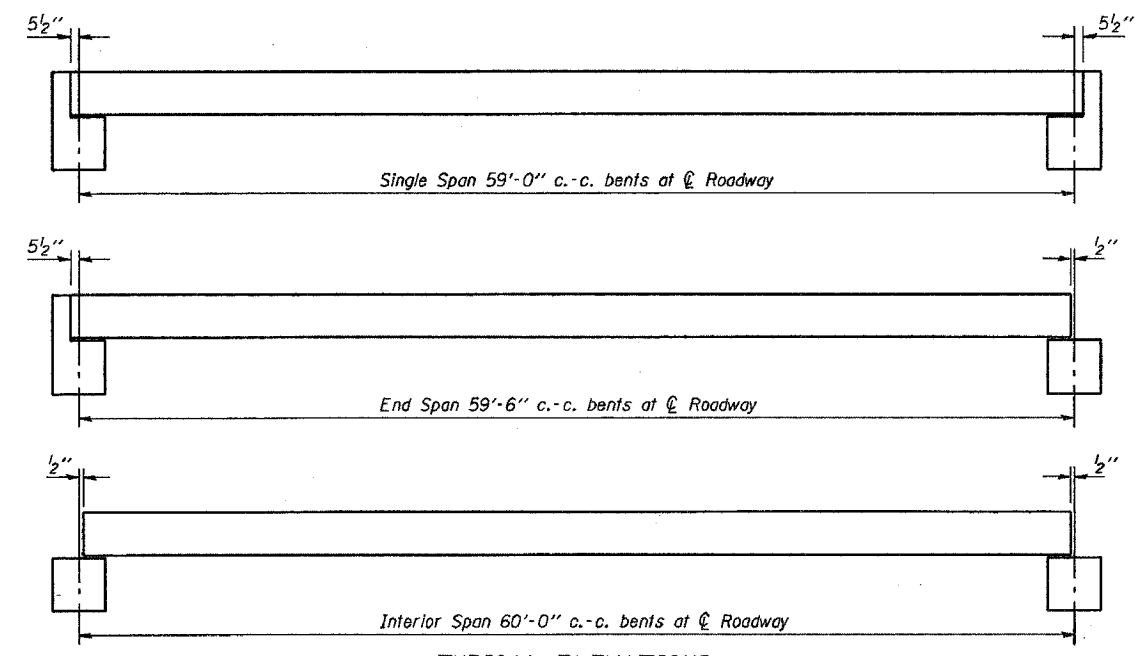
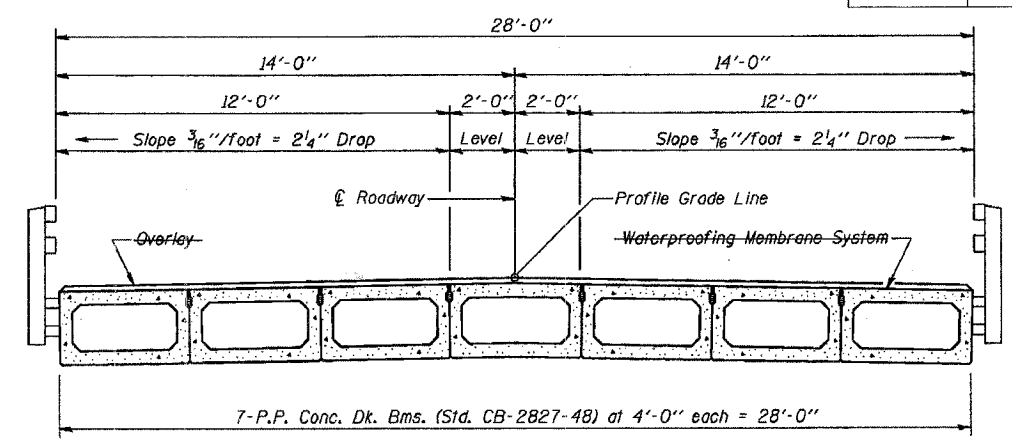


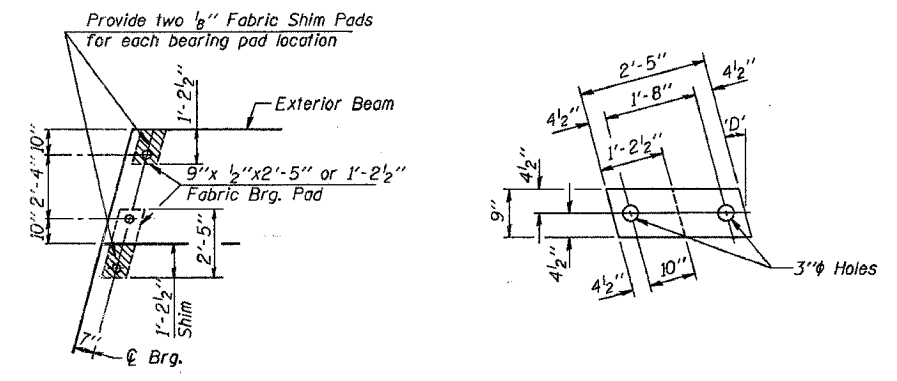
ROUTE NO.	SECTION	COUNTY	TOTAL SHEETS	SHEET
05-07129-00-BP	CRAWFORD	9	1	
STA.		TO STA.		
FED. ROAD DIST. NO.	ILLINOIS	PROJECT		



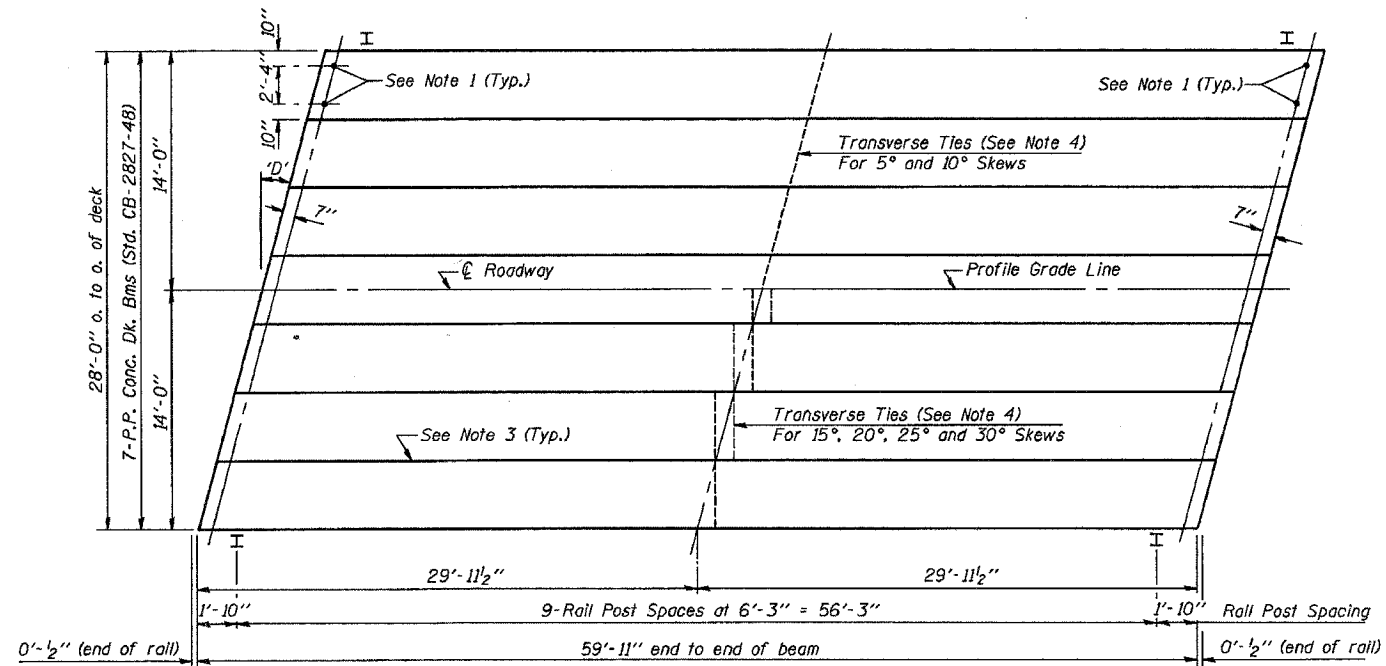
TYPICAL ELEVATIONS



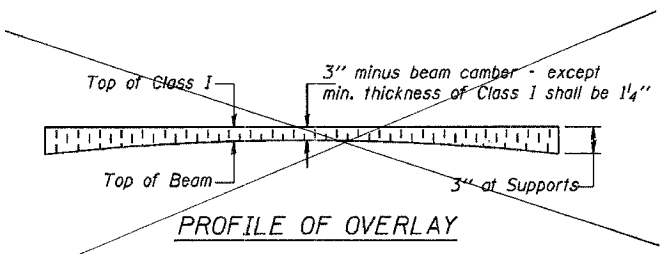
CROSS SECTION



1/2" FABRIC BRG. PAD DETAILS



PLAN

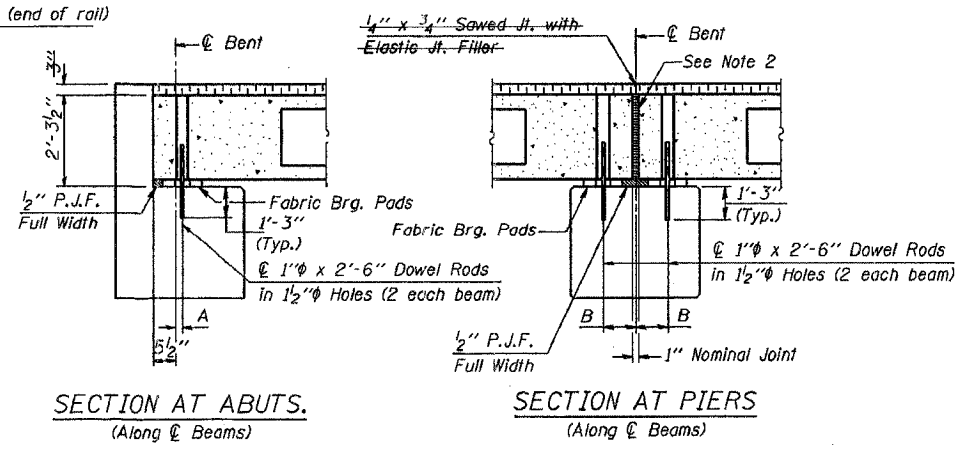


PROFILE OF OVERLAY

DIMENSIONS 'A' AND 'B'

'D'	5°	10°	15°	20°	25°	30°
A	1 1/2"	1 5/8"	1 3/4"	1 7/8"	2 1/8"	2 5/8"
B	7 1/2"	7 5/8"	7 3/4"	8"	8 1/4"	8 5/8"

- NOTES**
- After beams have been erected, holes shall be drilled into substructure and anchor dowels placed. Dowel holes shall be filled with non-shrink grout to top of beam and allowed to cure min. 24 hrs. prior to grouting the shear keys.
 - Nominal 1" joint at centerline of Pier shall be filled with non-shrink grout.
 - Longitudinal keys shall be grouted with non-shrink grout.
 - The 1" diameter rods in the transverse tie assembly shall be tightened to a snug fit and the threads set. Pockets that receive transverse tie bar outside shall be filled with grout after transverse tie assembly is in place.



SECTION AT ABUTS.
(Along centerline of Beams)

SECTION AT PIERS
(Along centerline of Beams)

QUANTITIES FOR ONE SPAN

P.P. Conc. Dk. Bm. 27" Dp.	1680 Sq. Ft.
Steel Rolling	120 Ft.
Waterproofing Membrane System	186.7 Sq. Yds.
Portland-Cement Mortar	
Forming Course	360 Ft.

Note: Quantity of overlay for one span = 21.9 Tons

P.P.C. DECK BEAM SUPERSTRUCTURE			
28' RDWY.	27" BMS.	60' SPAN	LEFT
STANDARD CS-2827-60L			

Illinois Department of Transportation

PASSED APRIL 4, 2005
 Thomas J. Deming, Jr.
 Engineer of Bridge Design

APPROVED APRIL 4, 2005
 Ralph E. Anderson
 Engineer of Bridges and Structures