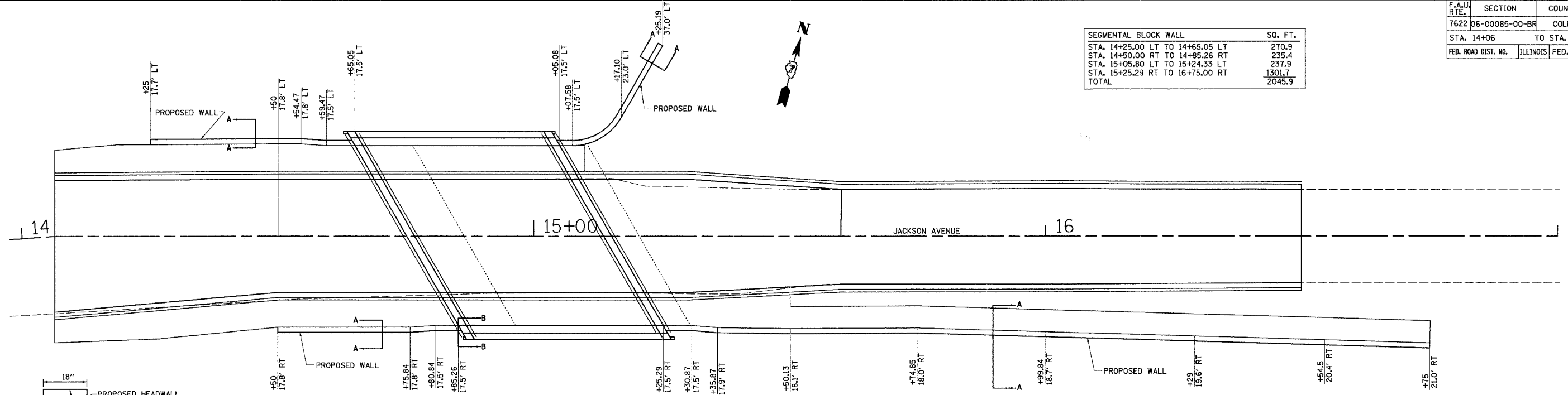
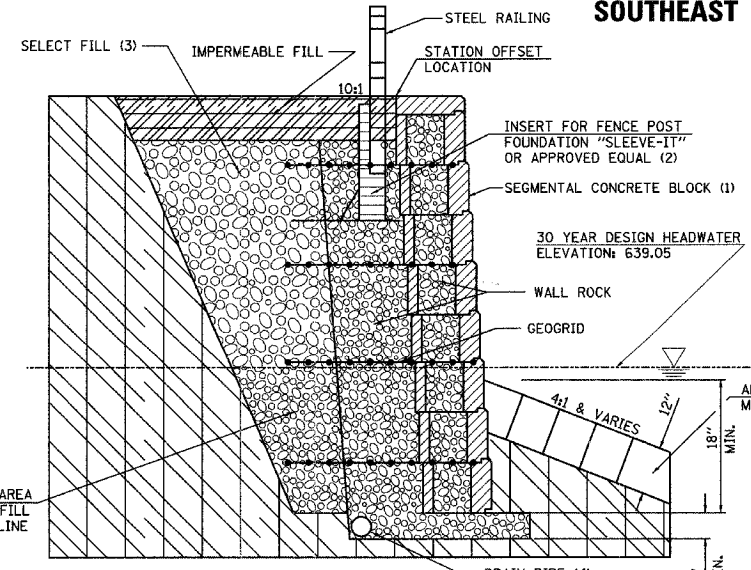
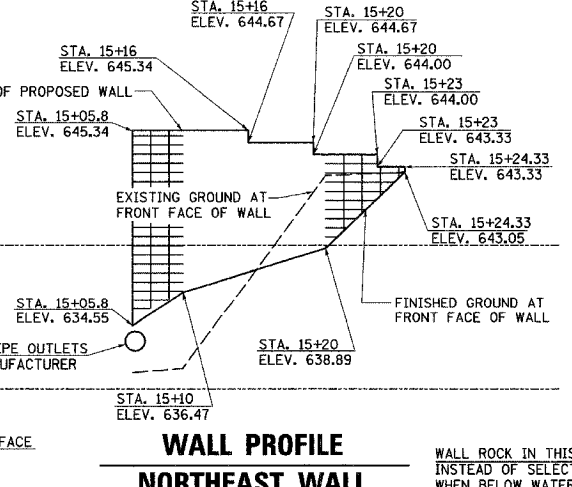
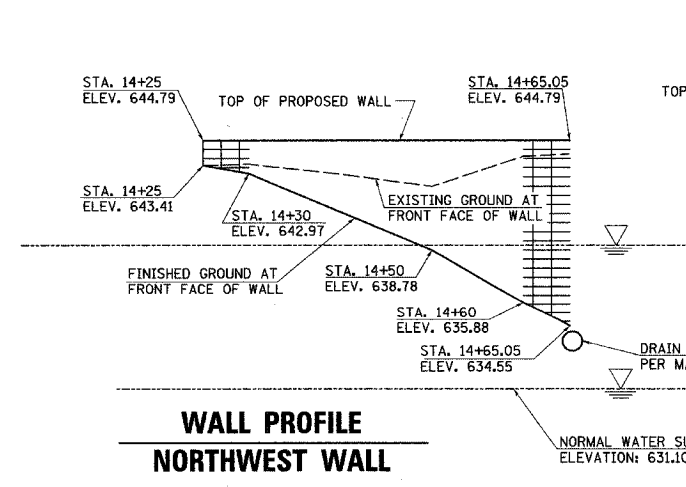
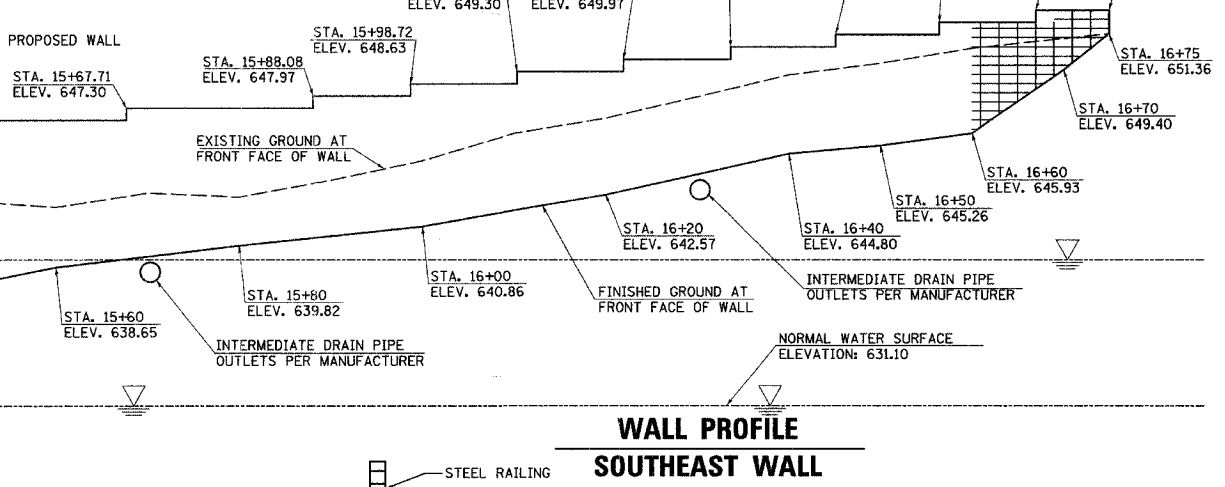
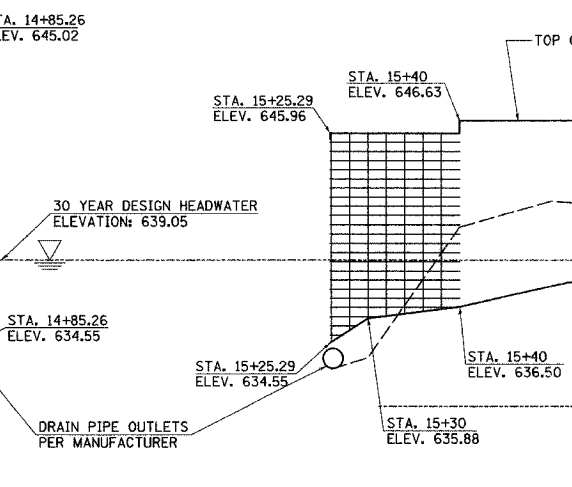
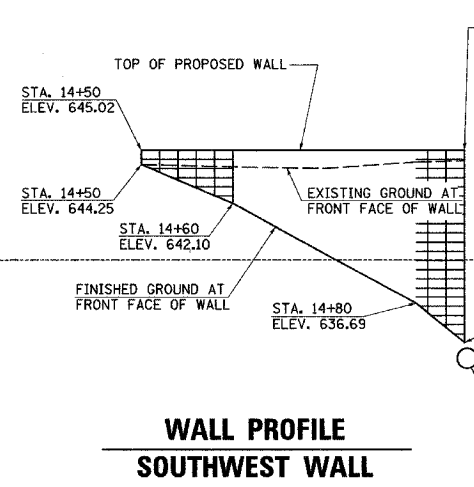


F.A.U. RTE.	SECTION	COUNTY	TOTAL SHEETS	SHEET NO.
7622	06-00085-00-BR	COLES	16	7
STA. 14+06		TO STA. 16+75		
FED. ROAD DIST. NO.	ILLINOIS	FED. AID PROJECT		

SEGMENTAL BLOCK WALL	SQ. FT.
STA. 14+25.00 LT TO 14+65.05 LT	270.9
STA. 14+50.00 RT TO 14+85.26 RT	235.4
STA. 15+05.80 LT TO 15+24.33 LT	237.9
STA. 15+25.29 RT TO 16+75.00 RT	1301.7
TOTAL	2045.9



SECTION B-B
TYPICAL WALL SECTION (N.T.S.)



- NOTE:
- SEGMENTAL CONCRETE BLOCK SHALL BE ALLAN BLOCK CLASSIC, OR EQUAL, PRAIRE TAN COLOR WITH 6° SETBACK TO MATCH RECENTLY CONSTRUCTED RETAINING WALL ON DIVISION STREET. (SEE SPECIAL PROVISIONS)
 - CUT OUT BACK OF SEGMENTAL CONCRETE BLOCK WHERE NECESSARY TO MAINTAIN PLAN LINE OF STEEL RAILING.
 - INFILL WITH MATERIAL MEETING THE REQUIREMENTS OF TRENCH BACKFILL, INCLUDED IN THE COST OF THE BLOCK WALL SYSTEM.
 - DRAIN PIPES TO BE INCLUDED IN COST OF BLOCK WALL SYSTEM.

REVISIONS	
NAME	DATE

ILLINOIS DEPARTMENT OF TRANSPORTATION
SEGMENTAL CONCRETE BLOCK WALL (SPECIAL)
 SCALE: VERT. 1" = 5'
 HORIZ. 1" = 10'
 DATE: 4-27-07
 DRAWN BY: RLH
 CHECKED BY: MED

PLOT DATE = 6/25/2007
 FILE NAME = C:\Users\jackson\Documents\Jackson Ave Bridge\Drawings\WALL\PLR5.SHT
 PLOT SCALE = 10.0000
 USER NAME = JUSER