

STATE OF ILLINOIS
DEPARTMENT OF TRANSPORTATION
DIVISION OF HIGHWAYS
**PLANS FOR PROPOSED
HIGHWAY BRIDGE PROGRAM**
HARTER ROAD DISTRICT
SECTION 99-04128-00-BR
CLAY COUNTY
PROJECT NO. BROS-025(56)
T.R. 325
C-97-057-07

ROUTE NO.	SECTION	COUNTY	TOTAL SHEETS	SHEET NO.
T.R. 325	99-04128-00-BR	CLAY	13	1
ROAD DIST.	ILLINOIS	HARTER		

CONTRACT NO. 95523

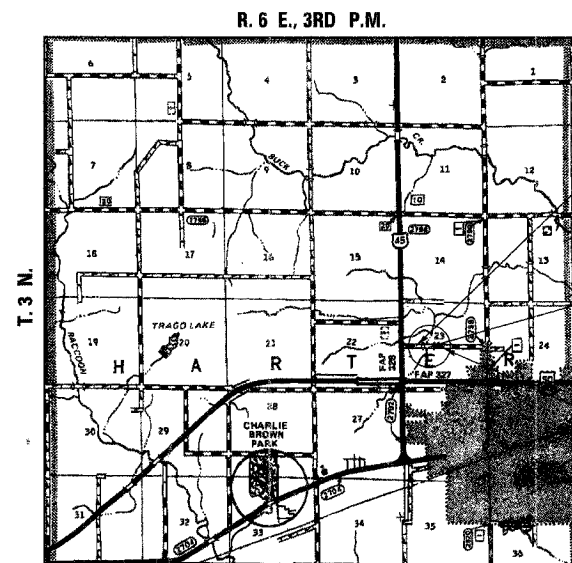
INDEX OF SHEETS	
SHEET NO.	TITLE
1.	COVER SHEET
2.	SUMMARY OF QUANTITIES, GENERAL NOTES & TYPICAL SECTIONS
3.	PLAN AND PROFILE SHEET
4.	SHOULDER AND GUARDRAIL DETAILS
5.-8.	BRIDGE PLANS
9.-13.	STATION CROSS SECTIONS

STANDARDS:

280001-03	TEMPORARY EROSION CONTROL SYSTEMS
515001-02	NAME PLATE FOR BRIDGES
630001-07	STEEL PLATE BEAM GUARDRAIL
630301-04	SHOULDER WIDENING FOR TYPE 1 (SPECIAL) GUARDRAIL TERMINALS
635006-02	REFLECTOR AND TERMINAL MARKER PLACEMENT
702001-06	TRAFFIC CONTROL DEVICES
BLR 21-6	TYPICAL APPLICATION OF TRAFFIC CONTROL DEVICES FOR CONSTRUCTION ON RURAL LOCAL HIGHWAYS
BLR 24-1	MAILBOX TURNOUT FOR LOCAL ROADS

SCALES

PLAN	0' 50' 100'
PROFILE HORIZ.	0' 50' 100'
PROFILE VERT.	0' 5' 10'
CROSS SECTIONS	0' 5' 10'



LOCATION PLAN

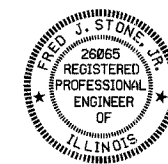
GROSS LENGTH OF SECTION = 850 FEET = 0.161 MILES
NET LENGTH OF SECTION = 850 FEET = 0.161 MILES



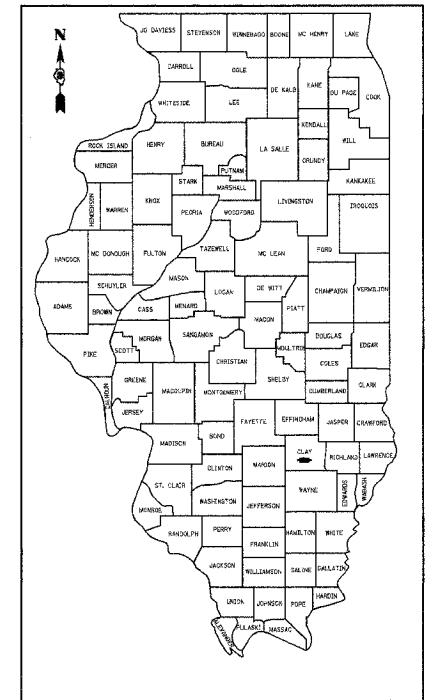
IMPROVEMENT BEGINS
STA. 45 + 60

STA. 50 + 00 - SPECIAL BRIDGE DESIGN
PRECAST PRESTRESSED CONCRETE DECK
BEAM BRIDGE, SINGLE SPAN @ 54'-0",
28'-0" ROADWAY, 0° SKEW
EXISTING S.N. 013-3112
PROPOSED S.N. 013-3230

IMPROVEMENT ENDS
STA. 54 + 10



Fred J. Stone (7-11-07)
ILLINOIS PROFESSIONAL NO. 26065
EXPIRES 11-30-07



LOCATION OF SECTION INDICATED THIS: **CLASSIFICATION: RURAL TWO-LANE LOCAL ROADS**
DESIGN VOLUME: 400-750 ADT
CURRENT ADT: 400 (2009)
FUTURE ADT: 500 (2029)
DESIGN SPEED: 50 MPH

TOLL FREE JOINT UTILITY LOCATING
INFORMATION FOR EXCAVATORS (J.U.L.I.E.)
TELEPHONE NUMBER 1-800-892-0123

PASSED	<i>7-11</i>	2007
	<i>John Williams</i>	ROAD DISTRICT COMMISSIONER
APPROVED	<i>July 7</i>	2007
	<i>John Williams</i>	COUNTY ENGINEER
PASSED	<i>7-16</i>	2007
	<i>Maureen East</i>	DISTRICT SEVEN ENGINEER OF LOCAL ROADS & STREETS
RELEASED FOR BID BASED ON LIMITED REVIEW	<i>7-16</i>	2007
	<i>Christy Rice</i>	DEPUTY DIRECTOR OF HIGHWAYS, REGION FOUR ENGINEER
STATE OF ILLINOIS DEPARTMENT OF TRANSPORTATION		

4440 ASH GROVE
SPRINGFIELD, IL 62711
(217) 793-8600
www.fehr-graham.com

FEHR-GRAHAM & ASSOCIATES, LLC
ENGINEERING AND SCIENCE CONSULTANTS
PROFESSIONAL ENGINEERS, ARCHITECTS, PLANNERS, ENVIRONMENTAL SCIENTISTS, AND SURVEYORS