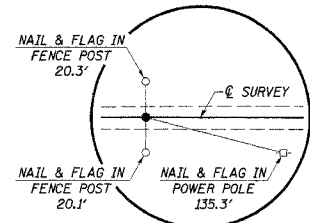
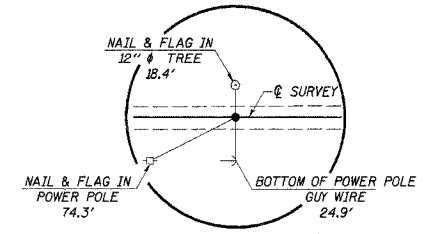


MM 1/4, SEC. 23, T. 3 N., R. 6 E., 3RD P.M.
ROBERT BRISCO

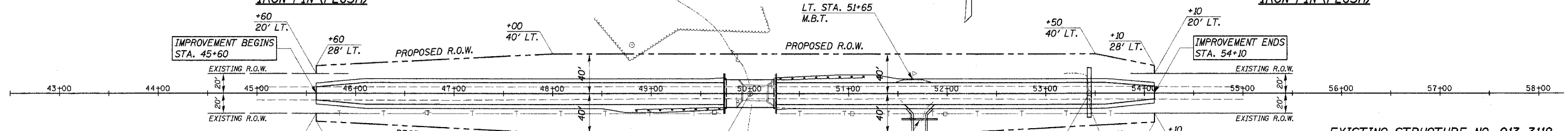
ROUTE	SECTION	COUNTY	TOTAL SHEETS	SHEET NO.
T.R.	99-0412B	CLAY	13	3
325	-00-BR			
STA. 43+00	TO STA. 58+00			
FED. ROAD DIST. NO.	ILLINOIS	HARTER		
CONTRACT NO. 95523				



P.O.T. STA. 45+38.46
IRON PIN (FLUSH)



P.O.T. STA. 58+71.30
IRON PIN (FLUSH)



CHANNEL EXCAVATION

THE CHANNEL SHALL BE EXCAVATED AS SHOWN WITHIN THE LIMITS OF THE PROPOSED STRUCTURE THEN TAPER TO THE EXISTING CHANNEL AT THE R.O.W. LINES. SUITABLE EXCAVATED MATERIAL TO BE USED IN THE EMBANKMENT AS DIRECTED BY THE ENGINEER.

CHANNEL EXCAVATION = 180 CU. YD.

STA. 50+00 - SPECIAL BRIDGE DESIGN
 PRECAST PRESTRESSED CONCRETE DECK
 BEAM BRIDGE SINGLE SPAN 54'-0";
 28'-0" ROADWAY; 0° SKEW.
 PROPOSED S.N. 013-3230

ENTRANCES TO BE BUILT

LT. STA. 51+65, M.B.T.
 RT. STA. 51+72, P.E. -2.0%, 16' ROADBED
 QUANTITIES INCLUDED IN THOSE LISTED

PIPES TO BE REMOVED

RT. STA. 51+70, 4" STEEL PIPE, 28' LONG
 A.R. STA. 53+44, 36" R.C.C.P., 26' LONG
 QUANTITIES INCLUDED IN "EARTH EXCAVATION".

EXISTING STRUCTURE NO. 013-3112

TWO SPAN STEEL MULTI-BEAM BRIDGE WITH
 CONCRETE DECK ON CLOSED CONCRETE ABUTMENTS
 AND WINGWALLS AND SOLID CONCRETE PIER;
 27'-0" BK.-BK. ABUTS.; 16.2' DECK WIDTH; SKEW = 0°

REMOVAL OF EXISTING STRUCTURES = 1 EACH

OVERHEAD POWER

AMEREN CIPS
 DAVID DITTER
 618-392-5635

BURIED CABLE

VERIZON NORTH, INC.
 JONNA FRICKE
 309-663-3422

ELZA & THELMA WELTY
 SW 1/4, SEC. 23, T. 3 N., R. 6 E., 3RD P.M.

DATE	2012/06/06
BY	S.A.
CHECKED	
DESIGNED	
IN CHARGE	
PROJECT	
PLAN & PROFILE	

