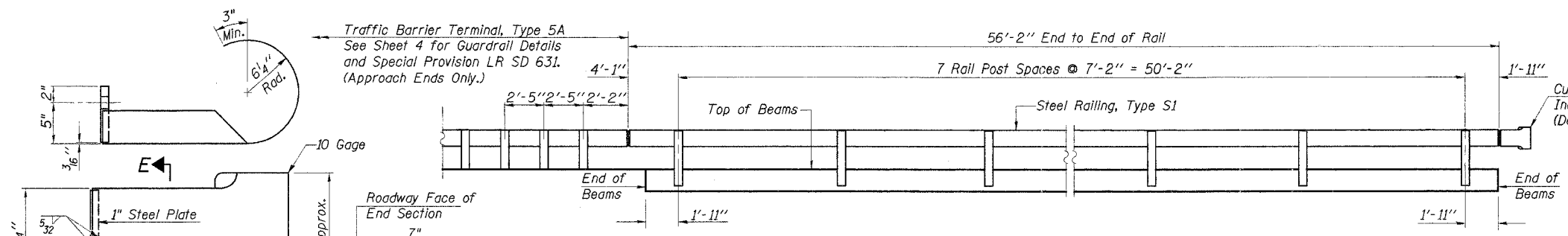
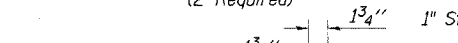


ROUTE NO.	SECTION	COUNTY	TOTAL SHEETS	SHEET NO.
T.R. 325	99-04128-00-BR	CLAY	13	7
ROAD DIST.	ILLINOIS	HARTER		
CONTRACT NO. 95523				

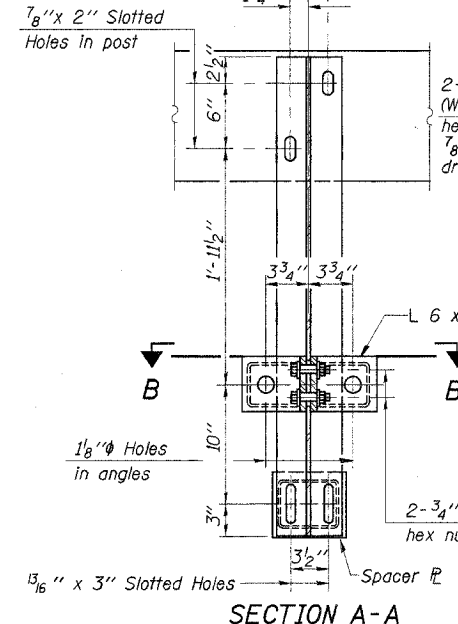


**ELEVATION**

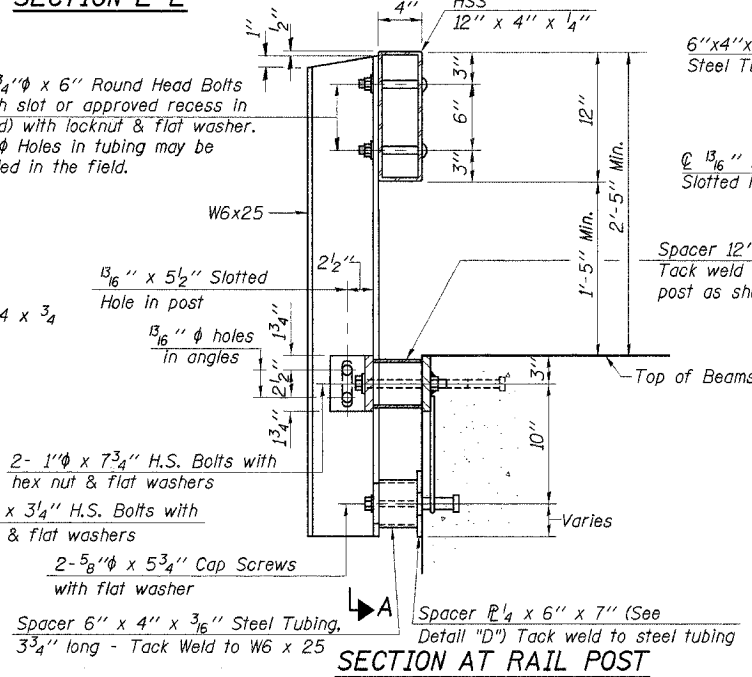
**CURLED END SECTION DETAILS**  
(2 Required)



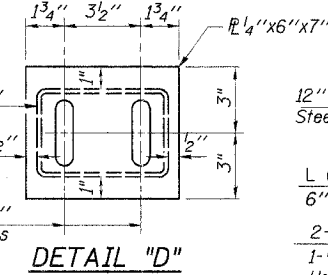
**SECTION E-E**



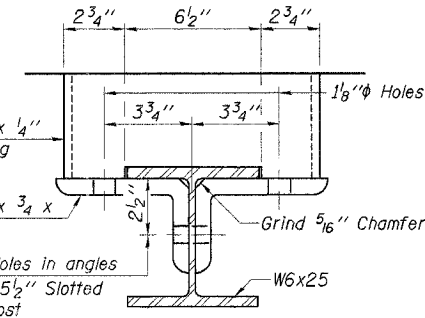
**SECTION A-A**



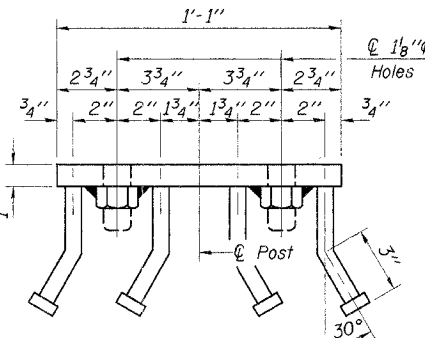
**SECTION AT RAIL POST**



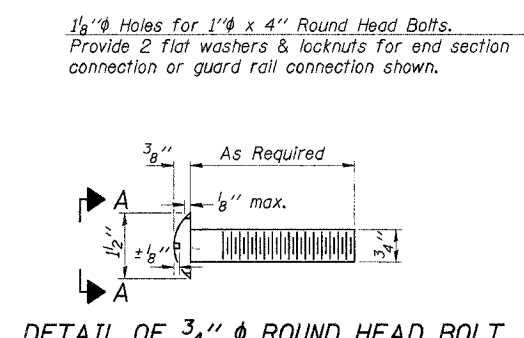
**DETAIL "D"**



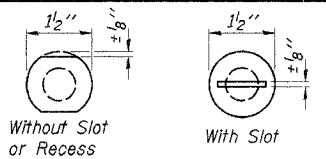
**SECTION B-B**



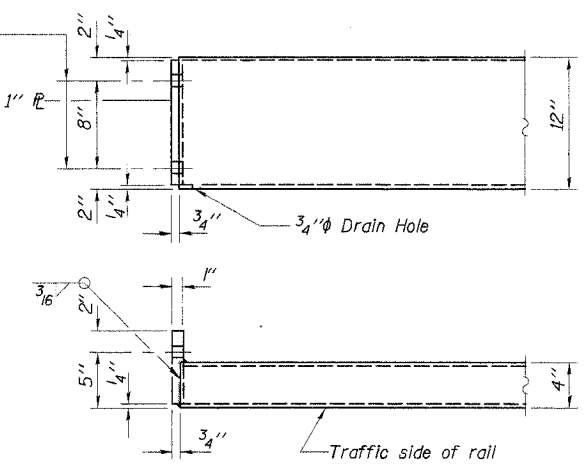
**VIEW C-C**



**DETAIL OF 3/4" ROUND HEAD BOLT**



**VIEW A-A**



**END OF RAIL DETAILS**

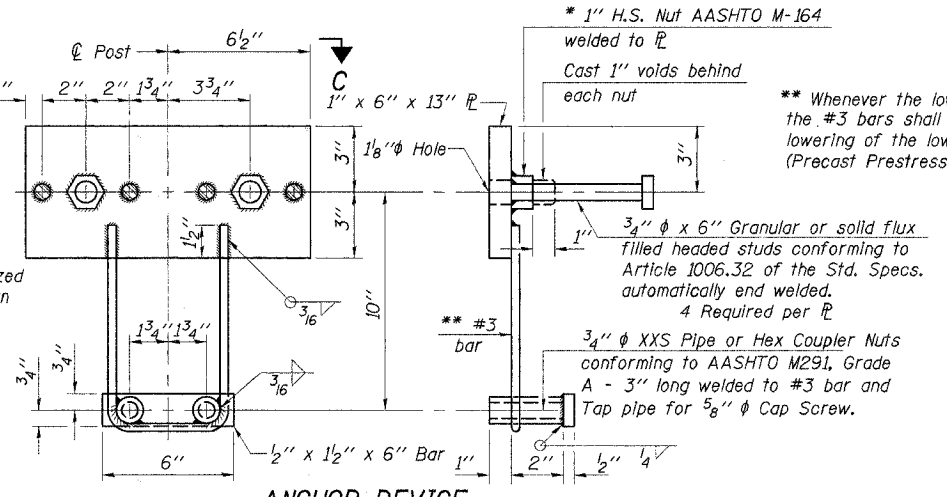
**BILL OF MATERIAL**

Item	Unit	Quantity
Steel Railing, Type S1	Foot	112

**1/4" SHIM PLATE**

Note: For multi-span bridges, sufficient 1/4" x 6" x 1'-4" galvanized steel shims shall be provided to align rail between adjacent spans. Cost incidental to Steel Railing.

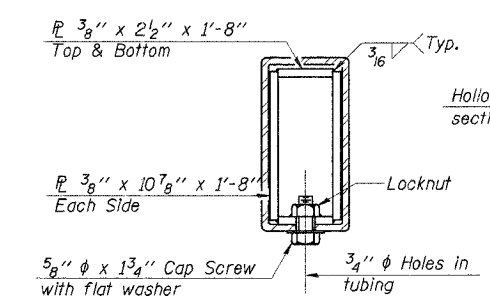
DESIGNED	F.J.S.
CHECKED	S.F.M.
DRAWN	S.A.P.
CHECKED	S.F.M.



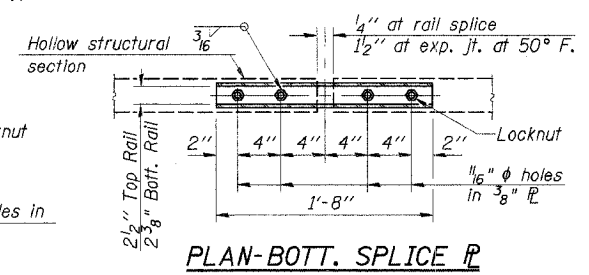
**ANCHOR DEVICE**

\* Threaded areas shall be plugged or blocked off during casting of beam.

\*\* Whenever the lower insert assemblies interfere with strand locations, the #3 bars shall be cut and adjusted in order to allow raising or lowering of the lower inserts. Maximum adjustment not to exceed 1/2". (Precast Prestressed Concrete Deck Beam Bridges Only)



**SECTIONS AT RAIL SPLICE**



**PLAN-BOTT. SPLICE TYPICAL**

**STEEL RAILING, TYPE S1**  
SECTION 99-04128-00-BR  
HARTER ROAD DISTRICT  
CLAY COUNTY  
STATION 50+00

4440 ASH GROVE SPRINGFIELD, IL 62711 (217) 789-8600 www.fehr-graham.com	<b>FEHR-GRAHAM &amp; ASSOCIATES, LLC</b> ENGINEERING AND SCIENCE CONSULTANTS MEMPHIS, INDIANAPOLIS, ROCKFORD, SPRINGFIELD	JOB NO.: 46861 FILE:RAIL_S1-5A-S.dgn DATE: 07/05/07
--	---	---