

F.A. RTE.	SECTION	COUNTY	TOTAL SHEETS	SHEET NO.
	06-00026-01-MS	MADISON	45	6

CALL JULIE TOLL FREE
 1-800-892-0123
 Joint Utility Locating Information for Excavators
 Call 48 hours before you dig!
 (Excluding Sat., Sun. & Holidays)

211 North Broadway
 St. Louis, Missouri 63102
 Ph: (314) 241-8188
 Fax: (314) 541-0125
KENNEDY
 ASSOCIATES, INC.



**PHASE 2
 LEWIS AND CLARK
 MEMORIAL TOWER**
 HARTFORD, ILLINOIS 62048

SHEET TITLE:
CONSTRUCTION PLAN

REV. NO.	DATE	REMARKS

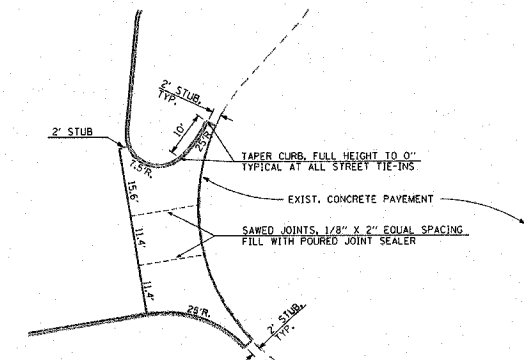
KENNEDY PROJECT NO
 10-02048

ISSUE DATE

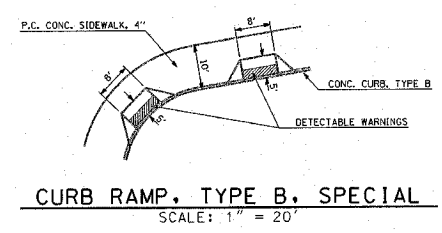
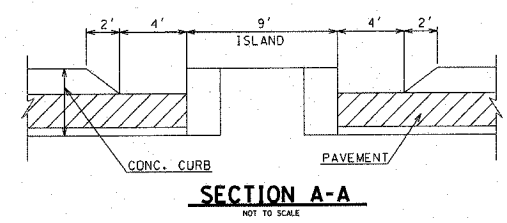
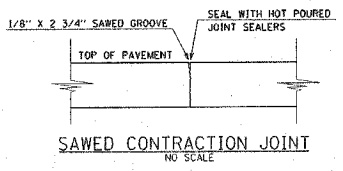
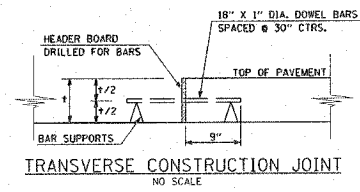
SHEET NO.

AC1-05

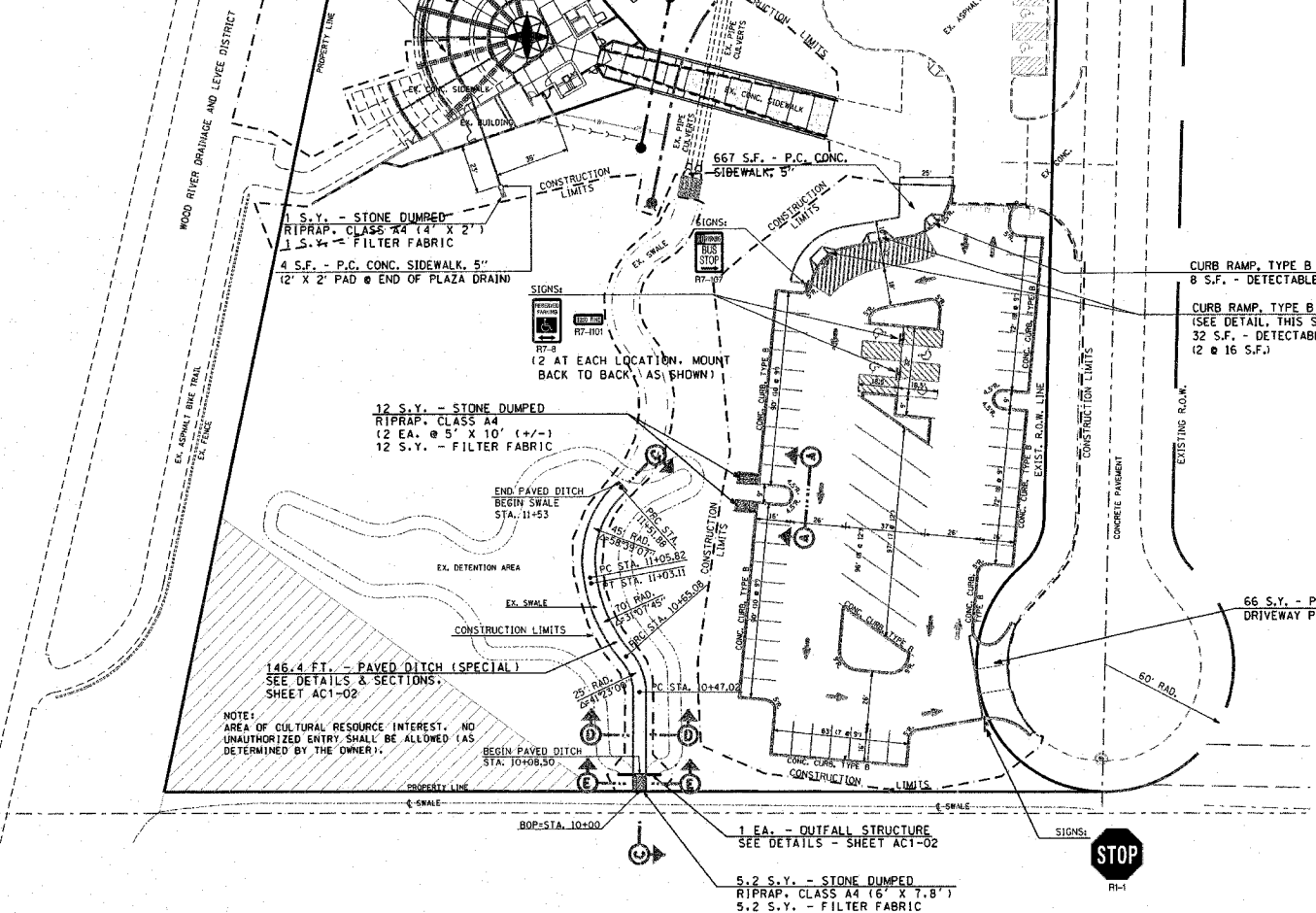
T.B.M. #1 - IRON PIN 365.1' NORTH OF CENTER OF CUL-DE-SAC AND 21.2' WEST OF CENTER LINE. ELEV. 437.18



ENTRANCE DETAIL
 SCALE: 1" = 20'



258 S.F. - CONCRETE PAVERS
 3664 S.F. - P.C. CONC. SIDEWALK, 5"
 (SEE PLAZA PAVING NOTE, THIS SHEET)
 REFER TO ARCHITECTURAL PLANS AND SPECIFICATIONS FOR MEASUREMENTS AND SLOPES OF PLAZA AREA.
 1 L. SUM - PLAZA DRAINAGE SYSTEM
 SEE SPECIAL PROVISIONS



GENERAL QUANTITIES:
 (THIS SHEET ONLY - UNLESS OTHERWISE SPECIFICALLY CALLED OUT)
 PAVEMENT - SEE SHEET "AC1-02" FOR DETAIL
 249 TONS - HOT-MIX ASPHALT SURFACE COURSE, MIX "C", N70
 249 TONS - HOT-MIX ASPHALT BINDER COURSE, IL-19.0, N70
 590 GAL. - BITUMINOUS MATERIALS (PRIME COAT)
 1,382 TONS - SUBBASE GRANULAR MATERIAL, TYPE A
 3,401 S.Y. - PROCESSING MODIFIED SOIL, 12"
 65 TONS - LIME
 1,012 FT. - CONCRETE CURB, TYPE B
 2,152 FT. - THERMOPLASTIC PAVEMENT MARKING - LINE 4"
 84 S.F. - THERMOPLASTIC PAVEMENT MARKING - LETTERS & SYMBOLS

SIGNING SCHEDULE (THIS SHEET ONLY)

SIGN	TYPE	SIZE	LETTERS/BACKGROUND	QUAN.	S.F.	POST
RT-1	STOP	30" x 30"	WHITE ON RED	1	6.25	12'
RT-8	RSRV'D PRK'G	12" x 18"	BLACK ON WHITE	4	6.00	24'
RT-101	FINE	12" x 6"	GREEN ON WHITE	4	2.00	-
RT-107	NO PARKING	18" x 12"	RED ON WHITE	1	1.50	12'
TOTAL				QUAN.	15.75	48'

PLAZA PAVING NOTE:
 ELEVATIONS SHOWN IN THE PLAZA AREA ARE FINISHED ELEVATIONS. DUE TO THE RELATIVELY FLAT EXPANSE OF THE PLAZA, ALL REQUIRED ELEVATIONS CANNOT BE SHOWN OR DETAILED. CONTRACTOR SHALL INSURE THAT THE COMPLETED SURFACE SLOPES TO ALL PLAZA TRENCH DRAINS. CONTRACTOR SHALL COORDINATE WITH ALL DISCIPLINES TO ELIMINATE UNDERGROUND CONFLICTS AND TO INSURE THAT THE FINAL FINISH OF THE SUBGRADE WILL BE CORRECT TO ACCEPT THE VARIOUS SURFACE MATERIALS AND CONTOURS OF THE FINISHED PLAZA AREA. PAVEMENT JOINTING SHALL BE AS SHOWN ON THE ARCHITECTURAL DRAWINGS AND AS DIRECTED BY THE ENGINEER. AT ANY CONSTRUCTION JOINT BETWEEN THIS AND FUTURE WORK, PLACE #4 EPOXY COATED REINFORCEMENT BARS 2' - 6" LONG AT 2' - 6" CENTERS AT 2" DEPTH.
 ADDITIONAL WORK CREATED BY THIS COORDINATION SHALL BE INCLUDED IN THE CONTRACT UNIT PRICE FOR P.C. CONCRETE SIDEWALK, 5".

UNDERGROUND FACILITIES, STRUCTURES, AND UTILITIES HAVE BEEN PLOTTED FROM AVAILABLE SURVEYS AND RECORDS AND, THEREFORE, THEIR LOCATIONS MUST BE CONSIDERED APPROXIMATE ONLY. THERE MAY BE OTHERS THE EXISTENCE OF WHICH IS AT PRESENT NOT KNOWN. VERIFICATION OF THE LOCATIONS OF UNDERGROUND UTILITIES, SHOWN OR NOT SHOWN, WILL BE THE RESPONSIBILITY OF THE CONSTRUCTION CONTRACTOR.