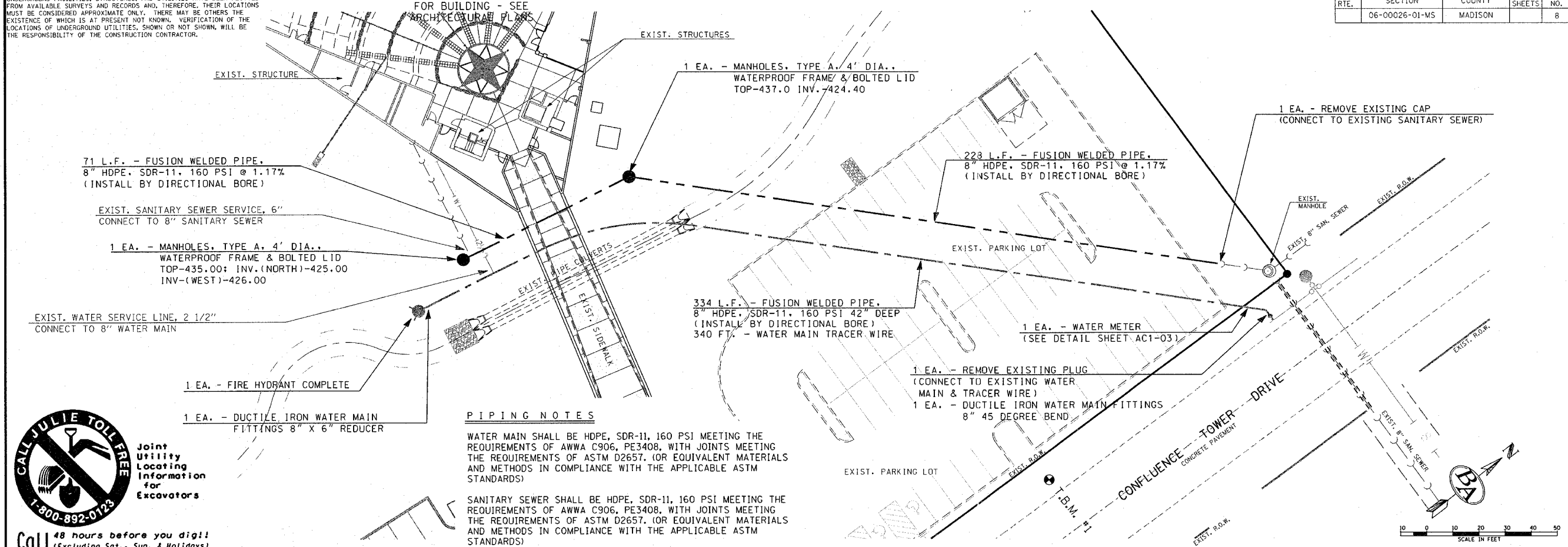


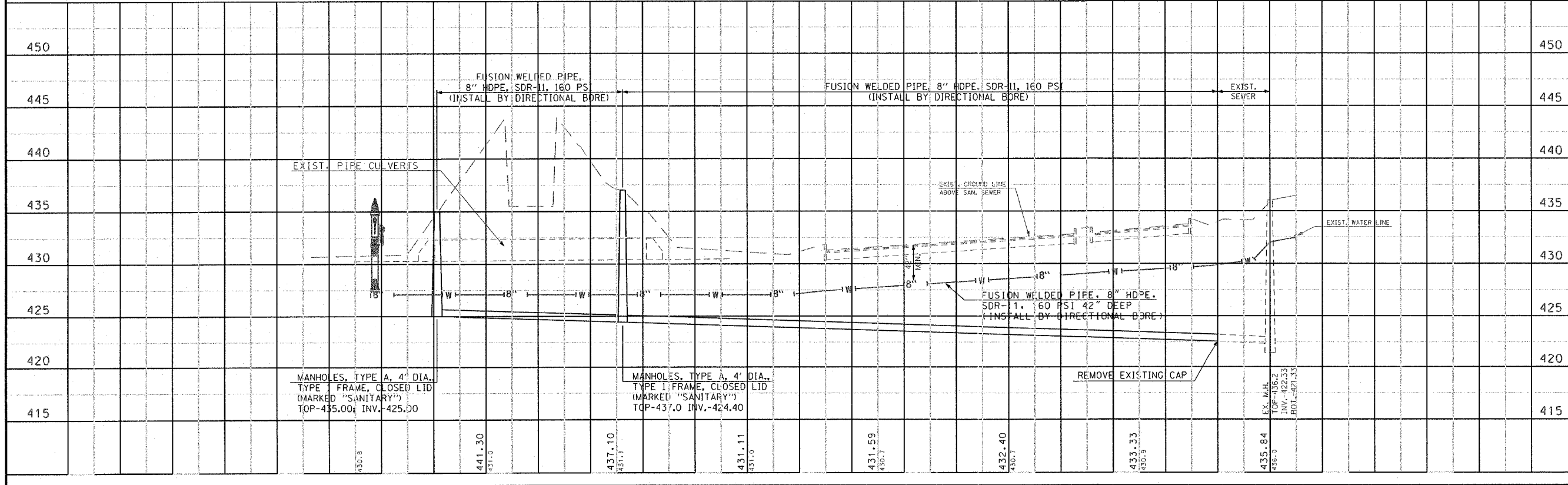
UNDERGROUND FACILITIES, STRUCTURES, AND UTILITIES HAVE BEEN PLOTTED FROM AVAILABLE SURVEYS AND RECORDS AND, THEREFORE, THEIR LOCATIONS MUST BE CONSIDERED APPROXIMATE ONLY. THERE MAY BE OTHERS THE EXISTENCE OF WHICH IS AT PRESENT NOT KNOWN. VERIFICATION OF THE LOCATIONS OF UNDERGROUND UTILITIES, SHOWN OR NOT SHOWN, WILL BE THE RESPONSIBILITY OF THE CONSTRUCTION CONTRACTOR.

F.A. RTE.	SECTION	COUNTY	TOTAL SHEETS	SHEET NO.
	06-00026-01-WS	MADISON		8



CALL JULIE TOLL FREE
1-800-892-0123
Joint Utility Locating Information for Excavators
Call 48 hours before you dig!!
(Excluding Sat., Sun. & Holidays)

PIPING NOTES
 WATER MAIN SHALL BE HDPE, SDR-11, 160 PSI MEETING THE REQUIREMENTS OF AWWA C906, PE3408, WITH JOINTS MEETING THE REQUIREMENTS OF ASTM D2657. (OR EQUIVALENT MATERIALS AND METHODS IN COMPLIANCE WITH THE APPLICABLE ASTM STANDARDS)
 SANITARY SEWER SHALL BE HDPE, SDR-11, 160 PSI MEETING THE REQUIREMENTS OF AWWA C906, PE3408, WITH JOINTS MEETING THE REQUIREMENTS OF ASTM D2657. (OR EQUIVALENT MATERIALS AND METHODS IN COMPLIANCE WITH THE APPLICABLE ASTM STANDARDS)



211 North Broadway
 Suite 1900
 Chicago, Illinois 60601
 Tel: (312) 241-0888
 Fax: (312) 241-0125
KENNEDY
 ARCHITECTS INCORPORATED



PHASE 2
LEWIS AND CLARK
MEMORIAL TOWER
 HARTFORD, ILLINOIS 62048

SHEET TITLE:
WATER LINE & SANITARY SEWER PLAN AND PROFILE

DATE	REVISIONS

KENNEDY PROJECT NO. 10-02048
ISSUE DATE
SHEET NO. AC1-07

FINAL112109_060218WATER.dwg T042007 2:50:17 PM