

F.A. RTE.	SECTION	COUNTY	TOTAL SHEETS	SHEET NO.
	06-00026-01-MS	MADISON	43	16
FEDERAL AID PROJECT				

211 N. Broadway
Suite 1000
St. Louis, MO 63102
Phone (314) 241-0100
Fax (314) 241-0125

KAI

**PHASE 2A
LEWIS AND CLARK MEMORIAL TOWER
VILLAGE OF HARTFORD, ILLINOIS
HARTFORD, ILLINOIS 62049**

SHEET TITLE:
**REFLECTED CEILING
PLAN**

REV. NO.	DATE	REMARKS
1	11/29/06	100% REV.

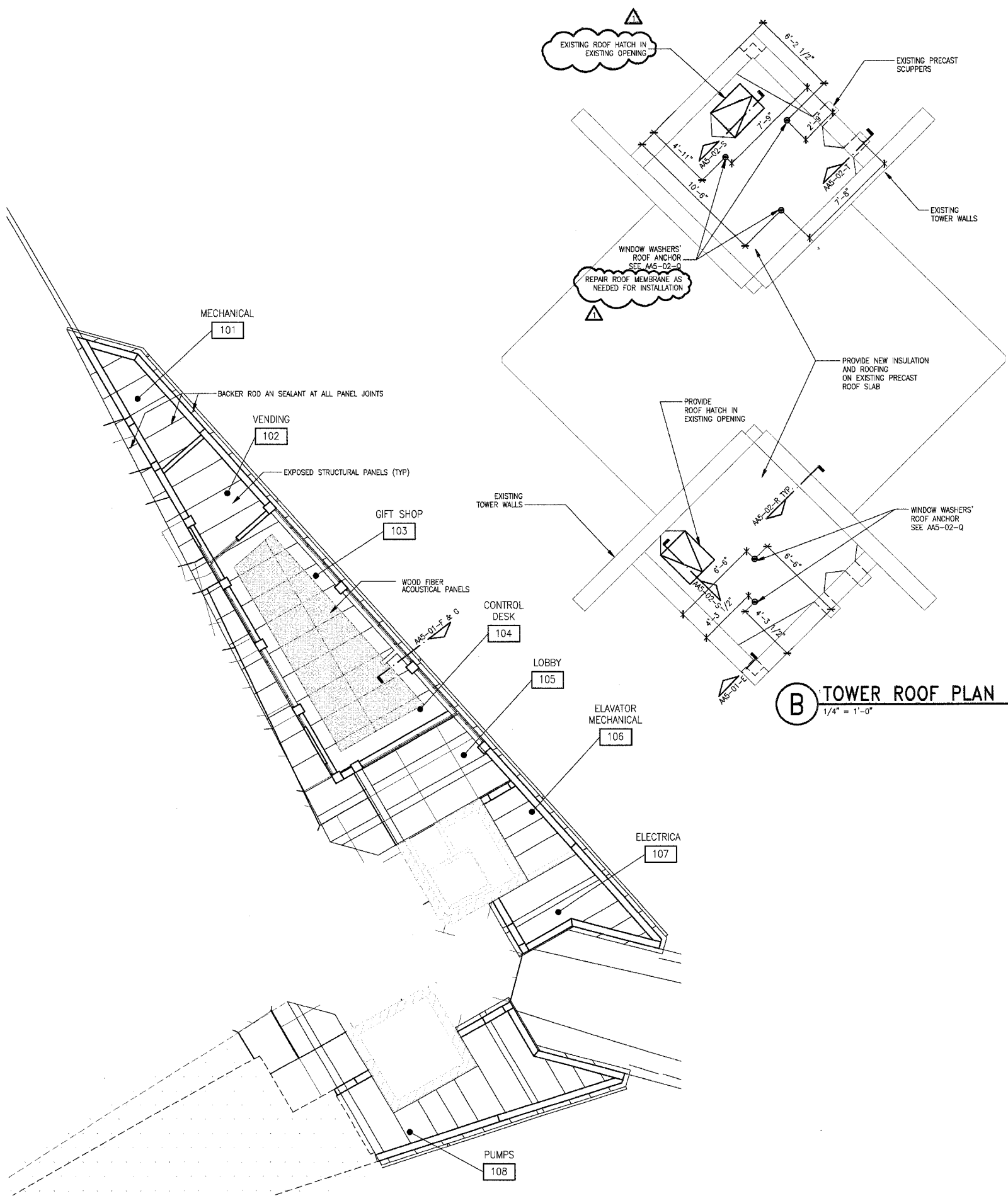
KENNEDY PROJECT NO
KAI# 10-02048

ISSUE DATE
12-JULY-05

SHEET NO

AA3-02

© 2005 KENNEDY ASSOCIATES INCORPORATED



(A) REFLECTED CEILING PLAN
1/8" = 1'-0"



(B) TOWER ROOF PLAN
1/4" = 1'-0"

(C) SECTION THRU SOUTH TOWER
1" = 10'-0"

(D) SECTION THRU NORTH TOWER
1" = 10'-0"

Drawing Stamp Information