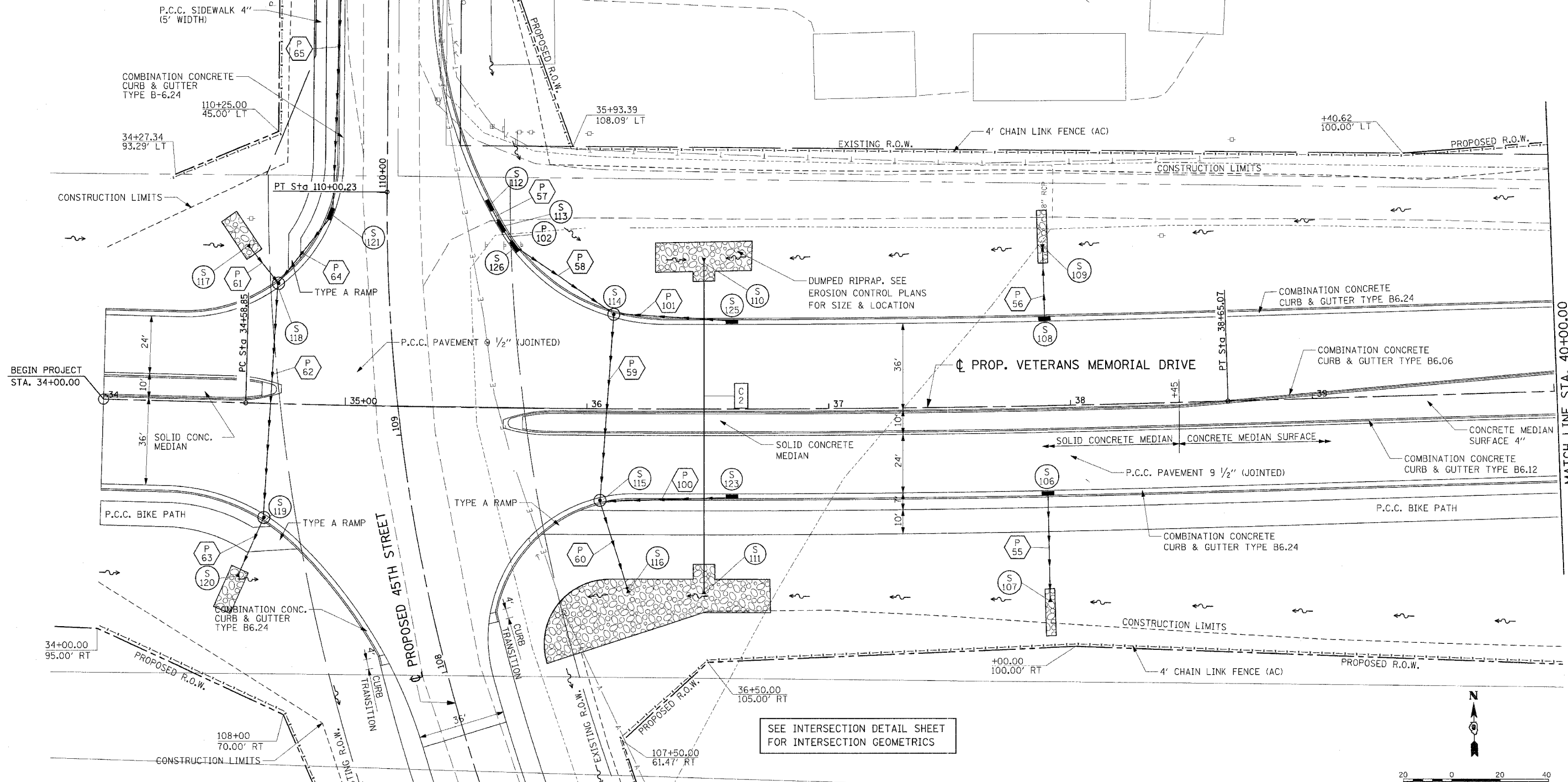


P.A.I. RTE.	SECTION	COUNTY	TOTAL SHEETS	SHEET NO.
57/64	(41-3)HBK	JEFFERSON	518	088
STA. 34+00.00		TO STA. 40+00.00		
FED. ROAD DIST. NO.		ILLINOIS FED. AID PROJECT		
CONTRACT NO. 98963				

EDWARD &
ANTHONY
GUINZY

KENNETH DALE MOORE

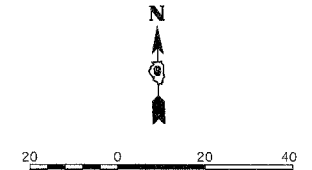
ZORA HODGE
ESTATE



Copyright Hanson Professional Services Inc. 2007
HANSON
Hanson Professional Services Inc.

03/21/2007, 08:01 AM
I:\98\jobs\98s\20\90\Road\Sheet\c-10\ref.dgn

LAYOUT	RLT	02/28/04
DRAWN	JED	04/12/04
REVIEWED	MTM	03/22/07



REVISIONS	
NAME	DATE

ILLINOIS DEPARTMENT OF TRANSPORTATION
ROADWAY PLAN
STA. 34+00.00 TO STA. 40+00.00
VETERANS MEMORIAL DRIVE
INTERCHANGE
SECTION (41-3)HBK
SCALE: 1"=20'
DATE 3-22-07
DRAWN BY RLT
CHECKED BY MTM

SEE INTERSECTION DETAIL SHEET
FOR INTERSECTION GEOMETRICS