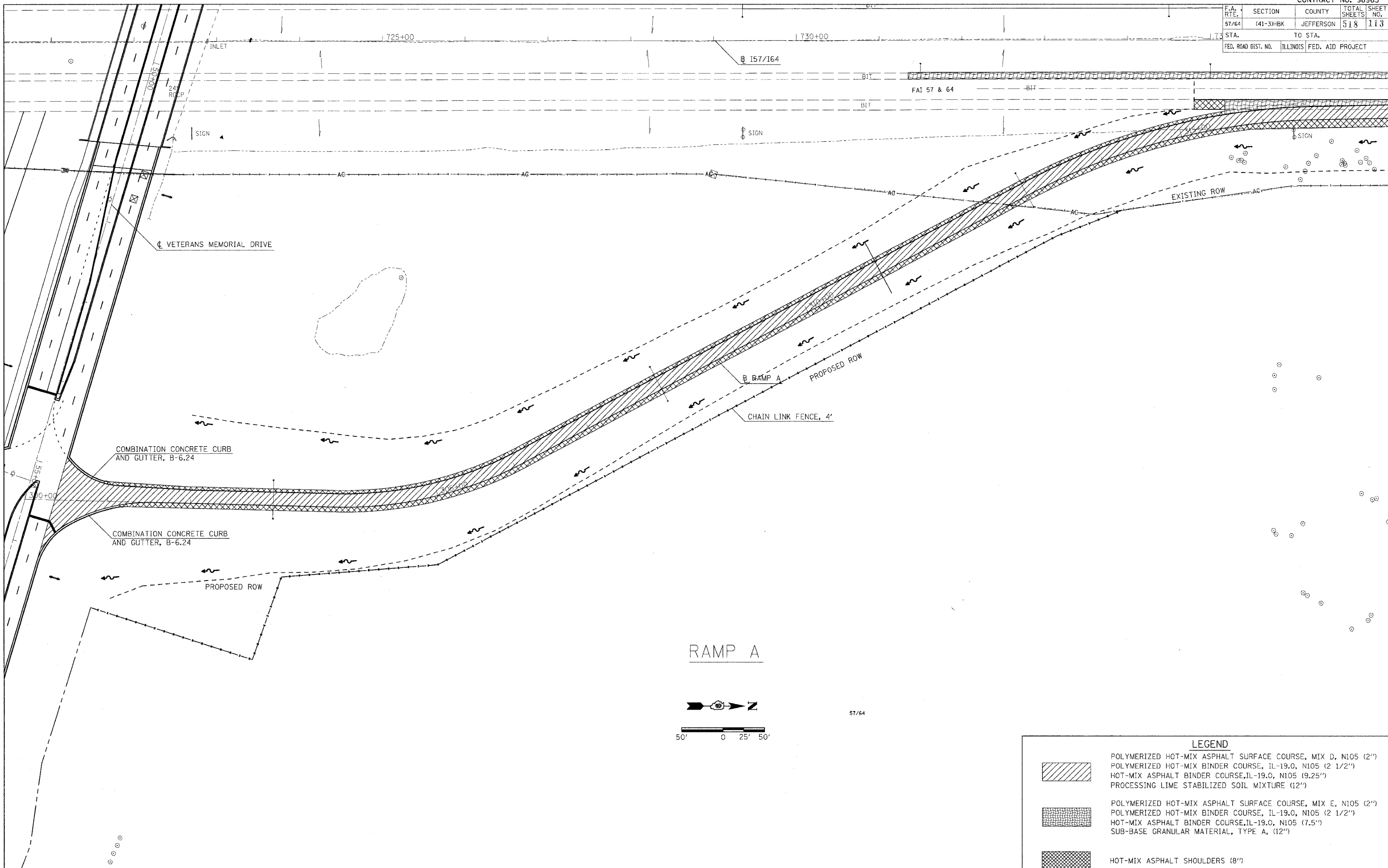


F.A. RTE.	SECTION	COUNTY	TOTAL SHEETS	SHEET NO.
57/64	(41-3)HBK	JEFFERSON	518	113
STA.		TO STA.		
FED. ROAD DIST. NO.		ILLINOIS FED. AID PROJECT		



PLOT DATE = 83-12-28 07:06:19 AM
 PLOT FILE = H:\projects\98963\113\DOT\98963-113-113.dwg
 PLOT SCALE = 1/4" = 1'-0"
 PLOT USER = Kex

LEGEND	
	POLYMERIZED HOT-MIX ASPHALT SURFACE COURSE, MIX D, N105 (2") POLYMERIZED HOT-MIX BINDER COURSE, IL-19.0, N105 (2 1/2") HOT-MIX ASPHALT BINDER COURSE, IL-19.0, N105 (9.25") PROCESSING LIME STABILIZED SOIL MIXTURE (12")
	POLYMERIZED HOT-MIX ASPHALT SURFACE COURSE, MIX E, N105 (2") POLYMERIZED HOT-MIX BINDER COURSE, IL-19.0, N105 (2 1/2") HOT-MIX ASPHALT BINDER COURSE, IL-19.0, N105 (7.5") SUB-BASE GRANULAR MATERIAL, TYPE A, (12")
	HOT-MIX ASPHALT SHOULDERS (8")