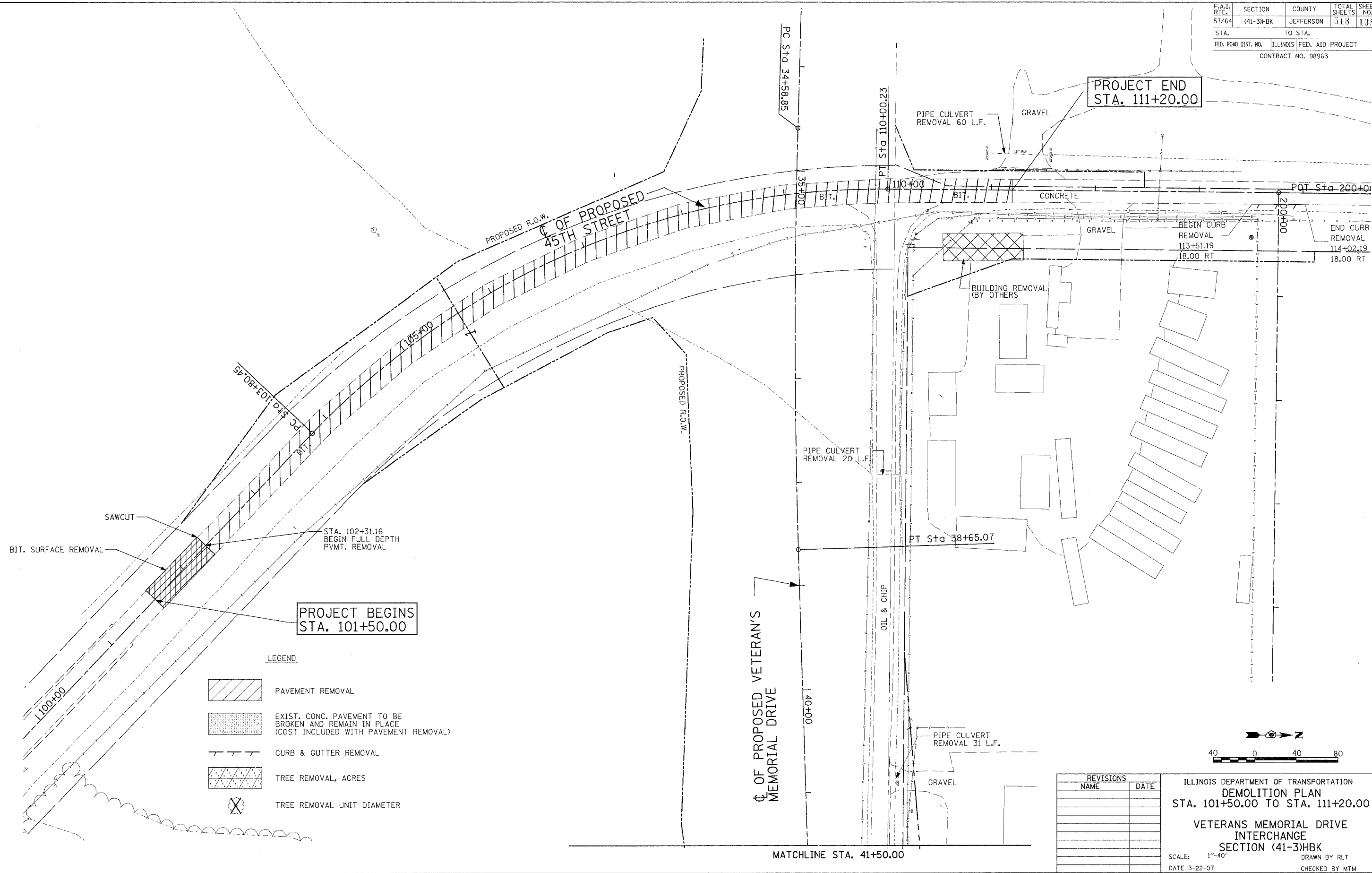


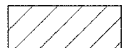

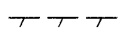
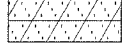

F.A.I. RT#	SECTION	COUNTY	TOTAL SHEETS	SHEET NO.
57/64	(41-3)HBK	JEFFERSON	118	133
STA.	TO STA.			
FED. ROAD DIST. NO.	ILLINOIS	FED. AID PROJECT		
CONTRACT NO. 98963				

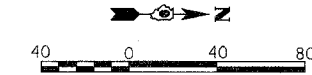
PROJECT END  
STA. 111+20.00



PROJECT BEGINS  
STA. 101+50.00

LEGEND

-  PAVEMENT REMOVAL
-  EXIST. CONC. PAVEMENT TO BE BROKEN AND REMAIN IN PLACE (COST INCLUDED WITH PAVEMENT REMOVAL)
-  CURB & GUTTER REMOVAL
-  TREE REMOVAL, ACRES
-  TREE REMOVAL UNIT DIAMETER



REVISIONS	
NAME	DATE

ILLINOIS DEPARTMENT OF TRANSPORTATION  
**DEMOLITION PLAN**  
 STA. 101+50.00 TO STA. 111+20.00  
**VETERANS MEMORIAL DRIVE INTERCHANGE**  
 SECTION (41-3)HBK  
 SCALE: 1"=40'  
 DATE 3-22-07  
 DRAWN BY RLT  
 CHECKED BY MTM

Copyright, Hanson Professional Services, Inc. 2007  
**HANSON**  
 Hanson Professional Services Inc.

03/22/2007, 03:04 PM  
 J:\98 Jobs\98963\Road\Sheet\c-101-demo.dgn

LAYOUT	RLT	02/26/04
DRAWN	WEO	04/12/04
REVIEWED	MTM	03/22/07