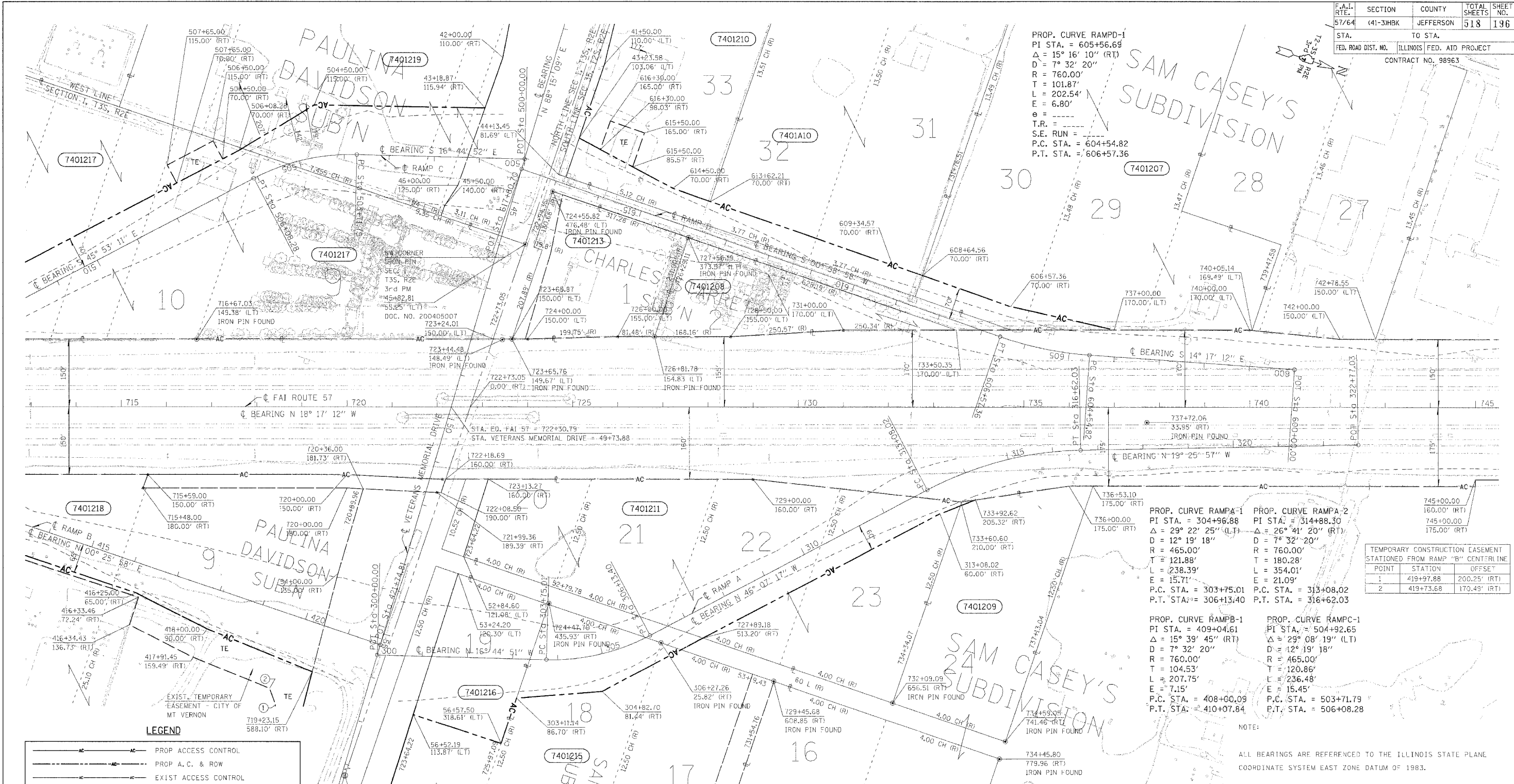


F.A.I. RTE. NO.	SECTION	COUNTY	TOTAL SHEETS	SHEET NO.
57/64	(41-3)HBK	JEFFERSON	518	196
STA.	TO STA.			
FED. ROAD DIST. NO.	ILLINOIS FED. AID PROJECT			
	CONTRACT NO. 98963			

PROP. CURVE RAMPA-1  
 PI STA. = 605+56.69  
 $\Delta = 15^\circ 16' 10''$  (RT)  
 $D = 7^\circ 32' 20''$   
 $R = 760.00'$   
 $T = 101.87'$   
 $L = 202.54'$   
 $E = 6.80'$   
 $e =$   
 S.E. RUN =  
 P.C. STA. = 604+54.82  
 P.T. STA. = 606+57.36

SAM CASEY'S  
 SUBDIVISION



PROP. CURVE RAMPA-1  
 PI STA. = 304+96.88  
 $\Delta = 29^\circ 22' 25''$  (LT)  
 $D = 12^\circ 19' 18''$   
 $R = 465.00'$   
 $T = 121.88'$   
 $L = 238.39'$   
 $E = 15.71'$   
 P.C. STA. = 303+75.01  
 P.T. STA. = 306+13.40

PROP. CURVE RAMPA-2  
 PI STA. = 314+88.30  
 $\Delta = 26^\circ 41' 20''$  (RT)  
 $D = 7^\circ 32' 20''$   
 $R = 760.00'$   
 $T = 180.28'$   
 $L = 354.01'$   
 $E = 21.09'$   
 P.C. STA. = 313+08.02  
 P.T. STA. = 316+62.03

POINT	STATION	OFFSET
1	419+97.88	200.25' (RT)
2	419+73.68	170.49' (RT)

PROP. CURVE RAMPB-1  
 PI STA. = 409+04.61  
 $\Delta = 15^\circ 39' 45''$  (RT)  
 $D = 7^\circ 32' 20''$   
 $R = 760.00'$   
 $T = 104.53'$   
 $L = 207.75'$   
 $E = 7.15'$   
 P.C. STA. = 408+00.09  
 P.T. STA. = 410+07.84

PROP. CURVE RAMPC-1  
 PI STA. = 504+92.65  
 $\Delta = 29^\circ 08' 19''$  (LT)  
 $D = 12^\circ 19' 18''$   
 $R = 465.00'$   
 $T = 120.86'$   
 $L = 236.48'$   
 $E = 15.45'$   
 P.C. STA. = 503+71.79  
 P.T. STA. = 506+08.28

NOTE:  
 ALL BEARINGS ARE REFERENCED TO THE ILLINOIS STATE PLANE COORDINATE SYSTEM EAST ZONE DATUM OF 1983.

TEMPORARY EASEMENTS ARE NEEDED AS A WORK AREA.

**LEGEND**

	PROP ACCESS CONTROL
	PROP A.C. & ROW
	EXIST ACCESS CONTROL
	EXIST A.C. & ROW
	EXIST ROW
	STONE
	CHISELED "X" SECTION CORNER
	BRASS MONUMENT
	IRON PIN
	COTTON GIN SPINDLE
	TEMPORARY CONSTRUCTION EASEMENT
	RECORD DISTANCE
	CONSTRUCTION LIMITS

SOUTHEAST CORNER  
 CHISELED "X" IN BRASS MONUMENT  
 SECTION 35  
 T2S, R2E  
 3rd PM  
 718+79.62  
 1158.03 (RT)  
 DOCUMENT RECORD  
 CAB. 3, DRAWER 10  
 INST. 1785

PARCEL	OWNER	AREA TAKEN		EASEMENT	ACCESS CONTROL	AREA REM	INST	RECORDED		EXCESS	
		ADD	EXIST					MICRO FILM NO	DATE	AREA	SOLD
7401207	R & K LAND COMPANY	0.377			442.36 LF	10.489					
7401208	CHARLES CANVAS SHOP, INC.	1.652			0	0.000					
7401209	BONAN BROTHERS PROPERTIES, L	0.003			35.83 LF	3.262					
7401210	KENNETH DALE MOORE	0.489		0.134	1283.40 LF	5.962					
7401211	JAMES M. DYCUS	5.487			642.08 LF	2.395					
7401213	JACK WILSON	2.000			0	0.000					
7401215	B & J FAMILY LIMITED	0.955			1376.15 LF	11.000					
7401216	CITY OF MT. VERNON	1.562			888.27 LF	2.338					
7401217	JR'S MOBILE HOME SALES	8.324		0.119	966.33 LF	9.250					
7401218	ILLINOIS POWER CO. AKA AMERE	5.755		0.675	2,004.90 LF	27.284					
7401219	ZOHA HODGE ESTATE	1.825				45.839					
	TRACT 1				1,444.95 LF						
	TRACT 2				523.53 LF						
7401A10	KENNETH DALE MOORE	0.582			497.66 LF	9.290					

**RIGHT OF WAY PLANS**  
**FAI ROUTE 57**

PROJECT SECTION (41-3)HBK

STATION 713+00 TO STATION 745+00

COUNTY JEFFERSON

SCALE 100' SHEET 4 OF 7

NOTE: ALL AREAS ARE IN ACRES UNLESS OTHERWISE NOTED.

DATE: 11/11/04  
 DRAWN BY: J. J. JONES  
 CHECKED BY: J. J. JONES  
 INSPECTED BY: J. J. JONES

JOB NO. R 97-001-04