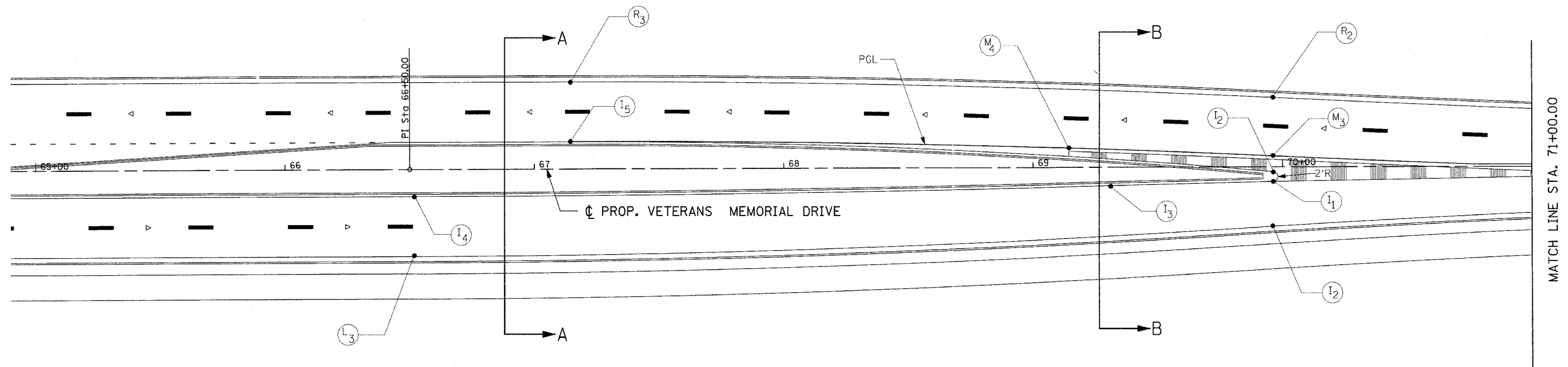
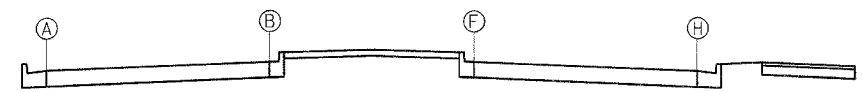


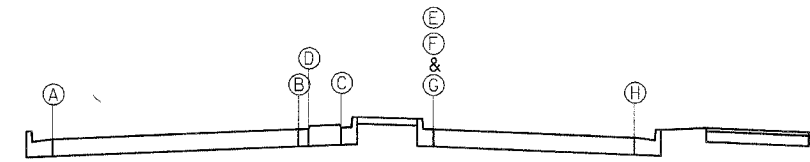
F.A.I. RTE.	SECTION	COUNTY	TOTAL SHEETS	SHEET NO.
57/64	(41-3)HBK	JEFFERSON	518	204
STA. 65+00.00		TO STA. 71+00.00		
FED. ROAD DIST. NO.		ILLINOIS FED. AID PROJECT		
CONTRACT NO. 98963				



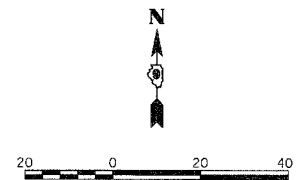
STATION	OFFSETS LEFT OF CL								OFFSETS RIGHT OF CL								
	LT. OEOP (A)		LT. PGL (B)		ISLAND (C)		MEDIAN (D)		MEDIAN (E)		ISLAND (F)		RT. PGL (G)		RT. OEOP (H)		
	OFF	ELEV	OFF	ELEV	OFF	ELEV	OFF	ELEV	OFF	ELEV	OFF	ELEV	OFF	ELEV	OFF	ELEV	
L <sub>3</sub> I <sub>4</sub>	66+51.71	35.00'	502.55	11.00'	503.03	11.00'	503.03	-	-	-	-	11.00'	503.03	11.00'	503.03	35.00'	502.55
	66+67.34	35.00'	502.81	11.00'	503.29	11.00'	503.29	-	-	-	-	10.99'	503.29	10.99'	503.29	34.98'	502.81
	66+90.34	35.00'	503.20	11.00'	503.68	11.00'	503.68	-	-	-	-	10.93'	503.68	10.93'	503.68	34.86'	503.20
I <sub>5</sub> R <sub>3</sub>	67+14.36	35+00'	503.60	11.00'	504.08	11.00'	504.08	-	-	-	-	10.82'	504.08	10.82'	504.08	34.63'	503.60
	67+17.34	35+00'	503.65	11.00'	504.13	11.00'	504.13	-	-	-	-	10.81'	504.13	10.81'	504.13	34.60'	503.65
	67+40.34	34.94'	504.03	10.94'	504.51	10.89'	504.51	-	-	-	-	10.65'	504.51	10.65'	504.51	34.27'	504.04
	67+65.34	34.77'	504.45	10.77'	504.93	10.58'	504.93	-	-	-	-	10.42'	504.93	10.42'	504.93	33.80'	504.46
	67+90.34	34.49'	504.87	10.49'	505.35	10.06'	505.35	-	-	-	-	10.14'	505.35	10.14'	505.35	33.21'	504.89
	68+15.34	34.09'	505.28	10.09'	505.76	9.33'	505.78	-	-	-	-	9.80'	505.76	9.80'	505.76	32.50'	505.31
	68+40.34	33.59'	505.70	9.59'	506.18	8.41'	506.20	-	-	-	-	9.41'	506.18	9.41'	506.18	31.68'	505.73
	68+65.34	32.98'	506.12	8.98'	506.60	7.27'	506.63	-	-	-	-	8.96'	506.60	8.96'	506.60	30.75'	506.16
	68+90.34	32.25'	506.54	8.25'	507.02	5.94'	507.07	-	-	-	-	8.45'	507.02	8.45'	507.02	29.69'	506.60
M <sub>4</sub>	69+14.33	31.45'	506.94	7.45'	507.42	4.40'	507.48	6.48'	507.50	-	-	7.91'	507.42	7.91'	507.42	28.58'	507.01
	69+15.34	31.42'	506.94	6.84'	507.43	4.40'	507.48	6.44'	507.49	-	-	7.89'	507.43	7.89'	507.43	28.53'	507.02
I <sub>3</sub>	69+30.99	30.84'	507.20	6.47'	507.69	3.33'	507.75	5.86'	507.77	-	-	7.51'	507.69	7.51'	507.69	22.73'	507.29
	69+40.34	30.47'	507.35	5.41'	507.85	2.65'	507.91	5.50'	507.90	-	-	7.28'	507.85	7.31'	507.85	27.24'	507.45
	69+65.34	29.41'	507.77	4.25'	508.27	0.69'	508.34	4.45'	508.34	-	-	6.68'	508.27	6.74'	508.27	25.84'	507.89
	69+90.34	28.25'	508.19	3.97'	508.68	-1.47'	508.79	3.29'	508.80	-	-	6.13'	508.68	6.14'	508.68	24.32'	508.32
L <sub>2</sub> I <sub>1</sub> I <sub>2</sub> M <sub>3</sub> R <sub>2</sub>	69+96.18	27.97'	508.28	3.07'	508.78	-2.00'	508.88	3.00'	508.88	6.00	508.78	6.00'	508.78	6.00'	508.78	23.96'	508.42
	70+15.34	27.08'	508.60	1.94'	509.10	-	-	2.06'	509.10	5.70'	509.10	-	-	5.70'	509.10	22.82'	508.76
	70+40.34	25.95'	509.02	0.84'	509.52	-	-	0.88'	509.52	5.28'	509.52	-	-	5.28'	509.52	21.43'	509.20
	70+65.34	24.88'	509.44	0.00'	509.94	-	-	-0.25'	509.95	4.82'	509.94	-	-	4.82'	509.94	20.15'	509.63
	70+90.34	23.85'	509.87	0.00'	510.35	-	-	-1.34'	510.38	4.33'	510.35	-	-	4.33'	510.35	18.97'	510.06



SECTION A-A



SECTION B-B



REVISIONS	
NAME	DATE

ILLINOIS DEPARTMENT OF TRANSPORTATION  
**CHANNELIZATION DETAIL**  
**STA. 65+00.00 TO STA. 71+00.00**  
**VETERANS MEMORIAL DRIVE**  
**INTERCHANGE**  
**SECTION (41-3)HBK**  
 SCALE: 1"=20'  
 DATE 3-22-07  
 DRAWN BY RL  
 CHECKED BY MTM

Copyright Hanson Professional Services Inc. 2007  
**HANSON**  
 Hanson Professional Services Inc.

03/21/2007 09:40 AM  
 I:\98963\98963\2007\Drawn\Drawn\Sheet\60\Channel.dwg

DESIGNED	RL	02/26/04
DRAWN	JG	04/12/04
REVIEWED	MTM	03/22/07