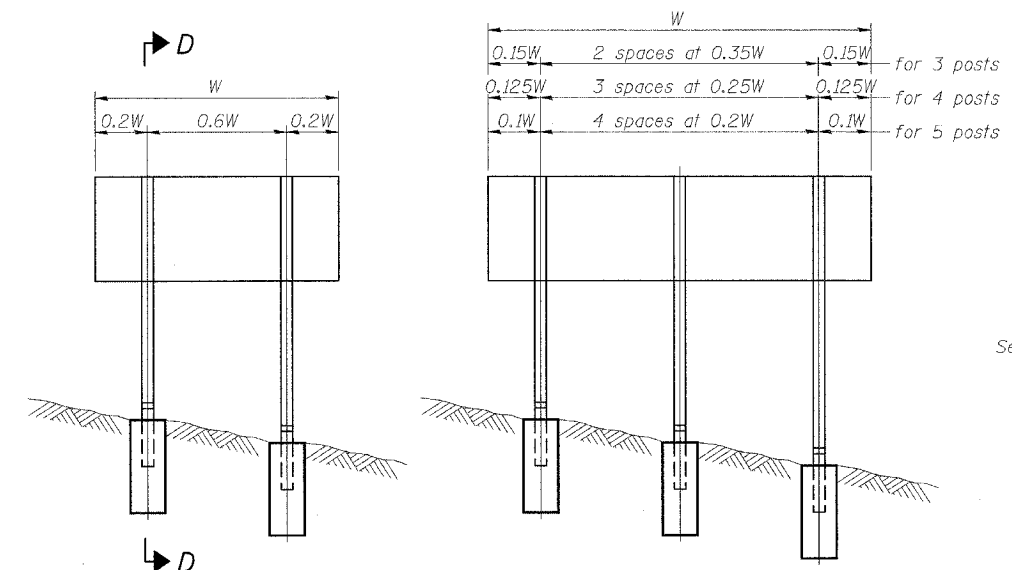
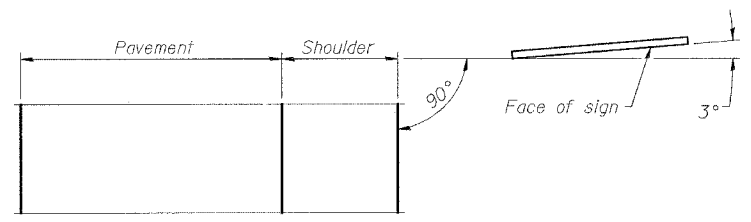


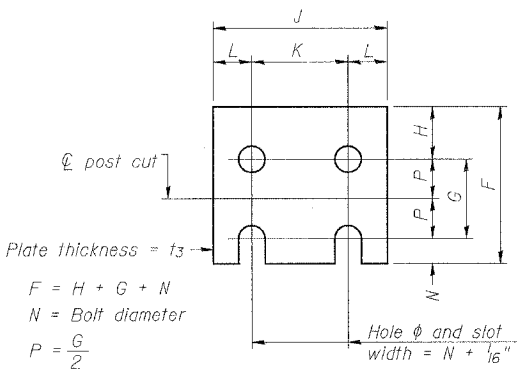
CONTRACT NO. 98963	
F.A.I. RTE. 57/64	SECTION 141-31BK
COUNTY JEFFERSON	TOTAL SHEETS 264
STA.	TO STA.
FED. ROAD DIST. NO.	ILLINOIS FED. AID PROJECT



ELEVATION

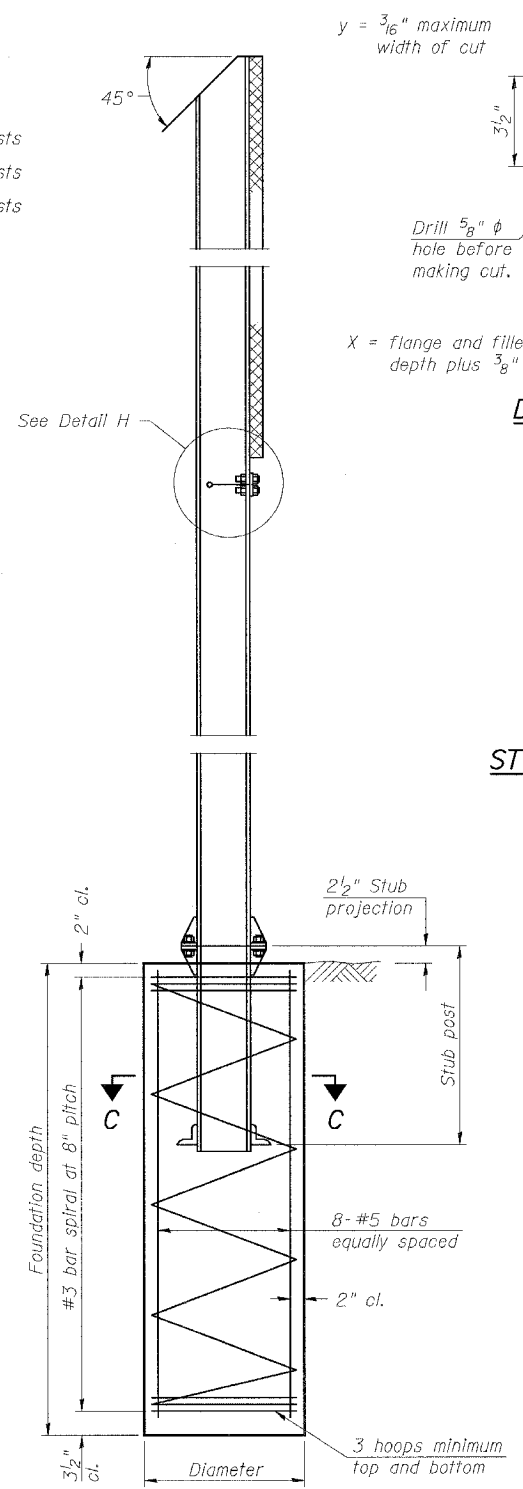


LOCATION SKETCH

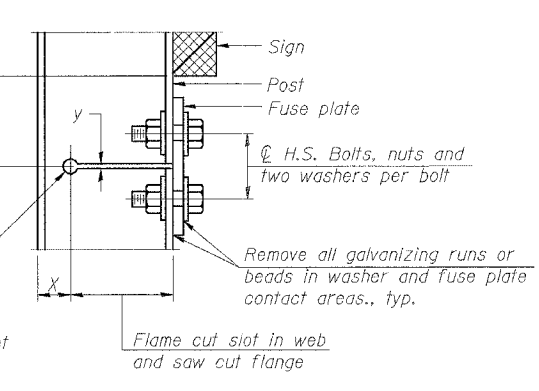


FUSE PLATE DETAIL
(Install with notches down.)

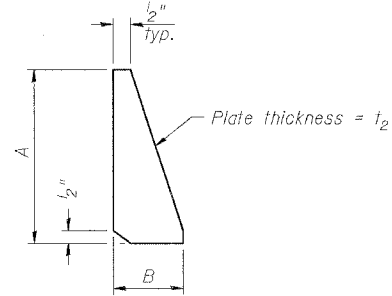
FUSE PLATE DATA		
N = Bolt Diameter	G	H
1/2"	2"	1 1/8"
5/8"	2 1/4"	1 1/4"
3/4"	2 1/2"	1 3/8"
7/8"	2 3/4"	1 1/2"
1"	3"	1 5/8"
1 1/8"	3 1/4"	1 3/4"



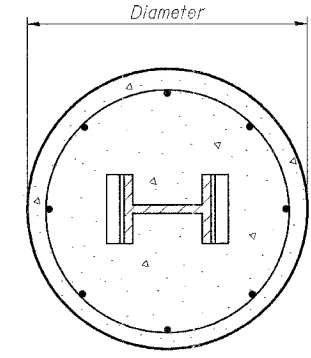
SECTION D-D



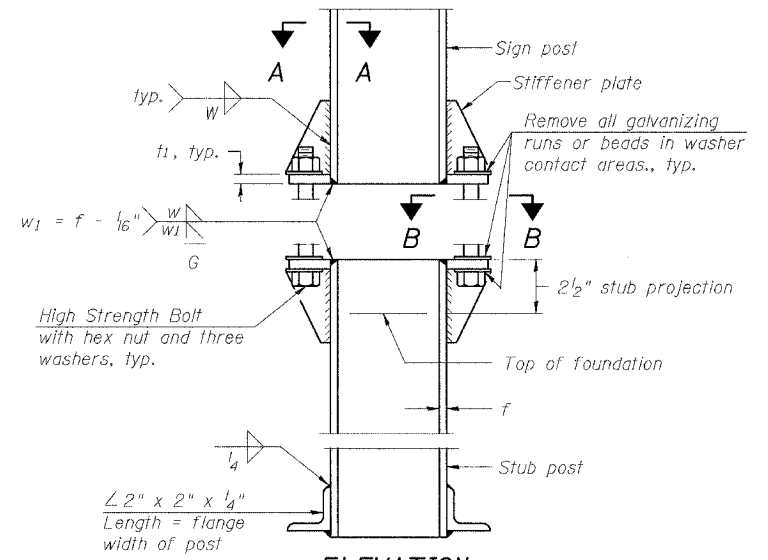
DETAIL H



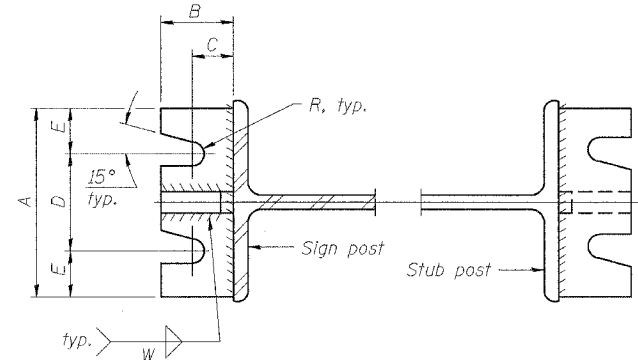
STIFFENER PLATE DETAIL
(See table for dimensions.)



SECTION C-C

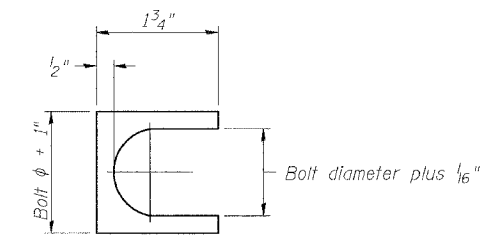


ELEVATION SIGN POST & STUB POST



SECTION A-A

SECTION B-B



SHIM DETAIL

GENERAL NOTES

Posts shall be plumbed by using shims with post-to-stub post connection bolts snug tight only. Final tightening of all High Strength Bolts shall be in accordance with Article 727.05 and threads at the junction of the bolt and nut shall be burred or center punched to prevent the nut from loosening.

LOADING: 80 m.p.h. wind with 30% gust factor, normal to sign.

DESIGN STRESSES:
Structural steel - 20,000 p.s.i.
Reinforcing steel - 20,000 p.s.i.
Concrete - 1,400 p.s.i.
Footing soil pressure - 2,000 p.s.f.

After fabrication, the post, fuse plate and upper 6", min. of the stub post shall be hot-dip galvanized in accordance with AASHTO M111. All bolts, nuts and washers shall be hot-dip galvanized in accordance with AASHTO M232.

Work this sheet with Base Sheet BAW-A-2.

REVISIONS	
NAME	DATE

(Sheet 1 of 2)

ILLINOIS DEPARTMENT OF TRANSPORTATION

BREAK-AWAY WIDE FLANGE STEEL SIGN POST DETAILS

SCALE: VERT. NONE
HORIZ. DATE

DRAWN BY
CHECKED BY

PLOT DATE = 5/11/2007
FILE NAME = c:\pcc\projects\final\consult\stent\vtamand\vtamand-ve\vdst - supplied - info\p025898spn-dgn
PLOT SCALE = 50.00000 / IN.
USER NAME = huse13cf

NUMBER	REVISION	DATE