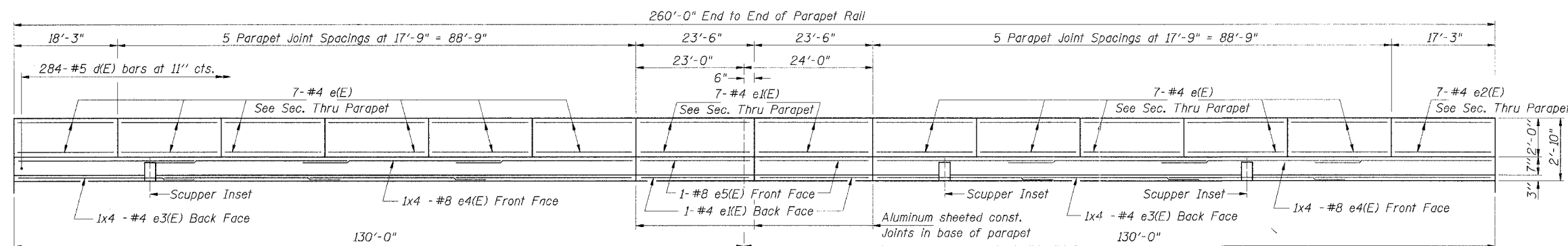


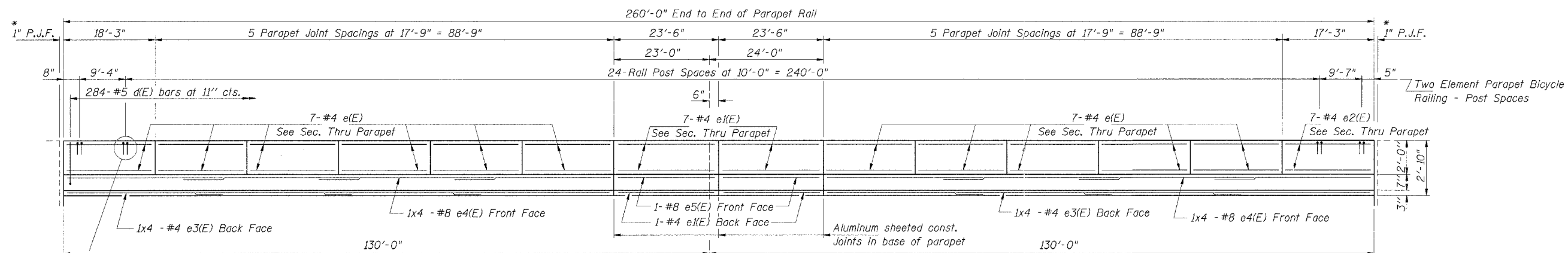
| | | | | |
|---------------------|-----------|------------------|--------------------|-----------|
| F.A.I. RTE. | SECTION | COUNTY | TOTAL SHEETS | SHEET NO. |
| 57/64 | (41-3)HBK | JEFFERSON | 18 | 28 |
| STA. | TO STA. | | CONTRACT NO. 98963 | |
| FED. ROAD DIST. NO. | ILLINOIS | FED. AID PROJECT | | |

Sheet 10 of 25



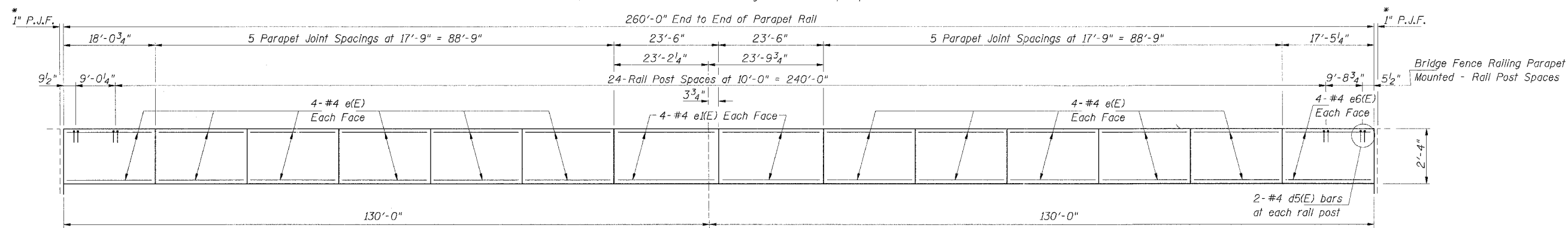
INSIDE ELEVATION - NORTH ROADWAY PARAPET
(All dimensions are measured along back face of parapet.)

* Cost included with Concrete Superstructure



INSIDE ELEVATION - SOUTH ROADWAY PARAPET
(All dimensions are measured along back face of parapet.)

Two Element Parapet Bicycle Railing - Post Spaces

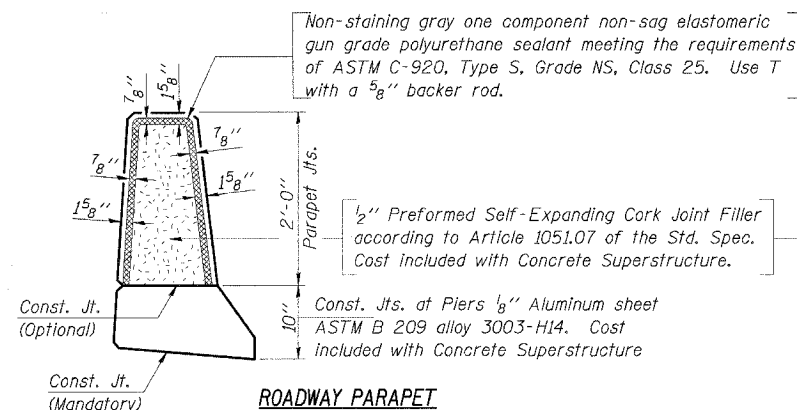


INSIDE ELEVATION - WALKWAY PARAPET
(All dimensions are measured along back face of parapet.)

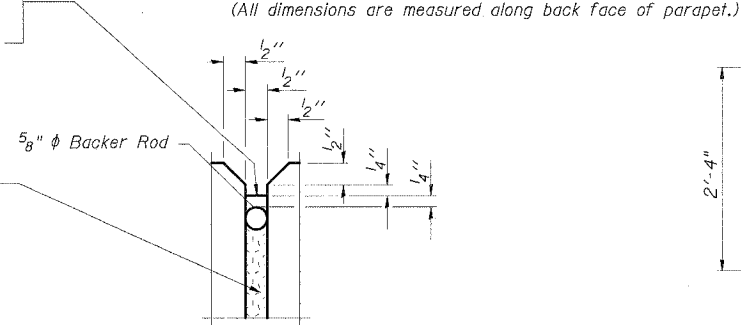
Bridge Fence Railing Parapet Mounted - Rail Post Spaces

BAR LAPS
#4 = 1'-8"
#8 = 4'-6"

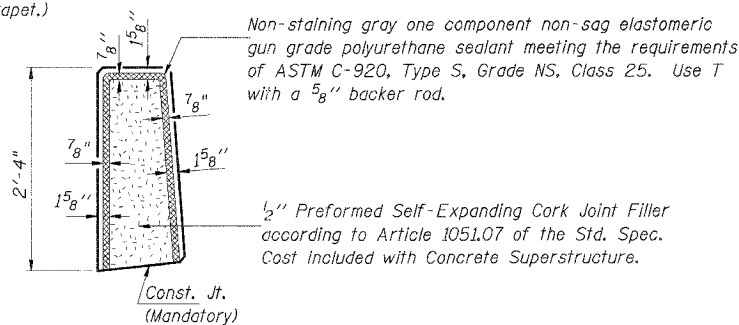
Note:
Space reinforcement to miss railing anchor bolts.



ROADWAY PARAPET



PARAPET JOINT DETAILS



WALKWAY PARAPET

PARAPET DETAILS
VETERANS MEMORIAL DR. over F.A.I. ROUTES 57/64
SECTION (41-3)HBK
JEFFERSON COUNTY
STATION 49+72.27
STRUCTURE NO. 041-0108

© Copyright Hanson Professional Services Inc. 2007



ISS. NO. 98S2019A
DATE 03-14-07

March 2007 Submittal
03/21/07 10:45 AM
I:\06\Jobs\98s2019a\Struct\Sheet\Final Plans 03-18-04\F-010.dwg

| | | |
|---------|----------|----------|
| LAYOUT | 02/22/04 | 03/12/07 |
| DRWN | 02/22/04 | 03/12/07 |
| CHKD | 02/22/04 | |
| REVISED | 02/22/04 | |