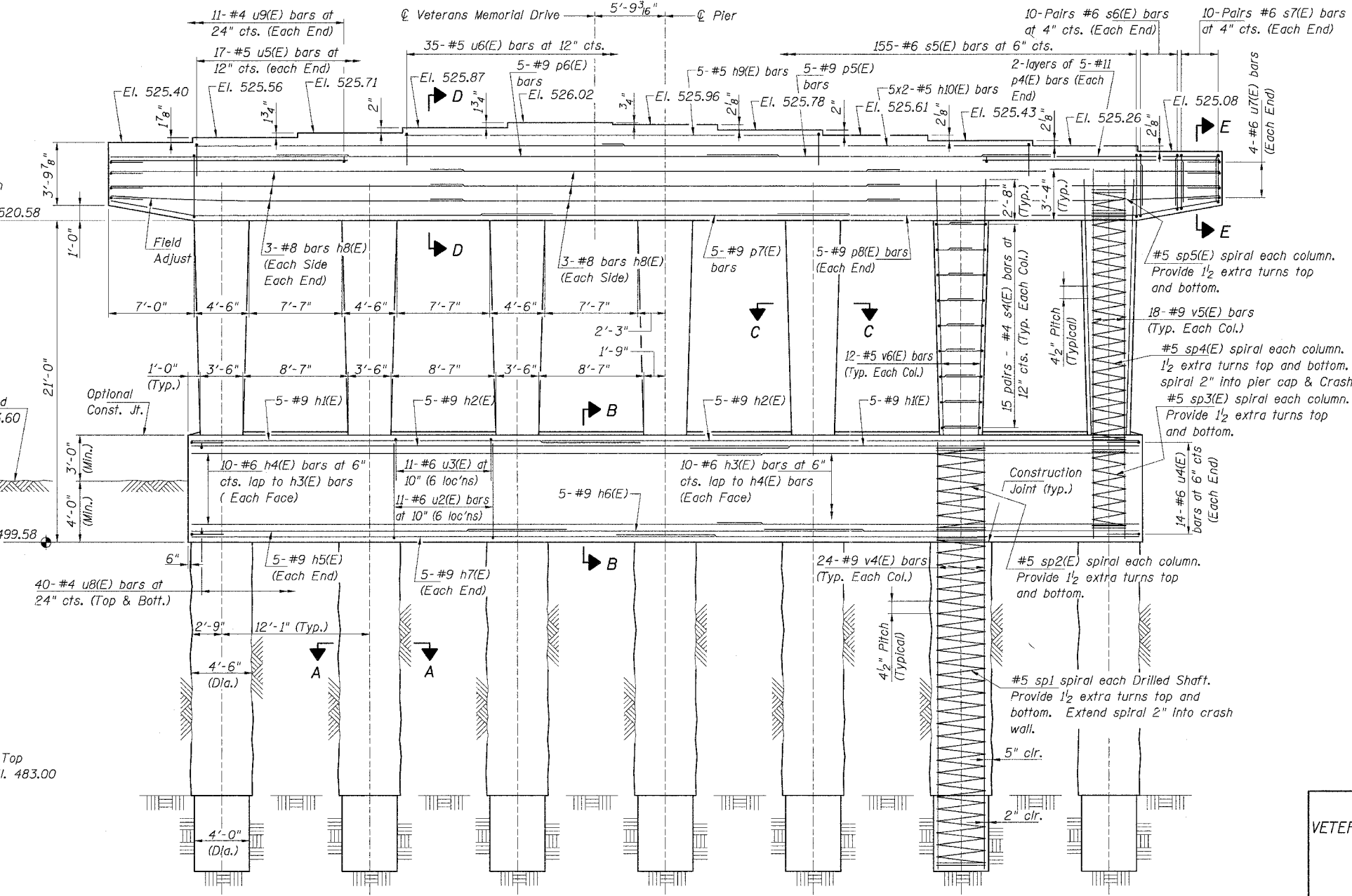
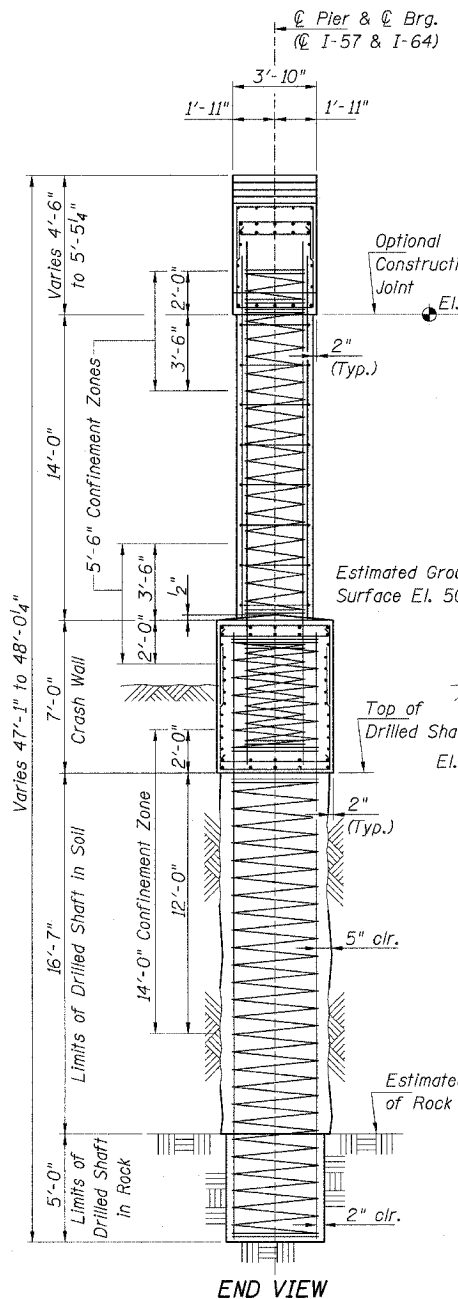
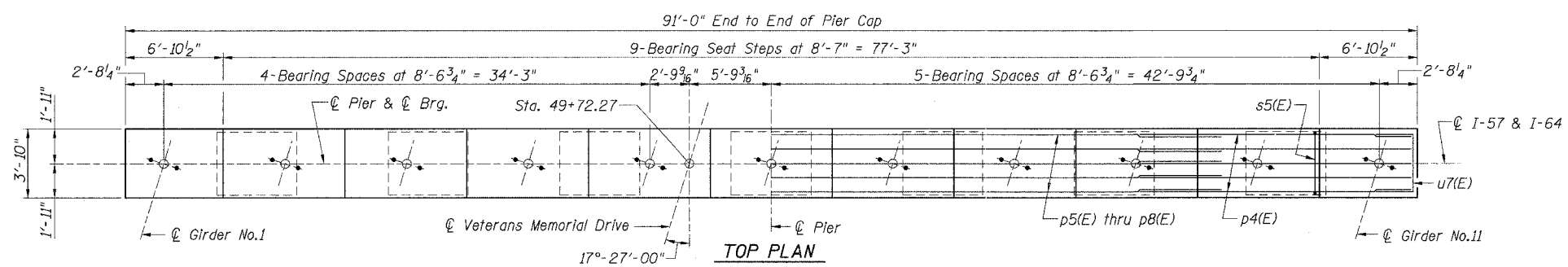
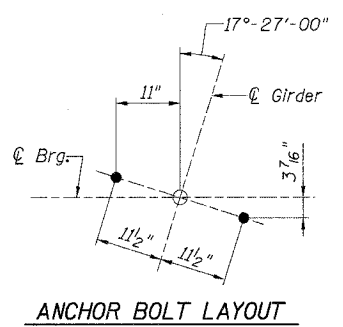


F.A.I. RTE.	SECTION	COUNTY	TOTAL SHEETS	SHEET NO.
57/64	(41-3)HBK	JEFFERSON	118	291
STA.	TO STA.			
FED. ROAD DIST. NO.	ILLINOIS	FED. AID PROJECT		
CONTRACT NO. 98963				

Sheet 21 of 25



MIN. BAR LAPS

#4	- 1'-8"
#5	- 2'-2"
#6	- 2'-7"
#8	- 4'-6"
#9	- 8'-1"

Note:
 Space cap reinforcement to miss anchor bolts.
 Cast steps monolithically with cap.
 Bars indicated thus, 5x2 #5 etc. Indicates 5 lines of bars with 2 lengths per line.
 Provide each spiral with 4-#4 spacers or equivalent.
 See Sheet 22 of 25 for Pier Bill of Material, Sections and Details.
 Shop weld together extra 1/2 spiral turns at top and bottom of spiral per AWS D1.4 or provide 1/2 extra turns top and bottom with 135° standard hook into core at ends of spiral.

The quantities and reinforcement detailing are based on the top of shaft and estimated rock elevations shown and may change based on the actual top of rock elevation encountered at each shaft and the final top of shaft elevation.

PIER DETAILS (Sheet 1 of 2)
 VETERANS MEMORIAL DR. over F.A.I. ROUTES 57/64
 SECTION (41-3)HBK
 JEFFERSON COUNTY
 STATION 49+72.27
 STRUCTURE NO. 041-0108

© Copyright Hanson Professional Services Inc. 2007

JOB NO. 98S2019A
 DATE 03-14-07

March 2007 Submittal

LAYOUT	MMN	03/12/07
DRAWN	DAS	03/12/07
REVIEWED	JFH	02/22/08