

NOTES - DISPLACED THRESHOLD ON RUNWAY 2-20

THIS PROJECT WILL REQUIRE THE TEMPORARY RELOCATION OF RUNWAY 2 END. THIS RELOCATION WILL BE IN ACCORDANCE WITH THE LAYOUTS AND DETAILS SHOWN ON THIS SHEET.

THE PROPOSED TEMPORARY MARKING (TYPE 1) WILL CONSIST OF PLACING REFLECTIVE TAPE ON THE EXISTING PAVEMENT AT THE LOCATIONS AND DETAILS SHOWN ON THIS SHEET AND ON RUNWAY END 2 PROPOSED TEMPORARY MARKING AND LIGHTING PLAN. PRIOR TO PLACING THE REFLECTIVE TAPE, THESE LOCATIONS SHALL BE PRESSURE WASHED.

THE REFLECTIVE TAPE WILL BE 4" WIDE, WHITE OR YELLOW IN COLOR. THE PROPOSED TAPE SHALL BE STANDARD HIGHWAY PRESSURE SENSITIVE TRAFFIC MARKING TAPE OR APPROVED EQUAL.

THE TEMPORARY RELOCATED THRESHOLD BAR AND RUNWAY NUMERAL WILL BE WHITE IN COLOR AND CONSTRUCTED IN ACCORDANCE WITH THE DETAILS ON THIS SHEET.

THE PROPOSED TEMPORARY CHEVRONS WILL BE YELLOW IN COLOR AND CONSTRUCTED IN ACCORDANCE WITH THE DETAIL ON THIS SHEET.

THE TEMPORARY CHEVRONS WILL BE PLACED ON RUNWAY 2-20 AS SHOWN ON THIS SHEET.

ALL TEMPORARY MARKING WILL BE IN PLACE AT THE END OF EACH CONSTRUCTION DAY AND REPAIRED TO THE SATISFACTION OF THE RESIDENT ENGINEER.

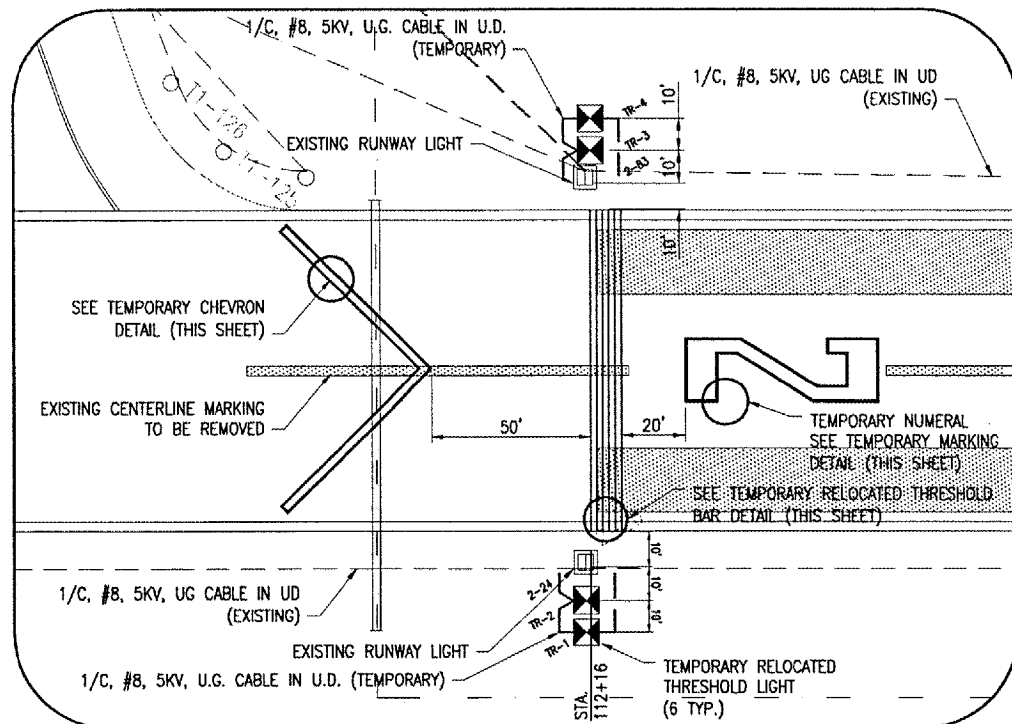
THE EXISTING RUNWAY LIGHTS 2-1 THRU 2-5, AND 2-16 THRU 2-20 WILL HAVE THEIR SPLIT CLEAR-AMBER LENSES REMOVED AND SWAPPED WITH THE LENSES FROM LIGHTS 2-26 THRU 2-30 AND 2-77 THRU 2-81. THE AMBER SIDE OF THE LENSES WILL BE POSITIONED TOWARD THE NORTH. THEN REMAINING RUNWAY 2-20 LIGHTS THAT ARE SOUTH OF THE TEMPORARY DISPLACED THRESHOLD. WILL BE COVERED IN A WAY THAT IS APPROVED BY THE RESIDENT ENGINEER AND WILL NOT EMIT LIGHT.

EXISTING THRESHOLD LIGHTS 2-7 THRU 2-11 WILL BE RELOCATED AS SHOWN ON THIS SHEET TO COMPLETE THE RELOCATED THRESHOLD. THE LENSE ON LIGHT 2-18 WILL BE REPLACED WITH SPLIT RED/GREEN LENSES FROM EXISTING THRESHOLD LIGHTS 2-12. ALL REMAINING THRESHOLD LIGHTS ON RUNWAY END 2 WILL BE COVERED SO THEY DO NOT EMIT ANY LIGHT. UPON REMOVAL OF THE TEMPORARY THRESHOLD THE CONTRACTOR WILL RETURN THE THRESHOLD LIGHTS BACK TO THEIR ORIGINAL LOCATION AND RETURN ALL GLOBES TO THEIR ORIGINAL OWNERS.

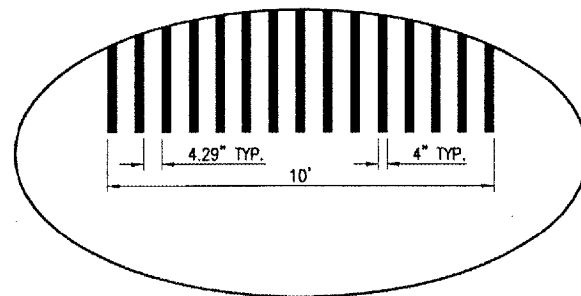
APPROXIMATELY 100' OF NO. 8, 5KV., 1/C TYPE C UG. CABLE WILL BE REQUIRED TO CONNECT THE TEMPORARY THRESHOLD LIGHTS INTO THE RUNWAY 2-20 LIGHTING CIRCUIT.

ALL PROPOSED NO. 8, 5KV., 1/C TYPE C CABLE NEEDED TO TEMPORARILY WIRE THE PROPOSED TEMPORARY THRESHOLD LIGHTS WILL BE TURNED OVER TO THE AIRPORT UPON REMOVAL OF THE RELOCATED THRESHOLD. THIS CABLE WILL BE CONSIDERED INCIDENTAL TO THE TEMPORARY MARKING AND LIGHTING AND NO ADDITIONAL COMPENSATION WILL BE ALLOWED.

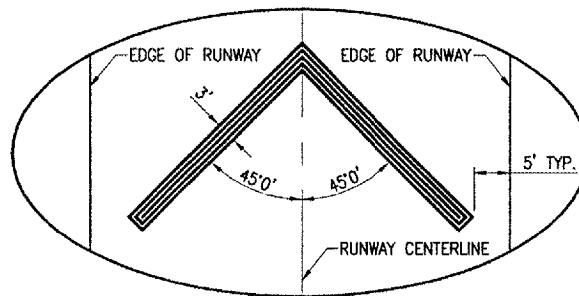
THE EXISTING REL'S AND V.A.S.I. FOR RUNWAY END 2 WILL BE TURNED OFF AS LONG AS THE TEMPORARY DISPLACEMENT IS IN PLACE.



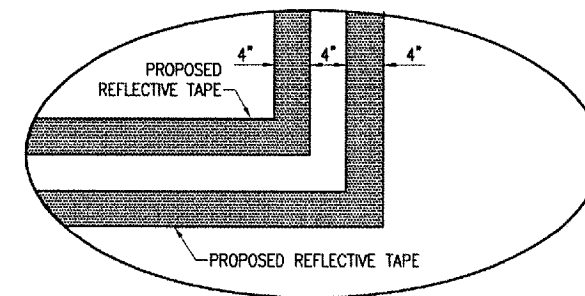
DETAIL "A"
FULL SIZE SCALE: 1" = 30'
HALF SIZE SCALE: 1" = 60'



TEMPORARY RELOCATED THRESHOLD BAR DETAIL
"NOT TO SCALE"



TEMPORARY CHEVRON DETAIL
"NOT TO SCALE"



TEMPORARY MARKING DETAIL
"NOT TO SCALE"

MARKING REMOVAL NOTES

THE AREAS THAT ARE DESIGNATED EXISTING (TO BE REMOVED) WILL BE REMOVED BY SANDBLASTING, SHOT BLASTING OR WATER BLASTING.

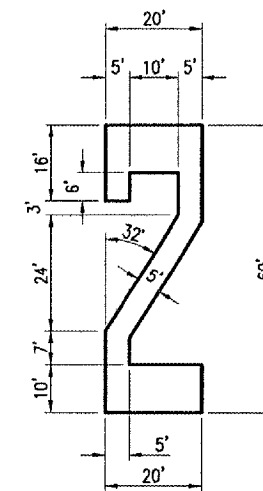
ALL AREAS TO BE REMOVED ARE CALCULATED AREAS. ANY ADDITIONAL AREAS, DUE TO OVER SPRAY, SHALL BE CONSIDERED INCIDENTAL TO THE CONTRACT AND NO ADDITIONAL COMPENSATION WILL BE ALLOWED.

THE PROPOSED MARKING REMOVAL SHALL BE PAID FOR UNDER ITEM AR620912 "TEMPORARY MARK AND LIGHT" - 1 L.S.

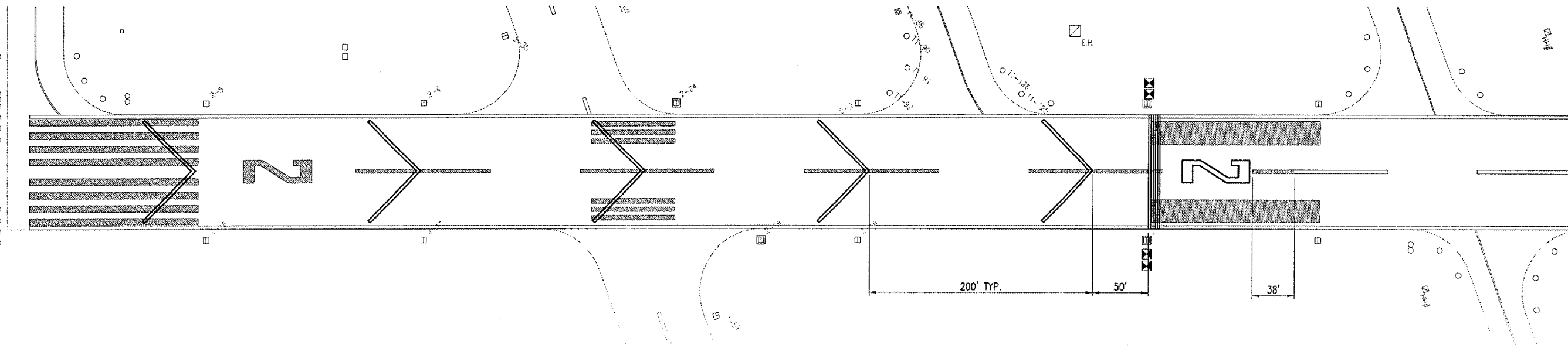
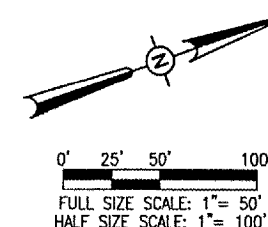
RUNWAY 2-20 MARKING REMOVAL QUANTITIES			
DESCRIPTION	UNIT AREA	NUMBER REQUIRED	TOTAL AREA (S.F.)
RUNWAY NUMERAL 2	652	1	652
RUNWAY TOUCHDOWN ZONE STRIPE - 4'x75'	300	6	1,800
RUNWAY CENTERLINE STRIPE - 3'x38'	114	1	114
RUNWAY CENTERLINE STRIPE - 3'x120'	360	4	1,440
RUNWAY THRESHOLD STRIPE - 5.75'x150'	862.5	8	6,900
RUNWAY AIMING POINT STRIPE - 20'x150'	3,000.0	2	6,000
TOTAL RUNWAY 2-20 MARKING REMOVAL			16,906

LEGEND

- EXISTING PAVEMENT
- EXISTING MARKING (TO BE REMOVED)
- PROPOSED TEMPORARY MARKING
- EXISTING ELECTRICAL CABLES
- PROPOSED ELECTRICAL CABLES
- EXISTING STAKE MOUNTED RUNWAY LIGHT
- PROPOSED TEMPORARY RELOCATED THRESHOLD LIGHT



NUMERAL 2 DETAIL
"NOT TO SCALE"



APR 06, 2007 8:54 AM BAK
 I:\PROJECTS\DEKALB\803-06ELEC\AIRPORT\SHEETS\AUTO-CADD\SHEETS\R-151MRK.DWG - Sheet 4

DATE	REVISION	BY

DIMAX
DEKALB TAYLOR MUNICIPAL AIRPORT
A.I.P. PROJ.: 3-17-0139-B37
I.L. PROJ.: DKB-3225

HANSON PROJECT NO. 803-06ELEC	DATE 03/20/07
ELABORATE R-151MRK.DWG	SCALE 1"=50'
LAYOUT CAH	03/19/07
DRAWN CCC	03/19/07
REVIEWED CAH	03/21/07

HANSON
Hanson Professional Services Inc.
1525 South Sixth Street
Springfield, Illinois 62703-2886
Offices Nationwide

**INSTALL MALSR
RUNWAY END 2
PROPOSED TEMPORARY
MARKING AND LIGHTING
PLAN**