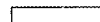
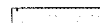
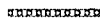
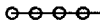
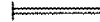
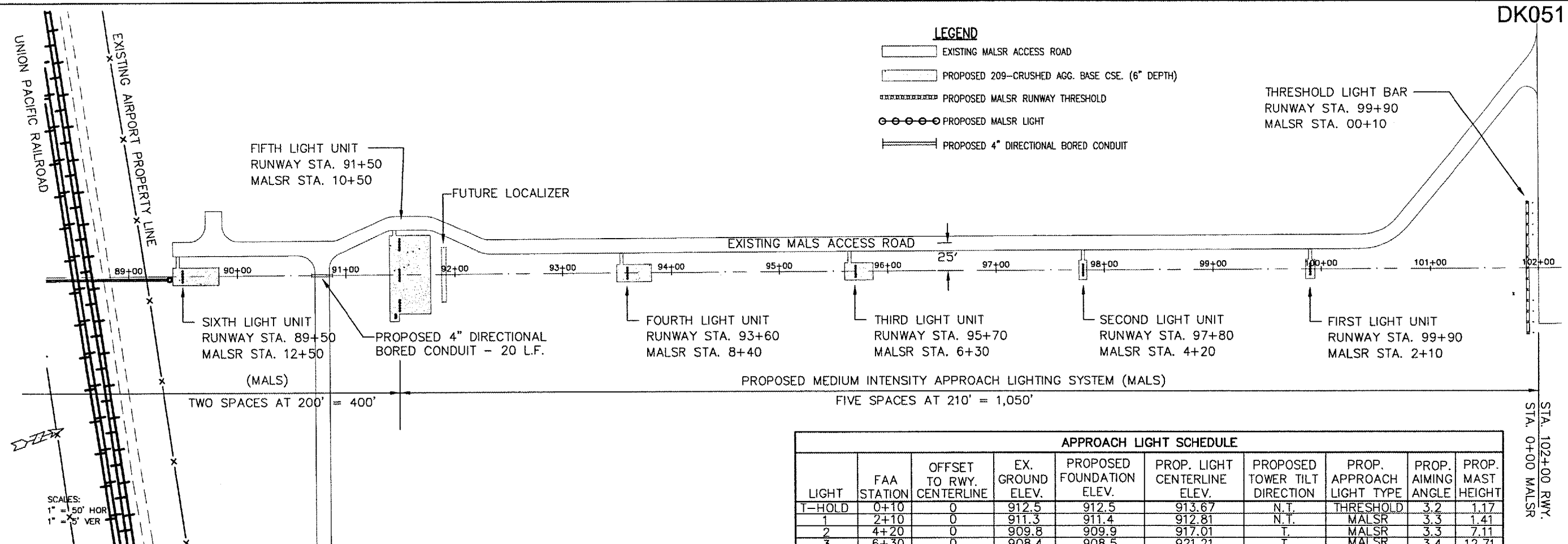


DK051

LEGEND

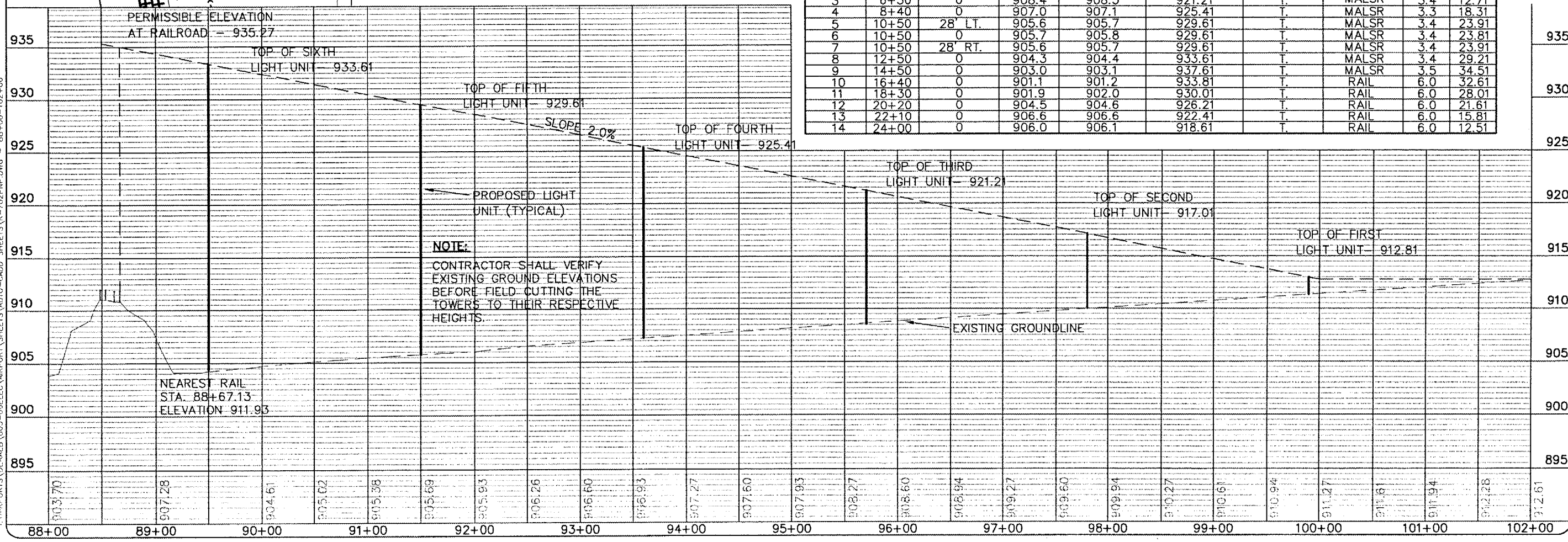
-  EXISTING MALS ACCESS ROAD
-  PROPOSED 209-CRUSHED AGG. BASE CSE. (6" DEPTH)
-  PROPOSED MALS RUNWAY THRESHOLD
-  PROPOSED MALS LIGHT
-  PROPOSED 4" DIRECTIONAL BORED CONDUIT

THRESHOLD LIGHT BAR
 RUNWAY STA. 99+90
 MALS STA. 00+10



SCALES:
 1" = 150' HOR
 1" = 30' VER

| APPROACH LIGHT SCHEDULE | | | | | | | | | |
|-------------------------|-------------|---------------------------|------------------|---------------------------|------------------------------|-------------------------------|---------------------------|--------------------|-------------------|
| LIGHT | FAA STATION | OFFSET TO RWY. CENTERLINE | EX. GROUND ELEV. | PROPOSED FOUNDATION ELEV. | PROP. LIGHT CENTERLINE ELEV. | PROPOSED TOWER TILT DIRECTION | PROP. APPROACH LIGHT TYPE | PROP. AIMING ANGLE | PROP. MAST HEIGHT |
| T-HOLD | 0+10 | 0 | 912.5 | 912.5 | 913.67 | N.T. | THRESHOLD | 3.2 | 1.17 |
| 1 | 2+10 | 0 | 911.3 | 911.4 | 912.81 | N.T. | MALS | 3.3 | 1.41 |
| 2 | 4+20 | 0 | 909.8 | 909.9 | 917.01 | T. | MALS | 3.3 | 7.11 |
| 3 | 6+30 | 0 | 908.4 | 908.5 | 921.21 | T. | MALS | 3.4 | 12.71 |
| 4 | 8+40 | 0 | 907.0 | 907.1 | 925.41 | T. | MALS | 3.3 | 18.31 |
| 5 | 10+50 | 28' LT. | 905.6 | 905.7 | 929.61 | T. | MALS | 3.4 | 23.91 |
| 6 | 10+50 | 0 | 905.7 | 905.8 | 929.61 | T. | MALS | 3.4 | 23.81 |
| 7 | 10+50 | 28' RT. | 905.6 | 905.7 | 929.61 | T. | MALS | 3.4 | 23.91 |
| 8 | 12+50 | 0 | 904.3 | 904.4 | 933.61 | T. | MALS | 3.4 | 29.21 |
| 9 | 14+50 | 0 | 903.0 | 903.1 | 937.61 | T. | MALS | 3.5 | 34.51 |
| 10 | 16+40 | 0 | 901.1 | 901.2 | 933.81 | T. | RAIL | 6.0 | 32.61 |
| 11 | 18+30 | 0 | 901.9 | 902.0 | 930.01 | T. | RAIL | 6.0 | 28.01 |
| 12 | 20+20 | 0 | 904.5 | 904.6 | 926.21 | T. | RAIL | 6.0 | 21.61 |
| 13 | 22+10 | 0 | 906.6 | 906.6 | 922.41 | T. | RAIL | 6.0 | 15.81 |
| 14 | 24+00 | 0 | 906.0 | 906.1 | 918.61 | T. | RAIL | 6.0 | 12.51 |



| DATE | REVISION | BY |
|------|----------|----|
| | | |
| | | |

DIMAX
 DEKALB TAYLOR MUNICIPAL AIRPORT
 A.I.P. PROJ.: 3-17-0139-B37
 I.L. PROJ.: DKB-3225

| LAYOUT | CAH | 03/13/07 |
|----------|-----|----------|
| DRAWN | JEO | 03/13/07 |
| REVIEWED | CAH | 03/21/07 |

HANSON
 Hanson Professional Services Inc.
 1525 South Sixth Street
 Springfield, Illinois 62703-2886
 Offices Nationwide

INSTALL MALS
 RUNWAY END 2
 RWY. & MALS PLAN & PROFILE
 STA. 90+00 TO STA. 102+00
 DKB-D-MALS02-C01

APR 06, 2007 9:05 AM BAK
 C:\A-REPORTS\DEKALB\803-06ELEC\AIRPORT_SHEETS\AUTO-CAOD_SHEETS\R-702PNP.DWG - 88+00-102+00