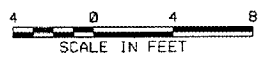


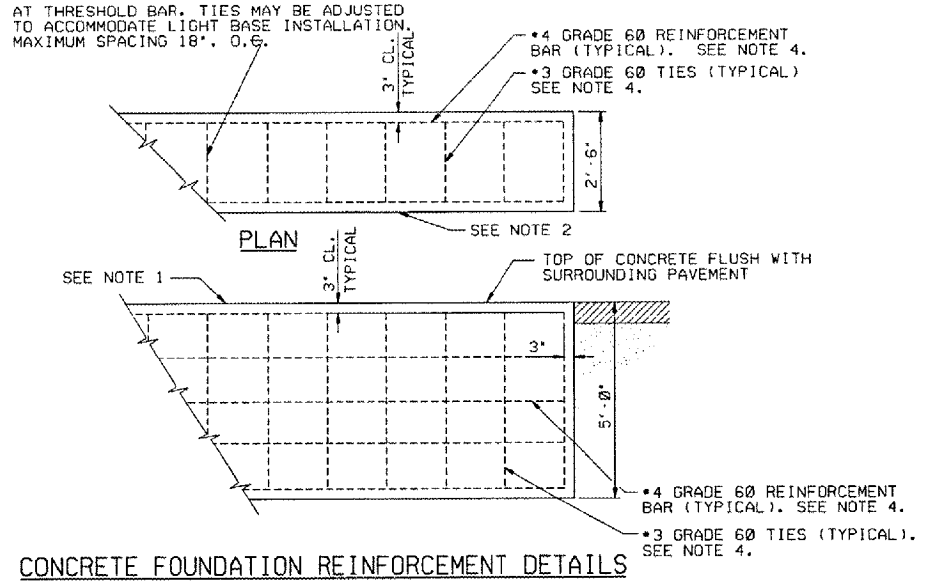
**ELEVATION VIEW
STEADY-BURNING LIGHT BAR
AT RUNWAY THRESHOLD (STATION 0+10)**

1 DETAIL



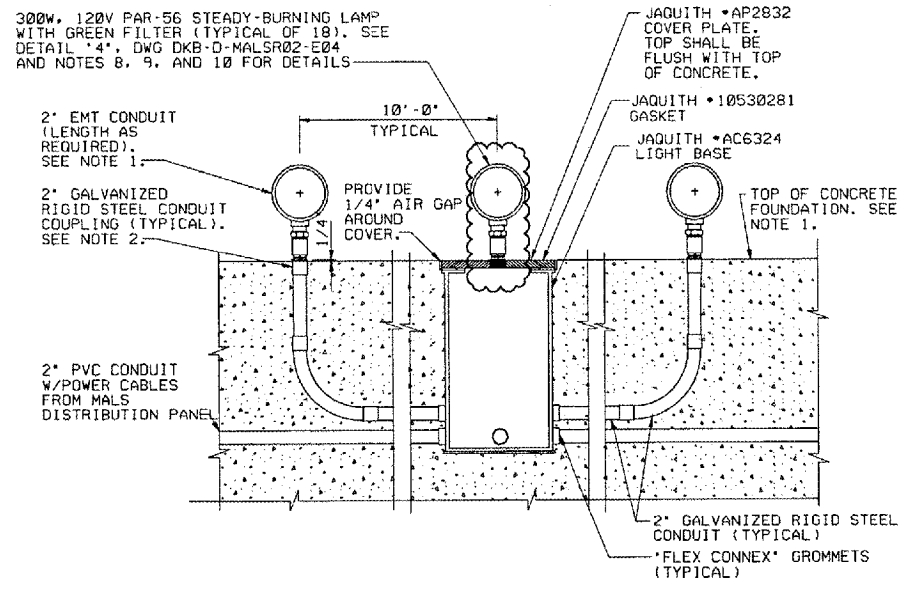
NOTE:
THE CONTRACTOR WILL FURNISH AND INSTALL A LAYER OF CA-16 ALONG THE SOUTH SIDE OF THE CONCRETE FOUNDATION. THE LAYER OF CA-16 WILL BE 6" WIDE, 12" DEEP AND WILL BE PLACED 18" BELOW THE TOP OF THE CONCRETE FOUNDATION. THIS LAYER OF CA-16 WILL BE CONTINUED ON TO THE EXISTING UNDERDRAIN BACKFILL TO ALLOW MOISTURE TO FLOW TO THE EXISTING UNDERDRAIN.

- NOTES:**
- SEE DWG DKB-D-MALSR02-C01 FOR LAMP CENTERLINE AND FOUNDATION TOP ELEVATIONS.
 - RIGID STEEL COUPLINGS SHALL BE INSTALLED PLUMB. THE TOP OF THE COUPLING SHALL PROTRUDE 1/4" ABOVE THE TOP OF THE CONCRETE FOUNDATION. INSTALL A SHORT NIPPLE INSIDE THE RIGID STEEL COUPLING TO PROVIDE A STOP FOR THE FRANGIBLE COUPLING SO THAT THE TOP THREAD OF THE FRANGIBLE COUPLING IS EXPOSED ABOVE THE RIGID STEEL COUPLING. TIGHTEN FRANGIBLE COUPLING AGAINST SHORT NIPPLE TO PREVENT ROTATION OF THE LAMPHOLDER. SEE SECTION 13A.20 OF THE SPECIFICATION FAA-GL-918C.
 - SEE PROJECT SPECIAL PROVISIONS FOR EXCAVATION AND BACKFILL REQUIREMENTS. EXCAVATION SHALL BE SHORED OR SHAPED PER OSHA REQUIREMENTS.
 - SEE PROJECT SPECIAL PROVISIONS FOR CONCRETE FORM WORK, REINFORCEMENT, MATERIAL PLACEMENT, AND CURING SPECIFICATIONS.
 - ALL CONNECTIONS TO GROUNDING RODS SHALL BE MADE USING EXOTHERMIC WELDS PER SPECIFICATIONS.
 - GREEN GLASS FILTER SHALL BE INSTALLED PER NOTE 8 AND DETAIL *4*, DWG DKB-D-MALSR02-E04.
 - LAMPHOLDER RETAINING RINGS SHALL BE INSTALLED ON THE PAR-56 LAMPHOLDERS. SEE NOTE 9 AND DETAIL *4*, DWG DKB-D-MALSR02-E04.
 - SEE DETAIL *1*, DWG DKB-D-MALSR02-E03 FOR THRESHOLD BAR WIRING DETAILS.
 - SEE DETAIL *4*, DWG DKB-D-MALSR02-E04 FOR THRESHOLD BAR PAR-56 LAMPHOLDER ASSEMBLY DETAILS.
 - 1/4" WIDE X 1/2" DEEP CONTRACTION JOINTS SHALL BE SAWCUT INTO THE SURFACE OF THE THRESHOLD BAR FOUNDATION AT LOCATIONS SHOWN.



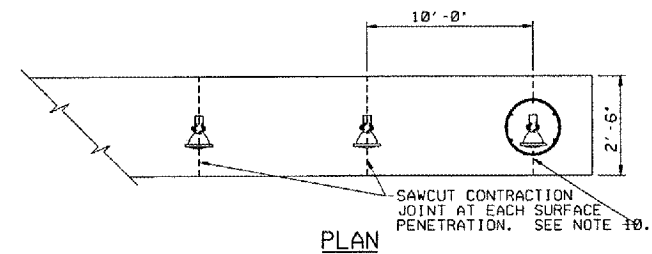
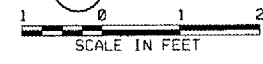
CONCRETE FOUNDATION REINFORCEMENT DETAILS

2 DETAIL



TYPICAL LIGHT BASE AND CONDUIT INSTALLATION DETAILS

3 DETAIL



TYPICAL CONTRACTION JOINT DETAILS

4 DETAIL

DEPARTMENT OF TRANSPORTATION FEDERAL AVIATION ADMINISTRATION GREAT LAKES REGION				CHICAGO, ILLINOIS			
MALSR FOUNDATION DETAILS FOR STEADY - BURNING LIGHT BAR AT RUNWAY THRESHOLD							
DEKALB				DEKALB TAYLOR MUNICIPAL AIRPORT			
REVIEWED BY	SUBMITTED BY				APPROVED BY		
	PROJ. ENGR.	ISSUED BY	PLATFORM MGR.				
DATE	TAD	CHICAGO HAS	DATE	JCN			
DRAWN	TAD	IMPLEMENTATION	DRAWING NO.				
DRAWN	EGS	CENTER	DKB-D-MALSR02-C04				

DATE	DESCRIPTION	JCN	REDLINE DATE	APVD

PLOT DATE: 04/19/2007, 10:00 AM
 FILE NAME: I:\AIRPORTS\DEKALB\B03-08\ELC\AIRPORT\SHEETS\MICRO-STATION SHEETS\MALSR\STBY BRNG LIGHT BAR AT THRESHOLD FOR 100' RWY.DGN
 PLOT SCALE: 1/8" = 1' / IN.
 USER NAME: BAK