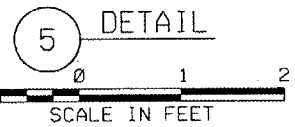
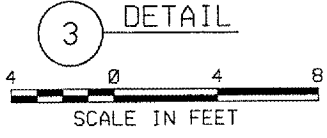
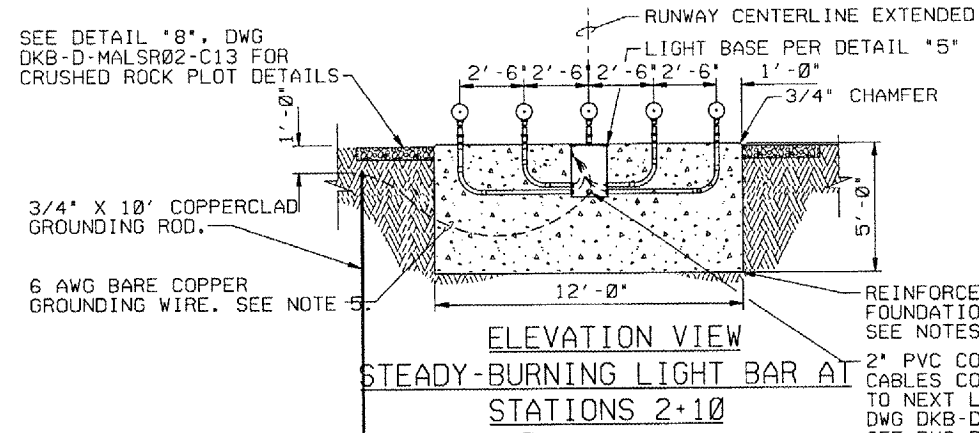
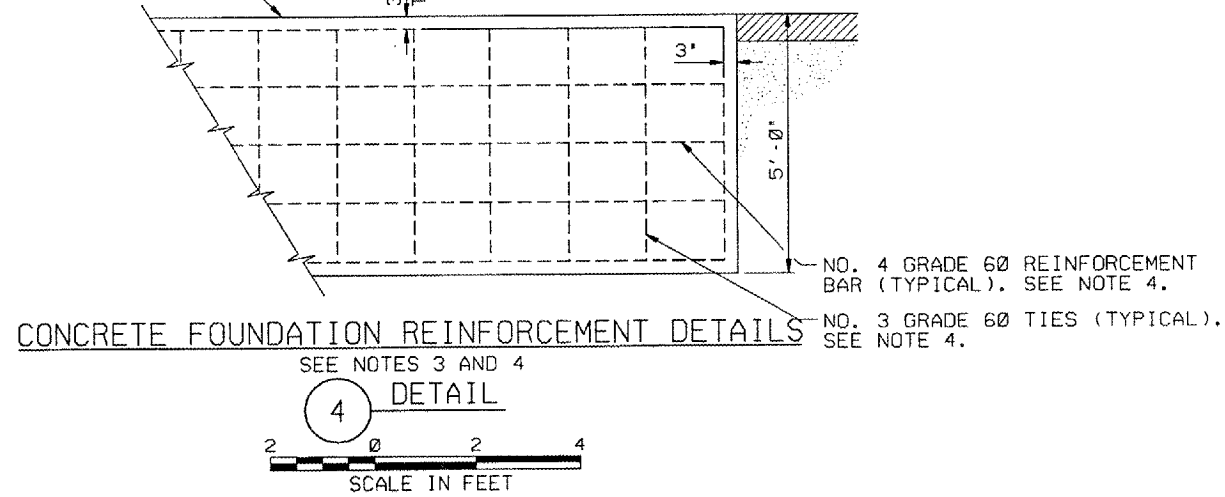
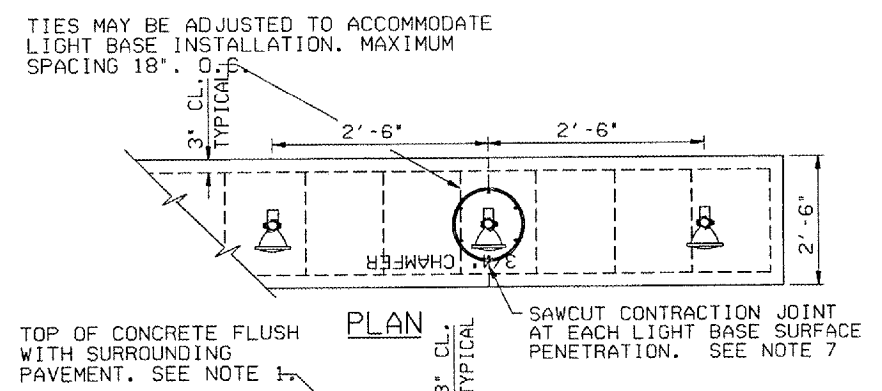


TYPICAL LIGHT BASE AND CONDUIT INSTALLATION DETAILS



NOTES:

1. SEE DWG DKB-D-MALSR02-C01 FOR LAMP CENTERLINE AND FOUNDATION TOP ELEVATIONS.
2. RIGID STEEL COUPLINGS SHALL BE INSTALLED PLUMB. THE TOP OF THE COUPLINGS SHALL PROTRUDE 1/4" ABOVE THE TOP OF THE CONCRETE FOUNDATION. THE FRANGIBLE COUPLING SHALL BE LOCKED AGAINST TURNING USING A LOCKING RING. TIGHTEN LOCKING RING AGAINST TOP OF COUPLING TO PREVENT ROTATION OF THE LAMPHOLDER. SEE SECTION 13A.2D OF THE SPECIFICATION FAA-GL-918C.
3. SEE PROJECT SPECIAL PROVISIONS FOR EXCAVATION AND BACKFILL REQUIREMENTS. EXCAVATION SHALL BE SHORED OR SHAPED PER OSHA REQUIREMENTS.
4. SEE PROJECT SPECIAL PROVISIONS FOR CONCRETE FORM WORK. REINFORCEMENT, MATERIAL, PLACEMENT, AND CURING SPECIFICATIONS.
5. ALL CONNECTIONS TO GROUNDING RODS SHALL BE MADE USING EXOTHERMIC WELDS PER SPECIFICATIONS.
6. SEE DETAIL \*2\*, DWG DKB-D-MALSR02-E03 FOR PAR-38 LAMPHOLDER WIRING DETAILS FOR 5-LIGHT BAR MOUNTED ON EMT SUPPORTS.
7. 1/4" WIDE X 1/2" DEEP CONTRACTION JOINTS SHALL BE SAWCUT INTO THE SURFACE OF THE LIGHT FOUNDATION AT LOCATIONS SHOWN.
8. THE SPLICE CAN SHALL BE A SPECIFICATION FAA-E-1315A, L867D LIGHT BASE, CLASS 1, 16 1/4" I. D., 24" DEEP, WITH 3/8" COVER PLATE, JAQUITH TYPE AP2832 AND GASKET, JAQUITH TYPE 10530281. AT THE THRESHOLD BAR THE LIGHT BASE WILL BE JAQUITH CAT. NO. AC632420600301. AT THE 5-LIGHT EMT BARS, THE LIGHT BASE WILL BE JAQUITH CAT. NO. AC632420X00301 AND SHALL HAVE 2" DIA FLEXIBLE GROMMET CONNECTIONS (FLEX CONNEX) AT THE FOLLOWING LOCATIONS: TWO AT 0° AND 180° (STACKED VERTICALLY) AND ONE AT 90° AND 270°. THE PLYWOOD SHIPPING COVER SHALL BE USED AS CONCRETE FORM TO PROVIDE 5/16" WIDE AIR GAP IN CONCRETE AROUND BASE PLATE. TOP OF COVER SHALL BE FLUSH WITH TOP OF CONCRETE FOUNDATION CONFIRM ALL PART NUMBERS WITH MANUFACTURER.



DEPARTMENT OF TRANSPORTATION FEDERAL AVIATION ADMINISTRATION GREAT LAKES REGION CHICAGO, ILLINOIS			
MALSR			
FOUNDATION DETAILS FOR STEADY-BURNING LIGHT BAR AT STATION 2+10 RUNWAY 02			
DEKALB		DEKALB TAYLOR MUNICIPAL AIRPORT IL	
REVIEWED BY	SUBMITTED BY	APPROVED BY	
PROJ. ENGR.	TAD	ISSUED BY	PLATFORM MGR.
DATE	DATE	DATE	DATE
DRAWN	TAD	CHICAGO NAS	
		IMPLEMENTATION	
		CENTER	
		DRAWING NO.	
		DKB-D-MALSR02-C05	

PLOT DATE: 8/23/2007 10:29 AM  
 FILE NAME: I:\A\REPORTS\DEKALB\03-BELLEVILLE\REPORTS\SHEETS\MICRO-STATION SHEETS\MALSR D.E.B.DGN  
 PLOT SCALE: 7.5 5/16 "/>